

Alabastine

Instead of kalsomine or wallpaper

No Packages
Without
Green
and
Circles
Printed in Red



To Get
Alabastine
Retail You
Must Ask for
Alabastine
by Name

Beautiful—Sanitary—Durable—Economical
for Homes, Schools, Churches and all Interior Wall Surfaces

Alabastine can be applied to plastered walls, wallboard, over painted walls that have become soiled, or even over soiled wallpaper solid on the wall and not printed in small colors.

Alabastine is a dry powder, ready to mix with pure, cold water, full directions on each package. Alabastine is packed in white and beautiful tins. These, by combining and intermixing, enable you to carry out individual color plans in matching rugs and draperies. Alabastine is used in the finest residences and public buildings, but priced within the reach of all.

You will readily appreciate the economy of Alabastine over paint or wallpaper, and its results will be most gratifying.

New walls demand Alabastine, old walls appreciate Alabastine.

If your local dealer cannot or will not supply you, take no substitute. Write for Alabastine designs and we will give you name of nearby dealer.

Alabastine Company
1945 Grandville Ave., Grand Rapids, Mich.

RAW FURS

Send us bring your Raw Furs to the Oldest and Largest Fur Manufacturer in Michigan
For more than 30 years we have been buying Raw Furs and manufacturing them into

COATS, CAPES, SCARFS, MUFFS, CAPS, COLLARS, Etc.

We remit at once but hold Furs for your acceptance of our offer. Ask the Dry Goods Merchants or the Postmaster in your city about us.

NEWTON ANNIS

Woodward at Clifford (Since 1887) DETROIT, MICH.

TOO QUICK IN CONDEMNATION

Billy Grimes Might Have Been a Little Less Hasty in "Bawling Out" the Doctor.

"The opponents of strong drink," said a politician at a dinner in New York, "are too ready with their accusations—accusations of drunkenness and what not—against all who don't share their views."

"Sometimes I think they are as good as Billy Grimes. Billy's doctor had bought a fine new pair of acetylene lamps for his automobile, and one evening the water reservoirs of both lamps got so empty, and so, of course, the lights went out. The doctor, halting in front of Billy's shack, shouted:

"'Hi, Billy, can you let me have some water for my lamps?'"

"'Billy came forth. 'Water?' he said. 'I guess ye mean oil, don't ye, doc?'"

"'No, I don't,' said the doctor; 'I mean water.'"

"'Billy looked at the doctor, then he shook his head sadly. 'Better go, right off home, doc,' he said. 'Go home and sleep it off. Ain't ye ashamed of yerself—let your eyes—read all the lies of the community dependa' on ye.'—Washington Star.

Naturally Made Him Nervous. In a certain Los Angeles county court recently a case for divorce came up, only to be dismissed by agreement of the opposing counsels. It seems that the man instituted the suit, had a row with his first lawyer, and then went to Lou Gurnsey. "What are your grounds for bringing this action against your wife?" asked Lou. "Well," said the man, "I came home early the other afternoon and I attempted to use the door I heard my wife talking to a suitor named man. I was just in time to hear her say: 'I won't pay another cent. I've been paying this party on my husband for eight years and I've had no luck yet.'"

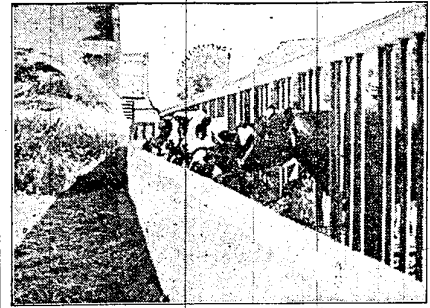
The Locality. "Exports say it takes fully fifteen minutes to shear a sheep by hand." "Not if it is done in Wall street."

Lots of people would rather say nothing than speak a kind word.

A Morning Dish Of Grape-Nuts

certainly does hearten one up for the day. Why shouldn't it? Grape-Nuts is ready-cooked, ready-sweetened, and contains just those good elements nature requires for the strength to do things. Make Grape-Nuts your home cereal "There's a Reason"

BEET-TOP SILAGE WELL SUITED FOR USE BY DAIRYMAN OR FEEDER OF BEEF CATTLE



Feeding Rack, Well Adapted for Handling Rough Feeds.

(Prepared by the United States Department of Agriculture.)

Beet-top silage is well suited for use by the dairyman or the feeder of beef cattle and sheep. When it is fed for the maintenance of beef or mutton, the hay requirements may be reduced 10 to 20 per cent. The warm, succulent silage seems to stimulate the appetites of the animals, causing them to consume the usual larger quantities of feed. Most beet growers estimate that beet-top silage has a value about one-third, to one-half that of alfalfa hay.

These points are discussed in detail in the Farmers' bulletin 1025, "Beet-Top Silage and Other By-Products of the Sugar Beet," which was recently issued by the United States Department of Agriculture. This bulletin advocates the use of beet-top silage in mixing the shortage of hay and other forage. It illustrates good methods of constructing pits and silos and gathering and silaging the tops, and makes other important suggestions in regard to feeding the silage, molasses, and pulp. Based largely upon reports of beet growers and stock feeders.

Balanced Ration Recommended. "Beet pulp and molasses, by-products which have an established value with stock feeders, should be fed with the silage to make a balanced ration. In order to make a balanced ration," the bulletin says. "At the present price of beet molasses many feeders are finding a mixture of molasses with hay or silage to be profitable. This furnishes a variety and stimulates appetite when fed in regulated quantities. "In feeding beet-top silage, about 30 pounds per 1,000 pounds weight for cattle and 30 pounds per head for sheep each day seem to be most satisfactory. "Animals not accustomed to beet-top silage should be given a small quantity at first and the feeding gradually increased until the normal ration is reached."

Other important points given in the bulletin follow: "A good crop of beets will yield from 2 1/2 to 3 tons of processed silage. The average cost of gathering the tops and filling, packing and finishing the silo is about \$1 a ton. "It is extremely important that the tops be gathered and put into small silos promptly after the beets are topped. The dirt may be easily shaken from the tops while the leaves are still fresh. It is imperative that dirt and sand be eliminated. "The fundamental factors that are involved in making good corn silage also apply in making beet-top silage. Pack the mess thoroughly to exclude the free air and then seal tight. Good silage requires thorough packing. "It is not necessary to run the tops through a silage cutter. Some feeders prefer to do so, however, to avoid the possibility of lumps choking on the ground. "The frame structure that is commonly used for putting up corn silage may be used for beet-top silage. Because beet tops pack in a very dense mass, the structure will sometimes crack and spread this will sometimes cause a well-built silo to be reasonably safe. "Making beet-top silage does not necessarily involve a cash outlay for materials. The natural earth silo and stacking above the earth are both successful. Concrete side retaining walls are advisable under certain conditions, however. "The natural earth silo will yield just as good results for beet-top silage as the perpendicular structure, but greater care in packing is necessary. "An excellent quality of silage is made by stacking the tops entirely above the earth and then packing them thoroughly. The spoilage loss is great, but when the structure or the pit silo is used. "It is not necessary to alternate layers of tops with layers of straw. It is always advisable to put a layer of straw next to the earth bottom and sides to eliminate dirt from the silage. "Silage is not a balanced ration. It should always be supplemented by other feeds. "Silage is a carbohydrate feed and balances with alfalfa hay, which is rich in protein. "The fermenting process in the silo largely corrects the cathartic salts in beet tops. "The most profitable use is made of beet tops when they are silaged and fed with alfalfa hay or other forage and possibly supplemented with grain or concentrate feeds. "Allows Fall Plowing. "Gathering beet tops from the field and silaging them without undue delay allows fall plowing to be done before

OUT O' LUCK

Never mind! Just take Cascarets if Bilious, Constipated

Everyone must occasionally give to the bowels some regular help or else suffer from constipation, bilious attacks, stomach disorders and sick headache. But no matter how the bowels into activity with harsh cathartics. What the liver and bowels need is a gentle and natural tonic, one that can constantly be used without harm. The greatest liver and bowel tonic is "Cascarets." They put the liver to work and cleanse the colon and bowels of all waste, toxins and poisons without gripping—they never sticken of inconstancy you like Calomel, Salts, Oil or Purgatives. Twenty-five million boxes of Cascarets are sold each year. They work while you sleep. Cascarets cost so little too.—Adv.

Has a Good Effect. "While one of Shakespeare's plays do you regard as his masterpiece?" "Macbeth," replied the man who is slightly suspected. "Perhaps you are right, but scholars differ." "Oh, I don't set myself up as a scholar or even a good judge of plays. I merely know that after seeing a performance of 'Macbeth' my wife says she feels little and afraid and in need of a projector."—Birmingham Age-Herald.

GREEN'S AUGUST FLOWER.

Constipation invites other troubles which can be speedily unless quickly checked, but overcome by Green's August Flower which is a gentle laxative. It cleanses the bowels, both in stomach and intestines, cleans and sweetens the stomach and alimentary canal, stimulates the liver to secrete the bile abundantly from the blood. It is a sovereign remedy used in many thousands of households all over the civilized world for more than half a century by those who have suffered with indigestion, nervous dyspepsia, sluggish liver, coming up of food, flatulency, constipation and other intestinal troubles. Sold by druggists and dealers everywhere. Try a bottle, take no substitute.—Adv.

Avoid the Cynic.

If you want to retain a wholesome view of life, if you want to hold your faith in mankind; if you want to have enduring peace of mind, keep away from cynics. Should any such be among your acquaintances, give them a wide berth. They may be bright, clever, distinguishing people. Cynics often are. But they are poisonous people.—Chicago News.

EASIER FOR HER TO DYE THAN TO BUY

"Diamond Dyes" Turn Faded, Shabby Apparel Into New.

Don't worry about perfect results. Use "Diamond Dyes," guaranteed to give a new, rich, fadeless color to any fabric; whether it be wool, silk, linen, cotton or mixed goods.—frescoes, blouses, stockings, skirts, children's coats, feathers—everything! "Direction Book in package tells how to diamond dye over any color. To match any material, have dealer show you "Diamond Dye" Color Card.—Adv.

No, Dorothy, it does not take four quarter dimes to make a ship.

GRAIN GRADING GREAT HELP

Farmers and Shippers Feel That They Are Better Off Working Under Federal System.

Grain farmers and shippers of the Pacific Northwest feel that they are better off doing business under the federal grading system than under any previous system of grain inspection, according to opinions expressed at a meeting held in connection with the farmers' short course of the Oregon Agricultural college, says the United States department of agriculture. The men who attended the meeting said they were in favor of keeping the grades at a high standard, thereby giving a premium to the farmers raising a high quality of wheat.

NOW USE ARSENATE OF LIME

Satisfactory in All Situations as Substitute for Paris Green and Arsenate of Lead.

Additional experience confirms the conclusion reported last year by the bureau of entomology of the United States department of agriculture, that arsenate of lime may be used in all situations as a substitute for paris green, and that for pomaceous fruits and apples, use of arsenate may prove a satisfactory substitute for paris green. A less expensive substitute for nicotine sulphate also is being sought.

LIVE STOCK NOTES

Get rid of the scrub steer. Farm land is too high in price to raise scrub live stock on.

The brood mare that is worked right up to the time of foaling should be fed well.

Few kinds of manure have more of fertilizing value than that from sheep. This is an item of no slight importance.

Sure Relief

BELLANS FOR INDIGESTION
6 BELLANS Hot water Sure Relief
FOR INDIGESTION



Vaseline

PETROLEUM JELLY
For sores, broken blisters, burns, cuts and all skin irritations. Also impenetrable toilet uses. REFUSE SUBSTITUTES

CHEESEBROUGH MFG. CO.

Stade Street New York

Mother's Coughs and Colds Go Quickly
She cannot afford to be sick and neglect her household duties. At the first symptoms she prepares the way for quick recovery by the immediate use of Gray's Syrup as a household preparation of Gray's Syrup stands. Member please keep the Syrup.

GRAY'S SYRUP

RED SPRUCE GUM
WATSON & CO. NEW YORK

UNCLE SAM

a SCRAP chew in PLUG form
MOIST & FRESH
Lipton's Pure Tobacco Co.

Cuticura Soap

Clears the Skin and Keeps it Clear
Soap 25c, Ointment 25 and 50c, Tablets 25c.

FRECKLES

Positively removed by Dr. J. C. Williams' Pink Pills for Pale People. Plan: Weller's Preferred Quality Stock Seed for profits today. Write: National Nurseries, Inc., 1000 Michigan. Growers Quality Nursery Stock. W. N. J. U., DETROIT, NO. 11-1920.

CASTORIA

For Infants and Children

Mothers Know That Genuine Castoria Always Bears the Signature of

of

In Use For Over Thirty Years

CASTORIA

Exact Copy of Wrapper. THE CASTORIA COMPANY, NEW YORK, CTRY.