

# High hopes

## Community Center seeks funds

By Joanne Maliszewski  
staff writer

With just days to go until the start of the 1985 community fund drive, Farmington Community Center officials are keeping their fingers crossed that contributions will top \$70,000.

Fund-raising efforts are a bit higher this year than last to keep pace with increased operating costs, said Betty Paine, the center's executive director. Contributions from the 1984 community fund drive totaled \$55,000, she said.

The campaign's Feb. 1 kick-off coincides this year with the center's week-long 15th anniversary celebration (Feb. 3-9). The fund drive, headed by Floyd and Leola Calrus, will continue through April.

Volunteers are preparing "a blanket mailing to residents in Farmington Hills, Farmington and a specific list of prior contributors and volunteers," Paine said.

THE CENTER'S request for contributions will also extend to residents outside of the Farmington area who have participated in programs or contributed previously, Paine said.

"We have many volunteers and

**"We're looking at this as a special year so we're trying to double our contributors"**

— Betty Paine  
Community Center executive director

board members coming in an adding a special personal note" on the letters mailed to area households. The personal notes, Paine said, have helped triple revenue in the last five years.

The center's two fund drives — community and corporate — are necessary because the revenue generated from classes and special event fees and rentals will not fully support the 1985 \$175,000 budget, Paine said. The corporate drive last fall generated \$20,000, she said.

"Every other community center does belong to the city and gets city funds," Paine said.

BUT THE Farmington Community Center does not receive any local,

state or federal money, she said.

Generally, the money contributed from the corporate drive is earmarked for the historic house on Farmington Road, which houses the recreational institution, Paine said.

At the end of February the 70 community fund drive volunteers will conduct a telephone follow-up to the letters requesting a contribution.

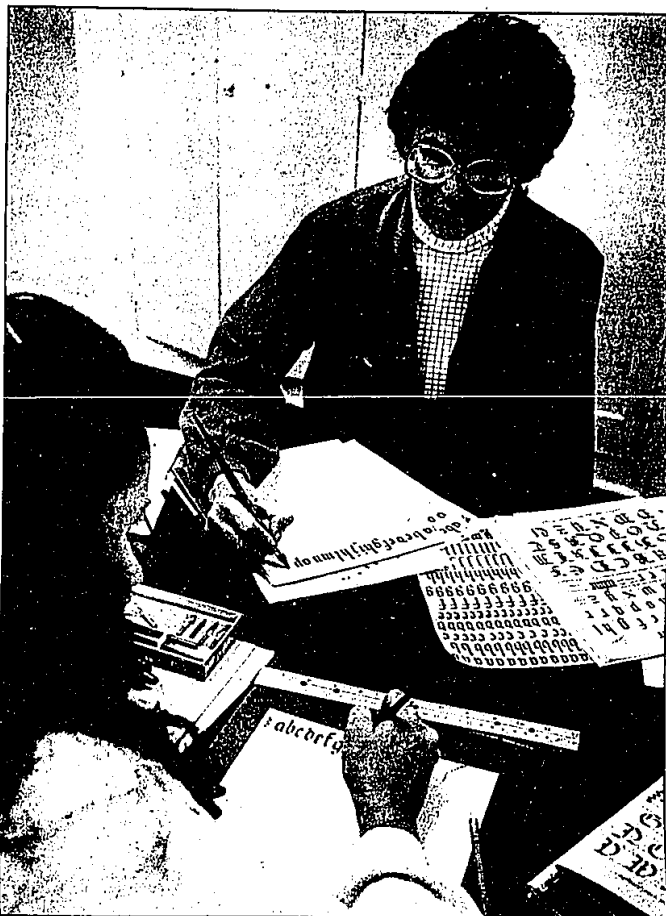
"We're looking at this as a special year so we're trying to double our contributors," Paine said.

Center officials are also trying to broaden the "range of contributors" by trying to involve not just the big money contributors but those who may, for example, contribute only a dollar.



Tina Jensen (right) and Doris Harper volunteer Farmington Community Center's 1985 community fund drive. They are seen here sending out thousands of letters to area residents asking for contributions to the

RANDY BORST/staff photographer



Jacquie Kaufman (left) and Evelyn Denton try their hand at calligraphy — one of the many activities and classes offered at the Farmington Community Center.

RANDY BORST/staff photographer

## INSIDE ANGLES

Know someone doing something notable? Let us know. Write: Inside Angles, Farmington Observer, 33202 Grand River, Farmington 48024.

**SUZANNE HOWLEY**, daughter of Mr. and Mrs. Alan Howley of Farmington Hills and a graduate of North Farmington High School, has been elected to the dean's list at Hillsdale College.

**DOUGLAS BRECKENRIDGE**, a Michigan State University junior, has been awarded a two-year Air Force ROTC scholarship. The scholarship covers tuition, lab fees, books, and room and board. He also receives an additional \$100 each month for expenses. The scholarship is awarded on the basis of academic achievement, curriculum, involvement in extracurricular activities, a personal interview and performance on an Air Force officer qualifying test. Breckenridge, an international relations/history major, is a member of the Honors College and a board member of the MSU International Relations Organization. He is the son of Sandra and Michael Breckenridge of Farmington Hills and a 1982 graduate of North Farmington High School.

**HENRY FORD HOSPITAL** is looking for men and women over 18 years old who would like to be hospital volunteers. Needed are people with all types of skills to help with patients or to perform clerical and other tasks. Nurses are needed, too, for blood pressure screening. If you would like to learn new skills and make new friends through volunteer service at HFH's Detroit or West Bloomfield outpatient locations, call the HFH Volunteer Services Department at 876-1875 Monday through Friday, 8:30 a.m. until 4:30 p.m.

A MICHIGAN WEEK Parade is set for Saturday, May 18, sponsored by Bloomfield Hills Parks and Recreation office. Anyone interested in participating is invited to call Bill Uplina, 334-5860.

**BRIAN HASKIN** and Karen Wuertz of the Farmington area have been elected to the dean's list at Hope College. To be named to the dean's list a student must have a minimum 3.5 grade point average on a 4.0 scale.

**CAROLYN BARBER**, daughter of Robert and Joan Barber of Northville, was initiated into membership of Chi Chapter of Alpha Gamma Delta at Michigan State University.

**JOHN KOINIS** of Farmington Hills was named a lecturer in the School for Associate Studies at Lawrence Institute of Technology. He received a bachelor's degree from Case Institute of Technology and a master's degree from Chrysler Institute of Engineering. In addition to lecturing at LIT, Koinis is a chief inspector at Chrysler's Corp.'s Detroit Axle Plant. He has held a variety of engineering positions at Chrysler since 1954. He is a member of the Society of Automotive Engineers and the Tau Beta Pi Engineering Honor Society.

**RACKET-SPORTS** enthusiasts can experience platform tennis, a game that combines the excitement of tennis and racketball, during an open house at the Waterford Oaks Court Games Complex Sunday, Feb. 3. The open house, which runs 2-4:40 p.m., will give participants an opportunity to try out the game. There is no charge. Equipment and a lesson are available. For those interested in playing regularly, two leagues will be forming at the court game complex. A mixed doubles league for intermediate players begins Feb. 15, and a mixed doubles beginner's league will start Feb. 17. For more information, call 858-4946.

**JOHN BERBIGLIA** of Farmington Hills has been named a lecturer in the School of Architecture at Lawrence Institute of Technology in Southfield. Berbiglia received an associate's degree and a bachelor's degree from LIT. He is also vice president and the electrical engineering department head at Edelstein Associates in Southfield. He is a member of the Institute of Electrical and Electronic Engineers.

**MARISA ARBO** and Donna Denno from the Farmington area have been elected to Wayne State University's chapter of Phi Beta Kappa, the national honorary scholarly society. They were elected as members for their outstanding scholarship in liberal arts.

**KEVIN VERNON LUNN**, son of Mr. and Mrs. Vernon Lunn of Farmington Hills, has been elected to the 1985 edition of Who's Who among students in American Colleges and Universities. Kevin, one of 21 students from Olivet Nazarene College, was elected by 100 faculty members and nine officers of the Associated Student Government based on his academic achievement, service to the community, leadership in extracurricular activities and potential for continued success. As an Olivet student he served as student representative to the student council for two years, chairman of the student tribunal and business manager of the student newspaper.

### HUDSON'S OVAL ROOM

**RALPH LAUREN**  
INTRODUCING THE  
RALPH LAUREN  
COLLECTION  
THURSDAY, JANUARY  
31 IN THE  
NORTHLAND OVAL  
ROOM AT THE  
WOODWARD  
SHOPS AT INVERHILL  
MODELING FROM 11  
TO 3