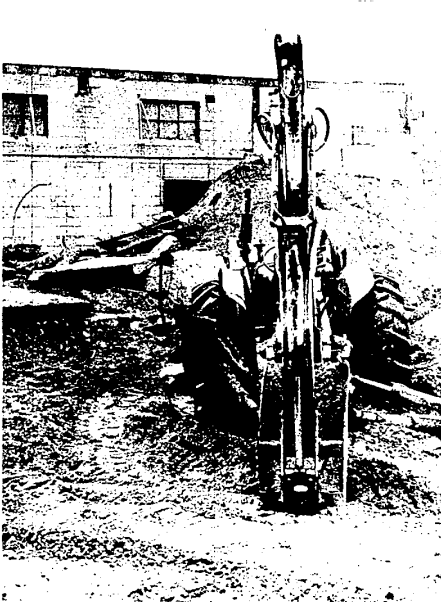


# *the farmington enterprise & observer*

Weekend of December 12-13, 1970

PER COPY 15¢



Vietnam war front? Tidal wave? Tornado or hurricane? Earthquake? Well, everything points to one of the above disasters but actually the pictures here are from the apparent devastation caused by the start of construction on the new freeway extending along Schoolcraft Road in Livonia and Redford Township. Beginning at a point just east of Levan, south of Schoolcraft and continuing east into the city of Detroit, homes, businesses, service stations, branch banks, real estate offices and even a church have all felt the results of a modern economy. The area between Inkster Road east to Telegraph is bare with the exception of three or four homes and buildings. Huge equipment is excavating, pulling down trees, clearing out debris and generally giving the entire area the appearance of a blighted district. And there'll be more like it when work begins on other freeways in Observerland.

