

Dream car

Good again, the Farmington/Farmington Hills Chamber of Commerce is introducing its annual Founders Festival by offering a chance to win a white Corvette as the grand prize in their sweepstakes. Working with the car are chief of chairman Walter Stuchlik and Bob Van Every. The Corvette will be on

display of Holiday Chevrolet in Farmington Hills during the promotion. In addition to the grand prize, chopping areas totaling \$A-600 will also be awarded. A total of 650 tickets will be sold at \$1.50 each. For more information, call the chamber of commerce at 374-3400.

Farmington Hills had fewer fires in '88

Continued from Page 1

"Anything else pretty much went down the drain," Blandford said. "The only thing that was a success was the report that..."

The fire department responded to 2,915 alarms in 1987 — an increase of 2.5 percent over 1986. That is the smallest increase since 1972.

February was the least active month for alarms last year, while July was the most active. In relation to time, 4-6 p.m. is the least active and 4-5 p.m. is the most active period.

A January fire alarm response time was 4:30 min., 4:37 min. and 4:40 min. respectively.

Conflicts will now construction in

the area previously undeveloped, contributed to the increase.

Total non-fire incidents increased by 27 percent. According to the report, last year was the second consecutive year where the number of total fires decreased.

Vehicle fires decreased by 23.8 percent.

Medical emergencies increased by 8.3 percent and represented the majority of emergency responses.

The largest increase in any single category was 53.1 percent for grass and brush fires, attributable to the extreme drought Michigan experienced last spring and summer.

The Fire Department immediately while an emergency is discovered.

Although the number of actual fires decreased in 1987, the total fire damage dollar loss increased by 51.7 percent for a total of \$1,763,422.

The single largest dollar loss fire for 1987 totaled \$276,241 which was of undetermined cause by a 3100 square foot dwelling in Jan. 1987. The owner was apparently preparing

food when some cooking oil caught fire.

Total property loss in 1987 was \$1,459,573; total content loss was \$434,649; total fire loss was \$1,763,422.

Twenty-three incidents of arson were recorded, 14 were to structures. Total property loss due to arson was \$141,769, total content loss was \$35,703.

State board weighs boundary appeal

ALSO IN 1988, the fire department's fire prevention program's first fire, water technique.

Along with the distributor program, and the new enhanced 911 emergency telephone system, a new concept known as "Home Alert" was initiated to educate the public to call

state appeal protest would make, but did say they are "very sensitive" when the issue involves students and where they will attend school.

State hearing officer Marian Bender could not say how long the

"We try to take care of these matters before the beginning of the school year," she said.

Farmington Observer

(ISSUE 137-810)

Published every Monday and Thursday by Observer & Business News, Inc., 225 E. Main Street, Farmington, MI 48121. Second-class postage paid at Farmington, MI 48121. Address all mail (subscriptions, change of address, form 3526) to P.O. Box 2422, Farmington, MI 48121. Telephone 351-0224.

SUBSCRIPTION RATES
(in Oakland County)

Homebound \$24.20 (E-newsletter in Michigan)

Homebound per copy 29¢

One year (E-newsletter in U.S.A.) \$50.00

All advertising published in the Farmington Observer is subject to the conditions stated in the application rate card copies of which are available from the advertising department, Farmington 31363 Street, Farmington, MI 48121. 371-6456. The Farmington Observer reserves the right not to accept an advertiser's order. Observer & Business News has no liability for loss of this newspaper and only subscribers are on an advertiser's list.

The Only Thing Lower Than His Grades Is His Self-Esteem.

Sylvan understands how tough it can be for a child who's falling behind in school. And how poor it can feel when failure turns into success.

Sylvan can help your child.

At Sylvan, we can help your child develop the self-confidence—and the courage—to do better in school. In fact, we guarantee it.

Sylvan's proven approach to learning has already helped thousands of children. In a stress-free environment of positive encouragement and personal attention, we guarantee your child's reading or math skills will improve by at least one full grade level in just 30 instruction hours. Or we will provide up to 12 additional hours at no further cost.

Call today for more information. There's no obligation.

Sylvan Learning Center
5755 W. Maple (W. of Orchard Lake) West Bloomfield 737-2660

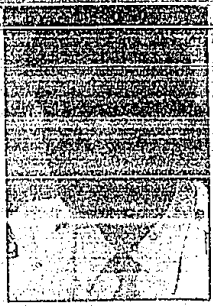
2-hour standoff ends with arrest

Continued from Page 1

and a determination made on the woman's emotional and mental status.

Clinton Valley Center officials said the department the hearing would be held within two weeks, Goss said.

"Our main concern is that... she can lead a happy, healthy life," Goss said. "She's certainly a person in need of treatment. The warrants were meant to ensure she gets treatment."



Gerry Goss public safety director

"We haven't found anything yet," he said. "We're just treading on some new ground."

Goss stated that the incident was not stress-filled, even though it was lengthy.

"The time element is on our side, you see," he said. "We don't let time bother us. As long as nobody is in danger and we have control of the situation, there's no reason to rush it."

Statement delayed

Continued from Page 1

field Township and Novi, have supported the connector road, which would be built west of Haggerty Road through the communities of Novi and Commerce Township.

A Michigan Department of Transportation spokesman said more time is needed to respond to input from interested federal agencies, including the Fish and Wildlife Service and the Environmental Protection Agency. The cooperative effort should shorten overall study time by addressing

concerns for environmental issues during the draft process.

A public hearing on the draft statement will be scheduled for early June, according to information from the MDOT. The department plans to take bids on the first construction contract late this year.

The project calls for improvements in the Haggerty Road corridor from the I-95 and I-75 interchange north to Pentlite Trail, relieving traffic congestion by providing access to the state freeway system.

RHEUMATOID NODULES

Rheumatoid nodules are firm lumps that develop between skin and bone in pressure areas: the inside of the elbow, the back of the elbow, the buttocks, and at the back or sides of the feet. These nodules can cause considerable discomfort as they pinch the area between their location and the surface of the skin.

Physicians treating patients with rheumatoid arthritis look carefully for nodules, as their presence is associated with more severe arthritis than in persons who do not have this change.

The nodules develop as a result of the deposition of immune proteins clumping in small blood vessels of the skin. The clumps block off the blood vessels, resulting in insufficient blood supply to the surrounding tissues. The body's response to this lack of blood supply is to form a hard lump of tissue that becomes the rheumatoid nodule.

Rarely rheumatoid nodules develop in the eye, heart and lung. When appearing in the lung, the nodule can be difficult to distinguish from cancer. A long and expensive workup may ensue before the doctor can verify the presence of a rheumatoid nodule rather than a tumor.

\$200 REBATE AIR CONDITIONING SALE

Specialized For You

FOOD'S IN BLOOM SEATTLE BUDS Every Monday IN TASTE

\$400 Rebate

Call Paul Jingoziann at (313) 851-1001.

Supplement your retirement with the PaineWebber Provider™

Tax-free cash flow at retirement

\$13,500 each year for life!

Call Paul Jingoziann at (313) 851-1001.

PaineWebber
Nottingham Drive 1375, Suite 150, Farmington Hills, MI 48108

The PaineWebber Provider™ features Life Income, a universal life insurance policy from First Capital Life Insurance Company. Not available in New York, New Jersey & Ohio.

Based on a 40-year old male, nonsmoker, making an annual premium payment of \$2,100 (initial \$1,650, interest rate of 10% effective as of 1/1/88). Rates are subject to change without notice. Guaranteed minimum death benefit of \$25,000. No out-of-pocket access to cash value through policy loans.

DIET CENTER WORKS!

Twice a week is better

LOSE FAT, NOT MUSCLE
EAT REAL FOOD
EASIEST DIET AVAILABLE

Call today for a free consultation.

LIMITED OFFER!
\$50
Lose Up To 50 lbs.
For Only \$29.99

569-2669 Southfield

All Major Credit Cards Accepted