

COMMUNITY MESSENGER

Community Messenger features spiritual announcements from Oakland County religious institutions. Write: Community Messenger, c/o Beliefs & Values Editor, Observer & Eccentric Newspapers, 805 E. Maple, Birmingham, MI 48009. Our fax number is (248) 644-1314.

YIDDISH CULTURE
Raisins, Almonds and Dates: A continuation of Yiddish Culture, "continues to meet on Monday mornings from 10 to 11 a.m. at Borders Books and Music, 30995 Orchard Lake Road, Farmington Hills. The eight-part Latte & Learning adult study series led by Rabbi Aaron Bergman is a program of Eilu v' Eilu, the metro Detroit cooperative adult Jewish learning partnership sponsored by Cong. Beth Abraham Hillel Moses, Beth Shalom and B'nai Moshe, Hillel Day School and the Michigan Branch-Women's League for Conservative Judaism. The series highlights the distinction between Yiddish language and Yiddish culture. No knowledge of Yiddish is required. Tuition is \$5 per session for members and \$7 for non-members. Advance registration encouraged, but walk-ins will be accommodated. Call (248) 737-2931.

HONORING PARENTS
Rabbi Elliot Pethler is offering adult study classes on the theme, "Honoring Your Parents: A Mitzvah and a Challenge" through Eilu v' Eilu, the metro Detroit cooperative adult Jewish learning partnership sponsored by Cong. Beth Abraham Hillel Moses, Beth Shalom and B'nai Moshe, Hillel Day School and the Michigan Branch-Women's League for Conservative Judaism. No knowledge of Hebrew is required. The in-depth, four-part series will be held at 11 a.m. on Thursdays beginning March 6, at Cong. B'nai Moshe, 6800 Drake Road, West Bloomfield. Tuition for the series is \$20 for members and \$28 for non-members. Students may register for individual sessions at a rate of \$5 for members and \$7 for non-members. The one-time overview of the topic will be presented at 8 p.m. on Wednesday, March 4, at Hillel Day School, 32200 Middlebelt Road, Farmington Hills. Tuition is \$5 for members and \$7 for non-members. Call (248) 851-3220.

SHABBAT SCHMOOZE
Cong. B'nai Moshe, 6800 Drake Road, West Bloomfield, is hosting its bi-monthly Shabbat Schmooze from 10 to 11:30 a.m. on March 7 and 21. Youth in grades 7 through 12 gather for a little praying, a little learning, a little noshing and a lot of schmoozing while learning about Israel, Torah and Jewish values. Featured guests include Ethan Gilson, Larry Gansberg and Pearlina Budzin. For information, call (248) 788-3600. The temple's family night from 6 to 8 p.m. on Friday, March 27, features an upbeat Shabbat service followed by a traditional chicken dinner in the Budzin Social Hall. There will also be dancing and entertainment for young children. The cost is \$13.60 for adults and \$5 for children ages 3 to 12. Children under 3 are welcome at no charge. The event is sponsored by the B'nai Moshe youth committee in collaboration with Rekindling Shabbat.

PURIM STUDY
The Jewish Community Center, 6600 Maple, West Bloomfield, is holding a study session in honor of Purim from 10:30 a.m. to noon on Tuesday, March 10. Rabbi Rod Glogower will present a pre-Purim class on the Talmudic origins of the mitzvah of mishloach manot (Purim parcels). The session is part of a semester-long text seminar for adults entitled, "Rabbinic Sources, Visionary Perspectives," sponsored by the JCC of Metro Detroit and the Cong. B'nai Moshe of West Bloomfield. This is an intermediate-advanced class designed for those with text study experience. Advance registration for the session is encouraged but students may register at the door. The fee is \$10 for members and \$12 for non-members. Call Beth Greenapple at (248) 661-7649.

CELEBRATING PURIM
Cong. Beth Shalom, 14601 W. Lincoln Road, Oak Park, is holding its annual Purim Carnival from noon to 3 p.m. on March 8. The first 500 kids and adults dressed in costume receive a special gift. The event features a moonwalk, games, clowns, and a "tail lock-up." Concessions include pizza, cotton candy, Good Humor and Hamantaschen. Tickets for games and food are being pre-sold at 5 for \$1 at the

synagogue office. Tickets on the day of the carnival are 4 for \$1. Raffle tickets for items like necklaces, gift packs, pocket organizers and alarm clocks sell for \$1 each or 6 for \$5. The entire community is invited to attend the Purim Mishtry on Wednesday, March 11. Everyone is encouraged to wear a costume. Dinner is at 5:30 p.m. and the Megillah reading begins at 7 p.m. Reservations are required for dinner. The cost is \$9 for adults and \$5 for children ages 5 to 13. Children under 5 are free. The Megillah will also be read at 7

a.m. on Thursday, March 12. For information or reservations, call (248) 647-7970.
TALMUD SERIES
"RSPV: Rabbinic Sources, Visionary Perspectives," a weekly text seminar for adult learners, meets from 10:30 a.m. to noon on Tuesdays in the Janice Charach Epstein Museum Gallery at the D. Dan & Betty Kahn Building of the Jewish Community Center of Metro Detroit, at the corner of Maple and Drake, in West Bloomfield. The open-enrollment class taught by Rabbi Rod Glo-

gower welcomes new students to join the group. The series is co-sponsored by the Judaic Enrichment Department of the JCC and Cong. B'nai Moshe. The 12-part series features Talmudic attitudes toward aging and special holiday study sessions. Tuition is \$10 per session for members and \$12 for non-members. The minimum registration is for four classes, except for special, pre-holiday study sessions that can be attended on a one-time basis. This is an intermediate-advanced class for adult learners with text study experience. The ability to

follow a text in the original Hebrew or Aramaic is helpful but not required, since the texts are translated into English line by line. To register, call (248) 661-7649.
ANNIVERSARY BOOK
Dr. Norman Pritchard, pastor of Kirk in the Hills in Bloomfield Hills, presented "Dreams and Visions," the story of the Kirk's first 50 years, to Karen Kattulis-Carter, director of the Bloomfield Township Public Library. The 144-page volume was published in connection with the church's

recent Golden Anniversary celebration. It features 200 full color photographs illustrating the historical growth of the Kirk, from its founding in 1947 to its position today as the largest congregation in the Presbytery of Detroit.
WORDS OF FAITH
Crown of Life Lutheran Church, 2975 Dutton Road, Rochester Hills, offers a daily inspirational message of words to live by conveyed by Pastor Terry J. Rebert. To listen to the message, dial (248) 652-8857.

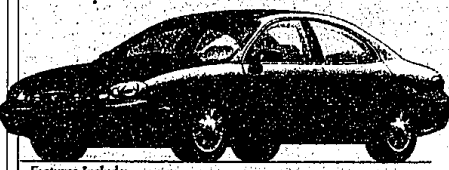
The Best Savings You Can Imagine.

1998 MERCURY SABLE GS

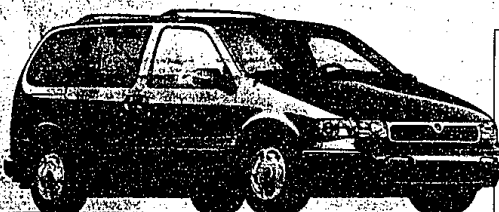
\$269

PER MONTH FOR 27 MONTHS*

27-Month/27,000-Mile Red Carpet Lease	
Capitalized Cost	\$18,667
Down Payment (20% of RCL Cash)	\$1,630
Refundable Security Deposit	\$275
First Month's Payment	\$269
Cash due at signing	\$2,194
\$15/mile over 27,000 miles	



Features Include:
3.0-liter V6 engine • Second Generation dual air bags* • Tilt steering column
Flip-fold center console • Power windows and door locks.



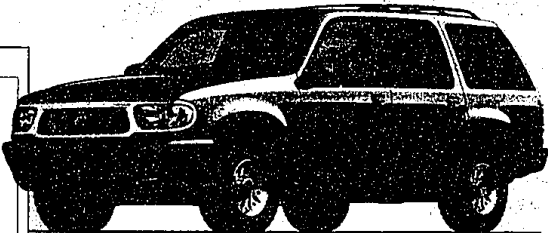
1998 MERCURY VILLAGER GS

\$279

PER MONTH FOR 36 MONTHS*

36-Month/36,000-Mile Red Carpet Lease	
Capitalized Cost	\$22,631
Down Payment (20% of RCL Cash)	\$1,500
Refundable Security Deposit	\$300
First Month's Payment	\$279
Cash due at signing	\$2,079
\$15/mile over 36,000 miles	

Features Include:
3.0-liter SOHC V6 engine • Flexible seating system • Second Generation dual air bags* • Front-wheel drive • Power rack-and-pinion steering



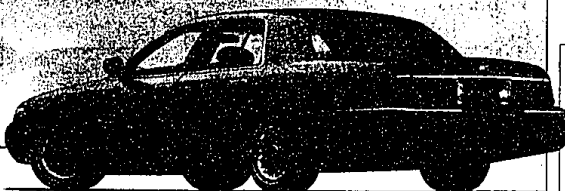
1998 MERCURY MOUNTAINEER

\$369

PER MONTH FOR 24 MONTHS*

24-Month/24,000-Mile Red Carpet Lease	
Capitalized Cost	\$28,384
Down Payment	\$1,990
Refundable Security Deposit	\$375
First Month's Payment	\$369
Cash due at signing	\$2,739
\$15/mile over 24,000 miles	

Features Include:
5.0-liter OHV V8 engine • Power windows and door locks • Second Generation dual air bags* • 4-wheel disc anti-lock brakes • Fingertip speed control with tap-up/tap-down feature



THE NEW 1998 MERCURY GRAND MARQUIS

\$500

CASH BACK*

— OR —

Special Introductory Lease Rates

Features Include:
4.6-liter SOHC V8 engine • Second Generation dual air bags* • 8-way power driver's seat • Power decklid release, locks and windows • Dual power fold-down mirrors • Rear seat heat ducts • Fingertip speed control with tap-up/tap-down feature

ARRIVING DAILY!

Imagine yourself in a Mercury

www.lincolnm Mercury.com

*1998 Mercury Sable GS MSRP \$19,993 excluding title, tax, license fees. Lease payment based on average capitalized cost of 91.36% of MSRP for 24-month closed-end Ford Credit Red Carpet Leases purchased in the Great Lakes Area through 11/30/97. Lessee is responsible for excess wear/tear. For special lease terms and \$750 RCL cash take new retail delivery from dealer stock by 4/2/98. 1998 Mercury Villager GS with PEP #02A MSRP \$26,783 excluding title, tax, license fees. Lease payment based on average capitalized cost of 91.31% of MSRP for closed-end Ford Credit Red Carpet Leases purchased in the Great Lakes Area through 11/30/97. Lessee is responsible for excess wear/tear. For special lease terms and \$2,000 RCL cash take new retail delivery from dealer stock by 4/2/98. 1998 Mercury Mountaineer with V8 engine, AWD and PEP #55A MSRP \$31,045 excluding title, tax, license fees. Lease payment based on average capitalized cost of 91.43% of MSRP for 24-month closed-end Ford Credit Red Carpet Leases purchased in the Great Lakes Area through 11/30/97. Lessee is responsible for excess wear/tear. For special lease terms take new retail delivery from dealer stock by 4/2/98. For \$500 cash back on 1998 Mercury Grand Marquis, take new retail delivery from dealer stock by 4/2/98. *Always wear your safety belt and secure children in the rear seat.



Visit Your Metro Detroit Mercury Dealer.

FLINGOEN
Mercury

ANN ARBOR
Apollo
2800 W. Stadium Blvd.
Ann Arbor, MI 48106
(313) 668-6800

DEARBORN
Krug
2150 Michigan Ave.
Dearborn, MI 48124
(313) 279-8800

DETROIT
Bob Maxey
1000 Maple Ave.
Detroit, MI 48202
(313) 893-8800

DETROIT
Park Motor
1800 W. Grand Blvd.
Detroit, MI 48202
(313) 869-5000

FARMINGTON
Bob Dusseau
1655 Grand River Ave.
Farmington Hills, MI 48334
(248) 474-3770

GARDEN CITY
Stu Evans
1500 W. 14th St.
Garden City, MI 48135
(313) 425-4100

NOVI
Varsity
4925 Grand River
Novi, MI 48240
(248) 345-8800

PLYMOUTH
Hines Park
4850 Plymouth Rd.
Plymouth, MI 48175
(313) 958-8800

ROCHESTER HILLS
Crisman
1855 W. Park Rd.
Rochester Hills, MI 48309
(248) 852-4200

ROSELAND
Arnold
2800 Greenfield
Rochester, MI 48306
(248) 485-6000

ROYAL OAK
Diamond
221 North Main Street
Royal Oak, MI 48067
(248) 541-8800

SOUTHFIELD
Star
24150 West 12 Mile Rd.
Southfield, MI 48034
(248) 354-0000

SOUTHGATE
Stu Evans
8800 East Street
Southgate, MI 48088
(313) 285-8800

STERLING HEIGHTS
Crest
16200 West 16th St.
Sterling Heights, MI 48310
(588) 910-0000

TRIV
Bob Borst
1950 West Maple
Triv, MI 48064
(248) 641-0000

WATERLOO
Mel Farr
4515 Highland Rd.
Waterloo, MI 48186
(248) 681-9500

YPSILANTI
Sesl
9550 Lake Michigan
Ypsilanti, MI 48197
(313) 482-7711