



TO BE TRUTHFUL... about the whole thing, we can modestly say that we dislike only one thing...

WE NOTICE NOW... a rather unusual phenomena of human behavior. Perhaps it is the tendency to consolidate and join forces...

THOSE LIGHT POSTS... that "Thanksgiving turkey has been reduced to a few dark stains on the tablecloth..."

IT WASN'T SO BAD... during the warm months when the screens were on and the doors were open...

WE KEPT WARNING... you that it was coming closer all the time, but what happened? Christmas is only 20 more shopping days away...

BY NOW... that "Thanksgiving turkey has been reduced to a few dark stains on the tablecloth..."

WE'RE HAVING... another one of those colossal affairs for the ladies this Saturday afternoon when the Farmington Town Club sets up card tables...

THE FARMINGTON GYM... will also be full of activity Friday night when the local high school takes on Plymouth in a contest...

WE'RE STILL... hearing of those garden freaks. Only after so much snow, they are becoming more freakish than ever...

Girl Scouts Get 1950 Objectives

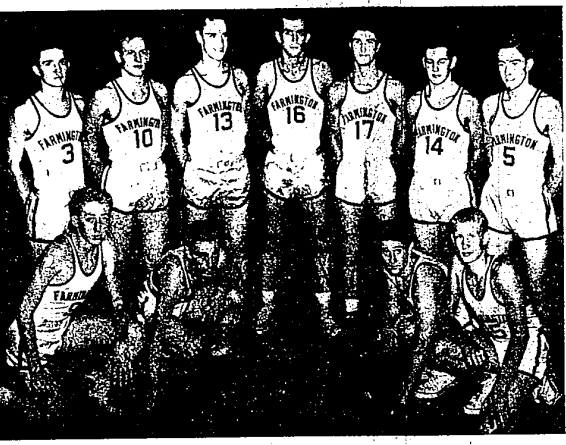
Delegates Mrs. William Barnum and Mrs. James Lillie, commissioner and vice-commissioner of the Farmington Girl Scout Council...

Mrs. Lillie reports "National Objectives" for 1950 are furthering the voluntary partnership of girls and adults...

Mrs. Lillie also states, "We desperately need more voluntary adult workers. The program is so vast and varied there is a field for everyone..."

International service project for the coming year is "School Mates" slogan is "Fill a school bag for a friend..."

International service project for the coming year is "School Mates" slogan is "Fill a school bag for a friend..."



READY FOR ACTION against Plymouth - High School Friday night are these members of the 1949-50 Farmington varsity basketball squad...

Two New School Buses To Begin Trips Next Week

Two new school buses, one a 45-passenger and the other a 54-passenger, are expected to be in operation in the Farmington Township School District next week...

Farmington To Open Cage Season This Friday Against Plymouth

Farmington High School will open their 1949-50 basketball season this Friday evening, December 2, when they play host to Plymouth High School in a non-league contest...

School Board Sets Building Use Rules

The Board of Education of the Clarenceville School District has adopted a set of rules and regulations for the use of school buildings and facilities in the District...

Township Board To Hold Special Meeting Thursday

A special meeting of the Farmington Township Board will be held on Thursday evening, December 1, at the Farmington Town Hall for the purpose of receiving bids on the sale of bonds for the water system in the Woodville Subdivision...

Farmington Digs Out From Under



City employees spent Friday digging out from under the six-inch thick sheet of snow that covered Farmington's thoroughfares...

United Fund Stalled At 93%; Canvassing Not Completed

Total Stands At \$4,444.98 With \$369.35 Needed To Fill Quota

Farmington's attempts to form a single charity campaign received encouragement Tuesday night when the local committee on Budgets and Admissions to the Farmington United Fund and Community Chest...

The quota, tentatively pegged at \$5014.33, was passed \$200 by dropping the Our Lady of Sorrows Recreation Commission...

Christmas Rush On At Post Office

An estimated 25 persons will be added to the present Farmington Post Office staff to handle the expected volume of Christmas mail...

The extra personnel is in addition to the regular staff of 38 persons. "Applications of persons interested in working during the Christmas rush are now being screened," Lee stated...

JCC BEGINS WORK ON CHRISTMAS DECORATIONS

Members of the Farmington Junior Chamber of Commerce are hard at work this week completing Christmas decorations throughout the Farmington business district...

Evergreen boughs have been placed on the street lamps throughout the business district. Special decorative ornaments will be installed on the lights with Christmas messages and drawings on them...

On Saturday, December 24, the Jaycees will escort Santa Claus into Farmington and to the Town Hall Park where he will greet all the children and grownups, too...

Christmas Club Checks Total \$78,684.50

1100 checks totaling \$78,684.50 were mailed to Christmas Club members from the Farmington State Bank Monday. This is an increase of 125 members over last year's 975, who received a total of \$59,000.

Of the money to be distributed, a portion will be redeposited in savings accounts. Christmas shopping lists will be mailed and will absorb much of the amount also.

Garden Club To Elect Officers

Election of officers for the coming year will take place at the regular meeting of the Farmington Garden Club to be held on Monday, December 5, at 12 p.m. at the home of Mrs. William John Spicer, 2415 Farmington Road.

Officers for the past year will give their annual reports at the meeting. Following the meeting, there will be a special Christmas program with Mrs. Walter Humphries as soloist. Dessert and beverage will be served by the hostesses.

Memo - Those Unsealed Christmas Cards Take 2c Stamps Now

Don't try to mail your Christmas cards this year with 1 1/2c stamps, Postmaster Norman C. Lee warned this week's mail carriers and they bear no return address.

By way of explanation he pointed out that the postage rate on unsealed greeting cards, which travel by first class mail, was raised to 2c last January.

So don't try to mail this year's Yule greetings with 1 1/2c stamps, left over from last Christmas, he cautioned. All sorts of embarrassing things may happen...

Your mail carrier may return the cards to you stamped, "Insufficient Postage." Or they may be held until the addressee supplies the additional postage required by the new law before the mysterious envelope...

Christmas cards carrying 2c stamps are third class mail. They must not be sealed and must not contain personal messages. Only one effort is made to deliver them.

Or your cards may be shunted into the Dead Letter Office, if they are deposited at the peak of the Christmas mailing rush and they bear no return address.

Inside Features

- Blue and White Pg. 2, Sec. 11
Calendar of Events Pg. 12
Classified Ads Pg. 7, 8
Correspondence Pg. 10
Page 2
Michigan Mirror Page 2
Trojan Banner Pg. 4
Washington Merry-Go-Round 2