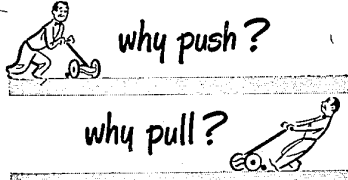


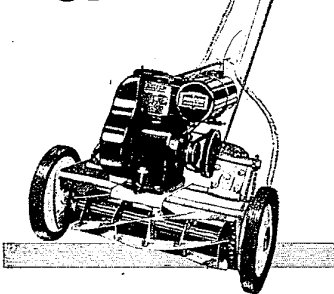
No need to wait longer for televisions — get a set right away. Only 20 per cent down, 18 months to pay. At Farmington Radio and Television Service, across from Kroger's on Grand River. Telephone 0947.

The secret of cooking fish is to use low heat and never overcook it. Fat fish may be broiled or baked. Leaner fish is best broasted with a sauce or cooked with fat to prevent dryness advises Michigan State College home economists.



NOW YOU CAN OWN A POWERFUL

PINCOR P-118 POWER MOWER
\$8950



No longer need your small lawn mow big, back-breaking mowing jobs! Lawn mowing's a smooth, relaxing walk when you follow the new PINCOR P-118 power mower around your yard. Quicker than you can say "Good-bye" the lawn needs mowing again! This keen-cutting PINCOR gets down to business, trimming your grass just the way you like it done — in no time at all.

We sincerely believe the new PINCOR P-118 for small lawns is the best buy in the field today. It has the famous PINCOR-built 1 1/2 H.P. 4-cycle engine—easy starting, with plenty of reserve power for savings on gas, oil, strain and wear. See all of its big features, including the 18-inch cutting unit, adjustable cutting height and quick-responding hand controls. Let us show you this great new PINCOR now!

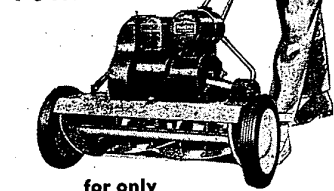
Say goodbye to push-pull lawn mowing!



and why should YOU?

You can now own a Self-Propelled P-22

PINCOR POWER MOWER



for only \$14950

- Full 22 inch cutting width—cuts wide swath, cuts mowing time!
- Pincor-built 1 1/2 H.P. 4-cycle easy starting engine. Reserve power that saves gas, oil, strain, wear!
- Built-in sharpening feature—simple to operate. And no extra cost!
- Hand-adjusted cutting height—1 1/2 to 2 1/2 inch-trim your lawn just the way you want it!
- Visible scale for height adjustment.
- Flipper control!

LET US SHOW YOU ALL OF PINCOR'S PRACTICAL FEATURES! COME IN TODAY!

ROBERTSON HARDWARE CO.

GRAND RIVER at 8 MILE ROAD
Phone KENwood 1-1099 Farmington 9047
STORE HOURS:
8:30 a.m. to 6:00 p.m. Fridays and Saturdays till 7:00 p.m.
PLENTY OF CONVENIENT PARKING SPACE

The Trojan Banner

Seventh Grade Tops Honor Roll

At the end of the fifth marking period the reports show the seventh grade with 21 on the honor roll. The eleventh grade ranked second with 17 while the twelfth and eighth grades each had 14 students.

7th Grade — Frederick Gault, Bob Gross, Arla Haight, Joe Mitchell, Nancy Moore, Sharon Moreland, Margaret Petch, Karen Russell, Douglas Savala, Robert Enell, Donna Cobb, Beverly Calvin, Donna Dorman, Dorris Lynette, Janet Frey, James Gibb, Sally Hill, Donna Pudvan, Garrett Van Camp, Evelyn Werab, Judy Wing.

8th Grade — Dorothy Riddell, Bette Lou Roberts, Bette Mae Bichell, Winnifred Lawson, Kenneth Jacobson, Betty Gourlay, Dorothy Robertson, Ruth Strandburg, Lynn Lou Barnes, Delores Koenig, Mary Seaton, Elaine Hall, Robert Rickett, Cynthia Enley.

9th Grade — Naomi Horton, Marian Monroe, Janet Loomis.

10th Grade — Helen Barnes, LeVina Boling, Doug Gault, Wally Groves, Ray Jacobson, William Kytola, Bob McGowan, Allen Schweizer, Ronald Simebeck, Wyn Barnes, Joan Chestnut, Marion Gray, Loretta Kroeckch, Donna Kulling, Kay Riddell.

11th Grade — Carol Frey, Jan Behrens, Phyllis Brown, Donna Garchow, Betty Gil, Gerald Groves, Ray Jacobson, William Kytola, Bob McGowan, Allen Schweizer, Ronald Simebeck, Wyn Barnes, Joan Chestnut, Marion Gray, Loretta Kroeckch, Donna Kulling, Kay Riddell.

12th Grade — Virginia Boling, Wanda Barnes, Norma Gault, Nancy Latimer, Dick Resume, Robert Riggs, Albert Simebeck, Bill Snelts, Barbara Sowers, Betty Compeau, Pauline Griffin, Sam Horton, Patricia Palmer, John Shufelt.

CHOIR GIVES ANNUAL SPRING CONCERT IN GYM

The annual Spring Concert given by the choir of Clareville High School will be presented Friday, May 19, at 8:00 in the high school gymnasium. The senior choir, directed by Mr. Leo Lawrence, will sing a selection of songs which will include "Trees", "Dry Bones", "I Heard a Forest Praying", "Monastery Garden", "The Night Has a Thousand Eyes", "Lost Chord", "Make Believe" and "Silver Moon". The grade school choir will join with the senior choir to sing the "Eric Canal" and "Battle Hymn of the Republic". A solo, "The Lord's Prayer", will be sung by Laura Stevenson.

In 1889 James Riley in Glasgow issued a report of experiments he had conducted with nickel steel. Since 1891 the use of nickel alloy steels has steadily increased.

THE TROJAN BANNER
EDITOR: Robert Riggs
REPORTERS: Jean Bates, Larry Cox, Gus Davis, Barbara Sowers, Jean Cashman, Sally LeMieux, Nancy Latimer, Ronald Simebeck, Norma Gault.
ADVISOR: Mrs. Hess
Published by the Clareville High School Journalism Class through the courtesy of The Farmington Enterprise

Editorial

Anyone who has passed the Clareville High School in the past week has probably noticed the improvement of the lawn. This may be added to the long list of things that the Student Council of Clareville has done the past school year.

The lawn was in poor condition after the water main had been installed. Dirt and some heavy equipment were dragged over spots of it causing the loss of grass. The Student Council took the situation in hand and acquired the necessary material. The results can be easily seen.

The cooperation of the shop helped in producing the signs which mark the newly seeded portions of the lawn. The students of Clareville appreciate these things being done by the Student Council and we are sure they will do all they can to help keep the lawn in good condition.

CALENDAR

SCHOOL YEAR 1950-51
September 5, Teachers Meeting.
September 6, School opens.
October 19 - 20, Teachers Institute.
October 20, End first marking period.
October 26, Report cards.
November 30, December 1, Off for Thanksgiving vacation.
December 1, End second marking period.
December 6, Report cards.
December 22 noon to January 2, Christmas - New Year's vacation.
January 27, End Semester.
March 16, End fourth marking period.
March 21, Report cards.
March 23 - 26, Easter recess.
April 27, End fifth marking period.
May 2, Report cards.
May 20, Memorial Day.
June 10, Baccalaureate.
June 12, Class Night.
June 14, Graduation.
June 15, End of school year.

For jewelry platinum, hardened with 5 to 10% iridium or 5% ruthenium or palladium with 5% ruthenium, is generally employed in the United States. Such tarnish-resistant alloys have very satisfactory mechanical properties, too.

Wanna Buy A Duck — See The Classifieds For Anything You Need

GENE HALLMAN BUILDER'S CLINIC

31171 10 MILE ROAD (Corner Orchard Lake)
PHONE 1043

- LUMBER, HARDWARE, SHINGLES
- COMBINATION WINDOWS, SIDING, PAINTS
- ELECTRICAL SUPPLIES
- FLINTKOTE No. 2
- ASBESTOS SIDING . . \$8.50 per 100 sq. ft.
- FENCE WIRE and FENCE POSTS
- COMBINATION WINDOWS 30% OFF
- COMBINATION DOORS

ARE YOU BUILDING A GARAGE?
Get Your Materials From Us and We Will Cut Your Rafters FREE

WE HAVE ON DISPLAY
GLIDE-A-WAY Champion and Crawford OVERHEAD DOORS

You pay the regular price of the door only and we will install it FREE — this includes any door on the market.

• WALL PAPER •
Hundreds of Samples On Display
We Are Open WEEKDAYS 7:30 to 7 p.m. SUNDAYS 10 a.m. to 5 p.m.

I SAVE YOU \$\$\$
GARAGES
Custom Built by Wells-Craft Division of Builder's Clinic
COMPLETE HOME MODERNIZATION NO MONEY DOWN
F. H. A. TERMS
CEMENT WORK OF LASTING QUALITY
FREE ESTIMATES
Deal Direct With Builder (15 Years a Craftsman)
Offices at 16134 BURT ROAD Phone KE, 1479A
27200 Grand River, KE, 2-5340
BUILDER'S CLINIC FARMINGTON 1043

Gymnasium Scene Of Senior Prom

The Clareville Seniors present their annual prom Saturday night, May 20, in the High School gymnasium from 9:00 to 12:00. The theme for decorations will be a garden scene, gaily decorated. Dainty refreshments will be served.

Music will be furnished by Cy Richards and his nice piece orchestra. Mr. and Mrs. Schmitz, Mr. and Mrs. Millard and Mr. and Mrs. Wetman will be the chaperones.

Seniors who are playing an important part in planning the prom are: entertainment, Betty Vincent, Barbara Hespy and Lillian Pauley; tickets, Wanda Barnes; decorations, Nancy Latimer, Betty Rousseau, Jackie Kudla, Jean Ludos, Marilyn Russell, Roxie Whyte, Virginia Boling, and Norma Gault.

Girl Scouts Plant Tree
Clareville Girl Scouts of Troop No. 2 planted a tree in commemoration of Arbor Day. The tree is at the south end of the school building in the front yard. The leaders of this troop are Mrs. Elizabeth Russell and Mrs. Rozella Wheeler.

Students Receive Fluorine Treatments

Students of the Clareville School District will have the service of a Children's Fund Dental Unit. These services will begin June 19 and will carry through September 5.

It is hoped that 375 to 400 youngsters will receive fluorine treatments. The main eligibility is age. No one who is over 15 or who has been in the ninth grade will be given treatments. The priorities for these treatments are as follows: The second grades will be taken first, the fifth grade second, the third grade third, the fourth grade fourth, the first grade fifth and the kindergarten last.

Classified Ads Bring Big Results — Cost Little

WE WILL SELL FAMOUS LAKEVIEW HATCHERY CHICKS

In Farmington
At Your Community Sale
38855 Grand River
(Pete Knowlton)

Sale FRIDAY, MAY 19

At Least

- 1000 Mixed Chicks
- 500 Starter Pullets
- 500 Day Old Pullets

Call Southfield 3502

To Order Lakeview Chicks or Starter Pullets up to 8 Weeks Old

All Breeders Blood Tested, Banded and Inspected 3 WEEKS LIVABILITY GUARANTEED ON DAY OLD CHICKS

24400 INKSTER ROAD (Just off 10 Mile)
— Branch of —
LAKEVIEW FARMS AND HATCHERY
EXETER, ONTARIO, CANADA

Growers Supplies and Equipment

For The LARGE and SMALL GROWER

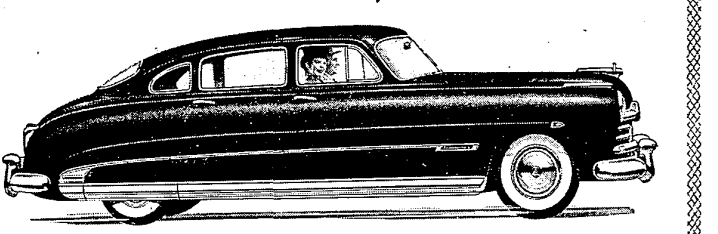
SPRAYERS and DUSTERS
COMPLETE LINE SPRAYS & DUSTS
IRRIGATION SYSTEMS

WE WILL GLADLY HELP YOU PLAN YOUR SPRAY SCHEDULE

- Pumps
- Pipe
- Sprinklers

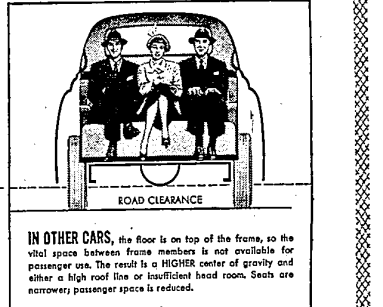
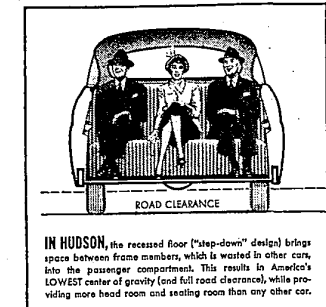
Large & Small Installations

EASTERN MICHIGAN ORCHARD SUPPLY CO.
Ph. Farm. 1296-J. 28627 Grand River, Farmington East of Middlebelt



Why the lowest-built car is best for you

Through the development of the RECESSED FLOOR, Hudson engineers have brought to you the priceless advantages of lowness which the industry has been striving for since the beginning of the automobile!



IN HUDSON, the recessed floor ("step-down" design) brings space between frame members, which is wasted in other cars, into the passenger compartment. This results in America's LOWEST center of gravity (and full road clearance), while providing more head room and seating room than any other car.

IN OTHER CARS, the floor is on top of the frame, so the vital space between frame members is not available for passenger use. The result is a HIGHER center of gravity and either a high roof line or insufficient head room. Seats are narrower, passenger space is reduced.

HUDSON
Most Room! Best Ride! Safest!

HUDSON, with recessed floors, their great array of high-quality, long-life features, and advanced design, are leaders in resale value, as shown by Official Used Car Guide Book!

ONLY CARS WITH "STEP-DOWN" DESIGN • NOW . . . 3 GREAT SERIES • LOWER-PRICED PACEMAKER • FAMOUS SUPER • CUSTOM COMMANDORE

TAVERN AUTO SALES
28001 GRAND RIVER W.M. — DON & BOB SHAW PHONE FARM. 1692 — KE. 2-0181