

The Farmington Enterprise

Official Publication for Farmington City and Township

SEVENTY-SEVENTH YEAR - NO. 30

FARMINGTON, MICHIGAN, WEDNESDAY, SEPTEMBER 1, 1965

EIGHTEEN PAGES

Total Registration in Area School Systems 19,580

Alarm clocks will be ringing all over the Farmington area next week reminding more than 19,580 students it's time to get ready to go to school. This is an increase of 1,780 over last year's enrollment of 17,800.

C'ville Gives School Data On Opening

The Clarenceville School District's opening schedule, as established by the Board of Education, was released this week. With the re-assignment of some students at the elementary level, allowing the Botsford Elementary School to become a complete "walking school," three of the elementary schools will now have the same hours. However, the students at Grandview Elementary School will have a slightly different schedule.

The schedule is: Botsford, grades one through six, 8:50 a.m. to 2:40 p.m. and kindergarten, 8:50 a.m. to 2:35 p.m.; Grandview, grades one through six, 8:25 a.m. to 2:15 p.m., and kindergarten, 8:50 a.m. to 2:35 p.m.; Edgewood and Westbrook, all grades, 8:50 a.m. to 2:35 p.m.; Junior High, all grades, 8:50 a.m. to 2:35 p.m.; and Senior High, all grades, 7:45 a.m. to 3:05 p.m.

OLS School Opening Set

Information regarding Our Lady of Sorrows school opening was announced this week. The grade school will begin next Wednesday, September 8, with an 8:15 Mass. The school day will begin at 9 a.m. and close at 3:30 p.m. Classification of high school students will also be next Wednesday, September 8. Freshmen are to be at the school at 9 a.m.; sophomores, at 10:30 a.m.; juniors, at 1 p.m.; and seniors, at 2 p.m. Students will receive schedules and book lists at that time. They will also be given their bus passes. High school classes will begin on Thursday, September 9, at the regular morning hour, with dismissal at 12 noon. Form day class sessions will begin on Friday, September 10.

THE CLARENCEVILLE School District reports an enrollment this year of 3,633, only about 120 more than last year's count of 3,723. There are 2,501 enrolled in the system's four elementary schools, 546 in the Junior High School, and 786 in the Senior High School. There will be 164 teachers on the job in the Clarenceville Schools this year. The Our Lady of Sorrows school system expects a registration of 1,180, slightly over last year's 1,200. Approximately 800 students will be in the elementary grades and 380 in the Junior High School. See ENROLLMENT Page 6A



ONE OF THE LARGEST Elm trees in the City, doomed with the Dutch Elm disease, got cut down last week on Oakland Avenue just east of Farmington Road. The tree in the "cherry picker" bucket above had the tricky job of prunning off the tree limbs which dwarfed roof tops and utility poles on Oakland. The job took several hours. A large elm marked for removal in front of the Phillip B. Day residence two blocks further west on Oakland took two days to cut down and was the biggest job to date for tree cutters.

Multiples Rezoned, K'wood Corp. RC-3

The Township Planning Commission's hopes to get all multiple property placed in one of the three new RC classifications will have to wait at least another month as a result of action at last Thursday's regular meeting. The six months long project was held up because of the illness of the attorney for Gross Pointe Nursing Home which plans to convert the Children's Hospital property into a nursing home complex. Joseph Mash, administrator for the nursing home, said he did not understand the implications of

Suspicion of Arson In Twp. Auto Fire

Fire completely demolished a car owned by Budet L. Hansen of 7464 Heatherheath Lane in Birmingham which was parked overnight at Jim's Shell Service, 12 Mile and Orchard Lake Road in Farmington Township. A 1958 Chevrolet convertible, Hansen had dropped the car off to have the brakes checked. Police are investigating the possibility of arson.



A NEW STREET SWEEPER is now in use by the City of Farmington Department of Public Works. Unless you're an early riser, you may never get to see the machine in action since it begins its rounds of City streets at about 6 a.m. and is usually back in the DPW building by 8 or 9 a.m. Joe DeVriendt is the operator.

Twp. Plan Comm. Taking Longer Look on Multiples

ONE OF THE tabled apartment proposals was that of Chatham Hill's Manor, 368 units proposed in a building along Grand River about a quarter of a mile east of Halstead on the south side of Grand River. The proponents, G. H. Pastor and Sons, also presented plans for a proposed subdivision, Chatham Hills, to be built under the Planned Unit Development provision south of the apartment development. A ravine and creek would separate the two developments. Although the two-part plan was submitted separately, the commission felt that they had to be considered together and were not satisfied that the 28.3 acres proposed for apartments could not be used for single family residences. The requests were tabled and the proponents were asked to come in to the next regular meeting in September and show why the proposed multiple use would be unsuitable for single family homes. A PLAN for a multiple development on seven acres, west of Drake Road, south of 12 Mile Road and north of 1686, was rejected because it was based on a density of 14 units per acre. Earlier in the meeting the commission had set a density of 10 units per acre for the site. The request was adjourned until the next meeting. A third request for multiple zoning was unanimously denied. Louis Rose and Associates asked for rezoning from RA-1, residential, to RC-2, multiple, of some 20 acres located east of Drake Road, north of the western extension of Oakland Avenue, and south of a 54' foot deep commercial zone on Grand River. THE DEVELOPMENT, to have been called Kirkstone Downs, would have had 64 one-bedroom units, 116 two-bedroom units, and 30 town houses, for a total of 210 units. Denying the rezoning, commission members pointed out that the Duke development, Independence Green, is a mile to the west and the Smoker apartments will be located at 9 Mile and GHI roads which is a mile south and a half mile east. Other multiple developments already approved by the Township are the Kendallwood Corporation apartments at 12 Mile Road, west of Drake Road; Hunter Ridge, south of 14 Mile Road and west of Orchard Lake Road; the Walter apartments, north of Botsford General Hospital; and Botsford Apartments between Botsford Inn and the hospital.

73% of Area Grads Leave For College

A record 73 percent of Farmington area 1965 graduates will be going away or commuting to colleges, universities, and other places of higher learning this month. Of the 322 graduates from the four high schools in the area, 578 young men and women will go on to better their educations. North Farmington has the highest percentage of college students. Of the 300 graduates, 254 will go on to school—a record 85 percent. Our Lady of Sorrows has 78 percent, 60 out of 76, of its graduates going ahead with their educations. Farmington High is next with 701 of its 330 graduates, 61 percent, heading for higher learning. Clarenceville had the lowest percentage, but nevertheless an admirable 54 percent, which is 63 out of 146 graduates who will be seeking higher education.

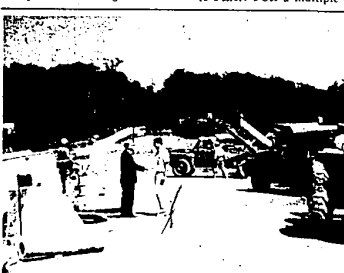
Paper to be Out Thursday

Because of the Labor Day holiday on Monday of next week, Sept. 6, The Enterprise will be distributed on Thursday instead of Wednesday. The Enterprise offices will be closed from noon Saturday, Sept. 4, until 8 a.m. Tuesday, Sept. 7, in observance of the national holiday. The deadline for display advertising to be placed in the total distribution section of the Enterprise will remain the same—Saturday at noon. Display advertising for the regular subscription section of the paper will be accepted until noon on Wednesday, however. Classified advertising will be accepted until 10 a.m. on Wednesday. It is requested that as much copy as possible be submitted prior to the holiday weekend. News copy for the September 9 edition will be accepted until 5 p.m. on Tuesday. A guarantee can be given that it will be published in the current week's edition.

Truck Strikes Boy On Bicycle in Twp.

An eight-year-old Farmington Township boy was injured when a truck knocked him off his bicycle while he was riding on the sidewalk north of Eight Mile Road, west of Orchard Lake Road in Farmington Township on August 23 at about 3:50 p.m. Taken to Botsford General Hospital with minor injuries was Danny Lee Kennedy, 8, of 21225 Parker Street in Farmington. The driver of the truck, Karl J. Esper, 28, of Livonia, told Township Police he did not see the boy and struck him as he turned into a driveway opposite 21675 Eight Mile Road.

CONSTRUCTION OF SEWERS is now under way in Meadowbrook Subdivision in Farmington Township and is scheduled to be completed this fall. Farmington Township Supervisor Curtis H. Hall is pleased above with construction superintendent Lee Carlesimo of the R. Carlesimo and Sons Construction Co. In viewing the progress on the sewer lines. Water lines are also to be extended into the sub and will be completed at about the same time as the sewers or possibly even sooner.



CONSTRUCTION OF SEWERS is now under way in Meadowbrook Subdivision in Farmington Township and is scheduled to be completed this fall. Farmington Township Supervisor Curtis H. Hall is pleased above with construction superintendent Lee Carlesimo of the R. Carlesimo and Sons Construction Co. In viewing the progress on the sewer lines. Water lines are also to be extended into the sub and will be completed at about the same time as the sewers or possibly even sooner.

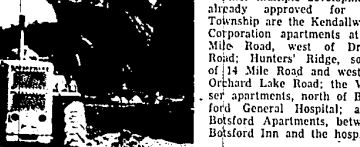
Sign-Up Sept. 15, 16

36 Adult Education Classes Now Proposed

Richard T. Tyler, Director of Adult Education for the Farmington Public Schools, announced this week that registration for the ten-week fall term of Adult Education would open on September 15 and 16 with classes commencing the 1st of the following week. Persons interested in registering for any of the 36 different courses being offered this fall may do so by either going in person to the Farmington High School Adult Education office or by mail. Enrollment is open to all adults regardless of age or previous education. Day school youths, 16 and older, may enroll with the permission of the Director, Mr. Tyler. SEVERAL NEW courses are being offered for the first time in this fall's Adult Education program. Included in the new course offerings are: Buyers Guide for Home, Construction; Silk Screening; Small Boat Handling; Sculpture; with two courses, Yoga and Introduction to Football (both started last year), again scheduled. An estimated 600 persons are expected to register for the fall courses. A total of 618 persons took Adult Education classes in last year's fall term. Total enrollment for all three ten-week terms last year was 1,866. There were a total of 106 different classes offered last year with the biggest response being in recreational courses, such as bridge, dancing, yoga, gym, golf and skiing. Over one-third of last year's total enrollment (640 students) took courses in the recreational field. Over 200 persons took courses in the fine arts area. THE NEW CLASSES and courses again being offered from previous terms are described in detail in a booklet available at the Adult Education office. Copies of this booklet are available at no charge from Mr. Tyler's office. The Buyers Guide for Home Construction course will be offered on Monday evenings with Mr. W. Marynow the instructor. The class will cover not only construction materials and building but also questions on zoning, township and city ordinances and legal descriptions. The course is scheduled from 7:30 to 9:30 p.m. with an entrance fee of \$9. Silk Screening, with Mr. Richard Schilling the instructor, will deal with designing and printing with the silk screen process. The class will meet from 7 p.m. until 9 p.m. on Wednesday evenings at North Farmington High School. The course fee is \$10. THE COURSE in Sculpture is being offered on Wednesday nights from 7 p.m. until 10 p.m. with Miss B. Martin the instructor. Students will have an opportunity to work with a variety of materials. The course fee is \$10. Tools and See ADULT EDUCATION Page 6A

On Wednesday evenings at North Farmington High School. The course fee is \$10. THE COURSE in Sculpture is being offered on Wednesday nights from 7 p.m. until 10 p.m. with Miss B. Martin the instructor. Students will have an opportunity to work with a variety of materials. The course fee is \$10. Tools and See ADULT EDUCATION Page 6A

Deny Zoning For Wrigley Super Mkt. A second plea for rezoning to permit a supermarket, pointed out at the meeting to present the case for the supermarket. He boiled the arguments down to what appeared to be a choice between rezoning at the regular meeting of the Township Planning Commission. James M. Ginn, attorney for Allied Supermarkets, appointed at the meeting to present the case for the supermarket. He boiled the arguments down to what appeared to be a choice between rezoning at the regular meeting of the Township Planning Commission. In his arguments, Ginn quoted the master plan, which was drafted by Vilcek-Lehman, planning consultants, in such a way that it appeared that a shopping center had been recommended for that particular corner. Chuck Lehman was quick to correct the interpretation of the plan and mentioned the counselor not to "twist the words" of the plan. WENDELL BROWN, attorney for Farmington and Frinklin Fairway subdivisions and other individuals, was on hand with arguments against the shopping center. He said he had checked with other communities and found that shopping centers cause an increase in crime, robbery, thievery, and littering; that traffic hazards are increased; and that the need for police and fire protection is increased. A motion to deny the request was approved by all members of the commission except James Moore.



Head-On Auto Crash Injures 3 at Curve A head-on collision on Farmington Road at the curve just north of Five Mile Road in Farmington Township on Thursday afternoon, August 26, injured one of the drivers severely. Taken to Botsford General Hospital in Farmington Township in serious condition was Fred G. Brahm, 59, of 25482 Fairbrook in Southfield. He was driving south on Farmington Road. A passenger in his car, Bernice Brahm, 50, also suffered injuries. Brahm's car was struck by a car driven by John L. Matle, 18, of 34706 Hothenswood in Farmington Township. Matle, who told Township Police a bee stung him causing him to take his eyes off the road, suffered minor injuries. A passenger in his car escaped injury.

Nearly All City Tax Bills Paid on Time

Again this year City Treasurer Kathryn Cotter reported an exceptionally good percentage of City of Farmington tax bills paid prior to the deadline for payment, without penalty. Both city and Oakland Community College billings were made by Mrs. Cotter in July with the deadline date for payment without penalty being Tuesday, August 31. As of noon Tuesday a total of \$281,204.59 had been collected in city taxes against the total billing of \$296,040.13. The total Oakland Community College levy billing was \$29,224.48. Mrs. Cotter expressed confidence that checks dated the final payment without penalty date of August 31 were received in the mail Wednesday plus payments being made direct yet Tuesday afternoon would probably hasten the payment percentage close if not over the 95 per cent mark. The pattern of payment seemed to be very much the same as in previous years, according to Mrs. Cotter, with payments coming in very slow until the last week to ten days prior to the payment deadline without penalty. City and community college tax bills owed by city taxpayers may still be paid at the City Hall on Liberty Street anytime during regular business hours through the balance of this year and until the end of February in 1966 but a four per cent penalty on the amount of the bill will now be added. After the end of February in 1966 it will be necessary for anyone who has still not paid to go directly to the county treasurer's office in Pontiac to make payment on their delinquent bills.

Corner Property Rezoned to Office

The Township Planning Commission, at a public hearing on Tuesday, August 26, rezoned 2.73 acres at the southwest corner of 11 Mile and Middlebelt Roads from RA-1, residential, to RC-2, multiple, as requested by the Township Board. The property is located north of Consumers Power property, across 1 Mile Road from the new MDI office, and adjacent to Middlebelt from a proposed shopping center. There were no comments from the public at the hearing.