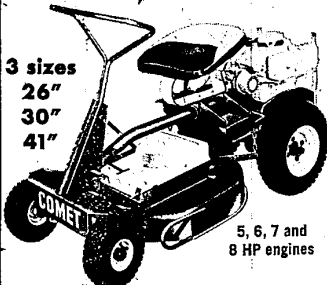


Washburn Home Reflects New England Heritage

By ELIZABETH WISSMAN
Evidence of the New England heritage of Farmington School Board Trustee John M. Washburn III and Mrs. Washburn is found all over the Washburn home in Farmington Meadows

SNAPPER COMET
is a lot more than just a great mower!



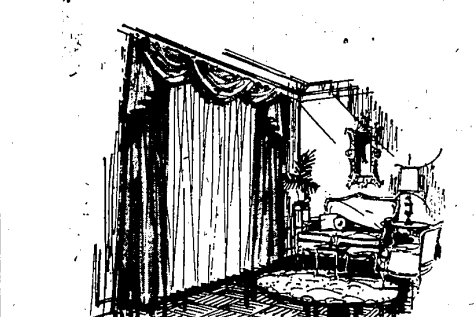
SNAPPER COMET
works for you...year 'round



The Snapper Comet is unexcelled in ease of handling and comfort. It has been proven by years of performance on all kinds of lawns. This fine piece of equipment also helps you with dozens of other yard chores when equipped with suitable implements. Lawn care is a "Snap" with a Snapper!

Try it on YOUR LAWN!
MAY'S THE MOWER SHOP
SERVICE
COMPLETE ENGINE & LAWN
MOWER SALES & SERVICE
30733 W. TEN MILE
FARMINGTON
GR 4-4462
32750 NORTHWESTERN HWY.
FARMINGTON
626-0833

Look to Ray Interiors for that particular window treatment



Are you confused as to just what to do with your windows or do you have just the right treatment already decided upon? In either case, contact Ray Interiors. Our experts will show you beautiful arrangements and advise you about the latest fashion trends. Choose from a fabulous selection of custom drapery fabrics and with our magnificent workmanship, your windows will be exciting.

Call 476-7272 and arrange for that particular window treatment.
Ray Interiors
"Furnishings for Distinctive Homes"
33300 Slocum Drive, Farmington 2 BLKS. SOUTH OF GRAND RIVER
OFF FARMINGTON ROAD.
Phone 476-7272 Mon., Thurs., Fri. 11:00 a.m. - 7:00 p.m.

mark covered bridge in New England.
LYNN WASHBURN, formally Carolyn, was born in Boston, grew up in New Jersey and spent all her summers as a child and young woman in northern Vermont. Her husband was born in Arlington, Mass., just outside Boston.
Although she has lived in the Midwest since her marriage to the trustee 18 years ago, the parlance of a New Englander still speaks Mrs. Washburn's conversation.
She describes her husband as being "without airs and graces," when she discusses the attributes which made him a good trustee.
BECAUSE of his trusteeship, Washburn's wife limits outside activities which would take her away from home and her three children, Christine, 15; David, 13; and Carol, 11.
She puts it, "He is away so many evenings with his work, I feel I should be home."
But the trustee and his wife and children are a closely knit family. The whole clan spends summer evenings watching Da-

F'ton Explorers Set Up State Scout Troop

It would be difficult to say who gains the most from a project Farmington Explorer Post 45 has conducted for over a year local boys or the young men for whom they have set up a Boy Scout troop at Plymouth State Home.
Fifteen young men, ages 14 to 34, are in the troop at the home. All are mentally or physically handicapped, most are blind.
SPOKESMAN for the Farmington boys, Robert Crain, 32220 Marblehead, says it is difficult to maintain a set schedule for troop meetings at the home. Basics of Scouting, such as memorization of the Scout laws, oath and motto, must be rehearsed over and over before it can be accomplished.
The teaching of simple skills, such as tying knots and hammering of nails, must be adjusted to accommodate the limited abilities of the young inmates.
To teach them to tie a square knot, a special board has been made with ropes stapled on it with just two free ends so the home troop members will not become confused. To hammer a nail, they must first be taught the difference between the claw end and the hammer end.
These simple tasks, and

vid play Little League baseball and Mrs. Washburn has gone the Cub Scouts, Brownies, Boy Scout and room mother route in depth.
THESE ACTIVITIES Washburn took no exception to, but it took him some time to adjust to his wife doing the substitute teaching she does occasionally these days.
When the couple was married two months after their graduation from Tufts University, Washburn was adamant against his wife working.
He said, "If I can't support a wife then I have no business getting married."
Mrs. Washburn talked about teaching with Maribus Van-Ameyde, Farmington administrator for school personnel, before she approached her husband about it, convincing Van-Ameyde "not to tell John until I do."
Today, she glows when she talks about her teaching of handicapped children at Eagle and Longacre schools.
"Get me started on that," she enthuses, "and I'll talk your arm off. When the children grow up I want to go into this



TASTY DISH — Mrs. John Washburn III, of Farmington, tests some bread she has just prepared.

THE CORAL REEF
Tropical and Marine Fish
Aquariums and Supplies
22834 Mooney - Across from Farmington Plaza
BREED YOUR OWN TROPICAL FISH
ALL LISTINGS ARE PER PAIR
Angels \$15, Rosy Berbs \$3, Ports \$8, Blue Gourami \$3, Fire Mouths \$8, Lyretail Red Wag Swords \$10, Sail Fin Red Velvet Swords \$8.
● 10 Gal. Aquarium Set up \$12.95
● Sea Horses \$1.95
MICROFILM BANKARD
OPEN MON. - FRI. 10 a.m. - 8 p.m., SAT. 10 a.m. - 6 p.m., SUNDAY 12 NOON - 4 p.m. PHONE 477-7695

clothes, she is perceptive in recognizing true old-fashioned virtue in the people with whom she comes in contact.
She feels that today's youth are the hope of the future and comments, "The world is in such a turmoil today. Our hope is in the youth of the world. And I don't like to see them maligned."

Cranston Paint Shop
Our Wallpaper Selection is Outstanding
GR 4-2674
● Boulah Bensmiller Cranston
31185 W. Ten Mile Road • Farmington

CREST BEAUTY SALON
Curtains are in for '68
Hair Cut and Set
Tuesday and Wed., only. \$5.00
Imported from Italy — Swim WIG Cap
Ass't Colors — Special for July — 10.95
We service, sell and style Wigs & Wiglets
Make Appointments Early —
27434 W. 8 Mile Road, 1 Block W. of Inkster
474-9777 — PHONE — GR 6-0500
Hours: Tues., Wed., Sat., 9-5; Thurs., Fri., 9-7
Open Evenings

turn **5%** into **6%**
with new Michigan Bank Guaranteed Certificates!
The annual interest rate of 5% on Michigan Bank Guaranteed Certificates actually becomes an average annual interest rate of 6% when held for 86 months. In fact, these Guaranteed Certificates guarantee your money grows 42% larger when you hold them to maturity.
Come in today to Michigan Bank and arrange to get guaranteed growth with a 5% Guaranteed Certificate.
REDEMPTION VALUE OF CERTIFICATE BASED ON PURCHASE PRICE OF \$5000
Time held Redemption value
12 months \$5,258.30
36 months 5,809.03
60 months 6,418.88
86 months 7,154.33
MICHIGAN BANK
NATIONAL ASSOCIATION
MEMBER FEDERAL DEPOSIT INSURANCE CORPORATION
Your Farmington Michigan Bank location is Orchard Lake Rd. at 94 Rd., Rd. or at any Michigan Bank office.

3 To Attend CMU Event
Three Farmington residents will take part in pre-registration and orientation activities at Central Michigan University July 2-3.
The three are Carolyn Benedict, 2301 Maple; Norman Decourcy, 32770 Briarcrest; and Frances Diechler, 33194 Maplenut.
FRED SAMRA
32300 Grand River Farmington 476-1890
STATE FARM FIRE AND CASUALTY COMPANY HOME OFFICE: Bloomington, Illinois P-6529