

Area man keeps Lions' stats

Days of the 'faithful 20,000' recalled

By DAVE RAY



JIM HUDDLESTON

Southfield P&R basketball scores

Following are the scores of the games in the Southfield Parks and Recreation basketball programs: Men's A League—New York Life 85, Aristocrats 60; Seamon Patrick 55, Xenox 46; Michigan Bell 78, Levey 67; Men's B League—Steak 'N Ale 56, Eaton 49; Providence 48, South Oakland Boardman 37; Engineers 58, Burroughs 33.

Badgers 16; Wolverines 29; Buckeyes 21; Titans 22; Gophers 12; Spartans 33; Wildcats 22; Grades 5 and 6—Celtics 19, Rockets 8; Knicks 29; Suns 11; Royals 14, Bulls 9; Bullets 16, Hawks 10; Pistons 41; Bucks 7; Lakers 15, 76ers 9.

Girls' League, Grades 7-8—Falcons 9, Bengals 8; Hurons 26, Redskins 4; Rockets 18, Flashers 15; Grades 5 and 6—Jets 15, Raiders 2; Mavericks 14, Mustangs 8.

Boys' League, Grades 7-8—Chipewas 23, Broncos 4; Warriors 37.

"The Vikings have had a pretty easy schedule. The Lions might be up for this game," Jim Huddleston said. "They (the Lions) don't have anything to lose. They just might upset Minnesota today."

Huddleston was right. The Detroit Lions upset the Central Division champion Minnesota Vikings, 17-10, one of the Lions' few victories over the perennial division titlists in the last eight seasons.

And if Huddleston, a Birmingham resident, was lucky in his prediction, there was still an element of expertise in his commentary. For the last 27 seasons, the local man has been a member of the Lions' statistical crew. What started out as a three-man crew to keep track of individual and team figures in the days of the "faithful 20,000" (when the Lions played at the University of Detroit Stadium) and, later, in the then Briggs Stadium in Detroit, has grown to a 10-person operation that still plays the "numbers" game while providing a running play-by-play description of the contest.

HUDDLESTON, AN ASSOCIATE dean at the Detroit College of Law, noted that league officials "add a little" to his duties every year. One example of the expanded responsibilities is a list of all players who enter the game, even if it is only to hold for extra-point attempts or as a member of the special teams. The list is then used to determine a player's eligibility under the National Football League's pension program.

As official scorer for three seasons, Huddleston is responsible for providing the play-by-play description after each quarter, along with team and individual player statistics at halftime and after the game. A scoring summary also is included.

If that seems like a lot of work, especially since the play-by-play reports are intended primarily for members of the working press, it was the addition of the running description that led to Huddleston's position with the Lions.

Three fellows originally were taking care of statistics in the days of the "faithful 20,000," and it was pretty simple then," Huddleston said. "When Nick Kerbarby (former Detroit Lions public relations man and general man-

ager) decided to add the play-by-play, that's when I started with the Lions."

The three "new" statistics-crew members were recommended by University of Detroit athletic officials, and in the 27 years that followed, Huddleston and his colleagues have missed only five games. The Birmingham man "had to go to a Saturday wedding or something like that" for his only absence and that includes a two-year stint when he commuted from Cleveland for every Lions' home game.

"ODDLY ENOUGH, I liked the old days when men played both ways," Huddleston said. "Bullet Bill Dudley (who led the NFL in rushing twice while with the Pittsburgh Steelers before joining the Lions in 1947-48) did it all. He kicked, passed, ran and played defense too. He did everything."

The official scorer recalls that the Bobby Layne-led Lions of the 1950s, who won three league championships, were "colorful and very exciting," but Huddleston quickly points out that Detroit "deliberately or not, has not been a 'razzle-dazzle team' since the Layne era."

"The Lions are known as a tough team," he adds, "and they've been coached by competent tacticians."

After the Lions' last championship in 1957, the Baltimore Colts emerged as Detroit's biggest opponent. Huddleston said: "The Colts won the NFL title the two years after the last Lion

crowd and those wide-open games were unpredictable. You never knew what would happen." The stat-crew chief said.

"And the Thanksgiving and Green Bay games always seemed to bring out the best too."

The new Pontiac Stadium makes the statistics crew's job easier.

The press box here is the finest facility of its kind in the league, and I think we came from the worst facility (Tiger Stadium). In Detroit, we were in the press box which is behind home plate of the baseball field which means that sometimes we were trying to tell what was going on 130-140 yards away.

"Here (Pontiac Stadium) we're right on the sidelines in the third row of the upper level press box, with the television and radio broadcasters in the lower level."

Huddleston started his academic law career in 1962 as a full-time instructor at the University of Detroit. He accepted a teaching position at Cleveland State University in the late 1960s—when he commuted to Detroit for the Lions' home games—before returning to Detroit in 1970 as associate dean of DCL, responsible for academic affairs.

\$50 OFF WITH THIS AD (PRESENT AFTER QUOTATION)

• ADDITIONS
• PORCHES
• DOORWAYS
• REC ROOMS
• REPAIRS

PROFESSOR AVAILABLE
PERSONAL SERVICE

BURCHFIELD BUILDERS
TEN YEARS IN BUSINESS
537-4020 422-7042

Mr. tile

We install **SOLARIAN** Free Estimate Fast Service All Work Guaranteed

Fancy Patterned **IMMOR TILE \$9.95**

IMPORTED FANCY **CERAMIC Wall and Floor Tile 49¢**

VINYL ASBESTOS LARGE SIZE 12x12 \$6.99

Top tankers in OU meet

The Oakland County swimming and diving championships will be Saturday (Jan. 17) in Oakland University's pool.

About 175 swimmers from 23 high schools in the metropolitan area are entered in the meet, according to meet director Mark Holdridge. Diving preliminaries begin at 9 a.m. The finals begin at 1 p.m. Tickets at \$1 for adults and 75 cents for students, may be bought at the door.

Last year, Birmingham Groves won the meet, and Rochester Adams finished second.

TELEVISION SERVICE SPECIAL ONLY \$3

We will pick up your television set, bring it to our shop and have it checked by our TV experts. You will then be notified by telephone of the cost of repair. If you decide not to have it repaired we will return it to your home. All for only \$3.

FREE ESTIMATES

STAR RATE TV

28915 JOY RD WESTLAND PHONE 525-5450

DRY-WALL CLINIC

JAN. 17th 10 A.M. to 3 P.M. ONLY

EVER WONDER HOW TO INSTALL THIS MOST ECONOMICAL WALL PANEL?

- HOW TO PAINT?
- HOW TO WALL PAPER?

JOIN US SAT. JAN. 17th. FACTORY EXPERTS WILL ANSWER ALL YOUR QUESTIONS.

SPECIAL CLINIC PRICES!

REG. SALE 3/4" 4'x8' 2" 1.79

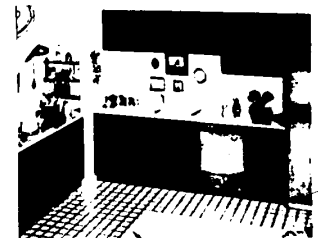
1/2" 4'x7' 2" 1.69

1/2" 4'x8" 2" 1.89

REG. - 1"

4'x7' 1.59 EA.

HOMECREST KITCHEN CABINETS



A NEW EXPRESSION OF ELEGANCE... CRISP EFFICIENCY COMBINED WITH OLD ENGLISH CHARM...

CARRIAGE OAK PATRICIAN PECAN

SAVE UP TO **40% OFF**

SPECIAL LOW PRICES ON ALL ...

Lumber & Building Supplies

POPULAR 4'x8' BUILDING PANELS

PLYWOOD	GOOD-1-SIDE	CD-X	PARTICLE BOARD
1/4" 4'x8'	6.59	—	—
3/8" 4'x8'	9.59	5.69	3.79
1/2" 4'x8'	10.95	6.29	4.19
5/8" 4'x8'	11.95	8.19	4.29
3/4" 4'x8'	13.75	9.89	5.89

ASK ABOUT OUR QUANTITY PRICES

3/4" 4'x8' AB (GOOD 2 SIDES) 17.75 - EXT. GLUE

3/4" 4'x8' Plugged and Touch Sanded -- Underlayment -- 10.45

3/4" 4'x8' Tongue and Grooved - Plugged - Touch Sanded 10.45

DIMENSION LUMBER

ASSOCIATION GRADE STAMPED CONSTRUCTION AND STANDARD LUMBER

	2x4	2x6	2x8	2x10	2x12	4x4
1" x 8'	.77	1.20	1.84	2.13	3.24	2.00
2" x 8'	.82	—	—	—	—	—
6" x 8'	1.80	1.80	2.10	2.84	4.24	2.90
10" x 8'	1.40	2.80	2.80	3.63	6.20	3.83
12" x 8'	1.83	2.75	4.11	6.20	6.48	4.80
14" x 8'	2.14	3.21	4.81	6.51	7.42	5.41
16" x 8'	2.32	3.83	6.82	7.18	8.40	6.93

ALSO LONGER LENGTHS AVAILABLE UP TO 24'

FIBERGLAS INSULATION

KRAFT FACED

3 1/2" x 15' - **5.99** ROLL

6" x 15' - **6.89** ROLL

UNFACED - 3 1/2" x 15' - 11.00

6" x 15' - 6.00

HARDBOARD

STD. 4x8 2.99 4x8 4.79

TEMP. 4x8 3.99 4x8 6.39

2"x4" - 8' PRE-CUT **69¢ EA.**

ECONOMY

ZONOLITE INSULATION

POURING TYPE

3 CU. FT. BAG

2.59 BAG

REG. 2.99 BAG

LAUAN

1/4" - 4'x8'

Plywood Underlayment

Solid **4.99** EA.

2" x 4" - 8'

#2 SO. PINE **89¢ EA.**

FURRING

1"x3" **39¢ EA.**

8'

PRE-HUNG LAUAN DOORS

with Jambos/stops

2'6"x6'8" **18.95** SET

LOW AS

DOORS

Utility Low As **1.98** EA.

WALL PANELS



OVER 50 TYPES AND STYLES TO CHOOSE FROM - OVER 50,000 PANELS IN REDFORD'S STOCK

MT. PECAN

4'x7'

269 EA.

EASY TO CLEAN

VINYL FACED

4'x8' **299** EA.

HIGHLAND BIRCH

4'x7' - **5.39**

4'x8' - **5.99**

EVANS PANELS

4'x7' LITE OR DARK

4.99 EA.

NEW NORDIC

PANELING 1/4" - 4'x7 1/2'

4.49 EA.

PLAIN WHITE

CEILING TILE 12"x12"

11 1/2¢ EA.

ARMSTRONG CEILINGS

12"x12" CEILING TILE

GOOD GRENOBLE **18¢**

BETTER CHAPERONE **23¢**

BEST TEXTURED **33¢**

2'x4" - LAY-IN PANELS

GOOD GRENOBLE **1.39**

BETTER CHAPERONE **1.59**

BEST TEXTURED **1.79**

REDFORD CASHWAY LUMBER

SPRINKLER	2x4	2x6	2x8	2x10	2x12	4x4
1" x 8'	.77	1.20	1.84	2.13	3.24	2.00
2" x 8'	.82	—	—	—	—	—
6" x 8'	1.80	1.80	2.10	2.84	4.24	2.90
10" x 8'	1.40	2.80	2.80	3.63	6.20	3.83
12" x 8'	1.83	2.75	4.11	6.20	6.48	4.80
14" x 8'	2.14	3.21	4.81	6.51	7.42	5.41
16" x 8'	2.32	3.83	6.82	7.18	8.40	6.93

ERB LUMBER

2'x4" - LAY-IN PANELS

GOOD GRENOBLE **18¢**

BETTER CHAPERONE **23¢**

BEST TEXTURED **33¢**