

GIRLS, TEENS, YOUNG MISSES & WOMEN

## Discover the World of Chubby Fashions

### Free Yourself from the Half-Size Run Around

Who says you have to be a skinny little thing to find what's new and fun in fashion! Here it is, ready to orbit your work and play circuit. Quick-change separates designed with a young outlook that projects your own. Intermix them for countless alternatives, confident that each arrangement is a can't miss combination of fresh ideas that work together beautifully.



Fashions for Girls, Teens, Young Misses & Women  
 0 1/2 - 24 1/2  
 32 - 46  
 38 - 52

Hours: Daily 10-6, Thurs. 10-9, Sat. 10-5

**SYS UNLIMITED**  
 "THE ONLY STORE IN MICHIGAN EXCLUSIVELY CHUBBY"

28927 Southfield Rd. (just south of 12 Mile)  
 Latrup Village Phone 424-8767

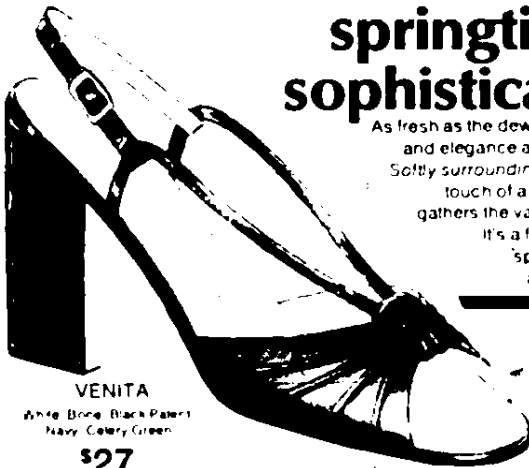


Anne Klein's Mark of the Lion sweatsuit certainly isn't acceptable for lunch at the Vineyards, but it couldn't be better for a quick jog around Quarton Lake.

# joyce

## Our enchanting springtime sophisticate!

As fresh as the dew, poised with grace and elegance atop a slimmer heel. Softly surrounding your foot with the touch of a spaghetti strap that gathers the vamp into tiny pleats. It's a feminine favorite for 'spring time, tastefully accented by Joyce!



VENITA  
 White Bone Black Patent  
 Navy Celery Green

\$27

# ROBY'S SHOES

"FOR THE HARD TO FIT FOOT"

We carry Women's shoes 4 1/2 - 12 AAA-EE width

TEL-TWELVE MALL Telegraph at 12 Mile  
 352-0442 MOST CHARGE CARDS HONORED

Southwick



### Our Airy Basketweave Suit

Thousands of Tiny Windows

This suit provides unique comfort for the busy executive during the warm summer season. It retains its crisp cool appearance, even for the traveling businessman.

Tailored of a blend of lightweight wool and polyester in exceptionally porous and airy basketweave.

Cut in our own soft, natural shoulder model in shades of sand, fresh medium blue and dark blue. \$165.

Charge accounts welcome

Store Hours: Mon. thru Sat. 9:30 a.m. to 5:30 p.m.



Van <sup>INC</sup> Boven

DETROIT  
 243 W Congress

WO 2-1605  
 Established 1921

ANN ARBOR  
 326 So. State