

Bikes will roll for diabetes

Ray Lane, sports director at WJBK-TV 2, is statewide chairman of the American Diabetes Association's fourth annual Bike-A-Thon Weekend, set for May 14-15. This year the event is co-sponsored by WDRQ-FM 93 and Arby's Restaurants.

As chairman, Lane has video-taped announcements to be used as public service announcements on TV stations across the state. To draw the attention of the sports-minded, his name and photo were used on the posters and entry forms for the event, and on 25 local billboards, donated by Campbell Sign Company.

He will also make appearances at routes, over the weekend.

There are 25 routes planned across the state: 11 of them locally. In this area, bikers will take to Hines Drive on May 14, from 9 p.m. to 4 p.m. The 20-mile route has checkpoints at Haggerty and Edward Hines Drive, Nankin Mills, on Edward Hines east of Joy Road, Par Knoll, on Edward Hines west of Telegraph, Merriman Hollow, and Edward Hines west of Merriman.

Other routes are designated in Allen Park, Dearborn, Grosse Pointe, North-east and Northwest Detroit, Maybury State Park, Royal Oak, St. Clair Shores, Warren and Waterford Township.

TO PARTICIPATE, riders need a sponsor sheet entry form, available at all Arby's Restaurants, all AAA offices, some schools and most bike shops.

Then sponsors who will pledge a monetary amount for each mile the participant rides need to be obtained.

Riders may start at any of the designated checkpoints for their route and continue to ride as long as they wish, until one hour before the event ends. Each rider who completes at least one full lap will receive an Arby's food coupon.

A statewide grand prize will be awarded to the individual who returns the most money by the June 17 deadline. Other prizes will be awarded from each route, at various levels and age groups.

Each rider who returns his pledge money by the deadline will receive a

free T-shirt iron-on decal, and the first 2,000 riders will receive a Bike-A-Thon jacket patch.

VOLUNTEERS are still needed to man each of the checkpoints and mark the riders' sponsor sheet, verifying that they have passed that point. When a rider is finished, he checks out at one of the established points and a certificate is presented, stating the total miles ridden.

The rider takes this certificate to show his sponsors when collecting his pledges.

Proceeds from the event will go towards the association's programs of diabetes research, education of patients, health professionals and the public, detection and Camp Midsouth, a medically supervised summer camp for children with diabetes.

The first benefit sponsor, led by the American Diabetes Association-Michigan Affiliate's new auxiliary grossed more than \$8,000 for the association's programs.

Mrs. Lee Iacocca, chairwoman of the auxiliary, hosted a benefit cocktail party in the Summit restaurant atop the new Detroit Plaza hotel where the conversation centered on the ice sculpture throughout the room.

The sculptures were fashioned of the association's logo, the triangle, prepared by the Summit's executive chef, Karl Ederly. The three sides of

the triangle represent the three major goals of the association: education, research and detection.

A staff of eight paid personnel now administer the activities of 22 individual units throughout the state. Headquarters is in the Mt. Carmel Hospital complex on Outer Drive in Detroit.

Its crew of volunteers services about 250,000 known diabetics; a number that keeps steadily rising.

The auxiliary was formed by Mrs. Iacocca strictly as a fund-raising arm. It has taken on the job of continuously coming up with new and innovative ideas to meet an ever growing annual budget.

Persons who have an interest in working with the auxiliary, or would like more information on its plans for the year, are invited to call Candi Kitchen, at the association office, 312-5333.

The association provides public education through its speakers bureau and professional education through a program called "The Visiting Professor."

Local units throughout the state, provide diabetics and their families with information, fellowship programs and group projects.

County schedules diabetes classes

A fourth series of diabetes classes offered by the Oakland County Health Department will begin Tuesday, May 10, from 1:30-3:30 p.m.

The free classes, held weekly for five weeks, will be offered at the South Oakland Health Center, 27725 Greenfield at Eleven and One-Half Mile, Southfield. Registration may be accomplished by calling the health department education office at 557-1400. The classes are taught by public

health nurses and a nutritionist. Topics include the nature of the disease, dietary management and medications and suggestions for coping with everyday problems.

Those attending must have diabetes or have a family member who has the disease and be under the care of a doctor. A written statement from the doctor is required for attending and can be presented at the first class. Classes are limited to 20 persons.

AUTO SHOW CARPET SALE!

From the people who brought you the Detroit Auto Show carpet... we now offer you the same excellent values from auto shows and conventions around the country. It is sold on an "as is basis". Shag and plush carpet will be available in a wide range of colors. Also new carpet and roll balances available.

Come early for the best selection. Pad and installation available.

Master Charge and BankAmericard Accepted.

9-5 Monday-Thursday
9-9 Friday
8-12 Saturday

DONALD E. MC NABB COMPANY
22150 W. 8 Mile Rd. (W. of Lahser)



Mary Iacocca (left) and her husband, Lee, flank their guests, Tom and Diane Schenith, at the recent benefit to raise funds for diabetes research. Mrs. Iacocca is president of the new auxiliary of the American Diabetes Association-Michigan Affiliate.

ANTIQUES, COLLECTIBLES
&
REPRODUCTIONS
20% off
the Curator

303 EAST FOURTEEN MILE RD. 588-8990

echo park school

Pre-school through First Grade
Mother-Toddler Program

Visitors Welcome

Fall Applications Now Being Accepted

646-5590

4275 Echo Park Road
Bloomfield Hills

LAZARE'S FURS LTD.

SAVE NOW... on REPAIRS
and RESTYLING of your Furs.

SEE US... for a FREE ESTIMATE!

All work done on our premises, by our
highly-competent staff.

Serving Windsor and area since 1925

LAZARE'S FURS LTD.

493 Ouellette Ave.

FREE PARKING

Friday eves. 'til 9 p.m.

1-(519)-253-2418

MODERN DINING

Crystal Clear Glass, Table, 48" Round or Octagonal, (42" round size optional). Chair Frames Are Triple-Plated Chrome. With Genuine Sheppard Casters. Choice of Covers in Nylons or Vinyls.

5 PIECE SET SALE
REG. \$649
SALE \$498

Over 80 Dinets on Display
Largest Selection of Butcher
Block Tables in Michigan

by Chromcraft

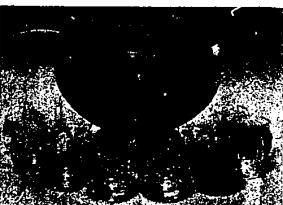
Millers Dinette Furniture Co.

22630 Michigan (Between Southfield & Telegraph) Dearborn
10-2-8300 Open Mon., Thurs., Fri. 'til 9



Corning Ware "Grab It"

Corning Ware "Grab It" can be used so many ways. Prepare food in them... cook... serve... refrigerate or freeze... a must for every kitchen. Of course, they're dishwasher-safe! Choose for gifts or yourself today. Brand new!
15 oz. Bowls, Set of 2... \$7.99



15-Piece Punch Bowl Set

Beautiful cut glass 15-pc. Punch Bowl Set from L.E. Smith Glass Co. sparkles at wedding, showers and other special occasions. How nice to give as a gift! Set contains 12 cups, 1 ladle, Punch Bowl and stand.
15-pc. Set... \$57.00



Lauffer "Magnum" Stainless Flatware Sale!

Lauffer's sleek, contemporary style "Magnum" Stainless Flatware is made of fine quality, forged 18-8 stainless steel. Enjoy the 33% Savings!

5-pc. Place Setting
Reg. \$29.50...
Sale \$19.95



Gorham Pewter Flatware Sale!

Save up to 33% on Gorham fine Pewter with satin-finished pewter handles and stainless steel bowls, lines and blades.

4-pc. Place Setting
Reg. \$32...
Sale \$25

11-pc. Service for 8
Reg. \$356...
Sale \$266

Mahogany Chest
Reg. \$50... Sale \$32.50

Come See Our Tulips!



Open Mon., Thurs. & Fri. 10-9 • 544-7370

TELEGRAPH RD. (at Long Lake Rd.) BLOOMFIELD HILLS

FOR A LIMITED TIME ONLY

GORHAM FULL-LEAD CRYSTAL 20% OFF SALE



Chantilly

Enrich your life with the elegance of Gorham Full-Lead Crystal and SAVE 20% ON OPEN STOCK PRICES!



LaScala

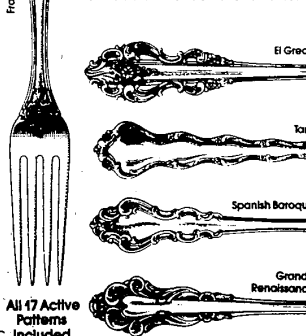
de Medici

Sale STERLING FLATWARE

50% OFF ALL "TRADE-INS"
40% OFF ALL PLACE PIECES
30% OFF SERVING PIECES

REED & BARTON STERLING

Here's an unprecedented sterling flatware sale by the master silversmiths at Reed & Barton. Now for a limited time only, all famous Reed & Barton sterling flatware is available at as much as 50% off the already low sale price. Bring in a piece of your old unwanted sterling (regardless of brand, age, or monogramming) and we'll give you an additional 50% off the sale price of a comparable piece of new Reed & Barton sterling - in the pattern of your choice. You can also save 40% off regular prices on the purchase of all place setting pieces and 30% off all serving pieces. Come in and see our wide selection. Classic Group and Children's Silver not included.



All 17 Active Patterns Included