

'Vanities' stars share Orchard Lake house

The faces are familiar, and even if you haven't seen them in "Vanities" at Detroit's Fisher Theater, you may recognize Barbara Anderson and Joyce Bouffant from their many TV appearances.

But what in the world were they doing in Orchard Lake, lounging in wing chairs in the living room of a summer home? It was a warm, lazy afternoon, and the view led to the terrace and expanse of tranquil blue lake.

Here they were looking like comfortable suburban wives—almost—casually dressed to enjoy the day and just back from playing tennis together in Franklin.

Ever since "Vanities" opened at the Fisher, Ms. Anderson and Ms. Bouffant had been dreaming of renting a house for the length of the stay. They spent two weeks at the St. Regis and had to be escorted to and from the theater, Ms. Anderson said.

THEY WERE UNHAPPY but discouraged about finding an appropriate house until Ms. Bouffant's sister Tykie (Mrs. Pierson) Smith of Bloomfield Hills put them in touch with her neighbor.

That's how the two women found themselves an oasis of leisure—in the neighbor's summer home—until June 4 when "Vanities" closed at the Fisher.

"We come back after the show, put on a fire and relax," Ms. Anderson said.

People are surprised when the co-stars say it's a convenient drive to the theater, Ms. Bouffant said. "It only takes about a half hour. We're used to half-hour drives in California."

MS. ANDERSON has an easy charm. Her sun-streaked blonde hair was pulled off her face, and she was dressed in a red-and-white striped T-shirt and jeans.

Her features are fresh and striking. She started on the first four years of "Vanities" with Raymond Burr (the series ran eight years) and has

done lots of episodic TV and movies for television.

Ms. Bouffant's blonde, curly hair was tucked under a red bandana and she wore a T-shirt and shorts. Her most engaging quality is her voice that crackles. You've got to call her perky—even though she's the mother of a 17-year-old son and two other children, ages 11 and 6.

For seven years, Ms. Bouffant portrayed Murray's wife on "The Mary Tyler Moore Show," which just ended. She did the "Bill Cosby Show," also now in re-runs. Other regular TV ap-

pearances are on "Big John, Little John," a Saturday morning children's show, and "The Match Game."

During the stay in Orchard Lake, Ms. Bouffant's husband, director-producer/writer William Asher has come to visit, the children have come with their big brother, and her mother visited last week. Ms. Anderson's husband, stockbroker Donald Burnett, is expected to come next week.

IN "VANITIES," Ms. Anderson portrays Mary, whom she describes as "a fun-loving, boy-crazy girl who grows up and is a little wild."

Ms. Bouffant is Joanne, whom she says is "a Goody Two Shoes. She lives in a fantasy world. Her only desire in life is to get married and have children. Her fantasy came true—in a bottle."

"Joanne and I fence through the whole play," Ms. Anderson said.

"Vanities" is about three women friends. Garrie Snodgrass portrays Kathy, who is super-organized and the

most popular. The show takes them through high school, college and 10 years later when they meet in New York for a tea party.

"I always play straight, strong women," Ms. Anderson said. "This one is sex-crazed."

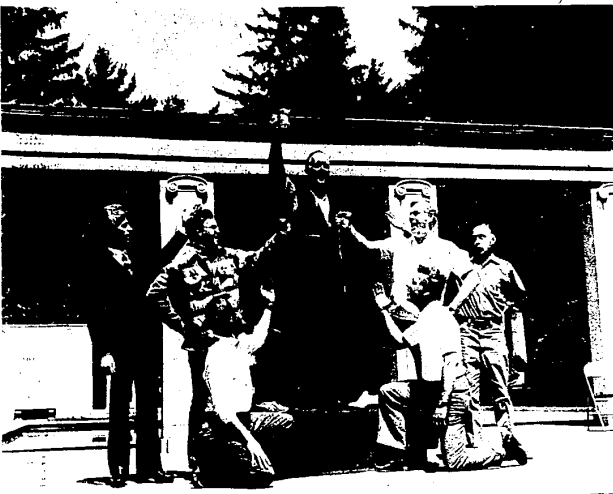
"I usually play wife and mother roles," said Ms. Bouffant. Yes, her characters are always sweet. "I last year in 'Bus Stop' last year in St. Louis. She was a sweet hooker."

MS. ANDERSON has not performed in the theater for at least six years.



Getting Around

By ETHEL SIMMONS



Cranbrook's open air theater is resounding with Cole Porter's music as St. Dunstan's readies "Kiss Me Kate." In this scene, Petrucchio (Fred Wuellner) rehearses "I've Come to Wive It Wealthily in Padua" with chorus members (back row, from left) Ty Secord, Steve Bryant, Ron Mitchell and Al Rosie; (front row from left) Lew Towler and Lou Singer.

St. D's staging musical

Cranbrook's outdoor Greek Theatre will be the scene of St. Dunstan Theatre Guild's spring musical, Cole Porter's "Kiss Me Kate." Show dates are June 35, and 9-11 with a 9 p.m. curtain.

Considered by many as Cole Porter's finest work, "Kiss Me Kate" features such tunes as "Always True to You in My Fashion," "Wunderbar," "Brush Up Your Shakespeare," "Were Thine That Special Face," "Too Tarn Hot," "So in Love" and many more.

Jervis B. "Jerry" McMechan celebrates his 30th year of acting, producing and directing for St. Dunstan's, by directing this show. Barbara Gowans is musical director, with choreography by Cindy Merry. On the production staff are Co-Producers Kelly Gustafsson, Jack Waters and Bill Martin and Assistant Director Bud Matych.

Others: Set design, Dave Trevilian; set construction, Tom and Sue Anthony; lights, Francis Loud; make-up, Nancy Mills and Gertrude Thomson.

properties. Mary Sue Meyer, and stage manager, Edgar Guest III. Mary Anne Wilson and Fred Wuellner as Kate and Petrucchio lead a 40-person singing and dancing cast. Other principal roles are played by Sue O'Brien, Dr. Don Schore, Franklin Donagan, Kirk Carr, Larry Finn, Bill Studabaker, Phil Savage, Judy Cochill, Lew Towler and George Randolph.

Tickets are being handled by Fran Hayes and Lucy Burke. Call 644-8277 for ticket information and reservations.

Birmingham cast amusing in 'Seven Year Itch'

By BARBARA MICHALS

It's one thing to dream of having an affair, another to actually confront the reality. This disparity forms the core of "The Seven Year Itch," the George Axelrod comedy currently offered by the very talented Birmingham Village Players.

The amusing production concludes this weekend with performances on Friday and Saturday evenings at the Village Playhouse.

Happily married for seven years, Richard Sherman is now approaching 40 and curious to know if he still has sufficient appeal to the opposite sex despite his receding hairline and ad-

vancing waistline. In the past he's let a few opportunities for an affair pass by, but now Fate presents him with an overwhelming temptation.

While his wife and daughter have left their New York apartment for a summer in the mountains, an attractive young girl has sublet the apartment upstairs. A chance meeting leads to a very brief affair. Richard is left overwhelmed with guilt and more appreciative of his wife.

Review

MUCH OF THE play's humor derives from the acting out of Richard's fantasies. He daydreams of elegantly seducing the girl on the piano bench. When he tries it in real life, they both crash awkwardly to the floor. "Never

seduce a girl on a piano bench," pedantically advises a psychiatrist acquaintance. "Always leave yourself a larger area to work in."

Richard envisions his wife shooting him when she learns of his indiscretion. In his daydreams he also imagines his wife being seduced by an old family friend, Tom MacKenzie. When Tom actually shows up at Richard's apartment, he berates him as if the seduction had been real.

Arnie Bernstein is very convincing as Richard and imparts warmth and sympathy to the character. His very expressive face greatly enhances his acting.

Lisa Jacobson does a fine job as the girl. She is sweet and vulnerable, but Miss Jacobson and director Rosemary Schneider have wisely avoided the drizzly blonde stereotype played by Marilyn Monroe in the movie version of "The Seven Year Itch."

How to send news items

News releases, photographs or other information can be mailed to Ethel Simmons, entertainment editor at 125 Bowers, Birmingham 48012, or delivered to any office of the Observer & Eccentric.

The entertainment pages include news and features on theater, movies, night life, restaurants, travel, music, pop, rock, jazz and country, special attractions, TV and radio.

DINING AND ENTERTAINMENT GUIDE

ON THE TOWN

FANNY'S

ENJOY our scrumptious SUNDAY BUFFET DINNER served noon to 8 p.m. \$4.55 per person

Holiday Inn of Bloomfield
1801 S. Telegraph, Bloomfield Hills 334-2444
American Express Cards Accepted

CHINA GATE RESTAURANT, INC.
4343 ORCHARD LAKE ROAD Pine Lake Mall 851-5540
Excellent Cantonese & American Lunches & Dinners
Your Hosts: Kin Ming Chin — Dixon Chin — Ben Chin
Open Mon-Thurs 11:30 p.m., Fri & Sat 10:30 a.m., Sun 12:15 p.m.

"If you like Greek Town, you'll love"

VASSO

GREEK VILLAGE
Lunch & Dinner served from 11:30 a.m. - 1:00 p.m. Sun. 2:00 p.m. - 11:00 p.m.

Featuring International Boatswain Soloist YANNIS ANGELOU
with Singer DIANE GREYS and Ethne Dancing by SULTANA
BANQUET FACILITIES AVAILABLE
519-4111
An adventure in Greek food & Entertainment
4636 WOODWARD ROYAL OAK, MICH. 1 LOCKS OF 14 MILE

MONJIN LAU

• CHINESE FOOD
• EXOTIC SPIRITS
• CARRY OUTS
• BANQUETS

Full Food Service Sun-Thurs 11:00 A.M. Fri & Sat 11:00 A.M.

PHONE 689-2332
1515 Maple Rd. At Stephenson Hwy. • Opposite Troy Hilton

CHICKEN OF TROY

ENJOY SUNDAY CHICKEN DINNER AT THE TROY HILTON INN

If you enjoy a traditional family style Chicken Dinner, it's as close to home as the Troy Hilton Inn. Every Sunday from 3 p.m. on, feast on the Heymarket's version of your favorite Sunday meal, with all the trimmings. There's no need to travel for a meal this delicious...it's yours, every Sunday at the Troy Hilton Inn.

\$5.50
Per Person, Children under 12, half-price

TROY HILTON INN (313) 583-9000
MAPLE AND STEPHENSON HWY. - TROY, MICHIGAN 48064

IT'S TEMPTING

Dinner at Eden Glen... more than a meal. Experience one of our specialty dishes for the sheer entertainment of eating.

A rare Beef Wellington, and a salad bar

that's not just a garden variety display of greens. And after dinner, stay for a little night music and dancing to the Joe Grande trio. And an Irish coffee nightcap perhaps?

eden glen
BE TEMPTED

2085 West Big Beaver Road/Between Crooks and Coolidge/649-1880
American Express, other major credit cards honored.

Treat Yourself To Our Sunday.

and we'll treat you to our Sunday best. Your choice of entree: Ribs of Beef, our Fresh Catch of the Day or Breast of Chicken. Served with Souffle's homemade soup and your own invention from our salad bar. And, you guessed it, all for \$5.75. Dishes from 4 to 9 p.m. on the Couch and Four in Souffle's Northland Inn.

Couch & Four

STROUPERS NORTHLAND INN
2100 Northland Drive, 349-1700

TOWN CENTER FAMILY RESTAURANT
PRUDENTIAL TOWER BUILDING

• BREAKFAST • LUNCH • DINNER
COMPLETE MENU INCLUDING

• BROILED FISH
• BROILED STEAKS & CHOPS
• SHISH KEBOB • ETC.
COMPLETE GREEK SPECIALTIES
• HAKISAKA • SPINACH PIE
• GREEK SALADS ETC.

OPEN DAILY 7 A.M. - 10 P.M.
SUNDAY 11 A.M. - 8:30 P.M.

GROUND LEVEL-NEXT TO THEATRE
DRIVE IN TO DROP OFF PARKING
ENTER FROM THEATRE
LITTLE JOHN THEATRE
255-3959