

## Moving to Drake house

# Orchestra plays in the black

By JUDITH BERNE

The West Bloomfield Symphony Orchestra (WBSO) will soon begin its third year of operation on an upbeat note.

Out-going WBSO board president Gordon Muir says the orchestra ended its first two music-making years "in the black."

The orchestra board has also okayed establishment of a permanent office at the Drake House Community Center, 645 Maple, beginning July 1. Both announcements were made at a Wednesday board meeting.

"WE'RE GOING TO end up not losing one dime after two years of operation," Muir said excitedly, following the meeting.

He said that when contributions from patrons, sponsors, ticket sales,

advertising revenues and "outright donations" are totaled, "We will have a slightly plus figure."

According to Muir, orchestra board members didn't know until the meeting that they had met their annual \$2,000 budget.

"I feel extremely happy for the community," Muir said. "The orchestra now has no place to go but up."

BETTY SUE DUPREE was elected president of the orchestra. Ms. Dupree, township clerk, is currently vacationing in Europe.

Other officers for the coming year are: Louis Basso, first vice-president; David Packard, second vice-president; Milton Abramson, treasurer; Mel Ryceus, corresponding secretary; and Jo Ann Von Steeg, recording secretary.

Muir, who with his wife were primarily responsible for establishing the orchestra, said, "I'm extremely confident of those people who are going to be taking over."

Both Muirs will remain on the orchestra board.

THE DECISION to re-locate at Drake House, headquarters for West Bloomfield Parks and Recreation, came after weeks of negotiations.

Two months ago the orchestra board requested free office space and personnel to man it from the parks commission.

Parks trustees okayed the space, on the second floor of Drake House, but declined to supply manpower unless a federal grant was obtained which would pay for an additional person.

Two weeks ago that request was denied.

Mrs. Muir, who has been running

the orchestra office in her home, Wednesday night offered to operate the new office, which will be open 9 a.m. to noon week days.

Members of the orchestra's Women's Association will help her, Mrs. Muir said.

PARKS DIRECTOR Michael Teichman attended the orchestra board session and said he was pleased with the decision to join him at Drake House.

"I think it's going to be real good," Teichman said. "It will be good for the township. Everybody will know they (the WBSO) have an established place."

"Maybe some day in the future, the two of us or someone else we associate with, can move into a new building together."

## Bike path starts battle

(Continued from Page 3A)

stand the complexities of establishing priorities.

"Every city, through its elected representative, has to make a decision as to what the priorities are of a community," he said. "I don't think the bike path committee's charge is that critical that they had to have a specific deadline."

The students have been working with Gaynor and other committee members, including chairman Floyd Cairns and members Earl Oppenheimer and Ralph Magid. The students blame conflicting interests on the part of the members for the lack of a report. The committee has failed to consider funding, Ms. VanDooorne charges, although she believes federal funding might be available.

And she definitely wants bike paths and routes included in the 10-year master plan of the city.

"New highways, built with federal funds, have to have bike trails," says Ms. VanDooorne, explaining that the bike trail adjacent to the I-275 freeway lacks exit and entrance ramps.

"Bikers have to find their way through the communities," she said. The two students want the plan to widen Orchard Lake Rd. to include

provisions for bike paths to hook up with bike paths alongside Orchard Lake Rd. in West Bloomfield.

Even bike route signs are an expensive proposition, Connolly says, explaining that a green and white bike route sign costs between \$30-40. One mile of asphalt for a bike trail costs about \$30,000, he added.

But the students believe that safety for bikers and a desire to bike, rather than drive, to Farmington facilities, is worth the price.

"If you can get in on the ground floor, 10 years from now we can avoid people crying out that there's no room left for bike trails," she said.

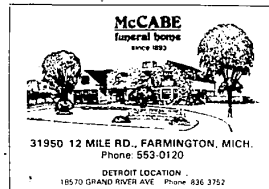
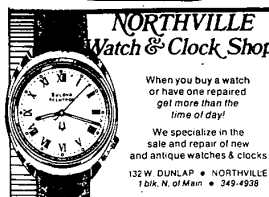
## Film festival is cancelled

The Fourth annual Orchard Ridge Film Festival, originally scheduled for 8 p.m. June 17, has been cancelled.

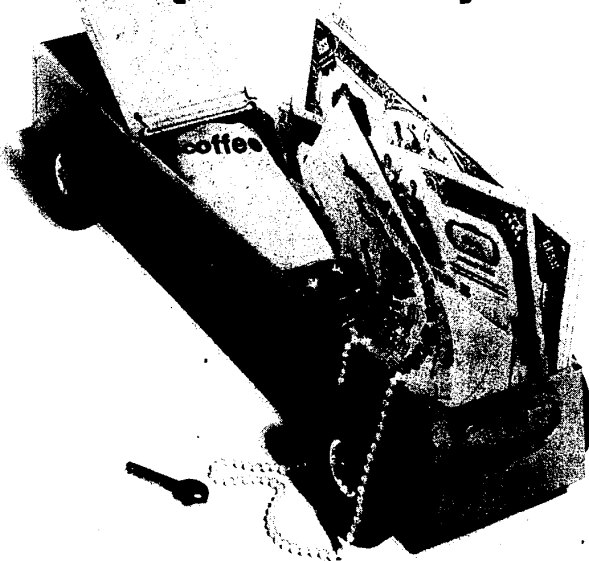
Films submitted to the contest will be judged and prizes awarded. The films and prizes will be mailed during the week of June 20.

Thursday, June 16, 1977

(F) 9A



## Park your valuables here. [from 75¢ a month].



If you're even thinking about a safe place to keep those Army discharge papers, Aunt Sarah's heirloom brooch, those not-so-fireproof stocks and bonds, think about parking them in a safety deposit box at National Bank of Southfield.

They come in all sizes. The cost is as low as seventy-five cents a month. And the peace of mind is beautiful. Most branches have plenty of "parking" spaces. Drive right in.

### HERE'S THE BOX SCORE:

Branch Location	Number of Boxes
29201 Telegraph Road, at 12 Mile Road (354-8330)	500
17000 West 8 Mile Road, Southfield Office Plaza (354-7521)	41
15555 Northland Drive, Northland Plaza (354-2000)	159
20000 West 12 Mile Road, at Evergreen Road (354-7530)	Sorry, lot filled
27100 Lahar Road, at 11 Mile Road (354-2040)	5 small, 27 extra-large
6070 West Maple Road, at Farmington Road (354-7920)	152

If you live or work around Southfield, you'll find more at our bank.



**FATHER'S DAY SPECIAL**  
**VESTED SUMMER SUITS**  
Regularly \$140  
**NOW \$109**  
**GOLF SLACKS**  
**20% OFF**  
*Select Groups Only*  
**A PLACE FOR HIM**  
Orchard Mall • Orchard Lake at Maple Rd.  
851-7772 • Daily 10-9 • Sun. 12-5

My dad told my mom to shop at Call It Love this Father's Day.  
There's no Tennis Shop like it.

**call it love**  
ORCHARD MALL  
West Bloomfield 626-7400  
The most complete tennis store for everyone

**MEET ONE OF OUR BEST**

**ADOLPH H. GRULKE, FIC**  
28236 E. Greenmeadow Circle  
Farmington Hills

Once a year we at Aid Association for Lutherans take a moment to recognize some of our best people. You've just met one of them.

Adolph was the leading representative in 1976 in the Zack Pokley Agency, Troy. We're proud of him. And we want to tell you about it.

What's it take to be one of the best at AAL? Well, it takes training and experience so Lutheran families get the best coverage possible. It takes genuine interest in the fraternal and benevolent activities of AAL local branches. And it takes a special kind of dedication to AAL's concern for others.

We think that describes Adolph pretty well.

Aid Association for Lutherans • Appleton, Wisconsin  
Provisional Insurance  
\*The AAL, owned and operated by Rev. U.S. Rev. Dr.

# Oriental Rugs 16th Century Designer Series Collection

Just arrived in a special shipment... fine, high quality rugs in sizes and patterns ideally suited as wall hangings. Patterns of 16th century hunting scenes, enchanted forests and flowers have been beautifully hand-knotted in shades of rust, beige, green and blue. They're the perfect touch to your home. Prices start at \$395.00.

**tadross & zahlonite**

16th Century Designer Series Collection