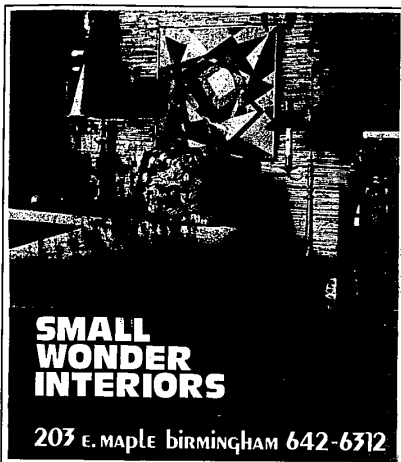


# Basic beauty becomes today's happy medium



**SMALL  
WONDER  
INTERIORS**

203 E. MAPLE BIRMINGHAM 642-6312

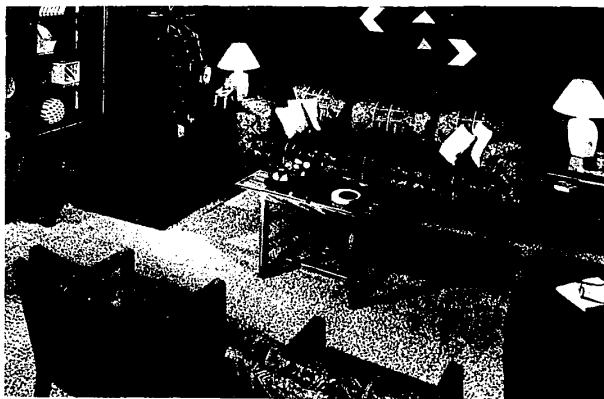
**H**ail the happy medium! A movement is afoot—called "Basic is Beautiful."

In design philosophy, it falls midway between "too little is too little" and "too much is too much." Enough, it maintains, is enough. And it applies as well to traditional and transitional upholstered pieces and inlaid chinoiserie as to the most contemporary designs in plastics.

Followers of the fast-growing discipline are diverse—ex-lovers of wall-to-wall art work, former devotees of plant-choked rooms reminiscent of the Upper Amazon and, conversely, those late metaphysical types to whom any more than two pieces of furniture in a room meant clutter.

"BIBs" one and all, their new banner is moderation—rooms that are easy on the eye, furniture designs that are versatile and easy to live with. For them, seating units must be comfortably shaped or upholstered with a clean-cut, tailored profile.

Tables should expand or shrink as the need arises. Extra pieces—ottomans and side chairs—move freely to accommodate conversation. Thus an overall air prevails



The clean basic lines of the living room are highlighted by velvety brown walls whose warm color is repeated in the hand blocked print of the

that is neither suffocating nor Spartan. In other words, it should say "welcome."

Interior designer Foster Hamilton interprets "BIB" to a tee in a living room of chic sophistication where what is there is "just enough." First, to catch the eye, is the dramatic play of dark brown walls against pale shag carpet.

Graduated moldings are highlighted against the deep ground to frame the conversation group and the wall sculpture visually emphasizes the height and width of the room.

Furnishings are arranged with an eye to comfort and space—just the right amount of each for balance and proportion.

The only pattern—an exotic print with terra cotta pre-

sectional and occasional chairs. The white accents of the lamps and toss pillows add the bouncy light touches to the room.

dominating—is found on the softly rounded form of the sectional sofa and repeated on a pair of fabric-swathed chairs.

An additional armless section and ottoman serve as accents to the pattern in solid terra cotta linen. Tables are serviceable and decorative but never overwhelming. The oblong tea table offers pull-out leaves for extra surface space—a sleek, classic design in glass and wood to match the etagere and lamp tables.

As "Basic is Beautiful" in the living room, so it is in the kitchen, as demonstrated by interior designer Ron Budny, ASID.

Here, the trick was to take a limited space and, rather than make it cramped for four, make it intimate yet airy for two. Intimacy was achieved with a

sweep of terra cotta walls and matching tile floor as a surrounding for the circular bistro table and chairs.

Designed in wipe-it-clean plastic, they are molded for comfort. Their pale caramel coloring blends with the natural pine buffet shelf and folding wood screen framing the window.

Leveler blinds soften the light. A collection of rustic baskets, those most basic and versatile of all accessories, cluster on the floor and adorn the wall.

Their colors neutral, their textures varied, they create a background for any cuisine, any time of day or night.

It's the basics that count in any motif. Apply them with taste and restraint, and the result is bound to be beautiful.

Set your home apart from the ordinary with a beautiful hardwood floor by "Bruce".

Wood has a natural beauty no other floor material can match. Whether you plan a new home or have remodeling in mind, Bruce has the right floor for you.

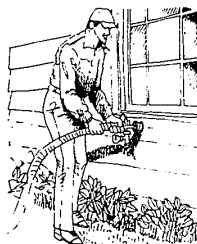
**CARPET • VINYL • WOOD  
CUSTOM AREA RUGS**

We offer expert installation. Fully Guaranteed.



315 HAMILTON ROW • BIRM. • 647-6150

## Would You Like To Save Money On Your Home Heating And Cooling Costs?



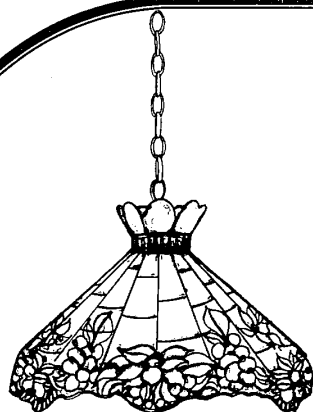
**Insulate Now With  
Foamed-In-Place Insulation  
And Save Up To 30%!!**

- Saves heating, cooling costs
- Stops drafts and cold walls
- Reduces noise intrusion
- Fast, easy application
- U.L. Labeled

**New, or Old Homes • Commercial**

See Us For Custom Building, Too!  
Room Additions • Family Rooms • Fireplaces

**JK Home Improvement Co.**  
Free Estimates 689-5080  
LICENSED & INSURED BUILDER TROY, MICHIGAN



For centuries, leaded art glass has been deeply appreciated by lovers of fine art the world over. Our designers are waiting to coordinate with you hand crafting of stained glass windows and lampshades. For the do-it-yourselfer, we also stock a full line of colored glass, supplies and how-to information.

Tue. & Thur. 10AM-9PM  
Wed. & Fri. 10AM-6PM  
Saturday 10AM-4PM  
Closed Sun. & Mon.

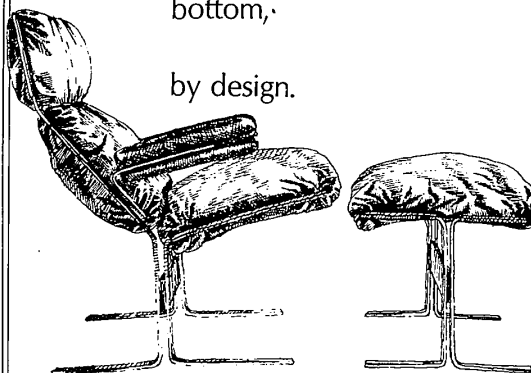


766 WOODWARD AVENUE • PONTIAC, MICHIGAN 48053 • (313) 333-1444

**CANTERBURY ART GLASS**

Ronald Topper Interiors  
might pamper your  
bottom.

by design.



And when your bottom is pampered, you feel pampered all over.

Visit our Studio where our staff of professional designers will assist you in coordinating our fine contemporary and traditional furnishings from all over the world to suit your individual personality.

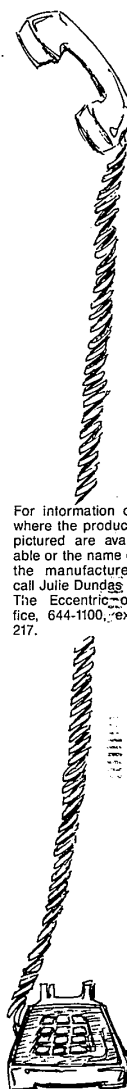
To find something different in furniture, draperies, wallpaper, lighting, carpeting, or unusual gift items and accessories, look to RONALD TOPPER INTERIORS. You'll feel pampered from the moment you walk into the Studio.



**RONALD TOPPER INTERIORS**

555 South Woodward Avenue • Birmingham, Michigan 48011  
313/646-7000

STUDIO Hours: Mon.-Fri.—9:30 a.m. to 5:30 p.m.



For information on where the products pictured are available or the name of the manufacturer, call Julie Dundas at The Eccentric office, 644-1100, ext. 217.