

## In regional festival

# 'Alice!' to compete for honors

The Student Enterprise Theatre from Oakland University will perform "Alice," an original musical, as one of six entries chosen for the American College Theatre Festival regional competition to be held Jan. 5-7 at Wright State University, Dayton, Ohio.

In addition, Beth Taylor, an OU student from Warren, has been selected as one of the 10 finalists for the prestigious Irene Ryan Award. Some 400 students were originally entered in this acting competition. Ms. Taylor portrays the White Queen in "Alice." Her final audition for the Ryan Award

will be held in Dayton on Jan. 5.

The Barn Theatre cast will present "Alice" at 9 p.m. on Jan. 7, the last of the groups to perform in the regional competition. The final placement has been awarded traditionally to the play given the best chance of advancing to the finals to be held this spring in the Kennedy Center for the Performing Arts in Washington, D.C. Ten plays will be chosen for the finals.

Regional competitors were selected after the plays were viewed and judged by a committee of experts in each region. Other Michigan schools

competing in Dayton are Wayne State University and the University of Detroit.

"Alice" has been certified by the judges as an original play. It was prepared for the stage and given original music by two Oakland University students, Paul Marvin of Pontiac and William McCarthy of Bay City. The work is based on Lewis Carroll's popular "Alice Through the Looking Glass." The all-student cast will rehearse Monday-Saturday before leaving for Dayton. For additional information call 377-2246.



Donald Annis as Uncle Charlie and Elizabeth Mar as Alice go over a scene for musical "Alice."

## OU offers mime study

Use of the body in mime will be the subject of two new nondegree courses to be instructed by The Mime Ensemble of Oakland University for the Division of Continuing Education beginning Jan. 23.

Circus techniques, including juggling, acrobatics and balance skills, will be conducted 10 a.m.-12:30 p.m. Saturdays. Illusion, mime isolations (separating operation of parts of the body to create an illusion), and mime scenario

improvisation will be practiced in the course Mime: Illusion and Improvisation, to be held 12:30-3 p.m. Saturdays. Introduction to Mime and Pantomime, for those interested in a brief experience in all phases of mime will be conducted by members of The Mime Ensemble 10 a.m.-12:30 p.m. Saturdays. All courses are 10 weeks. For additional information and to register, call the Continuing Education office, 377-3120.

## ON THE TOWN

### Guess who's coming to our NEW YEAR'S EVE PARTY?



# LORIO!

- ★ Make it a "new" New Year's at the newly decorated Main Event Restaurant
- ★ Dance and dine to the sensational sounds of "Lorio!"
- ★ Enjoy a Champagne dinner. A delightful dinner complete with a bottle of champagne per couple
- ★ Free favors to set the mood



#### MENU

New York Strip Steak or Red Snapper  
 Relish tray, spinach salad, roll and butter  
 Creme de Menthe Parfait beverage  
 \$60 per couple (includes tax and gratuity)  
 Cash bar

Tables by reservation only - call 858-7888  
 North entrance Pontiac Silverdome  
 Free Parking

## the main event restaurant

## ALBAN'S

Bottle & Basket Restaurant  
 188 N. Hunter  
 Birmingham  
 646-6553

### Gourmet Deluxe Buffet Trays

- Corn Beef
- Roast Beef
- Ham
- Pepperbeef
- Turkey
- Southern Fried Chicken



- Swiss Cheese Potato Salad
- Cole Slaw
- and a variety of our other salads garnished with olives and pickles

Bread and mustard are included with trays.  
 \$3.75 per person  
 Meat tray only same as above EXCLUDING salads.  
 \$3.25 per person

### Alban's Regular Tray

- Your choice of 3 meats Your choice of 2 salads
- Corn Beef
  - Bar-B-Q-Beef
  - Ham
  - Pepperbeef
  - All Beef Salami
  - Potato Salad
  - Cole Slaw
  - Mixed Bean
  - Cel Bean
  - Swiss Cheese

Garnished with olives and pickles—Bread and mustard also included  
**"TOP QUALITY MEATS ONLY" \$2.95 per person**

Another Specialty Tray of Alban's  
 Sandwiches of your choice set on a tray—garnished with pickles and olives and a jar of mustard and potato chips—\$2.70 per person

### Complete Hot Meal Service

HOT AND COLD HORS D'OEUVRES Also Available

### SUBURBAN DETROIT THEATRES INC.

Charles Bronson in  
**"TELEFON" (R)**  
 Charles Durning  
**"CHOIRBOYS" (R)**  
 John Travolta  
**"SATURDAY NIGHT FEVER" (R)**  
 Richard Pryor in  
**"WHICH WAY IS UP?" (R)**  
 Late Show — Friday & Saturday, New Year's Eve

ABBEY 1 • 2 • 3 • 4  
 588-0881

No. 1 Best-Seller on Screen.  
**"CHOIRBOYS" (R)**  
 Matinees Daily through Mon., Jan. 2nd  
 M & F Matinees 1 show, 1:00 p.m. \$1.50  
 Sat. & Sun. — \$1.25 until 3 p.m.  
 Late Shows Friday & Sat. — Dec. 30 & 31

FAIRLANE  
 LOT 1-7200

John Travolta in  
**"SATURDAY NIGHT FEVER" (R)**  
 Matinees Daily - 1:00 p.m.  
 all seats \$1.50  
 Richard Pryor in  
**"WHICH WAY IS UP?" (R)**  
 French Academy Award Winner:  
 Best Picture 1977...  
**"MR. KLEIN" (PG)**  
 Matinees Daily thru Jan 2  
 all seats \$1.25 thru 3 p.m.

MAPLE 1 • 2 • 3  
 855-3090

70 mm  
 Dolby Stereo Sound  
**"STAR WARS" (PG)**  
 Exclusive Engagement  
 Shirley McLain  
**"THE TURNING POINT" (PG)**  
 Matinees Daily through Jan 2nd

NORTHLAND 1 & 2  
 859-3360

Gene Wilder as  
**"THE WORLD'S GREATEST LOVER" (PG)**  
 Matinees Daily through Jan. 2nd

Charles Bronson in  
**"TELEFON" (R)**

OLD ORCHARD 1 & 2  
 553-2210

Charles Durning in  
**"CHOIRBOYS" (R)**  
 Late Holiday Show, Fri. & Sat.  
 Matinees: 1 show, 1:00 p.m. Fri. & Mon., Jan. 2nd

Richard Pryor in  
**"WHICH WAY IS UP?" (R)**  
 Late Holiday Show, Fri. & Sat.  
 Matinees: 1 show, 1:00 p.m. Fri. & Mon., Jan. 2nd

FERRACE 1 & 2  
 937-1717

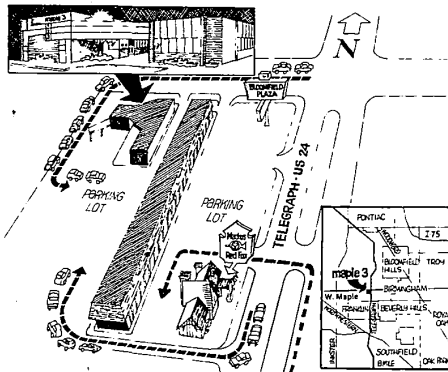
John Travolta in  
**"SATURDAY NIGHT FEVER" (R)**  
 Vanessa Redgrave Jane Fonda  
**"JULIA" (PG)**

TOWNE 1 & 2  
 966-8700

## It's the Season to Get Acquainted with MAPLE 3 Theatres!

If you haven't already discovered the Maple, this festive season would be a good time to get acquainted with the area's new entertainment hot spot — where just about any time, one of its three auditoriums is offering just the right movie for your mood of the moment — first-run, top-notch, and right-on for the knowledgeable film fan. Look over the current lineup for tonight's evening out — and take note of a few of the big ones coming!

### WHERE THE MAPLE IS:



### WHERE THE ACTION IS:

MAPLE 1.  
**JOHN TRAVOLTA in "SATURDAY NIGHT FEVER" ...Catch it**  
 (R) Matinees Daily This Week Thru Jan. 2nd

MAPLE 2.  
**RICHARD PRYOR "WHICH WAY IS UP?"**  
 (R) LONELLE MCKEE - MARGARET AVERY  
 Matinees Daily This Week Thru Jan. 2nd

MAPLE 3.  
**JOSEPH LOSEY'S "MR. KLEIN" ALAIN DELON JEANNE MOREAU**  
 (PG) Matinees Daily This Week Thru Jan. 2nd

Coming Attractions to Watch for:  
 Isabelle Huppert in Claude Goretta's "THE LACEMAKER"  
 "A PURE PERFECT MOVIE EXPERIENCE" — VOGUE MAGAZINE  
 Claude Lelouch's "CAT AND THE MOUSE"  
 Harold Robbins' "THE BETSY"  
 Jean-Charles Tachella's "BLUE COUNTRY"  
 Matinees Daily This Week Thru Jan. 2nd