



New Home Living

Offered By Local Area Builders



**THE BUILDERS
REPRESENTED
ON THIS PAGE
CAN OFFER THE
FINEST IN NEW
HOME LIVING.
CONTACT YOUR
LOCAL BUILDER
TODAY**



OLD VILLAGE of... Chatham Hills

IN BEAUTIFUL FARMINGTON

- EXISTING 22 ACRE PARK
- ROLLING TERRAIN
- EACH HOME SITE DIFFERENT
- 90' AND UP HOME SITES
- OUR MODELS OR YOUR PLANS
- WOOD WINDOWS
- FULL BASEMENT SO SLAB
- ESTABLISHED NEIGHBORHOOD
- RANCH AND COLONIALS
- IN OLD FARMINGTON

JOHN M. GOODMAN
BUILDING CO.

Phone 476-2050

MODELS OPEN

Daily 1-8 (CLOSED THURS)

From \$72,000

to \$86,000



Grand Opening



HAWTHORN SECTION II

in beautiful
ROCHESTER

Hawthorn's first section of fine homes has been sold out and the Grand Opening for Section II is now underway. 35 Home sites have already been sold since the 1st of September in Rochester's newest and finest community.

**CHOICE BUILDING
SITES AVAILABLE
FOR SELECTION NOW!**

THOMPSON-BROWN
SALES AGENT

Please Call...

651-3684

MODEL HOURS
11:00 DAILY
SAT. 12-5 SUN. 12-7
(CLOSED THURSDAY)

Luxury Homes from Low \$90's

SILVERBROOK CONDOMINIUMS



7 Unit lot
to share from... from \$45,900

- There are the benefits that are yours when considering Silverbrook Condominiums.
- One & two bedroom condominiums.
- Attached finished garage with private entry.
- Finished family room with fireplace, 1 1/2 baths.
- Vaulted or cathedral ceilings.
- Fully carpeted.
- Private balconies off living & bedrooms.
- Central air conditioning.
- Fully equipped all electric kitchen with cleaning oven & range, dishwasher, disposal, refrigerator.
- All Formica counters.
- Steel, insulated, double front door.
- Underground utilities.
- Ceramic tile in foyer & baths.
- Insulated windows with screens.
- Convenient to shopping.



Model Open:
Daily & Sunday
1-7 pm
Saturday
1-3 pm
(Closed Wednesday)

FOR MORE INFORMATION
SALES OFFICE 565-5222
Offered by Eugene M. Curtis, Broker 357-3100

Whip Inflation NOW

OWN A PIECE OF THE BLOCK...

BRAND NEW HOMES IMMEDIATE OCCUPANCY

1 1/2 Mile West of Farmington Road on 9 Mile Rd



22226 Parklane Rd.
Colonial (2 1/2 Sq Ft) 4 bedrooms, 2 1/2 baths,
dining plus dining room, library, 1st floor laundry,
big basement



22208 Wingate Road
2026 Sq Ft ranch features 3 bedrooms, 2 1/2 baths,
1st floor laundry, family room, fireplace and full
basement

Priced from...
\$79,900

OPEN DAILY
1-5 PM
(Thurs. by Appt.)

CALL TODAY 477-6300

Westdale REALTORS

1800 people to know

Westdale REALTORS

1800 people to know

Westdale REALTORS

1800 people to know

Westdale REALTORS

1800 people to know

Westdale REALTORS

1800 people to know

Westdale REALTORS

1800 people to know

Westdale REALTORS

1800 people to know

Westdale REALTORS

1800 people to know

Westdale REALTORS

1800 people to know

Westdale REALTORS

1800 people to know

Westdale REALTORS

1800 people to know

Westdale REALTORS

1800 people to know

Westdale REALTORS

1800 people to know

Westdale REALTORS

1800 people to know

Westdale REALTORS

Country road, take me home, to that place where I belong



IN WEST BLOOMFIELD... Willow Farm



"Former site of the Detroit Polo Grounds"

- MASTER BEDROOM WITH FIREPLACE
- 4 BEDROOM 2 1/2 BATHS
- WEST BLOOMFIELD SCHOOLS
- PRICED FROM MID \$70'S

EDWARDS & HOWELL
MASTER BUILDERS, INC.
363-4166

LOCATED 1 MILE WEST
OF HELLER AT LOCHAVEN & WILLOW

MODEL HOURS 1-5 DAILY
12-6 SAT & SUN
(CLOSED THURS)

**NOW
IS
THE
BEST
TIME
TO
BUY
THE
NEW
HOME
YOU'RE
LOOK-
ING
FOR.**



Sunstein & Krull master builders

Your best dreams are meant to come true... So make your custom home dream a reality the professional way. The experienced team of Sunstein & Krull offers complete custom residential services including...

- custom design
- professional contracting
- home site analysis
- financing
- interior design consultation
- finest custom tradesmen

Controlled production schedule guaranteed price protection

644-0720

CALL FOR A PERSONAL APPOINTMENT

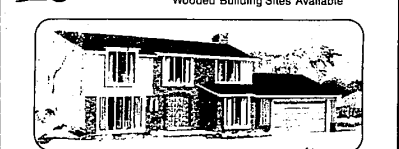
MIKE SUNSTEIN or KEN KRULL

We invite you to check your local realtor, we are recommended. We'll participate with realtors.

BUILDING & LAND TECHNOLOGY, INC.
470 NORTH WOODWARD, BIRMINGHAM, MICHIGAN

ROLLING OAKS of Farmington Hills

NEW... Limited Number of
Wooded Building Sites Available



Be out of the ordinary in this community of distinctively
different and quality built homes.

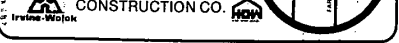
- Wood & Park Lots
- 30 to 60 day occupancy
- Customizing of our plans

Priced from... **\$101,750**

MODEL HOURS:
DAILY & SUN. 1-6 P.M.
(CLOSED THURS.)

MODEL PHONE:
661-1400

IRVINE HOME BUILDERS
& SAM WOLOK
CONSTRUCTION CO.



www.wojak.com

If you
would
like to
see your
ad in the
next
Builder's
Page
Contact
Roy
Meadows
OBSERVER
&
ECCENTRIC
261-8600

Fairway Trails

ANNOUNCING THE GRAND OPENING OF PHASE #2
in Brighton



4 NEW MODEL HOMES 2 RANCHES...2 COLONIALS

Fairway Trails is surrounded by some of Michigan's most
beautiful lakes and park areas... a country atmosphere with
all the conveniences of city water, sewer and paved streets.

- Includes • 3 or 4 bedrooms • 2-car attached garage • Full basement • carpeting • from **\$53,450**

Model: 229-2080 Models open daily 1 to 7, closed Thursday Built by: Burt Construction Co. and Granada Homes, Inc.

Fairway Trails is located on Fairway Trails Drive and Brighton Lake Road. Take exit 147 into Brighton, take Main St. to Third, turn left to Brighton Lake Road, turn right to Fairway Trails Drive and Fairway Trails models.

