

# Grants help fund raisers reach goal

By CORINNE ABATT

The \$150,000 fundraising drive for expansion of the Birmingham Bloomfield Art Association has just rounded the mid-point and is heading down the home stretch.

The volunteers under chairwoman Jennie Jones, have 50 per cent of the goal in their hands and promises of considerably more.

A \$10,000 pledge from General Motors was confirmed this week by Sheri Perrelli, assistant regional manager for public relations. The large pledge encouraged the volunteers, Mrs. Jones said.

Mrs. Jones, past president of the board of trustees of the art association, but a newcomer to leading a fund drive, called the community response "very exciting."

She said her follow-up committee, under chairwoman Mrs. Alex Donaldson, will go into action this week. Twenty volunteers will be calling to encourage individuals to send their pledges in as soon as possible.

VICTOR KLEIN, art association president, said that while he has been making some fundraising calls, his major role has been that of coordinator working with the city.

"And the city has really been cooperative," he added. "They fully support our concept and at the meeting on Feb. 13, we'll try to negotiate a new lease because of the change in boundaries and the additions."

"The city has always been very supportive of our activities because it's good for everybody and helps the whole image of the community."

Klein called the combination of sup-

port from the private sector, the city and businesses "a beautiful combination."

Mrs. Jones said emphasizing that prospects for reaching the goal "look excellent" now that the expansion will begin in April and the new units and parking area should be ready for full term classes.

Ken Neumann of Rossen, Neumann Associates of Southfield is chairman of the architectural committee. Neumann, who is also on the association's board of trustees, said the two modules will be ordered from a firm in Detroit.

"THEY ARE USED units rather than brand new, but that way we will get more building for our dollar," he said.

He explained that before they are delivered, they will be refurbished. Each can be taken apart into five pieces, and that's the way they will be delivered on the truck.

"It's incredible to see how it's done," he said.

Contributions for the drive have come in from individuals, art association members, residents of Birmingham and surrounding communities and a number of students and faculty members.

Trevor Jones, corporate and foundations gifts chairman, said that in addition to the contribution from General Motors, other major benefactors to date include DMI Industries, Rockwell International and TRW.

A list of benefactors will be announced at the conclusion of the campaign.

Because of the scope of its activities, the large number of students and because they come from 57 commu-

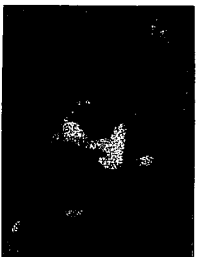
nities in this corner of the state, the association received the status of community art center by the Michigan Council for the Arts.

As such, it is now eligible to apply for and receive grants from the Michigan Council.

ONE OF THESE, the first, was used to hire Leslie Masters as assistant to director Ken Gross. This, too, aided in the proposed expansion because it gives the association added flexibility in program planning.

Those working on the fund drive

with Mrs. Jones include C.A. Hall and Paul Averill, general co-chairmen; Mrs. Warren Eireman, chairwoman of commerce gifts; Mrs. Ray Phillips, chairwoman of retail gifts; Mrs. E. Jan Hartman, chairwoman of benefactors and patrons gifts; Mrs. William F. Squires, chairwoman of membership gifts; Mrs. Arthur Saltzman, chairwoman of student and faculty gifts; Robert Veltor, treasurer; James Atkinson, chairman of communications; and Mrs. C.A. Hall, chairwoman of public relations.



JENNIE JONES



VICTOR KLEIN

BARGAINS  
in your  
hometown  
newspaper

**1975 Chevy.  
18,000 miles.  
Body condition,  
excellent.**

**Tuff-Kote can  
still rustproof it.**

That's because only Tuff-Kote uses a special two-step rustproofing system for both new and used cars with: (1) a unique moisture-displacing penetrant that goes down to the bare metal and stops existing rust right in its tracks; (2) an aluminumized sealant that keeps out moisture and prevents rust from starting again. Call Tuff-Kote now.

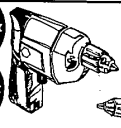
**Our two-step rustproofing is one better.**

31168 W. EIGHT MILE ROAD  
FARMINGTON HILLS 478-6700  
SOUTHFIELD CALL 353-9450 • LIVONIA CALL 522-9280

## PINE CASHWAY

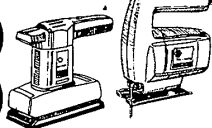
PLANNING A  
PROJECT? WE'RE...

Ready when you are!



**20%  
OFF**

ALL BLACK & DECKER  
ACCESSORIES  
DRILL BITS,  
SAW BLADES, ETC.



**TOOL  
SALE**

**3/8" POWER DRILL**

Comparable depend-  
able and reliable  
Sale Price  
No. 7104 **\$14.88**

**1/2" REVERSING DRILL**

For the serious  
hobbyist or  
the professional  
No. 7230 **\$26.88**

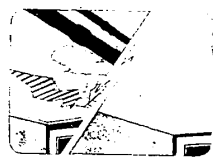
**ORBITAL SANDER**

Flush sands on 3 sides.  
For wood, plastic, metal.  
No. 7404 **\$17.88**

**JIG SAW**

Makes straight, curved  
and bevel cuts.  
Safe and easy.  
No. 7530 **\$19.88**

Ugly ceilings  
disappear with this  
do-it-yourself magic



**Remodel with Fiberglas  
2' x 4' panels**

Unightly cracked plaster, pipes and wires  
vanish with an easy-to-install Owens Corning  
Fiberglas ceiling. Panels are washable  
and make installation so simple anyone can  
do it.

No special tools or skills are needed. No  
furring or framing required. Can be installed  
within two inches of old ceiling. Permits use  
of flush lighting, too. Cuts room noise.  
Available in several decorative textures.

**FIBERGLAS**  
As Low As **\$1.50**  
Per Panel



**SANDED  
PLYWOOD**

1/4" Exterior **\$9.95**

3/8" Exterior **12.95**

1/2" Exterior **15.95**

3/4" Exterior **19.95**



**PARTICLE  
BOARD**

1/4" **\$5.79**

Tough, durable, for cab-  
inets, shelves, underlay.



**PANELBOARD  
PANELS**

4'x8'x1/4"  
SHEETS **\$1.29**

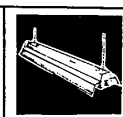
Makes great garage  
liner or underlayment  
for resilient floor  
coverings.



**4'x8'  
PEGBOARD**

1/8" Temp. **\$4.49**

All kinds of hooks and  
holders in stock.



**48-INCH  
FLUORESCENT  
SHOP LITE**

Save \$2.00  
Wide reflector directs light  
downward. Sturdy, safe  
construction. Baked white  
enamel finish.

**\$13.90**



**PRE-HUNG  
DOORS**

**\$25.97**  
FROM

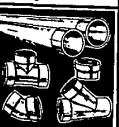
Come ready to fasten in  
place. Hardware  
available.



**MARBLE TOPPED  
VANITIES**

**\$29.95**  
From

Complete with one-  
piece bowl top in  
cultured marble.



**PLASTIC  
PIPE**

**10% off**

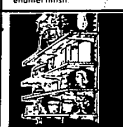
Save on plastic pipe and  
fittings for this event.



**ATTIC  
STAIRWAY**

**\$32.25**  
8'9"

Disappears into ceiling.  
Complete, ready to in-  
stall.



**PRE-FINISHED  
SHELVING**

**ALL SIZES  
AVAILABLE**

We Stock a Complete  
Assortment of Stan-  
dards and Brackets.

## AT LAST A SALE FOR PEOPLE WITH TASTE

During Decorative Interiors Storewide Sale you have the uncommon opportunity to save on furniture, lighting, bedspreads, accessories, and appointments selected by our staff of interior designers. Many other items to choose from including exclusive selections available by special orders.

**DECORATIVE  
INTERIORS**

Extraordinary things for extraordinary people.

Orchard Mall • Orchard Lake Road north of Maple • 851-3200

Thursday & Friday open until 9 p.m.

## PINE CASHWAY

CASHWAY BUILDING MATERIALS & HOME CENTER

MT. CLEMENS	UTICA	WEST SIDE	LINCOLN PARK	YPSILANTI	WATERFORD TWP.	BRIGHTON	SOUTHFIELD
555 GROSSCLOVE South of Oak Ave. 446-2300 Mon.-Thurs. 9-6 Fri. 9-5, Sat. 10-3	4007 VAN DYKE Bet. 21 MI. & 22 MI. 728-7463 Mon.-Thurs. 9-6 Fri. 9-5, Sat. 10-4	12322 TWISTER RD. Bet. Plymouth & Schoolcraft 923-9111 Mon.-Thurs. 9-6 Fri. 9-5, Sat. 10-4	3755 KORT ST. Bet. Schoolcraft & Cadillac 888-3177 Mon.-Thurs. 9-6 Fri. 9-5, Sat. 10-3	655 N. WOODROW Bet. Schoolcraft & Cadillac 444-2400 Mon.-Thurs. 9-6 Fri. 9-5, Sat. 10-3	1274 WATERFORD RD. On Rte. 39 Bet. Airport & W. 10 Mile Rd. 444-2400 Mon.-Thurs. 9-6 Fri. 9-5, Sat. 10-3	515 MAIN ST. 1/2 Mile S. of Telegraph 227-1831 Mon.-Thurs. 9-6 Fri. 9-5, Sat. 10-3	31840 W. 8 MILE 1/2 Mile S. of Telegraph 353-2570 Mon.-Thurs. 9-6 Fri. 9-5, Sat. 10-3

ALL ITEMS CASH & CARRY - GOOD WHILE QUANTITIES LAST THROUGH FEB. 12