



# Farmington Observer Suburban Life

Monday, February 13, 1978

(F11B)

## 'A Doll's House' lures the Salisburys back to the boards

By LORRAINE MCCLISH

A Farmington Hills couple gave up their favorite winter sport to become involved in the Farmington Players' production of "A Doll's House."

"We've always refused to have anything to do with the winter show because of our other minor commitment, skiing," Bill Salisbury said. "But when I was offered the directorship for this play by Ibsen, all of my past resolves melted like the snow under my skis."

Jan and Bill Salisbury's activity with the Players began in 1960 with a couple of one-line walk-on parts in a workshop show.

"We liked everything about the group then, and still do," he added.

Since then, the Salisburys have worked together in a director-actress capacity in "Halfway Up the Tree," "Good-bye Charlie" and "And Miss Reardon Drinks a Little."

This time around Salisbury directs his wife in her role of Nora in the classic that opens Friday to run for three consecutive weekends.

"I THINK IT is a credit to the players that they would even consider taking on such a show," Salisbury said.

Mrs. Salisbury was filled with mixed emotions. She is an avid skier. Christmas was on the way, and the part of Nora has more than 600 speeches.

"I was very reluctant to tie myself down to such a time-consuming part in winter, but the bait was too appealing," she said.

Henrik Ibsen is considered the father of modern theater. When he began writing plays about ordinary people and their everyday problems using simple straight-forward language, modern theater was born.

"Ibsen is a master of the well-constructed play," Salisbury said, "where all of the characters and their actions fit together into a meaningful whole."

Mrs. Salisbury added "I now have new-found respect for Ibsen, whom I'd studied in school. His characters are developed so beautifully and build so naturally through the play."

"He helps you develop your character with each line he writes. He even puts clues in other people's lines which help your development. The more you delve into the play and the characters, the more you learn about them."

SHE ALSO IS fascinated to see how far ahead of his time Ibsen was in his thinking.

"In 'A Doll's House,' Ibsen was writing about women and their basic rights and feelings; way before women even had the right to vote and almost 100 years before the women's liberation movement," she said.

Mrs. Salisbury said people often ask if working together with her husband, as director, poses any problem in their relationship.

"I think I speak for both of us when I say it's more fun sharing the mutual



Bill and Jan Salisbury work together for the fourth time as director and actress in Henrik Ibsen's "A Doll's House," opening Friday in Farmington Players Barn.

interest than doing things separately," she said.

"I respect his opinion and I think he respects mine. Any long discussions that we might have on character or stage movement usually ends up in a draw. We try it both ways to see which works best. Bill is a good director and it's fun working with him."

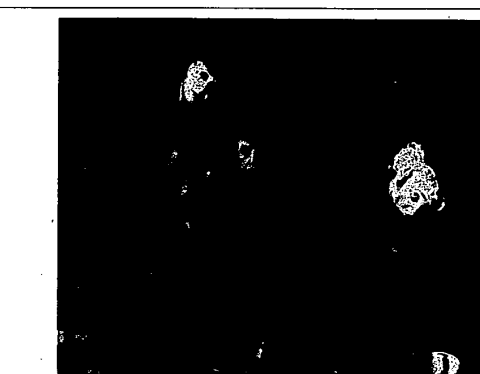
Of the cast for "A Doll's House," Salisbury said, "They are working as hard as necessary to present the very best show possible, with our supporting crew from producer right on through the parking lot committee."

An example of this, he continued, "Don Briggs has built a scaled model of a baby grand piano for the set. The piano is used for but three minutes in Act 2 and will probably be scrapped when the show is over. But the quality of workmanship is evidence of the dedication of our backstage people."

"I'M LOOKING forward to the fruition of all our labors on Feb. 17," Mrs. Salisbury said.

The show continues Feb. 18-19, 23-25, and March 2-4, in the Players Barn on Twelve Mile between Orchard Lake and Farmington Road.

Tickets are available by calling the Players' box office, 477-1066.



## 'Waiting for Godot'

The Alpha-Omega Players bring Samuel Beckett's "Waiting for Godot" to Trinity Episcopal Church, Feb. 18. The tragicomic masterpiece, called bewildering, exasperating and exciting will be produced at 7 p.m. in the church at 28890 LaMura, near Eleven Mile and Mid-diebelt. Tickets at \$3 each are available by calling the church office, 474-2880.



Last-minute details for "Hearts and Fashions Aglow" are attended to by Corinne Andrews (at left), Katherine Kakaras and Helen Koulouras. Mrs. Kakaras is president of the sponsoring group, SS. Constantine and Helen Church Philoptochos Society. (Staff photo by Harry Mauthe)

## Philoptochos Society plans a dinner dance

"Hearts and Fashions Aglow" is the name of the dinner and fashion show the Sts. Constantine and Helen Philoptochos Society has chosen for this year's annual Valentine's Day fund-raising event.

Katherine Kakaras, president of the group, has taken over the chairmanship for the affair in Farmington's Vladimir's that will feature ladies' fashions from Claire Kelley of Northville, and men's fashions by Osmun's, in Tel-Twelve Mall.

"Our members come from a large geographic area," Mrs. Kakaras said, "mostly from the north and west sides of Detroit."

With property just purchased on Newburg, she added, the group expects to build another edifice soon on the Livonia-Westland boundary.

About 130 members make up the society. "Philoptochos" is a Greek word meaning "friend of the poor." Profits from the annual fund-raiser go to benefit the needy, the aged, and the

handicapped in both Oakland and Wayne County.

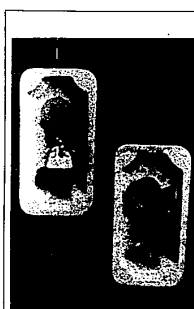
MRS. KAKARAS' co-chairman this year are Corinne Andrews and Helen Koulouras.

Both are taking ticket reservations for the event, while Mrs. Andrews did double duty by leading groups of women in workshops to make replicas of Holly Hobby from paper tole for table decorations and table prizes.

The evening will get under way at 6 p.m. with cocktails. After dinner, music will be furnished for dancing by Panchito.

Donations are \$10 per person. Mrs. Andrews can be reached by calling CR 8-3239; Mrs. Koulouras at 837-3392.

Tiny miniatures of Holly Hobby are created from paper tole and set in shadow frames by Corinne Andrews' committee. The delicate plaques will be used for table decorations and prizes at "Hearts and Fashions Aglow." (Staff photo by Harry Mauthe)



## How to get news in

When you submit information for an article in Observer & Eccentric Newspapers, keep in mind the following pointers. By heeding these recommendations, you will save delays and avoid errors.

•Be Certain you give us complete information. It's better to submit too much information than too little.

•When an individual's name is to be used in an article, be sure to give us the first and last name.

•Be sure to include your own name and phone number.

**FURNITURE SALE**  
Now thru February 25



Fine quality upholstered furniture. . . to fill in an empty corner, add to your bedroom, provide extra seating for a family room or living room. A. High back chair with cushiony button-tufted, semi-attached back cushions and loose seat cushion. Upholstered in solid beige, brown, green or rusty velvet. 29"x29"x21", \$199. B. Traditional loveseat styled with a tufted tight back and loose seat cushion. Ideally suited to combine with either of the chairs shown. Brown, olive or rust velvet. 60"x22"x29", \$325. C. Low back chair has a loose cushioned seat and back, with a versatile styling to mix and match with most any decor. In beige, brown, green or rust velvet. 34½"x22"x29", \$199.

**Jacobson's**  
Store for the Home

Woodward at Willets  
Birmingham

Telegraph at Maple  
Bloomfield Hills