

W. L. DOUGLAS

"THE SHOE THAT HOLDS ITS SHAPE"
\$3 \$3.50 \$4 \$4.50 \$5 \$6 \$7 \$8

Save Money by Wearing W. L. Douglas shoes. For sale by over 8000 shoe dealers. The Best Known Shoes in the World.

W. L. Douglas name and the retail price is stamped on the bottom of all shoes at the factory. The value is guaranteed and the wear protected against high prices for inferior shoes. The retail prices are the same everywhere. They cost no more in San Francisco than they do in New York. They are always worth the price paid for them.

The quality of W. L. Douglas shoes is guaranteed by more than 40 years experience of making fine shoes. The smart styles are the leaders in the Fashion Centres of America. They are made in a well-equipped factory at Brockton, Mass., by the highest paid, skilled shoemakers, under the direction and supervision of experienced men, all working with an honest determination to make the best shoes for the price that money can buy.

Ask your shoe dealer for W. L. Douglas shoes. If he can't supply you with the kind you want, take no other make. Write for interesting booklet explaining how to get shoes of the highest standard of quality for the price. By return mail, postage free.

LOOK FOR W. L. Douglas name and the retail price stamped on the bottom.

W. L. Douglas \$3.00 \$2.50 & \$2.00
President of W. L. Douglas Shoe Co.,
180 Spark St., Brockton, Mass.

NOTABLES ON PRISON LIST

Cassius, Richard Wagner, Bryan, Cleveland and Washington appear on Registry at Leavenworth.

Did Julius Caesar conceive the plan under which he later ruled Rome while serving a prison sentence at Leavenworth? Did the famous prize fighters, John L. Sullivan and Jack Johnson, prepare for the battles which won them the championship of the world while idling within these walls? Did Richard Wagner, the celebrated musician and composer of "Parsifal," and other great operas, find the inspirations for his masterpieces in Uncle Sam's largest prison?

Students of history may not find it recorded so. Neither do their names appear on the visitors' register of this institution, but rather on the prisoners' record of those who have been confined here, says a writer in the New Era, published at the Federal penitentiary at Leavenworth. Among the names appear many former presidents, ex-governors, generals and musicians. Besides that of the Roman emperor, whether these names represent merely that many names of persons desirous of keeping their real identity secret, or whether the namesakes of these famous men told the truth when first registered into the institutional records, is not known, but the following entries of notable names are recorded here:

Julius Caesar, Richard Wagner, George Washington, Grover Cleveland, Robert Lee, John Adams, John Hay, Carter Harrison, William Jennings Bryan, John L. Sullivan, Jack Johnson and Stonewall Jackson.

BOSCHEE'S GERMAN SYRUP

Panacea of the Home the World Over.

Why will you allow a cold to advance in your system and thus encourage more serious maladies, such as pneumonia or lung trouble, when by the timely use of a few doses of Boschee's German Syrup you can get relief. This medicine has stood the test of fifty years. It induces a deep sleep with no expectation in the morning. It is sold by druggists in all parts of the civilized world at 25 and 75 cent bottles—Adv.

Hereditary.
"O'Rourke—Oh, Dinah, Dinah, my heart's broke! My boy Mike's run away and enlisted. 'Twas the night's blood in him.

McIntyre—Well, what's the use worryin', Pat? I always told yez the boy took after his mother.

When the police arrived both were disabled.

Being able to adjust oneself to one's position isn't all; staying adjusted takes some ability, too.

Leather waste is an important ingredient of the best grade wallpaper.

Canadian Farmers Profit From Wheat

The war's devastation of European crops has caused an unusual demand for grain from the American continent. The people of the world must be fed and wheat near \$2 a bushel offers great profits to the farmer. Canada's invitation is therefore especially attractive. She wants settlers to make money and happy, prosperous homes for themselves by helping her raise immense wheat crops.

You can get a Homestead of 160 acres FREE and other lands at remarkably low prices. During the past three years Canadian wheat farmers have averaged 20 bushels to the acre and made \$1000 per acre. Wonderful crops also of Oats, Barley and Flax.

Mixed farming as profitable as industry as grain raising. The excellent range of livestock are the only food required for best or dairy purposes. Good schools, churches, markets convenient, climate excellent.

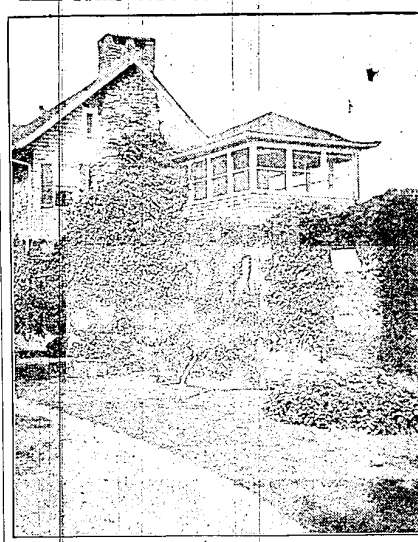
There is an extra demand for farm labor to replace the many young men who have volunteered for the war. The Government is trying farmers to put extra acreage into wheat. Write for literature and particulars as to the railway rates to Dept. of Immigration, Ottawa, Canada, or M. V. MacInnes.

176 Jefferson Ave., Detroit, Mich.
Canadian Government Agent

METZ Le Veque-Bastion Motor Sales Co.
86 Jeff Ave. STATE DISTRIBUTORS Detroit
CARS \$685 WRITE FOR CATALOG D.

The HOME BEAUTIFUL

Flowers and Shrubbery
Their Care and Cultivation



A Fine Example of Artistic Planting of the Home Grounds.

ENHANCE THE BEAUTY OF HOME-GROUNDS

By L. M. BENNINGTON.

Copy nature by sowing seeds of perennials as they ripen. Provide some sort of shade for the seedbed. A screen made of lath or of unbleached muslin will answer.

The robust-growing plants will need some sort of support. Let the support be painted green or oiled to bring out the grain of the wood, and you will find them more pleasing than rough stakes and far more satisfactory. Drive the stakes fast into the earth a little lower than the plants, so that they are inconspicuous.

The plants needing supports are such hardy perennials as delphiniums, giant foxgloves and snapdragons. Do not overlook giving stakes to dahlias, cosmos, hydrangeas and gladioli.

To maintain continuous blooming, make a habit of cutting flowers freely, and remove all the fading blossoms, and nature will reward you with a lavish hand.

If you want your bed of canna or border of caladiums to make a grand tropical showing, give them a frost-like covering of bonemeal; then stir the soil, water thoroughly, and mulch with lawn clippings. Be sure to remove the fading flowers.

NOTES ON GARDEN WORK

It is just as important to rotate garden crops as field crops, and it is certainly a great mistake to plant the same crop on the same ground three or four seasons in succession.

A tight-wire fence around your garden will do more to promote harmony between neighbors who keep chickens than anything else.

Cut out the market man when you market your garden stuff. You can always get full retail prices, and if selling vegetables is regarded as an honorable business for the grocer, why not for you?

'Tis the early vegetable that brings the big price, and the man who sticks to his jobbed and makes use of it always gets to market first.

THE WAY TO RAISE DAHLIAS

By E. VAN BENTHUYSEN.

If you want dahlia roots for next year, plant them in small pots and let them remain all summer. Keep them over winter like the old roots; and start them again in the spring. I do not say this is the only way, but it is a good one.

A good dahlia must bloom from July until frost; and if it does not discard it.

It is claimed by dahlia growers that dividing the roots will degenerate almost all the varieties; that is the reason we have such a few good flowers.

Of course a good many will believe that a cutting will not flower and make roots to keep over the winter, but it is not true; they were raised that way many years ago, and that is the way they are raised today in England, France and Germany (that is if these countries were thinking of planting instead of warring) and other countries except the United States.

It is the reason too, the Americans do not care for dahlias; they have been deceived too much. They buy old roots and get an old degenerate plant, sometimes six feet tall and more and not a blossom in sight.

In October, when nights are cool, the degenerate shoots buds, and if the frost does not catch them, they will flower maybe two weeks, and the flower be deficient in color and size. They blame the weather, etc. It is not the weather altogether, but the method of planting.

ABOUT COSMOS

If you want to get some satisfaction out of the cosmos, sow it early and push it along as fast as you can. It does not transplant easily, therefore sow it in pots. Shift it along until it is growing in a 6-inch pot. Then sink the pot in a border and from the time the plants are 6 inches high until the end of July the shoots should be pinched off. This will keep the plants low and stocky. Long after severe frosts, your cosmos will be giving you your beautiful flowers for the winter.



An Attractive Arrangement of Spring Flowers.



Is Your Back Stiff, Lame and Achy?

Do Weak Kidneys Keep You Sick, Tired and All Worn Out?

IF YOU have a constant, dull ache, or sharp pains whenever you bend or twist your back, and the kidney secretions seem disordered, too, don't waste time plastering or rubbing the back. It's likely that the cause is kidney weakness, and delay in treating the kidneys may invite uric acid poisoning, gravel, dropsy or fatal Bright's disease.

Get Doan's Kidney Pills, a special remedy for weak kidneys, used around the world and publicly recommended by 50,000 people in the U. S. A.

Personal Reports of Real Cases

DOAN'S MADE HIM WELL.

Ambrose Hatfield, Brook St., Eaton Rapids, Mich., says: "When I was twenty-five years old, I began to suffer from rheumatic pains and as I grew older, the trouble got worse. I became weak, nervous and discouraged and didn't know what to do, as the best doctors were unable to help me. My kidneys were badly affected and the secretions burned terribly in passing. My pains were mostly in my limbs and shoulders and often I had to be helped around. I had awful dizzy spells, too. Finally, I was cured by Doan's Kidney Pills and they made me well, after everything else had failed."

IN GOOD HEALTH NOW.

Mrs. Lester Brown, 418 Alice St., Flint, Mich., says: "I was helpless with kidney trouble and unable to walk without taking hold of something. For weeks, I couldn't stand and my back ached terribly. Splitting headaches came on and dizzy spells, too. I was getting worse and as the doctor's medicine didn't help me, I gave up hope. A friend urged me to try Doan's Kidney Pills and I did. Gradually the ailments left me until I was cured. Since then I have been in good health."

DOAN'S KIDNEY PILLS

50c a Box at All Stores. Foster-Milburn Co., Buffalo, N. Y., Mfg. Chemists

Luminous Radium Paint.

A luminous compound containing radium has been developed by an American manufacturer for use in locating electric-light switches in the dark, marking watch dials, etc. In powder form the compound is of about the same fineness as ordinary talcum powder, and is nearly as white; says Electrical Merchandising. This powder may be mixed with adhesives or varnishes, and used as a paint. The compound is also furnished in flexible sheets which can be cut and shaped as desired, and can be applied to uncracked or broken surfaces. This form can be used in making self-contained brass-back buttons to glue on electric switches already installed, and for manufacturers to fit into the hard rubber portions of new switch buttons. The enamel is sold to be waterproof and immune to damage from vibration, and may be applied to watch dials and indicating devices of all sorts.

CUTICURA STOPS ITCHING

Instantly in Most Cases—Write for a Free Sample.

Cuticura is wonderfully effective. The Soap to cleanse and purify, the Ointment to soothe and heal all forms of itching, burning skin and scalp affections. Besides these super-cure emollients if used daily prevent little skin troubles becoming serious. Free sample each by mail with Book. Address postcard, Cuticura, Dept. L, Boston. Sold everywhere—Adv.

Takes a Back Seat Then.

"They say he is an authority on the subject."

"He is until he takes to his wife."

Motor-driven windlasses have been designed for raising circus tent poles.

Free sample each by mail with Book. Address postcard, Cuticura, Dept. L, Boston. Sold everywhere—Adv.

COCKROACHES

are easily killed by using

Stearns' Electric Paste

Full directions in 15 languages

Sold everywhere—25c and \$1.00

U. S. Government Buys It

DEVELOPING

ANY SIZE ROLL 10

BLACKS IN 10 MINUTES

DETROIT

Farming and lumber lands in Michigan, Wisconsin, Minnesota, Iowa, Missouri, Arkansas, Louisiana, Texas, Oklahoma, Kansas, Nebraska, Colorado, New Mexico, Arizona, California, Nevada, Idaho, Utah, Montana, Wyoming, North Dakota, South Dakota, Nebraska, Kansas, Oklahoma, Texas, Louisiana, Arkansas, Missouri, Illinois, Indiana, Ohio, Pennsylvania, Maryland, Delaware, Virginia, North Carolina, South Carolina, Georgia, Florida, Alabama, Mississippi, Louisiana, Texas, Oklahoma, Kansas, Nebraska, Colorado, New Mexico, Arizona, California, Nevada, Idaho, Utah, Montana, Wyoming, North Dakota, South Dakota, Nebraska, Kansas, Oklahoma, Texas, Louisiana, Arkansas, Missouri, Illinois, Indiana, Ohio, Pennsylvania, Maryland, Delaware, Virginia, North Carolina, South Carolina, Georgia, Florida, Alabama, Mississippi, Louisiana, Texas, Oklahoma, Kansas, Nebraska, Colorado, New Mexico, Arizona, California, Nevada, Idaho, Utah, Montana, Wyoming, North Dakota, South Dakota, Nebraska, Kansas, Oklahoma, Texas, Louisiana, Arkansas, Missouri, Illinois, Indiana, Ohio, Pennsylvania, Maryland, Delaware, Virginia, North Carolina, South Carolina, Georgia, Florida, Alabama, Mississippi, Louisiana, Texas, Oklahoma, Kansas, Nebraska, Colorado, New Mexico, Arizona, California, Nevada, Idaho, Utah, Montana, Wyoming, North Dakota, South Dakota, Nebraska, Kansas, Oklahoma, Texas, Louisiana, Arkansas, Missouri, Illinois, Indiana, Ohio, Pennsylvania, Maryland, Delaware, Virginia, North Carolina, South Carolina, Georgia, Florida, Alabama, Mississippi, Louisiana, Texas, Oklahoma, Kansas, Nebraska, Colorado, New Mexico, Arizona, California, Nevada, Idaho, Utah, Montana, Wyoming, North Dakota, South Dakota, Nebraska, Kansas, Oklahoma, Texas, Louisiana, Arkansas, Missouri, Illinois, Indiana, Ohio, Pennsylvania, Maryland, Delaware, Virginia, North Carolina, South Carolina, Georgia, Florida, Alabama, Mississippi, Louisiana, Texas, Oklahoma, Kansas, Nebraska, Colorado, New Mexico, Arizona, California, Nevada, Idaho, Utah, Montana, Wyoming, North Dakota, South Dakota, Nebraska, Kansas, Oklahoma, Texas, Louisiana, Arkansas, Missouri, Illinois, Indiana, Ohio, Pennsylvania, Maryland, Delaware, Virginia, North Carolina, South Carolina, Georgia, Florida, Alabama, Mississippi, Louisiana, Texas, Oklahoma, Kansas, Nebraska, Colorado, New Mexico, Arizona, California, Nevada, Idaho, Utah, Montana, Wyoming, North Dakota, South Dakota, Nebraska, Kansas, Oklahoma, Texas, Louisiana, Arkansas, Missouri, Illinois, Indiana, Ohio, Pennsylvania, Maryland, Delaware, Virginia, North Carolina, South Carolina, Georgia, Florida, Alabama, Mississippi, Louisiana, Texas, Oklahoma, Kansas, Nebraska, Colorado, New Mexico, Arizona, California, Nevada, Idaho, Utah, Montana, Wyoming, North Dakota, South Dakota, Nebraska, Kansas, Oklahoma, Texas, Louisiana, Arkansas, Missouri, Illinois, Indiana, Ohio, Pennsylvania, Maryland, Delaware, Virginia, North Carolina, South Carolina, Georgia, Florida, Alabama, Mississippi, Louisiana, Texas, Oklahoma, Kansas, Nebraska, Colorado, New Mexico, Arizona, California, Nevada, Idaho, Utah, Montana, Wyoming, North Dakota, South Dakota, Nebraska, Kansas, Oklahoma, Texas, Louisiana, Arkansas, Missouri, Illinois, Indiana, Ohio, Pennsylvania, Maryland, Delaware, Virginia, North Carolina, South Carolina, Georgia, Florida, Alabama, Mississippi, Louisiana, Texas, Oklahoma, Kansas, Nebraska, Colorado, New Mexico, Arizona, California, Nevada, Idaho, Utah, Montana, Wyoming, North Dakota, South Dakota, Nebraska, Kansas, Oklahoma, Texas, Louisiana, Arkansas, Missouri, Illinois, Indiana, Ohio, Pennsylvania, Maryland, Delaware, Virginia, North Carolina, South Carolina, Georgia, Florida, Alabama, Mississippi, Louisiana, Texas, Oklahoma, Kansas, Nebraska, Colorado, New Mexico, Arizona, California, Nevada, Idaho, Utah, Montana, Wyoming, North Dakota, South Dakota, Nebraska, Kansas, Oklahoma, Texas, Louisiana, Arkansas, Missouri, Illinois, Indiana, Ohio, Pennsylvania, Maryland, Delaware, Virginia, North Carolina, South Carolina, Georgia, Florida, Alabama, Mississippi, Louisiana, Texas, Oklahoma, Kansas, Nebraska, Colorado, New Mexico, Arizona, California, Nevada, Idaho, Utah, Montana, Wyoming, North Dakota, South Dakota, Nebraska, Kansas, Oklahoma, Texas, Louisiana, Arkansas, Missouri, Illinois, Indiana, Ohio, Pennsylvania, Maryland, Delaware, Virginia, North Carolina, South Carolina, Georgia, Florida, Alabama, Mississippi, Louisiana, Texas, Oklahoma, Kansas, Nebraska, Colorado, New Mexico, Arizona, California, Nevada, Idaho, Utah, Montana, Wyoming, North Dakota, South Dakota, Nebraska, Kansas, Oklahoma, Texas, Louisiana, Arkansas, Missouri, Illinois, Indiana, Ohio, Pennsylvania, Maryland, Delaware, Virginia, North Carolina, South Carolina, Georgia, Florida, Alabama, Mississippi, Louisiana, Texas, Oklahoma, Kansas, Nebraska, Colorado, New Mexico, Arizona, California, Nevada, Idaho, Utah, Montana, Wyoming, North Dakota, South Dakota, Nebraska, Kansas, Oklahoma, Texas, Louisiana, Arkansas, Missouri, Illinois, Indiana, Ohio, Pennsylvania, Maryland, Delaware, Virginia, North Carolina, South Carolina, Georgia, Florida, Alabama, Mississippi, Louisiana, Texas, Oklahoma, Kansas, Nebraska, Colorado, New Mexico, Arizona, California, Nevada, Idaho, Utah, Montana, Wyoming, North Dakota, South Dakota, Nebraska, Kansas, Oklahoma, Texas, Louisiana, Arkansas, Missouri, Illinois, Indiana, Ohio, Pennsylvania, Maryland, Delaware, Virginia, North Carolina, South Carolina, Georgia, Florida, Alabama, Mississippi, Louisiana, Texas, Oklahoma, Kansas, Nebraska, Colorado, New Mexico, Arizona, California, Nevada, Idaho, Utah, Montana, Wyoming, North Dakota, South Dakota, Nebraska, Kansas, Oklahoma, Texas, Louisiana, Arkansas, Missouri, Illinois, Indiana, Ohio, Pennsylvania, Maryland, Delaware, Virginia, North Carolina, South Carolina, Georgia, Florida, Alabama, Mississippi, Louisiana, Texas, Oklahoma, Kansas, Nebraska, Colorado, New Mexico, Arizona, California, Nevada, Idaho, Utah, Montana, Wyoming, North Dakota, South Dakota, Nebraska, Kansas, Oklahoma, Texas, Louisiana, Arkansas, Missouri, Illinois, Indiana, Ohio, Pennsylvania, Maryland, Delaware, Virginia, North Carolina, South Carolina, Georgia, Florida, Alabama, Mississippi, Louisiana, Texas, Oklahoma, Kansas, Nebraska, Colorado, New Mexico, Arizona, California, Nevada, Idaho, Utah, Montana, Wyoming, North Dakota, South Dakota, Nebraska, Kansas, Oklahoma, Texas, Louisiana, Arkansas, Missouri, Illinois, Indiana, Ohio, Pennsylvania, Maryland, Delaware, Virginia, North Carolina, South Carolina, Georgia, Florida, Alabama, Mississippi, Louisiana, Texas, Oklahoma, Kansas, Nebraska, Colorado, New Mexico, Arizona, California, Nevada, Idaho, Utah, Montana, Wyoming, North Dakota, South Dakota, Nebraska, Kansas, Oklahoma, Texas, Louisiana, Arkansas, Missouri, Illinois, Indiana, Ohio, Pennsylvania, Maryland, Delaware, Virginia, North Carolina, South Carolina, Georgia, Florida, Alabama, Mississippi, Louisiana, Texas, Oklahoma, Kansas, Nebraska, Colorado, New Mexico, Arizona, California, Nevada, Idaho, Utah, Montana, Wyoming, North Dakota, South Dakota, Nebraska, Kansas, Oklahoma, Texas, Louisiana, Arkansas, Missouri, Illinois, Indiana, Ohio, Pennsylvania, Maryland, Delaware, Virginia, North Carolina, South Carolina, Georgia, Florida, Alabama, Mississippi, Louisiana, Texas, Oklahoma, Kansas, Nebraska, Colorado, New Mexico, Arizona, California, Nevada, Idaho, Utah, Montana, Wyoming, North Dakota, South Dakota, Nebraska, Kansas, Oklahoma, Texas, Louisiana, Arkansas, Missouri, Illinois, Indiana, Ohio, Pennsylvania, Maryland, Delaware, Virginia, North Carolina, South Carolina, Georgia, Florida, Alabama, Mississippi, Louisiana, Texas, Oklahoma, Kansas, Nebraska, Colorado, New Mexico, Arizona, California, Nevada, Idaho, Utah, Montana, Wyoming, North Dakota, South Dakota, Nebraska, Kansas, Oklahoma, Texas, Louisiana, Arkansas, Missouri, Illinois, Indiana, Ohio, Pennsylvania, Maryland, Delaware, Virginia, North Carolina, South Carolina, Georgia, Florida, Alabama, Mississippi, Louisiana, Texas, Oklahoma, Kansas, Nebraska, Colorado, New Mexico, Arizona, California, Nevada, Idaho, Utah, Montana, Wyoming, North Dakota, South Dakota, Nebraska, Kansas, Oklahoma, Texas, Louisiana, Arkansas, Missouri, Illinois, Indiana, Ohio, Pennsylvania, Maryland, Delaware, Virginia, North Carolina, South Carolina, Georgia, Florida, Alabama, Mississippi, Louisiana, Texas, Oklahoma, Kansas, Nebraska, Colorado, New Mexico, Arizona, California, Nevada, Idaho, Utah, Montana, Wyoming, North Dakota, South Dakota, Nebraska, Kansas, Oklahoma, Texas, Louisiana, Arkansas, Missouri, Illinois, Indiana, Ohio, Pennsylvania, Maryland, Delaware, Virginia, North Carolina, South Carolina, Georgia, Florida, Alabama, Mississippi, Louisiana, Texas, Oklahoma, Kansas, Nebraska, Colorado, New Mexico, Arizona, California, Nevada, Idaho, Utah, Montana, Wyoming, North Dakota, South Dakota, Nebraska, Kansas, Oklahoma, Texas, Louisiana, Arkansas, Missouri, Illinois, Indiana, Ohio, Pennsylvania, Maryland, Delaware, Virginia, North Carolina, South Carolina, Georgia, Florida, Alabama, Mississippi, Louisiana, Texas, Oklahoma, Kansas, Nebraska, Colorado, New Mexico, Arizona, California, Nevada, Idaho, Utah, Montana, Wyoming, North Dakota, South Dakota, Nebraska, Kansas, Oklahoma, Texas, Louisiana, Arkansas, Missouri, Illinois, Indiana, Ohio, Pennsylvania, Maryland, Delaware, Virginia, North Carolina, South Carolina, Georgia, Florida, Alabama, Mississippi, Louisiana, Texas, Oklahoma, Kansas, Nebraska, Colorado, New Mexico, Arizona, California, Nevada, Idaho, Utah, Montana, Wyoming, North Dakota, South Dakota, Nebraska, Kansas, Oklahoma, Texas, Louisiana, Arkansas, Missouri, Illinois, Indiana, Ohio, Pennsylvania, Maryland, Delaware, Virginia, North Carolina, South Carolina, Georgia, Florida, Alabama, Mississippi, Louisiana, Texas, Oklahoma, Kansas, Nebraska, Colorado, New Mexico, Arizona, California, Nevada, Idaho, Utah, Montana, Wyoming, North Dakota, South Dakota, Nebraska, Kansas, Oklahoma, Texas, Louisiana, Arkansas, Missouri, Illinois, Indiana, Ohio, Pennsylvania, Maryland, Delaware, Virginia, North Carolina, South Carolina, Georgia, Florida, Alabama, Mississippi, Louisiana, Texas, Oklahoma, Kansas, Nebraska, Colorado, New Mexico, Arizona, California, Nevada, Idaho, Utah, Montana, Wyoming, North Dakota, South Dakota, Nebraska, Kansas, Oklahoma, Texas, Louisiana, Arkansas, Missouri, Illinois, Indiana, Ohio, Pennsylvania, Maryland, Delaware, Virginia, North Carolina, South Carolina, Georgia, Florida, Alabama, Mississippi, Louisiana, Texas, Oklahoma, Kansas, Nebraska, Colorado, New Mexico, Arizona, California, Nevada, Idaho, Utah, Montana, Wyoming, North Dakota, South Dakota, Nebraska, Kansas, Oklahoma, Texas, Louisiana, Arkansas, Missouri, Illinois, Indiana, Ohio, Pennsylvania, Maryland, Delaware, Virginia, North Carolina, South Carolina, Georgia, Florida, Alabama, Mississippi, Louisiana, Texas, Oklahoma, Kansas, Nebraska, Colorado, New Mexico, Arizona, California, Nevada, Idaho, Utah, Montana, Wyoming, North Dakota, South Dakota, Nebraska, Kansas, Oklahoma, Texas, Louisiana, Arkansas, Missouri, Illinois, Indiana, Ohio, Pennsylvania, Maryland, Delaware, Virginia, North Carolina, South Carolina, Georgia, Florida, Alabama, Mississippi, Louisiana, Texas, Oklahoma, Kansas, Nebraska, Colorado, New Mexico, Arizona, California, Nevada, Idaho, Utah, Montana, Wyoming, North Dakota, South Dakota, Nebraska, Kansas, Oklahoma, Texas, Louisiana, Arkansas, Missouri, Illinois, Indiana, Ohio, Pennsylvania, Maryland, Delaware, Virginia, North Carolina, South Carolina, Georgia, Florida, Alabama, Mississippi, Louisiana, Texas, Oklahoma, Kansas, Nebraska, Colorado, New Mexico, Arizona, California, Nevada, Idaho, Utah, Montana, Wyoming, North Dakota, South Dakota, Nebraska, Kansas, Oklahoma, Texas, Louisiana, Arkansas, Missouri, Illinois, Indiana, Ohio, Pennsylvania, Maryland, Delaware, Virginia, North Carolina, South Carolina, Georgia, Florida, Alabama, Mississippi, Louisiana, Texas, Oklahoma, Kansas, Nebraska, Colorado, New Mexico, Arizona, California, Nevada, Idaho, Utah, Montana, Wyoming, North Dakota, South Dakota, Nebraska, Kansas, Oklahoma, Texas, Louisiana, Arkansas, Missouri, Illinois, Indiana, Ohio, Pennsylvania, Maryland, Delaware, Virginia, North Carolina, South Carolina, Georgia, Florida, Alabama, Mississippi, Louisiana, Texas, Oklahoma, Kansas, Nebraska, Colorado, New Mexico, Arizona, California, Nevada, Idaho, Utah, Montana, Wyoming, North Dakota, South Dakota, Nebraska, Kansas, Oklahoma, Texas, Louisiana, Arkansas, Missouri, Illinois, Indiana, Ohio, Pennsylvania, Maryland, Delaware, Virginia, North Carolina, South Carolina, Georgia, Florida, Alabama, Mississippi, Louisiana, Texas, Oklahoma, Kansas, Nebraska, Colorado, New Mexico, Arizona, California, Nevada, Idaho, Utah, Montana, Wyoming, North Dakota, South Dakota, Nebraska, Kansas, Oklahoma, Texas, Louisiana, Arkansas, Missouri, Illinois, Indiana, Ohio, Pennsylvania, Maryland, Delaware, Virginia, North Carolina, South Carolina, Georgia, Florida, Alabama, Mississippi, Louisiana, Texas, Oklahoma, Kansas, Nebraska, Colorado, New Mexico, Arizona, California, Nevada, Idaho, Utah, Montana, Wyoming, North Dakota, South Dakota, Nebraska, Kansas, Oklahoma, Texas, Louisiana, Arkansas, Missouri, Illinois, Indiana, Ohio, Pennsylvania, Maryland, Delaware, Virginia, North Carolina, South Carolina, Georgia, Florida, Alabama, Mississippi, Louisiana, Texas, Oklahoma, Kansas, Nebraska, Colorado, New Mexico, Arizona, California, Nevada, Idaho, Utah, Montana, Wyoming, North Dakota, South Dakota, Nebraska, Kansas, Oklahoma, Texas, Louisiana, Arkansas, Missouri, Illinois, Indiana, Ohio, Pennsylvania, Maryland, Delaware, Virginia, North Carolina, South Carolina, Georgia, Florida, Alabama, Mississippi, Louisiana, Texas, Oklahoma, Kansas, Nebraska, Colorado, New Mexico, Arizona, California, Nevada, Idaho, Utah, Montana, Wyoming, North Dakota, South Dakota, Nebraska, Kansas, Oklahoma, Texas, Louisiana, Arkansas, Missouri, Illinois, Indiana, Ohio, Pennsylvania, Maryland, Delaware, Virginia, North Carolina, South Carolina, Georgia, Florida, Alabama, Mississippi, Louisiana, Texas, Oklahoma, Kansas, Nebraska, Colorado, New Mexico, Arizona, California, Nevada, Idaho, Utah, Montana, Wyoming, North Dakota, South Dakota, Nebraska, Kansas, Oklahoma, Texas, Louisiana, Arkansas, Missouri, Illinois, Indiana, Ohio, Pennsylvania, Maryland, Delaware, Virginia, North Carolina, South Carolina, Georgia, Florida, Alabama, Mississippi, Louisiana, Texas, Oklahoma, Kansas, Nebraska, Colorado, New Mexico, Arizona, California, Nevada, Idaho, Utah, Montana, Wyoming, North Dakota, South Dakota, Nebraska, Kansas, Oklahoma, Texas, Louisiana, Arkansas, Missouri, Illinois, Indiana, Ohio, Pennsylvania, Maryland, Delaware, Virginia, North Carolina, South Carolina, Georgia, Florida, Alabama, Mississippi, Louisiana, Texas, Oklahoma, Kansas, Nebraska, Colorado, New Mexico, Arizona, California, Nevada, Idaho, Utah, Montana, Wyoming, North Dakota, South Dakota, Nebraska, Kansas, Oklahoma, Texas, Louisiana, Arkansas, Missouri, Illinois, Indiana, Ohio, Pennsylvania, Maryland, Delaware, Virginia, North Carolina, South Carolina, Georgia, Florida, Alabama, Mississippi, Louisiana, Texas, Oklahoma, Kansas, Nebraska, Colorado, New Mexico, Arizona, California, Nevada, Idaho, Utah, Montana, Wyoming, North Dakota, South Dakota, Nebraska, Kansas, Oklahoma, Texas, Louisiana, Arkansas, Missouri, Illinois, Indiana, Ohio, Pennsylvania, Maryland, Delaware, Virginia, North Carolina, South Carolina, Georgia, Florida, Alabama, Mississippi, Louisiana, Texas, Oklahoma, Kansas, Nebraska, Colorado, New Mexico, Arizona, California, Nevada, Idaho, Utah, Montana, Wyoming, North Dakota, South Dakota, Nebraska, Kansas, Oklahoma, Texas, Louisiana, Arkansas, Missouri, Illinois, Indiana, Ohio, Pennsylvania, Maryland, Delaware, Virginia, North Carolina, South Carolina, Georgia, Florida, Alabama, Mississippi, Louisiana, Texas, Oklahoma, Kansas, Nebraska, Colorado, New Mexico, Arizona, California, Nevada, Idaho, Utah, Montana, Wyoming, North Dakota, South Dakota, Nebraska, Kansas, Oklahoma, Texas, Louisiana, Arkansas, Missouri, Illinois, Indiana, Ohio, Pennsylvania, Maryland, Delaware, Virginia, North Carolina, South Carolina, Georgia, Florida, Alabama, Mississippi, Louisiana, Texas, Oklahoma, Kansas, Nebraska, Colorado, New Mexico, Arizona, California, Nevada, Idaho, Utah, Montana, Wyoming, North Dakota, South Dakota, Nebraska, Kansas, Oklahoma, Texas, Louisiana, Arkansas, Missouri, Illinois, Indiana, Ohio, Pennsylvania, Maryland, Delaware, Virginia, North Carolina, South Carolina, Georgia, Florida, Alabama, Mississippi, Louisiana, Texas, Oklahoma, Kansas, Nebraska, Colorado, New Mexico, Arizona, California, Nevada, Idaho, Utah, Montana, Wyoming, North Dakota, South Dakota, Nebraska, Kansas, Oklahoma, Texas, Louisiana, Arkansas, Missouri, Illinois, Indiana, Ohio, Pennsylvania, Maryland, Delaware, Virginia, North Carolina, South Carolina, Georgia, Florida, Alabama, Mississippi, Louisiana, Texas, Oklahoma, Kansas, Nebraska, Colorado, New Mexico, Arizona, California, Nevada, Idaho, Utah, Montana, Wyoming, North Dakota, South Dakota, Nebraska, Kansas, Oklahoma, Texas, Louisiana, Arkansas, Missouri, Illinois, Indiana, Ohio, Pennsylvania, Maryland, Delaware, Virginia, North Carolina, South Carolina, Georgia, Florida, Alabama, Mississippi, Louisiana, Texas, Oklahoma, Kansas, Nebraska, Colorado, New Mexico, Arizona, California, Nevada, Idaho, Utah, Montana, Wyoming, North Dakota, South Dakota, Nebraska, Kansas, Oklahoma, Texas, Louisiana, Arkansas, Missouri, Illinois, Indiana, Ohio, Pennsylvania, Maryland, Delaware, Virginia, North Carolina, South Carolina, Georgia, Florida, Alabama, Mississippi, Louisiana, Texas, Oklahoma, Kansas, Nebraska, Colorado, New Mexico, Arizona, California, Nevada, Idaho, Utah, Montana, Wyoming, North Dakota, South Dakota, Nebraska, Kansas, Oklahoma, Texas, Louisiana, Arkansas, Missouri, Illinois, Indiana, Ohio, Pennsylvania, Maryland, Delaware, Virginia, North Carolina, South Carolina, Georgia, Florida, Alabama, Mississippi, Louisiana, Texas, Oklahoma, Kansas, Nebraska, Colorado, New Mexico, Arizona, California, Nevada, Idaho, Utah, Montana, Wyoming, North Dakota, South Dakota, Nebraska, Kansas, Oklahoma, Texas, Louisiana, Arkansas, Missouri, Illinois, Indiana, Ohio, Pennsylvania, Maryland, Delaware, Virginia, North Carolina, South Carolina, Georgia, Florida, Alabama, Mississippi, Louisiana, Texas, Oklahoma, Kansas, Nebraska, Colorado, New Mexico, Arizona, California, Nevada, Idaho, Utah, Montana, Wyoming, North Dakota, South Dakota, Nebraska, Kansas, Oklahoma, Texas, Louisiana, Arkansas, Missouri, Illinois, Indiana, Ohio, Pennsylvania, Maryland, Delaware, Virginia, North Carolina, South Carolina, Georgia, Florida, Alabama, Mississippi, Louisiana, Texas, Oklahoma, Kansas, Nebraska, Colorado, New Mexico, Arizona, California, Nevada, Idaho, Utah, Montana, Wyoming, North Dakota, South Dakota, Nebraska, Kansas, Oklahoma, Texas, Louisiana, Arkansas, Missouri, Illinois, Indiana, Ohio, Pennsylvania, Maryland, Delaware, Virginia, North Carolina, South Carolina, Georgia, Florida, Alabama, Mississippi, Louisiana, Texas, Oklahoma, Kansas, Nebraska, Colorado, New Mexico, Arizona, California, Nevada, Idaho, Utah, Montana, Wyoming, North Dakota, South Dakota, Nebraska, Kansas, Oklahoma, Texas, Louisiana, Arkansas, Missouri, Illinois, Indiana, Ohio, Pennsylvania, Maryland, Delaware, Virginia, North Carolina, South Carolina, Georgia, Florida, Alabama, Mississippi, Louisiana, Texas, Oklahoma, Kansas, Nebraska, Colorado, New Mexico, Arizona, California, Nevada, Idaho, Utah, Montana, Wyoming, North Dakota, South Dakota, Nebraska, Kansas, Oklahoma, Texas, Louisiana, Arkansas, Missouri, Illinois, Indiana, Ohio, Pennsylvania, Maryland, Delaware, Virginia, North Carolina, South Carolina, Georgia, Florida, Alabama, Mississippi, Louisiana, Texas, Oklahoma, Kansas, Nebraska, Colorado, New Mexico, Arizona, California, Nevada, Idaho, Utah, Montana, Wyoming, North Dakota, South Dakota, Nebraska, Kansas, Oklahoma, Texas, Louisiana, Arkansas, Missouri, Illinois, Indiana, Ohio, Pennsylvania, Maryland, Delaware, Virginia, North Carolina, South Carolina, Georgia, Florida, Alabama, Mississippi, Louisiana, Texas, Oklahoma, Kansas, Nebraska, Colorado, New Mexico, Arizona, California, Nevada, Idaho, Utah, Montana, Wyoming, North Dakota, South Dakota, Nebraska, Kansas, Oklahoma, Texas, Louisiana, Arkansas, Missouri, Illinois, Indiana, Ohio, Pennsylvania, Maryland, Delaware, Virginia, North Carolina, South Carolina, Georgia, Florida, Alabama, Mississippi, Louisiana, Texas, Oklahoma, Kansas, Nebraska, Colorado, New Mexico, Arizona, California, Nevada, Idaho, Utah, Montana, Wyoming, North Dakota, South Dakota, Nebraska, Kansas, Oklahoma, Texas, Louisiana, Arkansas, Missouri, Illinois, Indiana, Ohio, Pennsylvania, Maryland, Delaware, Virginia, North Carolina, South Carolina, Georgia, Florida, Alabama, Mississippi, Louisiana, Texas, Oklahoma, Kansas, Nebraska, Colorado, New Mexico, Arizona, California, Nevada, Idaho, Utah, Montana, Wyoming, North Dakota, South Dakota, Nebraska, Kansas, Oklahoma, Texas, Louisiana, Arkansas, Missouri, Illinois, Indiana, Ohio, Pennsylvania, Maryland, Delaware, Virginia, North Carolina, South Carolina, Georgia, Florida, Alabama, Mississippi, Louisiana, Texas, Oklahoma, Kansas, Nebraska, Colorado, New Mexico, Arizona, California, Nevada, Idaho, Utah, Montana, Wyoming, North Dakota, South Dakota, Nebraska, Kansas, Oklahoma, Texas, Louisiana, Arkansas, Missouri, Illinois, Indiana, Ohio, Pennsylvania, Maryland, Delaware, Virginia, North Carolina, South Carolina, Georgia, Florida, Alabama, Mississippi, Louisiana, Texas, Oklahoma, Kansas, Nebraska, Colorado, New Mexico, Arizona, California, Nevada, Idaho, Utah, Montana, Wyoming, North Dakota, South Dakota, Nebraska, Kansas, Oklahoma, Texas, Louisiana, Arkansas, Missouri, Illinois, Indiana, Ohio, Pennsylvania, Maryland, Delaware, Virginia, North Carolina, South Carolina, Georgia, Florida, Alabama, Mississippi, Louisiana, Texas, Oklahoma, Kansas, Nebraska, Colorado, New Mexico, Arizona, California, Nevada, Idaho, Utah, Montana, Wyoming, North Dakota, South Dakota, Nebraska, Kansas, Oklahoma, Texas, Louisiana, Arkansas, Missouri, Illinois, Indiana, Ohio, Pennsylvania, Maryland, Delaware, Virginia, North Carolina, South Carolina, Georgia, Florida, Alabama, Mississippi, Louisiana, Texas, Oklahoma, Kansas, Nebraska, Colorado, New Mexico, Arizona, California, Nevada, Idaho, Utah, Montana, Wyoming, North Dakota, South Dakota, Nebraska, Kansas, Oklahoma, Texas, Louisiana, Arkansas, Missouri, Illinois, Indiana, Ohio, Pennsylvania, Maryland, Delaware, Virginia, North Carolina, South Carolina, Georgia, Florida, Alabama, Mississippi, Louisiana, Texas, Oklahoma, Kansas, Nebraska, Colorado, New Mexico, Arizona, California, Nevada, Idaho, Utah, Montana, Wyoming, North Dakota, South Dakota, Nebraska, Kansas, Oklahoma, Texas, Louisiana, Arkansas, Missouri, Illinois, Indiana, Ohio, Pennsylvania, Maryland, Delaware, Virginia, North Carolina, South Carolina, Georgia, Florida, Alabama, Mississippi, Louisiana, Texas, Oklahoma, Kansas, Nebraska, Colorado, New Mexico, Arizona, California, Nevada, Idaho, Utah, Montana, Wyoming, North Dakota, South Dakota, Nebraska, Kansas, Oklahoma, Texas, Louisiana, Arkansas, Missouri, Illinois, Indiana, Ohio, Pennsylvania, Maryland, Delaware, Virginia, North Carolina, South Carolina, Georgia, Florida, Alabama, Mississippi, Louisiana, Texas, Oklahoma, Kansas, Nebraska, Colorado, New Mexico, Arizona, California, Nevada, Idaho, Utah, Montana, Wyoming, North Dakota, South Dakota, Nebraska, Kansas, Oklahoma, Texas, Louisiana, Arkansas, Missouri, Illinois, Indiana, Ohio, Pennsylvania, Maryland, Delaware, Virginia, North Carolina, South Carolina, Georgia, Florida, Alabama, Mississippi, Louisiana, Texas, Oklahoma, Kansas, Nebraska, Colorado, New Mexico, Arizona, California, Nevada, Idaho, Utah, Montana, Wyoming, North Dakota, South Dakota, Nebraska, Kansas, Oklahoma, Texas, Louisiana, Arkansas, Missouri, Illinois, Indiana, Ohio, Pennsylvania, Maryland, Delaware, Virginia, North Carolina, South Carolina, Georgia, Florida, Alabama, Mississippi, Louisiana, Texas, Oklahoma, Kansas, Nebraska, Colorado, New Mexico, Arizona, California, Nevada, Idaho, Utah, Montana, Wyoming, North Dakota, South Dakota, Nebraska, Kansas, Oklahoma, Texas, Louisiana, Arkansas, Missouri, Illinois, Indiana, Ohio, Pennsylvania, Maryland, Delaware, Virginia, North Carolina, South Carolina, Georgia, Florida, Alabama, Mississippi, Louisiana, Texas, Oklahoma, Kansas, Nebraska, Colorado, New Mexico, Arizona, California, Nevada, Idaho, Utah, Montana, Wyoming, North Dakota, South Dakota, Nebraska, Kansas, Oklahoma, Texas, Louisiana, Arkansas, Missouri, Illinois, Indiana, Ohio, Pennsylvania, Maryland, Delaware, Virginia, North Carolina, South Carolina, Georgia, Florida, Alabama, Mississippi, Louisiana, Texas, Oklahoma, Kansas, Nebraska, Colorado, New Mexico, Arizona, California, Nevada, Idaho, Utah, Montana, Wyoming, North Dakota, South Dakota, Nebraska, Kansas, Oklahoma, Texas, Louisiana, Arkansas, Missouri, Illinois, Indiana, Ohio, Pennsylvania, Maryland, Delaware, Virginia, North Carolina, South Carolina, Georgia, Florida, Alabama, Mississippi, Louisiana, Texas, Oklahoma, Kansas, Nebraska, Colorado, New Mexico, Arizona, California, Nevada, Idaho, Utah, Montana, Wyoming, North Dakota, South Dakota, Nebraska, Kansas, Oklahoma, Texas, Louisiana, Arkansas, Missouri, Illinois, Indiana, Ohio, Pennsylvania, Maryland, Delaware, Virginia, North Carolina, South Carolina, Georgia, Florida, Alabama, Mississippi, Louisiana, Texas, Oklahoma, Kansas, Nebraska, Colorado, New Mexico, Arizona, California, Nevada, Idaho, Utah, Montana, Wyoming, North Dakota, South Dakota, Nebraska, Kansas, Oklahoma, Texas, Louisiana, Arkansas, Missouri, Illinois, Indiana, Ohio, Pennsylvania, Maryland, Delaware, Virginia, North Carolina, South Carolina, Georgia, Florida, Alabama, Mississippi, Louisiana, Texas, Oklahoma, Kansas, Nebraska, Colorado, New Mexico, Arizona, California, Nevada, Idaho, Utah, Montana, Wyoming, North Dakota, South Dakota, Nebraska, Kansas, Oklahoma, Texas, Louisiana, Arkansas, Missouri, Illinois, Indiana, Ohio, Pennsylvania, Maryland, Delaware, Virginia, North Carolina, South Carolina, Georgia, Florida, Alabama, Mississippi, Louisiana, Texas, Oklahoma, Kansas, Nebraska, Colorado, New Mexico, Arizona, California, Nevada, Idaho, Utah, Montana, Wyoming, North Dakota, South Dakota, Nebraska, Kansas, Oklahoma, Texas, Louisiana, Arkansas, Missouri, Illinois, Indiana, Ohio, Pennsylvania, Maryland, Delaware, Virginia, North Carolina, South Carolina, Georgia, Florida, Alabama, Mississippi, Louisiana, Texas, Oklahoma, Kansas, Nebraska, Colorado, New Mexico, Arizona, California, Nevada, Idaho, Utah, Montana, Wyoming, North Dakota, South Dakota, Nebraska, Kansas, Oklahoma, Texas, Louisiana, Arkansas, Missouri, Illinois, Indiana, Ohio, Pennsylvania, Maryland, Delaware, Virginia, North Carolina, South Carolina, Georgia, Florida, Alabama, Mississippi, Louisiana, Texas, Oklahoma, Kansas, Nebraska, Colorado, New Mexico, Arizona, California, Nevada, Idaho, Utah, Montana, Wyoming, North Dakota, South Dakota, Nebraska, Kansas, Oklahoma, Texas, Louisiana, Arkansas, Missouri, Illinois, Indiana, Ohio, Pennsylvania, Maryland, Delaware, Virginia, North Carolina, South Carolina, Georgia, Florida, Alabama, Mississippi, Louisiana, Texas, Oklahoma, Kansas, Nebraska, Colorado, New Mexico, Arizona, California, Nevada, Idaho, Utah, Montana, Wyoming, North Dakota, South Dakota, Nebraska, Kansas, Oklahoma, Texas, Louisiana, Arkansas, Missouri, Illinois, Indiana, Ohio, Pennsylvania, Maryland, Delaware, Virginia, North Carolina, South Carolina, Georgia, Florida, Alabama, Mississippi, Louisiana, Texas, Oklahoma, Kansas, Nebraska, Colorado, New Mexico, Arizona, California, Nevada, Idaho, Utah, Montana, Wyoming, North Dakota, South Dakota, Nebraska, Kansas, Oklahoma, Texas, Louisiana, Arkansas, Missouri, Illinois, Indiana, Ohio, Pennsylvania, Maryland, Delaware, Virginia, North Carolina, South Carolina, Georgia, Florida, Alabama, Mississippi, Louisiana, Texas, Oklahoma, Kansas, Nebraska, Colorado, New Mexico, Arizona, California, Nevada, Idaho, Utah, Montana, Wyoming, North Dakota, South Dakota, Nebraska, Kansas, Oklahoma, Texas, Louisiana, Arkansas, Missouri, Illinois, Indiana, Ohio, Pennsylvania, Maryland, Delaware, Virginia, North Carolina, South Carolina, Georgia, Florida, Alabama, Mississippi, Louisiana, Texas, Oklahoma, Kansas, Nebraska, Colorado, New Mexico, Arizona, California, Nevada, Idaho, Utah, Montana, Wyoming, North Dakota, South Dakota, Nebraska, Kansas, Oklahoma, Texas, Louisiana, Arkansas, Missouri, Illinois, Indiana, Ohio