



The Easiest Way is the best way—

Why not progress with the times; why not eliminate with the drudge of Monday wash day and at the same time, save expense?

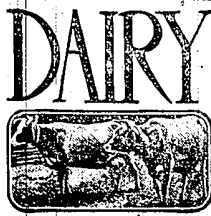
CRYSTAL ELECTRIC WASHING MACHINES

Are the highest types of Electric Washers. They do the work in half the time, do it better—safer and the cost of power is less than two cents per hour.

They come complete with a three way swinging type wringer and the one way continuous drive cylinder washer clothes spotlessly clean without the "wily" that ruins them.

For Valuable Information Phone Market 8646—or write to the

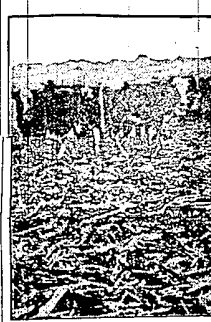
Crystal Washing Machine Co.
Detroit, Michigan, Piquette Ave., near Woodward.



QUIETNESS OF GREAT VALUE

Something That Should Be Insisted Upon and Rigidly Enforced Among the Dairy Herds.

The value of quietness among the dairy herds is something that should be insisted upon and rigidly enforced. The intruding hunter is fast being kept out by signs to that effect; but even then one or two sometimes get in when no one is looking. A cow usually hates a dog, and her hate is even increased when the dog is noisy or runs at her. She may not get over the agitation for a day or two, and in



Contented Members of Herd.

the meantime the disturbance shows its effect in the milk supply. If the manager of a herd has nothing to offer in the way of kindness or love to his animals he can do little harm. He may apparently lose control of himself at times and feel justified in delivering severe beatings; but such actions are not good as an excuse. Forbid any kicking in the bellies or any striking over the muzzles or backs with clubs. Cases are on record of serious harm being done to cattle by those who do not take some forethought on how to manage with reason.

CALVES ON SEPARATOR MILK

Poor Practice to Pour Liquid Into Dirty Trough and Let Animals "Drink Their Fill."

If we are ready to admit that a cow's milk is too good for a cow to eat and that it is economically profitable to rob the future cow for the sake of present gains, then it is quite necessary to know how to raise calves on separator milk or other artificial and unnatural foods, says a writer. The usual practice is to pour separator milk, sometimes cold, into a large trough which is never cleaned and allow the calves to drink until they are satisfied. This method means potbellied, ratty calves, that never make the growth they should, even though they fortunately escape the ravages of indigestion.

COW RELISHES ROUGH FEEDS

Animal Possessed of Large, Roomy Digestive Tract That Is Built for Handling Bulky Feed.

Unlike the hog, the cow has a large roomy digestive tract that is built for the handling of rough feeds. The cow digests her feed to best advantage when her ration is bulky, as the bulky parts of the feed keep the small particles of grain apart and thus allow them to be thoroughly acted on by the digestive juices. The hay and stage should not constitute all the bulk of the ration, as part of it can profitably be supplied by such feeds as corn and cobmeal, ground oats, wheat bran and distillers' dried grains.—*Jowa Circular*

RINGING SELF-SUCKING COW

One Plan Is to Put Brass Ring in Animal's Nose—Gets Ring Instead of Her Teat.

A number of methods of preventing a cow from sucking herself have been suggested, among them being the use of putting a brass ring in the cow's nose large enough that when she opens her mouth to take hold of the teat she will get the ring. If a large ring is used two small ones can be linked into the one that goes in the nose, which will answer the same purpose.

FARMER WHO WILL SUCCEED

Print Over High Cost of Labor and Feed for Meat, Milk, Dairy and Poultry Products.

Advanced prices for meat, milk, dairy and poultry products will bring a profit over the high cost of feed and labor, and the farmer who has kept a good stock of breeding animals in good care to produce handsome returns.

ORCHARD GLEANINGS

DESTROY PEACH TREE BORER

Clemson College Recommends Mounding Trees to Height of Eight Inches to Kill Insects.

(Clemson College Bulletin.)

Pull up the earth around the base of the peach tree to a height of eight inches; take these mounds down October 15th. The reason for the above recommendation is as follows: The peach tree borer has four life history stages. (a) The eggs laid in the fall hatch into (b) worms; these worms when full grown come out of the tree into the ground and form the (c) pupa or resting stage. This stage is passed about an inch from the trees and about an inch below the surface of the soil. From this pupa the (d) full grown, beautiful, clearwinged moths emerge, which lay the eggs for the next year's generation. There is only one generation each year.

If you mound too early many of the worms in the tree will work upward. They begin to come out into the soil July 1, and continue to come out until about August 22. If you mound the trees as above stated then the pupa has about eight inches of soil over it, through which the moth cannot dig to come to the surface. The female lays her eggs on the bark at the surface of the soil. As the eggs are nearly laid by October 1, and hatch out by October 15, it is readily seen that when the mounds are taken down the worms are eight inches high on the tree, and if the tree is examined the second week of November any worms may be easily located, and worms in the outer bark they can be removed with the least trouble.

VINES ARE COVER FOR WALK

Grape Vines Readily Lends Itself to Arbor Training, May Be Used for Screening Porches.

(By L. C. CORBETT.)

The grape vine may be trained in many desirable ways besides that of covering an arbor. It may be used as a shade or screening for tender plants by following certain systems of pruning and training. Strawberries adapt themselves readily to such situations if the shade is not allowed to become too dense. Among flowering plants none will thrive better under such conditions than pansies and violets, and among garden vegetables lettuce and radishes may be successfully grown underneath a canopy of grape vines, as they will be out of the way before a very dense shade is formed by the leaves of the grape. Asparagus, too, may be grown under a shade of this character, as it will make a large



Grape-Vine-Glad Porch.

share of its growth before the grape will have become dense enough to interfere with the young, tender shoots. A cozy summer veranda may be covered by grape vines, thus securing the double advantage of a cool shady nook during the summer and a supply of fruit in autumn. In one garden a small arbor house was made to support an Isabelle vine which in one year produced 300 clusters of grapes.

SPRAYING TO BE EFFECTIVE

Thorough Work Requires Good Tools Intelligently Used—Sprengers of All Kinds Used.

Spraying, to be effective, must be thorough, and thorough spraying requires good tools intelligently handled. The four and six room tractor sprayers now on the market make it easy for the up-to-date farmer to protect his crops from blight and other fungus troubles. It has recently been shown that for complete protection it is necessary to cover the under as well as the upper surface of the leaves. The low-nozzle tractor sprayer covers the entire plant-top, underside and all sides. Sprayers are now made in a great variety of styles, and sizes—from the small knapsack sprayer to the engine-driven power sprayer delivering spray under high pressure.

IMMENSE DAMAGE BY WORMS

Current and Gooseberry Bushes Have Disappeared in Some Sections—Work for Renewal.

In some sections of the country the currant and gooseberry have almost entirely disappeared. Borers, worms and mildew, allowed to have their way unchecked, wrote for much for the bushes to withstand, and these old-time favorites were allowed to die. If you care enough for these fruits it will only require a little work and a very small expense for white hellebore, to take care of the current and gooseberry worms that eat the foliage; and bordeaux mixture will stop the mildew on gooseberries.

Oh! That Grand and Glorious Feeling!!

When you've been tired and achy and grouchy and you take a refreshing

TURKISH BATH at the ORIENTAL

And you rub off cool and dry again—it sure is a grand and glorious feeling.

Try One This Week!

Oriental Hotel
Library Ave. Detroit

HOTEL CHARLEVOIX
DETROIT
European Plan—Absolutely Fireproof Rates—\$1.50 and upward with bath Special Noonday Luncheon, 60c

LIBRARY PARK HOTEL
Cor. Gratiot & Library.
Rates \$1.00 and up
Moody Lunch 40c
Sunday Dinner 50c

A. E. HAMILTON, Mgr.

SPRUNK Engraving Co.
Artists and Engravers,
700 Marquette Bldg., Detroit, Mich.
Engraving Dept. Open Day and Night

Choice Bargains—
Farms—Homes—Two-Family Flats, Apartments. We specialize in high class improved property. If you have a good farm to exchange for city property write us. Bank references.

Maloney-Campbell Realty Co., (Inc.)
504 Free Press Bldg., Detroit

CHOOSE... USED CARS

From More Than Fifty High Grade
If you are in the market for a used car of dependability. You will find always a worthy selection to choose from here. We may have just the car you are looking for. Write the

PACKARD MOTOR
Used Car Department, Detroit.

ROMAINE WENDELL
VOCAL TEACHER
(Also at Harold Jarvis.)
Talent Furnished for Entertainments
108 Broadway, Detroit, Michigan

ELECTROLYSIS Phone Main 329
Nothing Nicer Anywhere
Moore's Hair Shop
BEAUTY CULTURE AND FINISH
By Moore's New Improved Method
Wigs and Toupees a Specialty
Woodward Arcade 244 Woodward Ave. Detroit

RADIATORS REPAIRED EXPERT RADIATOR AND FENDER REPAIRING
Quick service at reasonable prices. All work guaranteed. Phone Grand 511
Michigan Radiator & Fender Repair Co.,
700 WOODWARD AVE. DETROIT, MICHIGAN

WELDING
SMITH-HAMBURG-SCOTT COMPANY
PHONE GRAND 635. Largest Plant in State.
690 JOHN R. STREET at Crozestown.

TIRES AND TUBES
Slightly Used, Factory Seconds and New Savings 4500 Mile Guaranteed Tires. Write Us. We Can Save You Money.
FIX BROS., 276-278 John R. S.
OLD AUTOS WANTED.

Get Down to Plain Facts and You'll Know

Why Bond Clothes Are Popular

First of all—men who are now wearing Bond's Clothes know that we back up every claim with real merchandise. Ours is a straight, out-and-out business proposition. We cut out all unnecessary selling expense by our system of dealing direct with the wearer. Figuring these items down to each suit or overcoat, we believe we save you \$10.

QUALITY—THE CERTAIN FACTOR IN ALL BOND'S CLOTHES

The word "QUALITY" means something at Bond's; we're frank to admit that quality costs us more to produce than it ever did—the same condition exists in every first-class manufacturing establishment. But we are determined to keep Bond's quality up to Bond's standard, come what may. In the long run, it's QUALITY that counts.

SUITS TOPCOATS OVERCOATS RAINCOATS EVENING CLOTHES

\$17¹/₂

Just One Price Worth \$10.00 More.

To maintain Bond's quality, we were forced to raise the price. It was the only thing we could do and give you the quality which you expect—and to which you are entitled. Bond's Clothes are the same good "buy" this season as they were last. The price is a little more—but the quality is the same—and that's more than some clothes can truthfully say.



BOND'S
New York
Detroit
Cleveland
Akron
Toledo
Pittsburgh

Telephone Main 3298—Business.
Grand 7521 M.—Residence.

Message Parlors for Ladies

SWEDISH ELECTRIC

SPECIALS MASSAGE

Baths, Electric Light, Electric

Showers

Formerly connected with Battle Creek

Branch of Detroit,

MRS. JANET HAYNES

604 Woodward Arcade, Detroit, Mich.

WEST ART ASSOCIATION

LTD.

PICTURES AND PICTURE FRAMES

124 Grand River Ave.

G. A. R. Building, Detroit, Mich.

Charles C. Deuel Co.

75 Jones St., Detroit

Welding

Worthless Machinery Repaired

Work Guaranteed

Prices Reasonable

Sara A. Smith

Accordian Playing and Buttons

Covered to Order.

Hematizing.

Room 53 Traugott Schmidt Bldg.

Formerly Valpey Bldg.

213 Woodward Ave., Detroit

WEDDING

Invitations & Announcements

Engraved and Printed

THE F. L. REEG CO.

142 Grand River Ave., West

Detroit.

Detroit Theatres

Adams.

The story of "The Lion and the Mouse" is of love and high finance. It is brief as follows: Judge Rossmore is universally recognized as a man of devoted literary attainments. His daughter has written a successful book, "The Ocean," in which she cleverly attacks one John Burkett Rider, a power in the financial world and a bitter enemy of her father.

The Judge, while strictly honest in spirit has committed the indiscretion of having certain correspondence, referred to the purchase of securities. This correspondence falls into the hands of Rider, whose aim it is to have the old Judge impeached, and put in his place a man whose sympathies are identical with his own.

Madison.

In "The Call of the East," a remarkable photograph of the Orient and the Occident, Sessue Hayakawa returns to the Madison theater for one week commencing Sunday, October 23.

"The Call of the East" was written by Beulah Marie Dix who also arranged the story for the screen, especially for Beulah Dix. Tsuru Aoki, winsome little wife of the actor, who has played opposite him in many previous productions, is seen again in support of her husband in this photograph.

Washington.

A Train Wreck, a Horse Race and an Auto Smash-up Provide a Few Thrills.

"The Whirl," the supreme offering of fiction is coming to the Washington theater for one week only, commencing Sunday, October 23.

Garrick.

"Johnny Get Your Gun."

How many persons are there who know how moving pictures are made, or are familiar with the life and methods of California's "movie" studios? How many have had a realistic "close-up" of the heroes and heroines they admire on the screen? How many would like to enjoy this privilege? Doubtless everyone who loves the theatre.

Well, everyone will have that choice next Monday evening at the Garrick, for the theatre when "Johnny Get Your Gun." John Ford's hilarious glow (as known for a week's duration) with Louis Brennan, the original New York star, in the leading role, supported by the Broadway cast.