

# Highway marvel

## Interchange joins 3 major transportation arteries

By RON GARRINKE

If all goes according to plan, the Farmington community will experience massive growth this fall.

With the completion of the massive I-75, I-96 and I-496 interchange in the southeastern section of Farmington Hills, the area will be transformed into a major distribution center for southeastern Michigan.

And the potential for expansion is endless as the community is linked directly with Ohio, Detroit and the rest of the state.

I-75 is a quick connector heading north to Farmington Hills from Toledo, while I-96 is the major artery to downtown Detroit. I-96 links the region with the entire state as it heads westward to Lake Michigan and connects with U.S. 24, which in turn joins I-75 near Flint and Ann Arbor and Toledo to the south.

"Covering several square miles, it is one of the most impressive highway interchanges in the state," says State Highway Department Project Engineer John Baxter, the man in charge of the construction job.

"If everything works out as we have planned, most sections of the interchange will open later this fall. We're running on a very tight schedule and have been doing so since we began construction back in March of 1974."

GIANT EARTH movers and tandem dirt haulers moved in two years ago and started clearing the way for the new freeway system. Now it's up to the grading and paving crews to ready the highways for their anticipated opening.

Construction workers, surveyors, heavy-duty equipment operators as well as sod companies, steel workers and state department highway crews have teamed together

to complete this maze of concrete and steel.

Part of the interchange is open, but Baxter says the project is only 50 per cent completed. All the bridges are built, while pavement still remains to be laid.

The interchange is designed to handle more than 130,000 cars daily. When it opens later this year, highway officials predict that figure will be substantially lower until trucking and shipping companies route deliveries through the Farmington community.

"It will save a lot of time both for persons just wanting to get from one place to another. Once they learn about it, traffic flow will begin to increase on a daily basis, someday bringing us up to our anticipated 30-year projection," a department official said.

Another innovative feature of the massive new interchange and I-75 system will

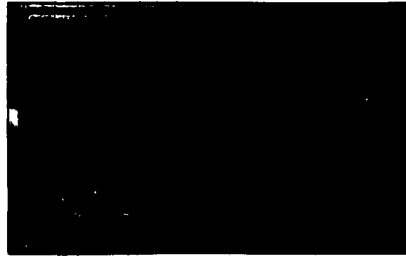
be a bike route along side the roadway throughout Wayne and Oakland Counties.

THIS TRAIL will follow the highway about 50 feet from the road on the west side right of way, providing miles of riding enjoyment and smooth surfaces for biking enthusiasts.

Presently, I-75 will end at the new interchange. But state highway officials have planned for the expressway to someday head north, eventually linking up with I-75 west of Pontiac.

"These plans are now in the talking stages. Environmental impact studies are being made and land is being surveyed, but the biggest problem will probably be money," Baxter concludes.

And as construction continues through the summer and into the fall, the Farmington community should begin to eye the potential for industrial and residential growth.



Caution signs like this warn motorists traveling the open sections of the interchange not to proceed further because only 10 per cent of the huge connecting interstate system is completed.



Looking south on I-275, a trailer truck passes over the Grand River bridge as construction crews ready the expressway for its late fall opening date.

Staff photos by Harry Mauthe

Bike riders already are taking advantage of the quiet bike paths that follow the interstate highway through Wayne County—about 50 feet to the side of the roadway on state right-of-way. Construction workers ready a bridge on the asphalt free-wheeling trail in the background.



ABOVE: To the right lies the connector-distributor ramp that will join northbound I-275 with eastbound I-96 and further north with I-696, just beyond the Grand River overpass above. RIGHT: A car cruises on I-696 beneath the I-275 connector which links the new expressway with I-96 just east of the Novi interchange. The bridge in the foreground is the southbound ramp off I-696 which provides smooth transition from one highway to the other among the complexities of an interchange where three major highways intersect.

**'This new interchange will transform the Farmington region into a major distribution center for southeastern Michigan.'**

— Planners

## RED HOT SKI SALE

### Northland Only

save **30% to 50%**  
now on famous skis, boots,  
poles, bindings and apparel

- famous maker like Hart, Head, Munari, Rossignol, San Marco, Scott, White Stag
- prize surprise—Ski Weekend for 2, Boyne Mountain given away—come in for details
- Northland only, in a place cleared just for it, on the First Level, next to Toys.

### skis by Rossignol

model	orig.	sale
Olympia	\$125	88.99
Smash	\$170	118.99
Viva II	\$180	110.99
Exhibition	\$145	99.99
Frontier	\$140	88.99

### ski boots by Munari

style	in season value	sale
Rally 960	\$95	85.99
Rally Expert	\$120	83.99
Rally Pro	\$140	97.99
Rally Super	\$175	121.99
Mirafiori	\$95	85.99
Mirabelle	\$125	86.99
Rally Freestyle	\$155	107.99

### ski poles

#### by Scott

style	in season value	sale
blue/black	\$20	11.99

### bindings

style	in season value	sale
American by Hart	\$55	19.99
G.T. by Look	\$55	37.99

### famous-maker ski-wear 30% to 50% off

Parkas: men's and women's, orig. \$40-\$150, now 19.97-\$9.97;  
youths', orig. \$20-\$36, now 10.97  
Sweaters: men's and women's, orig. \$25-\$40, now 15.97  
Ski suits: men's and women's, orig. \$125-\$250, now 79.97

SHOP MONDAY THROUGH SATURDAY AT HUDSON'S NORTHLAND, 9:30 TILL 9.

## HUDSON'S