

Antique White

Bittersweet

California Poppy

Treesweet



Leaf Song



Blue River



Morning Sun



October Fest



Hello Spring

Noritake &amp; Mikasa Sale!

SAVE 15% to 30%

on selected patterns in complete services for 8"  
reg. \$140.00-\$206.90 SALE \$118.95 \$144.99Imported crystal chandelier set—  
orig. \$14.00  
SALE \$9.99

the table setting

335 east maple road

birmingham, michigan 48011

644-5750

\*quantities limited

bridal  
registryMon.-Sat. 10-5:30  
Fri. til 9

To Celebrate Our  
Bicentennial Year  
We Have Selected a Group of Spring and Summer  
Footwear Values From \$23 to \$60  
**TO SELL FOR \$17.76 FOR 3 DAYS ONLY**  
CASH ONLY.

Also: Our complete  
designer handbag  
collection**20% OFF**

*Davidson's*  
SHOE AND HANDBAG SALON  
Birmingham

249 Pierce Street

642-9646

Ruth Seligson of  
**TODAY'S BRIDE**  
summer  
clearance  
on all current designer samples of  
gowns for the Bride and her Bridesmaid.

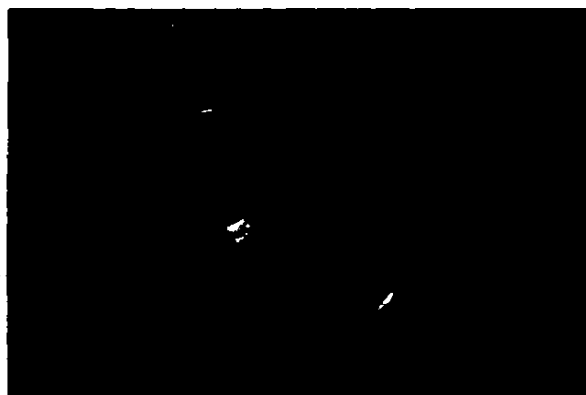
**1/2** off and below  
included is a group  
of designer lingerie  
and loungewear

*Davidson's*  
BIRMINGHAM ( ) 249 PIERCE STREET

Andrew Rismann's

**DIAMOND GALLERY**

"Your Source For Fine Jewelry"

**"Being Square Is In"**The look and style that is setting the pace in today's jewelry  
fashions. Handsomely fashioned bangle bracelet in gleaming  
14 kt. gold...one week only \$170.Expert Jewelry And Watch Repair • Custom Design Work  
128 S. Woodward • 642-5895 • 9:30 to 6 Daily • Thurs & Fri Til 9  
1st. block south of Maple in Downtown Birmingham

**SUMMER CLEARAWAY**  
REMAINING SALE ITEMS  
**30% to 60% OFF**  
All Around the Store

Special Groups at  
**1/2 or 1/2**  
OFF REGULAR PRICE  
Cash or Bankcards only

*Davidson's*  
of Pierce Street  
BIRMINGHAM

Thursday 'til 9 p.m. MI 4-7200