

Advanced degrees pay off, survey finds

Will pay, judging by the annual survey of Wayne State University graduates by the WSL Placement Services Office.

The survey seeks to determine what happens to college graduates when they enter the world of work.

In the most recent survey, nearly 3,000 of the 6,479 graduates of WSU's December, 1974 and June 1975 classes responded. Most revealed salary information in the confidential questionnaire.

Two obvious points emerged: Salaries in all degree classifications advanced from the previous year. And those with more

than one degree were clearly better off financially than less educated persons.

BACHELORS' DEGREE recipients reported an average annual salary of \$11,499, for example, while persons who received master's degrees earned an average \$13,286. Educational specialist degree holders were paid \$11,956. Ph.D. degree recipients, \$17,067, and law degree holders, \$11,291.

Average salaries reported the year before were about \$1,000 less, except for those holding law degrees, who only

earned \$1 more in 1974-75.

While graduates earning the Ed.D. degree reported an average salary of \$21,414, in most cases that figure reflects years of employment with the same school system. Conversely, the \$11,956 salary paid to medical doctors reflects income of doctors in their first year of residency.

PHARMACY (\$17,541), engineering (\$11,174) and business administration (\$13,128) graduates led the bachelor's degree recipients in salary, while education (\$10,066), liberal arts (\$10,756) and Min-

istry College (\$9,277) graduates were among the lowest paid.

The job picture wasn't all sweetness and light with grads of a year ago, however. They reported an overall unemployment rate of 7.5 per cent, only slightly below the national average of eight per cent at that time.

And 17 per cent reported they were working in jobs unrelated to their career fields. In many cases that would have occurred by choice, as in the instance of a full-time employee earning a degree in a different field as a part-time student. Six per cent of the WSL students said they worked for their employer before graduation. But in other cases it clearly was a matter of taking an available job even if it was unrelated to ones chosen field.

AJAX FLOOR COVERING

32639 FORD RD. 427-6620
1/2 blk. E. of Venoy

ARMSTRONG SOLARIAN
NO WAX
12FT. WIDE CUSHION
\$799
sq. yd.

LINOLEUM
9x12
\$299
sq. yd.

RUBBER BACK SHAG CARPET
Compare at \$7.00
\$4.99
sq. yd.

KITCHEN CARPET
WITH RUBBER BACKING
SEVEN COLORS
\$3.99
sq. yd.

VINYL Asbestos FLOOR TILE
45.50 FT. BOX
\$5.99

CERAMIC TILE
WALL OR FLOOR
49¢
sq. ft.

LINOLEUM RUG
9x12
\$10.95

FREE ESTIMATES—EXPERT INSTALLATION

SC enrollment down; but some gain

Official enrollment figures released by Registrar Russell S. Bogart show a small decrease in the number of students at Wayne State College from a year ago, but the percentage of resident, female and part-time students continued to grow this fall.

Enrollment at the college reached 10,034 students, a decrease of 130 from 1975. The total includes 7,147 credits for students (down from 7,147 in 1975) and 2,887 credits for non-students (down from 2,890 in 1975).

The total number of credit hours taken at WSU this fall is 63,233. It is down 2,223 from the 65,456 credit hours recorded in 1975. The

figure is also 10,624 hours below budget projections, and is a major factor in the college's falling nearly \$50,000 short of anticipated income for the current fiscal year, Bogart said.

The percentage of residents among semester-hour students this fall is up one point to 76 per cent. Resident students are those living in the Clarensville, Garden City, Lansing, Northville and Farmington school districts. The percentage has grown steadily since 1972.

Female students at the college also gained a point to 49 per cent among semester-hour students. The corresponding figure for 1975 showed male students about

59 to 41 per cent.

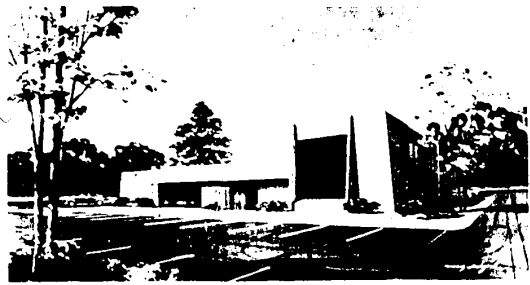
Part-time students increased two points to 42 per cent of total enrollment, with the average student carrying 8.51 semester hours of credit.

One aspect of growth among semester-hour students reported by Bogart is in health career courses. Schoolcraft this fall has the equivalent of 131.3 full-year students in this area, compared with 122.5 last fall.

Liberal arts leads all other areas in enrollment by credit hour with 36,666 hours. It is followed by vocational, 12,125; business, 11,543; and health careers, 4,071.

FREE GIFTS

LAST 6 DAYS
OUR NEW OFFICE CELEBRATION
NOW IN SOUTHFIELD • LANSEY at 11 MILE ROAD



SURETY WELCOMES YOU to our NEW HOME OFFICE as we know you welcome us to SOUTHFIELD. This beautiful, modern savings facility is now open to serve you. We have had the privilege of already greeting and serving hundreds of your friends and neighbors. Here you will receive all of our financial services as an established and progressive savings institution. Make this your convenient center for financial needs. Enjoy with us this carefully planned service building of architectural distinction, enhanced by an impressive brick facing with decorative landscape plantings. We hope to add pride to the highly held opinion Southfield townpeople hold of their pleasant and prestigious community. Plan your visit now — take advantage of our opportunity to offer you the highest savings rates available in Michigan. Let us grow together with profit and progress.

Handcraft a wall... beautiful enough to sign.

A colonial craftsman's signature reflected his pride. He did-in-his-hand created durable beauty from basic materials—and signed proudly. Participate in this great American tradition with WEYERHAEUSER plywood and paint.

Summit Brass®
\$5.88
4x8

More \$4.99 per just in...
Weyerhaeuser

Attic Insulation Saves YOU Money

6" x 15" Roll
40 sq. ft. with foil
\$7.69 roll

We also stock 24" rolls

Cash & Carry

Weyershaeuser Fiberglas 6" Attic Insulation

4x8 LAUAN PLYWOOD

| | |
|------|---------|
| 1/4" | \$6.49 |
| 1/2" | \$14.88 |
| 3/4" | \$21.88 |

- Other sizes available
- Excellent stock takes natural finish

• New shipment
• Premium Quality

Pouring Insulation

mic type
\$2.88 bag

CASH & CARRY

COVERS 19 SQ. FT. 2" THICK

7 Foot Furring

| | | |
|-------|--------|--------------|
| 1"x2" | \$3.50 | bundle of 10 |
| 1"x3" | \$3.92 | bundle of 8 |

Dry bright stock
Excellent for behind basement panels

STUDS

KILN DRIED

| | |
|---------------------|----------|
| 2"x4"x6' | 69¢ each |
| Kiln dried 2"x4"x7' | 99¢ each |

- STUD GRADE
- STORED UNDER COVER
- YOU MAY SELECT YOUR OWN

REPLACE YOUR OWN BIFOLDS WITH... FULL LENGTH MIRROR SLIDING DOORS

48" x 80"
Opening 2 Doors
\$78.88

60"...Complete with gold anodized metal
\$92.00

72"...Complete with gold anodized metal
\$108.00

SALEM LUMBER CENTER

30650 PLYMOUTH ROAD

Monday through Friday 9 a.m. to 5 p.m. Saturday 9 a.m. to 4 p.m. Closed Sunday

FOR DEPOSITS OF \$200 OR MORE

- A.) Westclox Dunmar Drawee Alarm — Dials striped with gold color floral and bells design. Framed by woodtone color case. Lighted dial, drawee feature.
- B.) Pancho Gonzales Tennis Balls — Spalding's famous tennis ball. Uniform size, weight and rebound make them ideal on all surfaces.
- C.) Cannon Blanket — Lightweight warmth in 100% polyester blanket. In pink, blue, gold or green. Versatile 72x90 size with 4" nylon binding.

FOR DEPOSITS OF \$1000 OR MORE

- D.) General Electric Home Sentry Plug In Timer — Turns lights and appliances on and off automatically once every 24 hours. Plugs directly into convenient outlet.
- E.) General Electric AM Miniature Portable Radio — A fantastic little music, weather, news and sports maker that you can take anywhere.
- F.) Corning Ware — Two 2 1/2 cup petite pans with plastic covers and handle. In the popular spice a little pattern.

FOR DEPOSITS OF \$5000 OR MORE

- G.) Morgan Silver Dollar — A superb gift or keepsake, all coins dated in the 1800's. Unrecalculated.
- H.) Times Watches — Popular styles for men and women. Easy to read, unbreakable, manproof, stainless steel back, base metal bezel, sweep second hand.
- I.) Norelco Flame Fighter — This B and C type fire extinguisher protects home and family from grease, electrical, oil paint or gasoline fires. Antique white with easy mount wall bracket.

Limited Time — Ending November 19

YOUR MONEY WILL EARN!

5 1/4% 6 1/2% 6 3/4% 7 1/2% 7 3/4%

FEDERAL REGULATIONS REQUIRE A SUBSTANTIAL INTEREST PENALTY FOR EARLY WITHDRAWAL FROM CERTIFICATE ACCOUNTS

Surety brings you the highest earnings... Use the savings system most satisfactory and profitable for you. You can be sure of the highest interest earnings on any plan you select. Regular passbook savings now earn 5 1/4% annually paid from day of deposit to day of withdrawal. Certificate accounts are also available at four highest interest paying rates with different maturities. We will be glad to give complete details on the account system most beneficial to you. Compare... then prepare to save at Surety.

Your Savings Account Insured to \$40,000. Compounded Quarterly

NEW SOUTHFIELD HOME OFFICE • LANSEY ROAD N. OF 11 MILE ROAD

OFFICE HOURS: 10 a.m. to 5 p.m. Monday thru Thursday — 10 a.m. to 8 p.m. Friday

SURETY FEDERAL SAVINGS

Closed Holiday — November 11th.