



The Lively NEEDLE



Belt accentuates ethnic look

Now that Yves Saint Laurent has decreed that the folk look is high fashion I find that I look at ethnic costumes with a

new fascination. And they were certainly on display at the International Institute Bazaar. Embroidery ranged from the fine, intricate cross stitch of the Ukrainians to the freer, creaky work of the Estonians.

The lace demonstrations were intriguing and I love the name of the group who sponsored the exhibition. They call themselves the Old Laces.

In the midst of it all I met one of the most sparkling senior citizens that I've ever come across. Mrs. Helme Toomaste



By
MARY KAY
DAVIS

is Estonian and a pearl among embroiderers. Pearl, in fact, is what her name means in English. She has twice as much pep as many of us half her age and like a fine wine, she's aged gracefully.

Mrs. Toomaste taught art in Estonia and still teaches embroidery today. She finds particular satisfaction in working with groups of senior citizens.

The costumes of her country are often decorated with layered bands of wool embroidery worked in bright colors. Counted thread multi-mix with cross stitch and pulled thread or "peasant" lace.

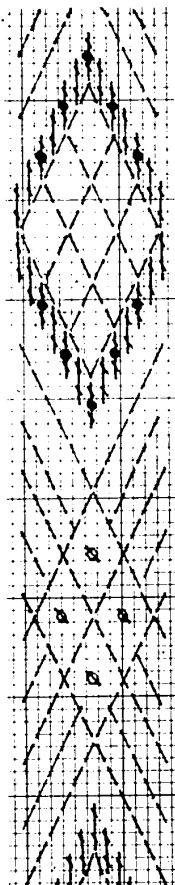
These bands of embroidery encircle skirts, belts, cuffs and collars. They also outline vests and hats.

Helme was kind enough to let me adapt this woven belt pattern from southern Estonia.

For embroiderers, the stitches used are the hankkitch, black and French knots. Work them on a skirt, a belt or a blouse of evenly woven fabric. Count your threads as you go and the pattern advances quickly. These motifs also would lend themselves beautifully to blackwork.

Needlepointers would do well first to fill in the whole belt with basketweave in a background color. Then hankkitch and French knot over the background. The texture and clarity of the design will be crisp.

And you won't have to fill in the background later, which might be difficult. Have fun bringing the ethnic look to your wardrobe. And many thanks to Helme for sharing her pearl with us.



- = Color #1
- = Color #2
- = French knot - color #1
- = French knot - color #2

echo park school

Kindergarten a.m. or p.m.
Full Day Program
Preschool 2½ to 5 — a.m. or p.m.
Mother-Toddler Program
ENROLL NOW 646-5590
4275 Echo Park Road, Bloomfield Hills

Introducing

LUNA-TIC®

New Space-Age Abrasive Cleanser

Wipes away calcium and mineral deposits, water stains and grimy build-up on glass, chrome and porcelain tile without a scratch... fast and easily. Luna-Tic "Cleans like Crazy." Wipes away the build-up like nothing you have ever tried before. Renews without a scratch. It's odorless, too.

- **Totally Inert Cleanser**
- **Over 20,000 Satisfied Customers**
- **Full Money Back Guarantee**
- **\$2.50**
- **Big 3.53 Oz. Jar**

Mail your check or money order to
LUNAR INDUSTRIES, INC.
P.O. Box 5320
Orchard Lake, Mich. 48063

If not satisfied return
in two weeks for full refund.
Only \$2.50 post paid.

Name _____
Address _____
City _____ State _____ Zip _____

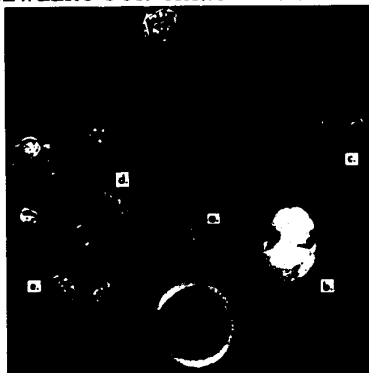


ANTIQUE JEWELRY FOR CHRISTMAS...

... has to be seen to be appreciated!

- a. Chain and slide with Antique Pocket Watch. Complete \$300. Pieces sold separately.
- b. Antique Rose-cut Garnet Cameo \$125
- c. White gold Diamond Pin. Total diamond weight 0.75 0.75 ct. \$650
- d. Antique Stick Pins from \$40
- e. 14 Karat Yellow Gold Slide Bracelet Shown, \$540. Others from \$90.

We also carry a fine selection of one-of-a-kind estate pieces.



Fredrick Jewelers
of BLOOMFIELD HILLS

Christmas Hours
10 a.m. - 11 p.m.
Sat. 11 a.m. - 5 p.m. Sun. 12-5

869 West Long Lake Road, just east of Telegraph... 646-0973

Just in time for Christmas giving...
TWO LOCATIONS TO SERVE YOU!

- Creative needlepoint
- Hand-painted canvases for pillows, pictures, belts, purses, ragquilt covers
- Books and kits
- Complete line of Bernat rugs and yarn
- Beginning and advanced — day and nighttime classes.

the stitching post

CUSTOM NEEDLEPOINTE

1901 W. Big Beaver Rd.
(on Cambridge — Lincoln Hwy.)
4841-2996

FRANKLIN
27110 Franklin Rd.
(at the corner)
626-3090

Celebrate your Christmas Party at the Machus Red Fox

Telegraph at Maple, Bloomfield

Beautiful

Banquet

Facilities

Luncheon

Cocktails

Dinner

Easily one of the Nation's finest restaurants
recommended by Holiday Magazine-72-74-75-76-77

Gold Menu Award 70 thru 76

famous MACHUS SALAD

Fresh seafood flown in daily from Boston — excellent wines.

Reservations 626-4200

Open daily 11:30 a.m.
Sundays 4 p.m.

Stewart Glenn offers these beautiful Queen Anne chairs at a special price because one of our quality suppliers has used their discontinued fabrics. \$219 each, 2 for \$399. Immediate delivery while stock lasts.



Traditional designs with Queen Anne leg and wing treatment, these chairs will add a note of luxury and elegance to today's home. Beautifully upholstered in your choice of velvets or prints. Save \$54 to \$73 per chair. \$219 each. Buy in pairs and save. 2 for \$399.



HIGH BACK WING CHAIR Upholstered in quality velvets in your choice of Rust, Green, Mustard, or Blue. 40" high. Save \$48 to \$48 on each chair \$219 ea. Buy in pairs and save. 2 for \$399.



LOW BACK CHAIR Can be used alone or paired up with the High Back chair shown at left. Your choice of colors. Velvet covered. Save \$51 to \$77. \$219 each. Buy in pairs and save. 2 for \$399.



Two solid Cherry Tables to complement the chairs shown above. Both are specially priced. While they last. 46" Drop Leaf Cocktail Table. Reg. \$173. Specially Priced \$149. Drop Leaf End Table with one drawer. 20" x 26". leaves down. Reg. \$159.95. Specially Priced \$129.



STEWART GLENN CO.
"YOUR REAL SERVICE STORE"
has no extra charge for:
• Careful Inspection & Set-Up
• Courteous Delivery Service
• Generous Stairside Parking

Ask our Interior Designers to help you with your decorating problems.
Use our 4 Pay Plan (no interest) or use your Master Charge or BankAmericard.