

## Regional Roundup

**FEDS INVESTIGATE OFFICIAL**  
Federal investigators are actively looking into allegations that Southfield City Councilman Nelson Chase may have accepted favors from local developers.

"The FBI is conducting an investigation of allegations of wrongdoing in the city of Southfield which may be in violation of federal statutes," said Robert Knapp, FBI spokesman.

At least three Southfield officials have been contacted by FBI agents concerning Chase's activities.

One elected official said agents raised questions concerning as many as 10 separate allegations ranging from conflict of interest involving liquor license applications to receiving gifts from local developers.

To date, no federal charges have been brought against Chase, an attorney, as the result of the investigation.

### SECURITY SAFEGUARDS

A system to account for children absent from school has been launched at West Bloomfield's Doherty Elementary School, and Ealy Elementary will start a similar checking procedure Tuesday.

The increased safeguards against missing youngsters follows on the heels of Friday's discovery of the body of a 10-year-old girl in nearby Franklin, the fifth youngster killed in 13 months.

### NEW CLERK

Orchard Lake has hired Ann Bensch, former Redford Schools employee, as its new city clerk.

Mrs. Bensch of Waterford started work Monday.

She has 19 years experience in "all phases of office work" but this is her first municipal job.

### POLICE CHIEF QUILTS

After months of behind-the-scenes battling, the Farmington Hills City Council has accepted the resignation of Police Chief Ronald Holko. He will leave the department March 1. Holko has been under pressure for the last year from City Mgr. George Majors who bowed to police and fire personnel's displeasure with their boss. The administration is seeking a replacement.

### Campaign bill signed

Gov. William Milliken has signed legislation regulating campaign financing practices and providing partial public funding of campaigns for the governorship.

The bill includes:

- A requirement that records be kept of all political contributions and expenditures.
- A requirement for reporting the source of contributions of more than \$50.
- A prohibition against direct corporate contributions to candidates.
- Specific authorization for businesses and trade associations to establish political action committees for the purpose of making contributions to candidates by using funds volunteered by stockholders and non-

hourly employees.

• The establishment of a state campaign fund to provide public funding of up to \$750,000 in a general election and \$855,000 in a contested primary for gubernatorial candidates.

• An overall spending limit of \$1 million on a gubernatorial candidate in a primary or general election.

### Seminar set on teaching math

A conference to help teachers learn how to tailor mathematics instruction for individual students is planned for Jan. 29 in the Student Center Building, Wayne State University.

Sponsored by the Detroit Center for Professional Growth and Development, the conference, costing \$3, will be from

9 a.m. to 1 p.m. Registration will begin at 8 a.m.

James Heddens, professor of education who is nationally known for his work in the Kent State mathematics clinic and as a textbook author, will be the keynote speaker.

Advanced registration

### Retardation center open

The Oakland County service center houses the \$2.4 million Mental Retardation Center. The center is operated by

the county Community Mental Health Services Board. A number of programs for the retarded are provided.

## WIN the OLD TIN LIZZIE

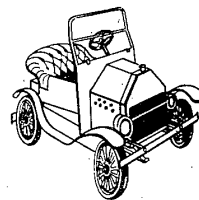
COME IN AND  
REGISTER NOW.  
YOU MAY WIN A

1910 Ford half-scale

3 h.p. engine

Drawing Saturday  
February 26, 1977

Our new addition makes us  
Michigan's largest  
display area for lighting,  
bath and home decor.



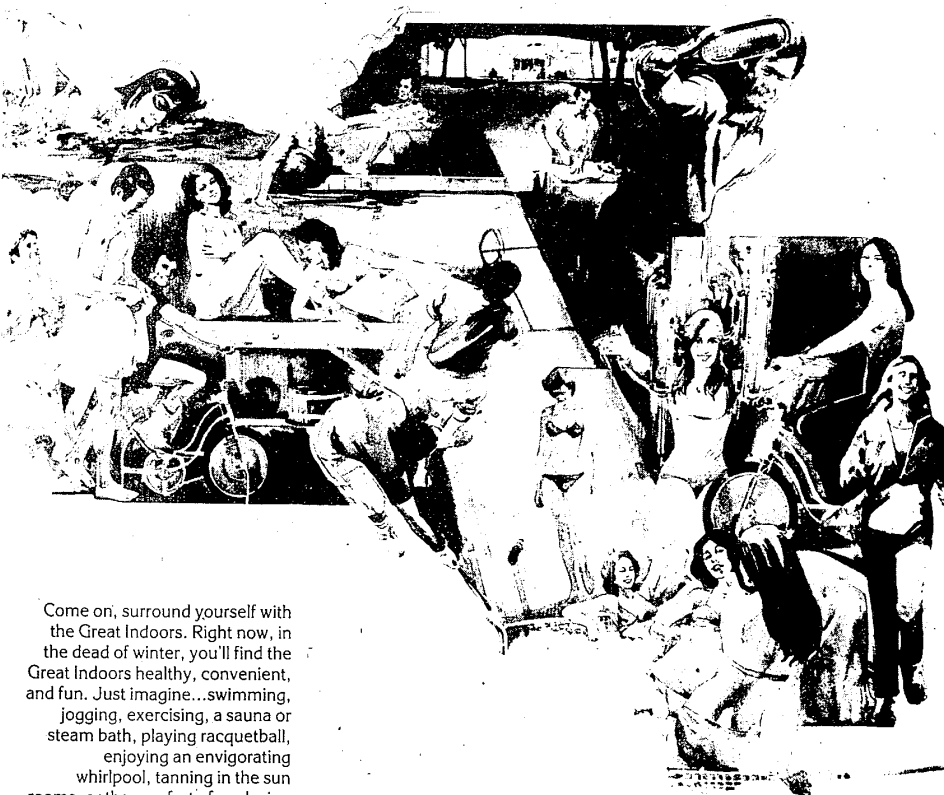
Custom  
Gallery  
& Lighting  
Studios



355-4550

24200 TELEGRAPH (BETWEEN 9 & 10 MILE Rd.) SOUTHFIELD

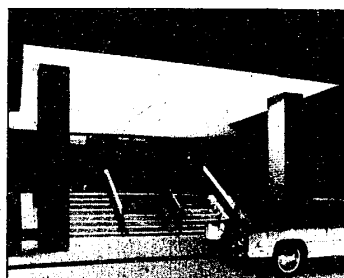
# NOW OPEN. THE GREAT INDOORS



Come on, surround yourself with the Great Indoors. Right now, in the dead of winter, you'll find the Great Indoors healthy, convenient, and fun. Just imagine...swimming, jogging, exercising, a sauna or steam bath, playing racquetball, enjoying an invigorating whirlpool, tanning in the sun rooms, or the comfort of a relaxing massage as you acquire your new look. The Great Indoors - it's just one of the many benefits of the Vic Tanny Bloomfield Executive Health & Racquet Club.

Need a few more?  
Call, or visit us soon.

**MEN...WOMEN  
CALL NOW.  
855-2300  
RATES INCREASE  
FEBRUARY 1st.**



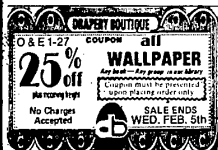
**VIC TANNY  
BLOOMFIELD  
EXECUTIVE  
HEALTH &  
RACQUET CLUB.**

LOCATED AT  
6420 TELEGRAPH ROAD,  
JUST NORTH OF MAPLE



**20% OFF  
CUSTOM DRAPERIES  
STYLING WITH IMAGINATION**

Styling with Imagination affords the look of window decor with the "Created Look" of CUSTOM DRAPERIES from Drapery Boutique's fine library of decorative fabrics. Sale Priced with 20% Savings.



RIVERLAND SHOPPING CENTER  
43430 VAN DYKE  
STERLING HEIGHTS, MICH. 48078  
313-739-1222

FARMINGTON TOWN SHPG. CTR.  
27041 GRAND RIVER  
FARMINGTON, MICH. 48024  
313-478-3133

ORCHARD & 14 MILE CENTER  
30888 ORCHARD LAKE ROAD  
FARMINGTON, MICH. 48024  
313-426-4312

HOURS: 9:30-6:00 Daily  
Thurs: 9:30-8:00