

Dressing Your HOME



Walls—a room's setting or its focus

What is done with the walls of a room can either create a setting for the furnishings and objects of art or set the character of the room itself.

Painted walls in either light or dark colors will give more play to the furnishings, while a patterned wallpaper will become as important as what's in the room.

There are such beautiful fabric-like wallpapers with matching fabrics on the market now that I find it hard to settle on just plain painting.

I recommend for today's fashion that matching fabrics be used in several ways within a room, not just on the windows.

To find the right pattern, properly scaled to the room size and coordinated with other fabrics and colors, obtain as large samples as possible of both wallpaper and fabric. The average store does not carry quantities of samples but they can be ordered at a small cost. If you are



LAURETTA REGAN

working with a decorator, samples are always available. Because the fabric will be draped and thus acquire different characteristics, it is equally important to choose it with care.

You'll find you won't tire of wallcovering chosen correctly.

Should you have a hankering for a brick wall, use caution on the amount of space you cover and the color of the brick. I recently saw two model homes done with brick treatment. One had a Spanish motif for furnishings, so a brick with varying dark tones was used on a large wall expanse. For my taste it was overpowering and gave the feeling of the walls closing in. A smaller amount of brickwork should have been used and a light tone.

The other model home using brickwork went in the opposite direction and chose stark white. Once again, it was too much.

A wood paneled wall is easily achieved by mounting the strips of paneling on a framework and applying to the wall. It is easily removed and can be used elsewhere.

Workshop to explore moral leadership

Directions that concerned American Catholics can take to provide moral leadership in the United States will form the substance of the first of a series of six special workshops sponsored by the Center for Pastoral Studies at St. Cyril and Methodius Seminary, Orchard Lake.

The workshop, which will compare and analyze pronouncements by American bishops on moral life and resolutions of the National Conference of the "Call to Action" Committee, will be held from 10 a.m. to 4 p.m. Wednesday Feb. 16 in the Dombrowski Fieldhouse multi-purpose room on the seminary campus.

The campus is located northwest of Detroit at Orchard Lake and Com-

merce roads in Orchard Lake village. The Rev. Anthony Kosnik and Mrs. Jane Wolford Hughes will conduct the workshop. Fr. Kosnik is the dean of the seminary and Mrs. Hughes is director of the Detroit Archdiocesan Institute for Continuing Education and a member of the "Call to Action" Committee.

The fee for the workshop is \$10. For registration information, contact Carl L. Middleton, the director of continuing education at Orchard Lake, 682-1285.

According to Middleton, the documents that the workshop will study present a challenge to American Catholics to provide the moral leadership that America is hungering for.

Renaissance consultant is speaker

Mildred Custin, consultant for the Renaissance Center of Detroit in the planning of its three-level shopping mall, will be speaker for the Women's Economic Club luncheon meeting at 11:45 a.m. Tuesday in the ballroom of the Veterans Memorial Building.

Ms. Custin is head of a New York firm which offers consultation in the retail and fashion business, and her talk will be titled "Promoting Women and Retailing."

Tickets priced at \$5.25 for members and \$6.25 for guests should be reserved by Feb. 11 by sending checks to 606 Michigan Building, Detroit.

Atlantic Drapery Shoppe

Waverly
and Bloomcraft
Custom Ordered Spreads

Drapery Sale
Labor \$4.00 per panel

Special prices available
on Drapery, Slipcover
and Upholstery fabrics.
Largest selection of fabrics,
fringe, tassels and
trim in Michigan.

Labor Special
on
Custom Slipcovers

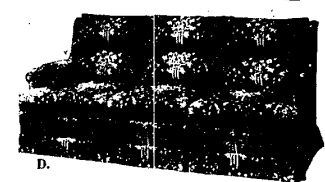
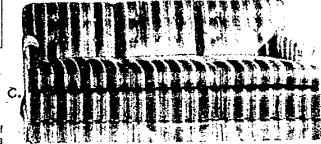
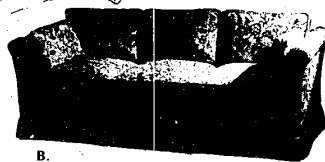
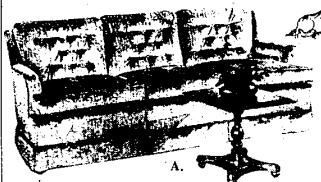
Chair - \$32⁹⁰ — Sofa - \$42⁹⁰

360 E. Maple, Birmingham

647-2020 647-0721

WIGGS MID-WINTER FURNITURE SALE

What's your mood? Choose
your style . . . length . . . fabric . . .
from our Bloomfield Collection,
Mid-Winter Sale Priced!



A. Magnificent three-cushion Sofa with gently flared arms. Available in three sizes . . . 55" Loveseat, 73" and 84" Sofas . . . Sale from \$464 to \$850 depending upon size and fabric.

B. Tufted-arm Sofa with reversible cushions and matching bolsters. Available in five sizes . . . 60" Loveseat, 72", 84", 92" and 100" Sofas . . . Sale from \$484 to \$999 depending upon size and fabric.

C. Tight-back cushion Sofa with button-treatment. Available in six sizes . . . 60" Loveseat, 72", 76", 84", 92" and 100" Sofas . . . Sale from \$487 to \$1019 depending upon size and fabric.

D. Pillow-back style Sofa with matching bolsters and reversible seat cushions. Available in 63" Loveseat and 86" Sofa . . . Sale from \$583 to \$1066 depending upon size and fabric.

E. Tufted-style Sofa has loose pillow-back, reversible cushions and matching bolsters. Available in 84" Sofa length only . . . Sale from \$624 to \$817 depending upon fabric selection.

F. Dramatic, flared tufted-arm style accents the eight loose pillows that enclose the back. Available in 85" Sofa length only . . . Sale from \$742 to \$972 depending upon fabric selection. Also available as a sectional at Mid-Winter sale prices.

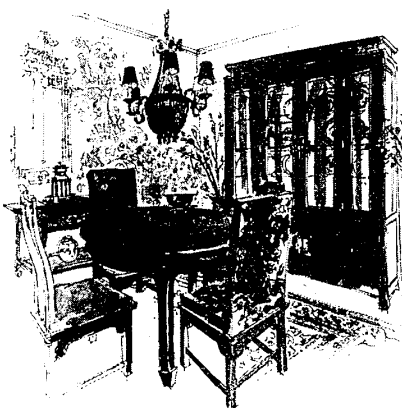


4080 TELEGRAPH RD. (at Long Lake Rd.) BLOOMFIELD HILLS • 644-7370

From our Far East Collection: Oriental Dining Room

This dining room grouping was inspired by ancient Chinese decor. A variety of sophisticated finishes is available. Shown: medium, lustrous semi-gloss which affords superb clarity & depth. Cordovan (reddish cast ebony) permits the grain-structure to emerge. All incorporate olive ash veneer for two-tone variations. (A few painted finishes are available.) Choose from over 80 pieces.

- 30 1/2" x 48" Extension Table (opens to 84") . . . Sale \$550
- Slat-back Side Chair . . . Sale from \$120
- Upholstered Hostess Chair . . . Sale from \$179
- 18" x 16 1/2" x 8 1/2" China . . . Sale \$1099
- 40" x 18" Mobile Server . . . Sale \$425

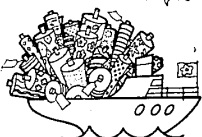


We have always lived in a home with a wood burning fireplace. We have recently moved to a home without a fireplace. How can we install one without a major construction job?

It's not a new idea but one that has been greatly improved upon—portable fireplaces. There are companies that manufacture a wide selection of these in varying styles and sizes. You decide what wall and room you wish to have your fireplace. It has to be mounted on a fireproof base, also near an outside wall where the chimney exhaust can be placed. It is a relatively easy job, not costly. However, for maximum safety, I would advise having the company install it.

—L.R.

Our ship is in!



And it's filled with fabrics from India, linen casements from Belgium, prints from England, & brocades from European mills. Save up to 50% with seconds!

CALICO CORNERS

4735 S. Telegraph, Bloomfield Hills, Fe - 740
25000 Little Mack, Ste. 400, Detroit - 775-0070

Where neatness counts

count on

Decorá Closet Experts

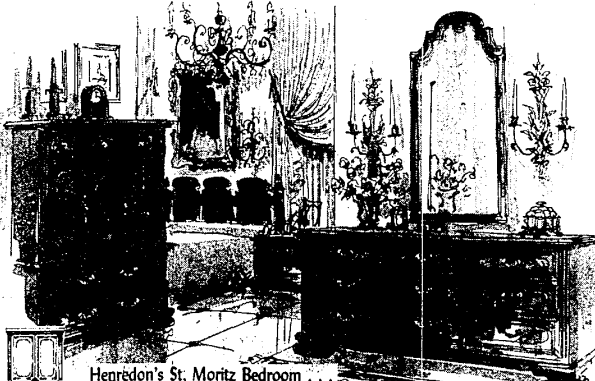
You can double or triple your closet space and have everything at your fingertips with our professionally engineered closet systems. You know you can count on us!

Call in for a free closet consultation.

Designed by: ROBERT BUDMAN CO.

"You can hang it all on us"

CALL 968-2525



Hegredon's St. Moritz Bedroom

Enjoy Mid-Winter Savings on every piece of this fine quality, meticulously-crafted Hegredon St. Moritz bedroom. Never before have such values been offered on beloved Hegredon quality furniture. The only distressed fabric is complemented by custom brass trim. In stock for immediate delivery. Queen-size Headboard, Sale \$225 . . . Twin Dresser, Sale \$99 . . . Mirror, Sale \$175 . . . Night Stand, Sale \$217 . . . Chest, Sale \$569 . . . Armchair, Sale \$295.

Open Monday, Tuesday and Friday evenings until 7:00 P.M.