

New energy code to affect architecture

Michigan's new energy code, which goes into effect June 22, may well mean the end of cathedral ceilings and the broad, Florida-type glass areas often found in today's housing.

That is the reading of the Builders Association of Southeastern Michigan from preliminary information on application of the code to homes and other heated buildings, all of which are affected.

For home builders in the Detroit metropolitan area, where winter temperatures normally are moderate, the code will have its major effect in the tighter control over design and its effect on heat loss. Largely, homes being built here

today already have insulation characteristics adequate for the code.

But under the code, every proposed home will have to meet individual analysis which relates the number and size of openings, and other factors bearing on heat loss in winter and heat gain in summer, to the amount of insulation and the conditions in the area where it is to be built.

Details on these matters must be incorporated into the plans and specifications and validated with calculations before a building permit will be issued, according to a spokesman for the Michigan Construction Code Commission in Lansing.

THE MICHIGAN Energy Code consists of the American Society of Heating, Refrigeration and Air Conditioning Engineers (ASHRAE). Because the formulas are complex, the

construction code authority currently is drafting a handbook outlining requirements in simple terms for building officials, design firms and construction contractors. The handbook will not be

available until April, according to Robert Cappelletti, chief of the mechanical division of the code commission, which works under the Michigan Department of Labor. However, Cappel-

letti said that the National Mineral Wool Insulation Association, 382 Springfield, Summit, N.J. 07901, has published a \$1 booklet explaining the new code.

New section now open...



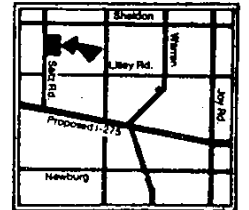
Parkwood Estates

3, 4 & 5 BEDROOM COLONIALS, RANCHES TRI-LEVELS & QUADS



Parkwood Estates is located in the country atmosphere of Plymouth-Canton, which offers you the convenience of being close to shopping areas and recreational facilities as well as quiet surroundings. This area also has a fine school system to offer along with many other advantages.

Priced from...
\$46,990 to \$55,990



PLYMOUTH SCHOOLS DISTRICT

BUILT & DEVELOPED BY...
NORMAN LONG BLDG., INC.
& **HUNTLEY HOMES, INC.**

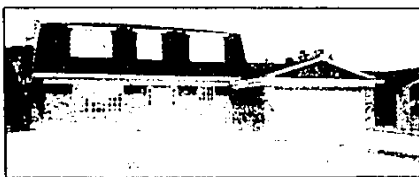
MODELS OPEN:
1 to 8 Daily and Sunday
Saturday 1-6
(Closed Thursday)

GOLD MANOR ESTATES SUBDIVISION

ONE OF LIVONIA'S FINEST LOCATIONS

NEED IMMEDIATE OCCUPANCY?

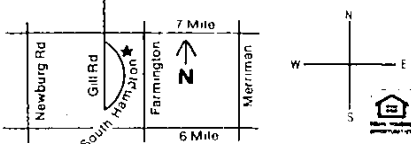
WE HAVE 3 AVAILABLE 60 TO 90 DAYS



- RANCHES..... \$60,950 & up
- QUAD-LEVELS..... \$62,950 & up
- COLONIALS..... \$65,950 & up

MODELS AVAILABLE:
478-2368

If no answer Call 261-4200



BUILT BY- **THOMAS BUILT HOMES**

OPEN 1 to 6 DAILY

SALES BY- **Century 21**
Hantford 5
478-2368
Every Office Independently Owned



PLACE ON THE PARK



PLACE ON THE PARK CONDOMINIUMS

Oakland County Lakes area

Impressive Colonial style "homes" nestled amid towering pines and stately walnut trees. Our 1, 2, and 3 bedroom condominiums include the quality and privacy you usually find only in a more costly community. Features include attached garages, central air, complete kitchen appliances and full basements with most townhouses. Place on the Park is ideally located with 39 lakes within a 5 mile radius, and close to schools and shopping.

MODELS OPEN:
Sun. thru Thurs. 11-6
(Closed Fri.-Sat.)

Priced from \$25,900-\$37,900..... IMMEDIATE OCCUPANCY!

Please Call...

THOMPSON-BROWN REALTORS
SALES AGENT

624-7221

