

BLOSSOM



...at GERALD'S

**FRANKLIN**  
3277 Franklin Rd.  
626-7171 & 626-7178

**NORTHVILLE**  
41012 Five Mile Rd.  
459-9800

**WAYNE**  
313 South Wayne Rd.  
721-5230

**DEARBORN**  
1034 Monroe  
274-9200

# no sighs over size!

When it comes to suits and sport coats at HARWOOD CUSTOM TAILORS, the question of your exact size is never out of the question!

## THINK ABOUT IT!

And that holds true for

- BUMPY MEN • PEAR SHAPED MEN
- TOP HEAVY MEN • BOTTOM HEAVY MEN
- BLIMPY MEN • SHRIMPY MEN
- SKINNY MEN • CONVEX MEN
- CONCAVE MEN • AND ALL OTHER SHAPED MEN, INCLUDING PERFECT



# Harwood

Custom Tailors & Designers  
908 WEST HURON at TELEGRAPH  
PONTIAC 681-2300

(Continued from Page 32)

He made a fashion statement, and it's one we'll all be wearing. Not the costume gypsy or rich peasant, but softer, fuller skirts, easy blousy tops and scoopy peasant necklines. The influence is to be seen everywhere.



Bill Blass's one-shoulder T-shirt teams with a matching cardigan and a black cotton slit-front skirt from France.

## WAITING

Plenty of sportswear is in the spring and summer picture for ladies-in-waiting.

Novelty pre-wash jeans and shorts, gauchos and T-shirts, tunics of all types are the outstanding offerings at the Expectation Shop, at 141 West Maple in Birmingham.

Drawstring pants are becoming a new look in maternity wear, and they have the great advantage of being just as useable after the baby arrives.

And, if your waiting time takes you into the hot days, you'll find one of the new smock-top sundresses an absolute must.

In materials, gauze is out but the dish-towel look you get with mesh-type fabric is very much in. Terrycloth has become a must for everything from beach apparel to warm-up suits.

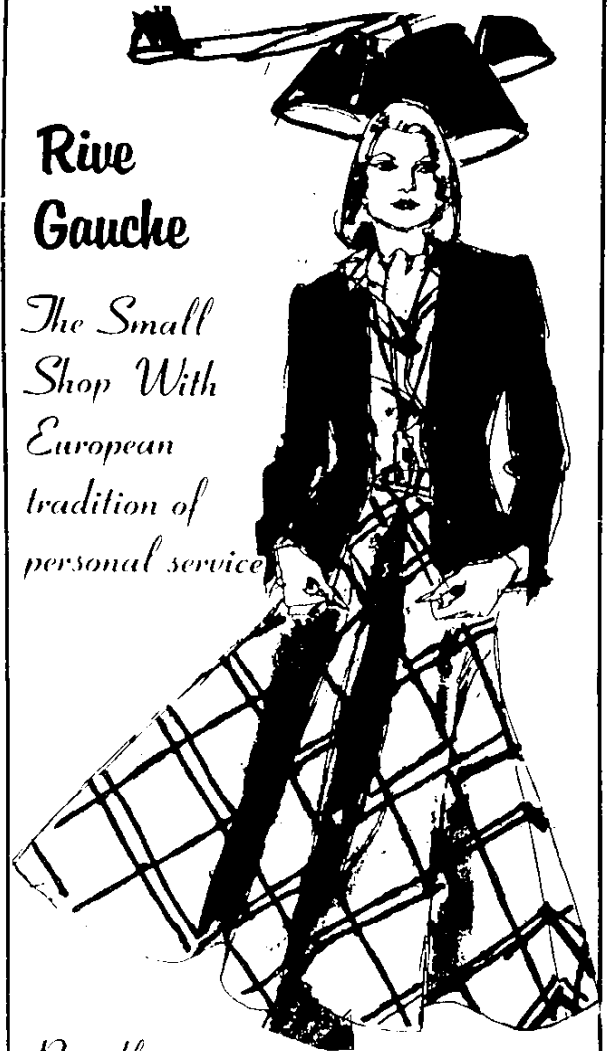
Linen-like fabric is seen a lot, especially for pantsuits to carry through the summer.

Maternity styles, like the rest of the fashion range, will go bright and soft for summer. Sportswear takes both the bright shades of orange and yellow and the muted hues that go so well with draped fabrics.

More than ever this year you can wait in high fashion.

## Rive Gauche

*The Small Shop With European tradition of personal service*



*Proudly presents its New Spring Selection of European and American Designers at very affordable prices*

*Mon thru Sat.*

*10:30-4:30*

*2399 Coolidge between 11 and 12 Mile Rd.  
Berkley 546-5504*