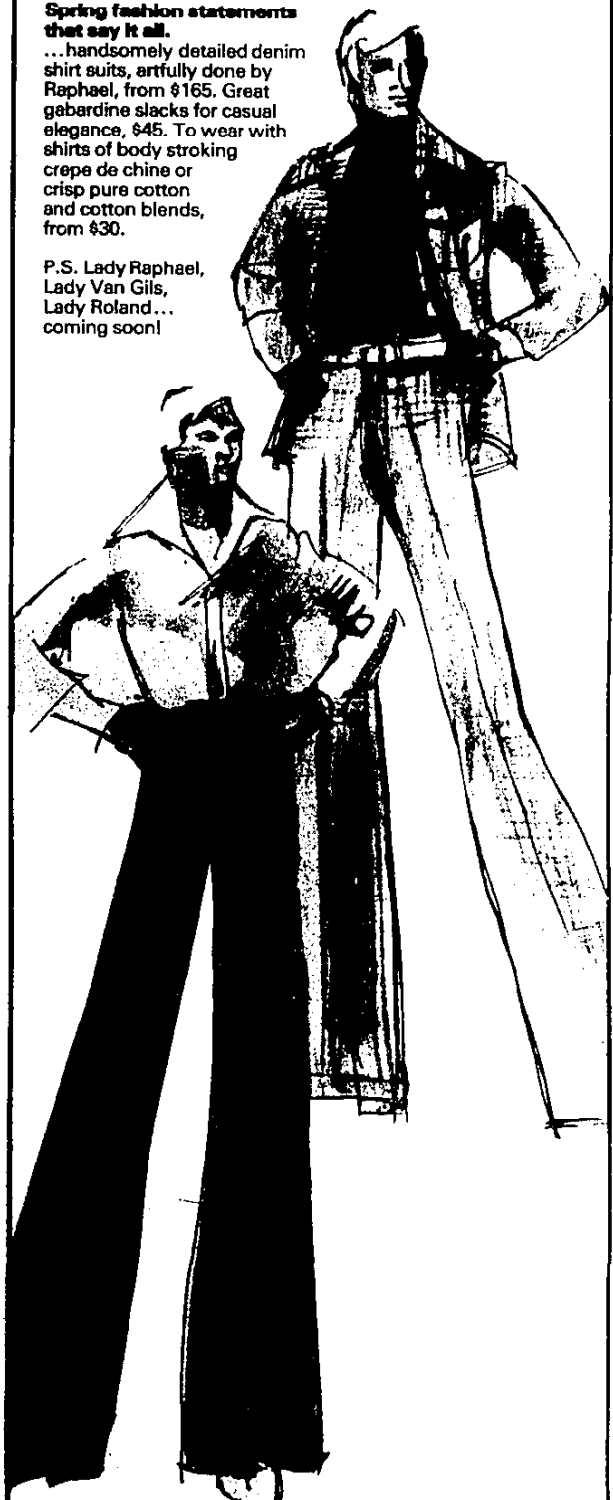


Spring fashion statements that say it all.

...handsomely detailed denim shirt suits, artfully done by Raphael, from \$165. Great gabardine slacks for casual elegance, \$45. To wear with shirts of body stroking crepe de chine or crisp pure cotton and cotton blends, from \$30.

P.S. Lady Raphael, Lady Van Gils, Lady Roland... coming soon!



dh
doug hoffman LTD

New Orleans Mall
15600 West Ten Mile Road
Southfield, Michigan 48075
567-3313

115 South Woodward Avenue
Birmingham, Michigan 48011
642-5630

Mon., Thurs. and Fri. 9:30-8:30
Tues., Wed. and Sat. 9:30-5:30

MAJOR CREDIT CARDS ACCEPTED

SOFT

Night hours are the specialty of designer John Kloss, who for a decade has been originating sexy and streamlined dusk-to-dawn wear.

In this year's collection, Kloss has updated his offerings by adding a new fabric as well as a new softness that's expressed in demure details and pale colorings.

The fabric is a stretch terry of cotton that stands alone or combines beautifully with the Antron III that has been this designer's standby for years.

The Antron is new with a lighter look, a more satiny finish and a more luxurious feel.

The color range for this collection is fresh, ripe pastels: French vanilla; frosted peach; creamy lemon; cool aquamarine; and sherbert pink. A cropped cardigan represents a fresh look. In stretch terry, it's a bed jacket, a coverup, a seductive sweater.



The cropped cardigan in velvety stretch terry tops a textured halter in terry and Antron III by John Kloss.

Spring is Here at Lady Madonna



Everything from overalls and great dresses to pantsuits and sexy evening gowns.

To help make you look the way you feel

Beautiful!

Light, pleated, tailored softshirting in a short neckline with two pockets over matching black, mandarin-style top.

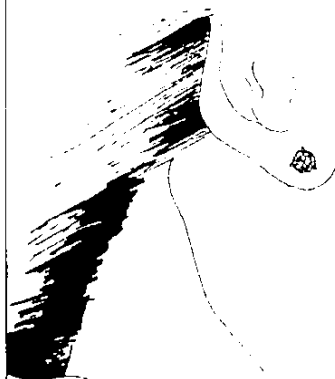
LADY MADONNA
MATERNITY BOUTIQUE
and baby madonna too!

325 S. WOODWARD (corner of Brown)
BIRMINGHAM 642-1510

Open daily 10 to 6, Thurs. & Fri. to 8:30

Another
Exclusive from
Alexander J. Bongiorno

CREATIVE JEWELER



a diamond
"pinched"
into the ear.
the absolute
minimum
of 18 kt. gold
visible.
from \$360

Northfield Financial Bldg.

Crooks Bldg. at I-75 exit/Troy

879-1180