



TAPA: MADE FOR TOURISTS

TAPA: MADE FOR TOURISTS

TAPA: MADE FOR TOURISTS

TAPA: MADE FOR TOURISTS

TAPA: MADE FOR TOURISTS

TAPA: MADE FOR TOURISTS

TAPA: MADE FOR TOURISTS

TAPA: MADE FOR TOURISTS

TAPA: MADE FOR TOURISTS

TAPA: MADE FOR TOURISTS

TAPA: MADE FOR TOURISTS

TAPA: MADE FOR TOURISTS

TAPA: MADE FOR TOURISTS

TAPA: MADE FOR TOURISTS

TAPA: MADE FOR TOURISTS

TAPA: MADE FOR TOURISTS

TAPA: MADE FOR TOURISTS

TAPA: MADE FOR TOURISTS

TAPA: MADE FOR TOURISTS

TAPA: MADE FOR TOURISTS

TAPA: MADE FOR TOURISTS

TAPA: MADE FOR TOURISTS

TAPA: MADE FOR TOURISTS

TAPA: MADE FOR TOURISTS

TAPA: MADE FOR TOURISTS

TAPA: MADE FOR TOURISTS

TAPA: MADE FOR TOURISTS

TAPA: MADE FOR TOURISTS

TAPA: MADE FOR TOURISTS

TAPA: MADE FOR TOURISTS

TAPA: MADE FOR TOURISTS

TAPA: MADE FOR TOURISTS

TAPA: MADE FOR TOURISTS

TAPA: MADE FOR TOURISTS

TAPA: MADE FOR TOURISTS

TAPA: MADE FOR TOURISTS

TAPA: MADE FOR TOURISTS

TAPA: MADE FOR TOURISTS

TAPA: MADE FOR TOURISTS

TAPA: MADE FOR TOURISTS

TAPA: MADE FOR TOURISTS

TAPA: MADE FOR TOURISTS

TAPA: MADE FOR TOURISTS

TAPA: MADE FOR TOURISTS

TAPA: MADE FOR TOURISTS

TAPA: MADE FOR TOURISTS

TAPA: MADE FOR TOURISTS

TAPA: MADE FOR TOURISTS

TAPA: MADE FOR TOURISTS

TAPA: MADE FOR TOURISTS

TAPA: MADE FOR TOURISTS

TAPA: MADE FOR TOURISTS

TAPA: MADE FOR TOURISTS

TAPA: MADE FOR TOURISTS

TAPA: MADE FOR TOURISTS

TAPA: MADE FOR TOURISTS

TAPA: MADE FOR TOURISTS

TAPA: MADE FOR TOURISTS

TAPA: MADE FOR TOURISTS

TAPA: MADE FOR TOURISTS

TAPA: MADE FOR TOURISTS

TAPA: MADE FOR TOURISTS

TAPA: MADE FOR TOURISTS

TAPA: MADE FOR TOURISTS

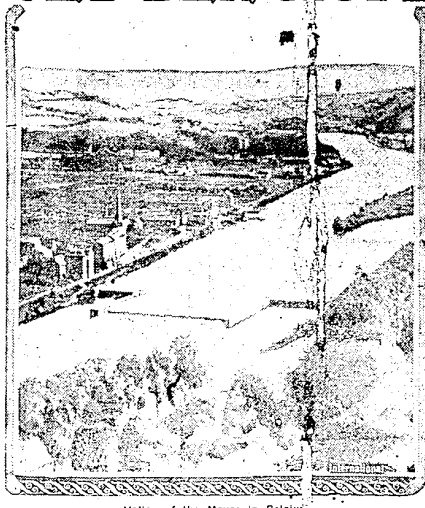
TAPA: MADE FOR TOURISTS

TAPA: MADE FOR TOURISTS

TAPA: MADE FOR TOURISTS

TAPA: MADE FOR TOURISTS

LEGENDS OF OLD BELGIUM



Valley of the Meuse in Belgium

ASKED to pluck the prettiest flowers of our Belgian folklore, I stand blinded and hesitate. What shall I choose in this bouquet, over rich in its mingling of brilliant colors and tender hues? Shall it be pearls of sacred mistletoe fallen beneath the Druid's knife; lilies grown in the shadow of convents and monasteries; roses reddened with the blood of tournaments and the carnage of battle; or, perchance, pale daisies of the fields sprung up unheeded amid the cow pasture? All equally are precious, writes Louis Lagasse de Locht in the London Times. Daughters of a fertile land sated in the course of ages by storms let loose from the four corners of the earth, are they not the expression, the poetry, the sap of love and hate, the very soul, in a word, of a people fashioned by martial blows and bathed in the sunshine of idealism.

Every Belgian is thrilled by the past. It is his staff and bread of life. Hence his love of cavalcades, joyous entries and processions, and ever recurring delight of most of our villages. Great fairs are often displayed in the ordering of these spectacles, the building of the waltz—into which Rubens and Jordans did not seem to devote their talent. And it is as if the figures of legend and history which pass through our streets had stepped down from the canvas of old masterpieces to be closer to the carresses of the crowds.

Sometimes the ceremony represents but an episode, a scene of chivalry or of mystery from the middle ages. In Bruges, suddenly awakened from its melancholy miracle of the holy blood, the triumphal escort of a prince consecrated to the conquest of the holy land moves in a rolling stream of glistening steel amid the glimmer of silk silks and precious brocades, the clashing of arms and the embrazened pen of trumpets.

At Furnes, on the last Sunday in July, the procession of "penitents" reenacts the supreme drama of all time. For weeks the city prepares for it. The actors' parts are more coveted than public honors; none are jealously guarded as hereditary rights. Through the dense crowd, pressing ever closer and closer, the revered figures pass in procession. And the Christ appears, veiled down by his cross, a living and staggering Christ, scourged till the blood runs from him. A shiver of religious fervor passes over the faithful. "Mercy!" a penitent cries aloud in pain. Every window is a garden of tapers, candles and lights whose flames flicker in the wind blowing from the sea. Sacred chants mingle with the piping of reeds, the noise of rattles and the wailing of horns. The crowd sobbs and wails and wrings its hands and falls into prayer as following the Crucified one, the penitents pass. The men in sackcloth and the women closely veiled do penance, and the sacred, torn feet bleed on the stones of the road. Perchance beneath their cloaks of burial noble ladies, whose flaxen hair and white bodies are the love treasures of this sensual and mystic Flanders, are paying the ransom of a kiss.

Monks, the bomb of the guardian saint of the British army, is the star of the year of the famous Lumeçon display which ends the procession of St. Vincent. At midday to the tolling of the great bell, otherwise heard only as a war alarm, St. George gives battle to the dragon. After a deadly combat, the dragon, according to rite, crashes down in the dust, shot through the nostrils, and the devils are chastised by the brave followers of the victorious knight. Before entering the lists the fabled "beast" flays the crowd with mighty blows of his tail. The people of Mons believe that a blow from the tail brings

Latest Markets

LIVE STOCK—DETROIT

Cattle—Best heavy steers, \$14.50; best handy weight butcher steers, \$11.00; mixed steers and heifers, \$9.00; handy light butchers, \$8.50; 8.75; light butchers, \$7.25; best cows, \$8; butcher cows, \$6.50; cutters, 6; canners, \$4.50; best heavy bulls, \$8; bologna bulls, \$7.50; stock bulls, \$5.75; feeders, \$9.00; stockers, \$7.50; milkers and springers, \$8.00.

Calves

Best grades, \$16.17; culls and heavy, \$10.15.

Sheep and Lambs

Best lambs, \$15.50; fair lambs, \$11.00; light to common lambs, \$9.00; yearlings, \$9.00; lambs to good sheep, \$4.00; culls and common, \$2.00.

Hogs

Mixed hogs, \$15.90; pigs, \$14.75; grassers, \$15.50.

EAST BUFFALO

Cattle—Fancy, \$17.75; prime shipping steers, \$16.50; best shipping steers, \$15.00; medium shipping steers, \$14.50; best native yearlings, \$15.00; 1,000 pounds, \$15.50; 1,500 pounds, \$16.00; light native yearlings, \$14.50; 1,000 pounds, \$15.00; 1,500 pounds, \$15.50; fair to good kind, \$11.50; 1,250; handy steers and heifers, mixed \$12.50; 1,250; western heifers, \$13.25; 1,250; state heifers, \$10.50; 1,250; fat cows, \$10.50; 1,100; butchering cows, \$10.00; 1,050; cutters, \$7.50; 8; canners, \$4.50; fancy bulls, \$10.50; 1,125; butchering bulls, \$9.00; fancy bulls, \$10.50; 1,125; common bulls, \$7.50; 1,125; best feeders, 200 to 1,000 lbs., \$5.50; 1,000; medium feeders, \$8.50; stockers, \$7.50; 8.25; light to common, \$7.50; best milkers and springers, \$13.50; 1,400; medium, \$10.00; 1,400; state heifers, \$10.50; 1,400; fat cows, \$10.50; 1,125; butchering cows, \$10.00; 1,050; cutters, \$7.50; 8; canners, \$4.50; fancy bulls, \$10.50; 1,125; butchering bulls, \$9.00; fancy bulls, \$10.50; 1,125; common bulls, \$7.50; 1,125; best feeders, 200 to 1,000 lbs., \$5.50; 1,000; medium feeders, \$8.50; stockers, \$7.50; 8.25; light to common, \$7.50; best milkers and springers, \$13.50; 1,400; medium, \$10.00; 1,400; state heifers, \$10.50; 1,400; fat cows, \$10.50; 1,125; butchering cows, \$10.00; 1,050; cutters, \$7.50; 8; canners, \$4.50; fancy bulls, \$10.50; 1,125; butchering bulls, \$9.00; fancy bulls, \$10.50; 1,125; common bulls, \$7.50; 1,125; best feeders, 200 to 1,000 lbs., \$5.50; 1,000; medium feeders, \$8.50; stockers, \$7.50; 8.25; light to common, \$7.50; best milkers and springers, \$13.50; 1,400; medium, \$10.00; 1,400; state heifers, \$10.50; 1,400; fat cows, \$10.50; 1,125; butchering cows, \$10.00; 1,050; cutters, \$7.50; 8; canners, \$4.50; fancy bulls, \$10.50; 1,125; butchering bulls, \$9.00; fancy bulls, \$10.50; 1,125; common bulls, \$7.50; 1,125; best feeders, 200 to 1,000 lbs., \$5.50; 1,000; medium feeders, \$8.50; stockers, \$7.50; 8.25; light to common, \$7.50; best milkers and springers, \$13.50; 1,400; medium, \$10.00; 1,400; state heifers, \$10.50; 1,400; fat cows, \$10.50; 1,125; butchering cows, \$10.00; 1,050; cutters, \$7.50; 8; canners, \$4.50; fancy bulls, \$10.50; 1,125; butchering bulls, \$9.00; fancy bulls, \$10.50; 1,125; common bulls, \$7.50; 1,125; best feeders, 200 to 1,000 lbs., \$5.50; 1,000; medium feeders, \$8.50; stockers, \$7.50; 8.25; light to common, \$7.50; best milkers and springers, \$13.50; 1,400; medium, \$10.00; 1,400; state heifers, \$10.50; 1,400; fat cows, \$10.50; 1,125; butchering cows, \$10.00; 1,050; cutters, \$7.50; 8; canners, \$4.50; fancy bulls, \$10.50; 1,125; butchering bulls, \$9.00; fancy bulls, \$10.50; 1,125; common bulls, \$7.50; 1,125; best feeders, 200 to 1,000 lbs., \$5.50; 1,000; medium feeders, \$8.50; stockers, \$7.50; 8.25; light to common, \$7.50; best milkers and springers, \$13.50; 1,400; medium, \$10.00; 1,400; state heifers, \$10.50; 1,400; fat cows, \$10.50; 1,125; butchering cows, \$10.00; 1,050; cutters, \$7.50; 8; canners, \$4.50; fancy bulls, \$10.50; 1,125; butchering bulls, \$9.00; fancy bulls, \$10.50; 1,125; common bulls, \$7.50; 1,125; best feeders, 200 to 1,000 lbs., \$5.50; 1,000; medium feeders, \$8.50; stockers, \$7.50; 8.25; light to common, \$7.50; best milkers and springers, \$13.50; 1,400; medium, \$10.00; 1,400; state heifers, \$10.50; 1,400; fat cows, \$10.50; 1,125; butchering cows, \$10.00; 1,050; cutters, \$7.50; 8; canners, \$4.50; fancy bulls, \$10.50; 1,125; butchering bulls, \$9.00; fancy bulls, \$10.50; 1,125; common bulls, \$7.50; 1,125; best feeders, 200 to 1,000 lbs., \$5.50; 1,000; medium feeders, \$8.50; stockers, \$7.50; 8.25; light to common, \$7.50; best milkers and springers, \$13.50; 1,400; medium, \$10.00; 1,400; state heifers, \$10.50; 1,400; fat cows, \$10.50; 1,125; butchering cows, \$10.00; 1,050; cutters, \$7.50; 8; canners, \$4.50; fancy bulls, \$10.50; 1,125; butchering bulls, \$9.00; fancy bulls, \$10.50; 1,125; common bulls, \$7.50; 1,125; best feeders, 200 to 1,000 lbs., \$5.50; 1,000; medium feeders, \$8.50; stockers, \$7.50; 8.25; light to common, \$7.50; best milkers and springers, \$13.50; 1,400; medium, \$10.00; 1,400; state heifers, \$10.50; 1,400; fat cows, \$10.50; 1,125; butchering cows, \$10.00; 1,050; cutters, \$7.50; 8; canners, \$4.50; fancy bulls, \$10.50; 1,125; butchering bulls, \$9.00; fancy bulls, \$10.50; 1,125; common bulls, \$7.50; 1,125; best feeders, 200 to 1,000 lbs., \$5.50; 1,000; medium feeders, \$8.50; stockers, \$7.50; 8.25; light to common, \$7.50; best milkers and springers, \$13.50; 1,400; medium, \$10.00; 1,400; state heifers, \$10.50; 1,400; fat cows, \$10.50; 1,125; butchering cows, \$10.00; 1,050; cutters, \$7.50; 8; canners, \$4.50; fancy bulls, \$10.50; 1,125; butchering bulls, \$9.00; fancy bulls, \$10.50; 1,125; common bulls, \$7.50; 1,125; best feeders, 200 to 1,000 lbs., \$5.50; 1,000; medium feeders, \$8.50; stockers, \$7.50; 8.25; light to common, \$7.50; best milkers and springers, \$13.50; 1,400; medium, \$10.00; 1,400; state heifers, \$10.50; 1,400; fat cows, \$10.50; 1,125; butchering cows, \$10.00; 1,050; cutters, \$7.50; 8; canners, \$4.50; fancy bulls, \$10.50; 1,125; butchering bulls, \$9.00; fancy bulls, \$10.50; 1,125; common bulls, \$7.50; 1,125; best feeders, 200 to 1,000 lbs., \$5.50; 1,000; medium feeders, \$8.50; stockers, \$7.50; 8.25; light to common, \$7.50; best milkers and springers, \$13.50; 1,400; medium, \$10.00; 1,400; state heifers, \$10.50; 1,400; fat cows, \$10.50; 1,125; butchering cows, \$10.00; 1,050; cutters, \$7.50; 8; canners, \$4.50; fancy bulls, \$10.50; 1,125; butchering bulls, \$9.00; fancy bulls, \$10.50; 1,125; common bulls, \$7.50; 1,125; best feeders, 200 to 1,000 lbs., \$5.50; 1,000; medium feeders, \$8.50; stockers, \$7.50; 8.25; light to common, \$7.50; best milkers and springers, \$13.50; 1,400; medium, \$10.00; 1,400; state heifers, \$10.50; 1,400; fat cows, \$10.50; 1,125; butchering cows, \$10.00; 1,050; cutters, \$7.50; 8; canners, \$4.50; fancy bulls, \$10.50; 1,125; butchering bulls, \$9.00; fancy bulls, \$10.50; 1,125; common bulls, \$7.50; 1,125; best feeders, 200 to 1,000 lbs., \$5.50; 1,000; medium feeders, \$8.50; stockers, \$7.50; 8.25; light to common, \$7.50; best milkers and springers, \$13.50; 1,400; medium, \$10.00; 1,400; state heifers, \$10.50; 1,400; fat cows, \$10.50; 1,125; butchering cows, \$10.00; 1,050; cutters, \$7.50; 8; canners, \$4.50; fancy bulls, \$10.50; 1,125; butchering bulls, \$9.00; fancy bulls, \$10.50; 1,125; common bulls, \$7.50; 1,125; best feeders, 200 to 1,000 lbs., \$5.50; 1,000; medium feeders, \$8.50; stockers, \$7.50; 8.25; light to common, \$7.50; best milkers and springers, \$13.50; 1,400; medium, \$10.00; 1,400; state heifers, \$10.50; 1,400; fat cows, \$10.50; 1,125; butchering cows, \$10.00; 1,050; cutters, \$7.50; 8; canners, \$4.50; fancy bulls, \$10.50; 1,125; butchering bulls, \$9.00; fancy bulls, \$10.50; 1,125; common bulls, \$7.50; 1,125; best feeders, 200 to 1,000 lbs., \$5.50; 1,000; medium feeders, \$8.50; stockers, \$7.50; 8.25; light to common, \$7.50; best milkers and springers, \$13.50; 1,400; medium, \$10.00; 1,400; state heifers, \$10.50; 1,400; fat cows, \$10.50; 1,125; butchering cows, \$10.00; 1,050; cutters, \$7.50; 8; canners, \$4.50; fancy bulls, \$10.50; 1,125; butchering bulls, \$9.00; fancy bulls, \$10.50; 1,125; common bulls, \$7.50; 1,125; best feeders, 200 to 1,000 lbs., \$5.50; 1,000; medium feeders, \$8.50; stockers, \$7.50; 8.25; light to common, \$7.50; best milkers and springers, \$13.50; 1,400; medium, \$10.00; 1,400; state heifers, \$10.50; 1,400; fat cows, \$10.50; 1,125; butchering cows, \$10.00; 1,050; cutters, \$7.50; 8; canners, \$4.50; fancy bulls, \$10.50; 1,125; butchering bulls, \$9.00; fancy bulls, \$10.50; 1,125; common bulls, \$7.50; 1,125; best feeders, 200 to 1,000 lbs., \$5.50; 1,000; medium feeders, \$8.50; stockers, \$7.50; 8.25; light to common, \$7.50; best milkers and springers, \$13.50; 1,400; medium, \$10.00; 1,400; state heifers, \$10.50; 1,400; fat cows, \$10.50; 1,125; butchering cows, \$10.00; 1,050; cutters, \$7.50; 8; canners, \$4.50; fancy bulls, \$10.50; 1,125; butchering bulls, \$9.00; fancy bulls, \$10.50; 1,125; common bulls, \$7.50; 1,125; best feeders, 200 to 1,000 lbs., \$5.50; 1,000; medium feeders, \$8.50; stockers, \$7.50; 8.25; light to common, \$7.50; best milkers and springers, \$13.50; 1,400; medium, \$10.00; 1,400; state heifers, \$10.50; 1,400; fat cows, \$10.50; 1,125; butchering cows, \$10.00; 1,050; cutters, \$7.50; 8; canners, \$4.50; fancy bulls, \$10.50; 1,125; butchering bulls, \$9.00; fancy bulls, \$10.50; 1,125; common bulls, \$7.50; 1,125; best feeders, 200 to 1,000 lbs., \$5.50; 1,000; medium feeders, \$8.50; stockers, \$7.50; 8.25; light to common, \$7.50; best milkers and springers, \$13.50; 1,400; medium, \$10.00; 1,400; state heifers, \$10.50; 1,400; fat cows, \$10.50; 1,125; butchering cows, \$10.00; 1,050; cutters, \$7.50; 8; canners, \$4.50; fancy bulls, \$10.50; 1,125; butchering bulls, \$9.00; fancy bulls, \$10.50; 1,125; common bulls, \$7.50; 1,125; best feeders, 200 to 1,000 lbs., \$5.50; 1,000; medium feeders, \$8.50; stockers, \$7.50; 8.25; light to common, \$7.50; best milkers and springers, \$13.50; 1,400; medium, \$10.00; 1,400; state heifers, \$10.50; 1,400; fat cows, \$10.50; 1,125; butchering cows, \$10.00; 1,050; cutters, \$7.50; 8; canners, \$4.50; fancy bulls, \$10.50; 1,125; butchering bulls, \$9.00; fancy bulls, \$10.50; 1,125; common bulls, \$7.50; 1,125; best feeders, 200 to 1,000 lbs., \$5.50; 1,000; medium feeders, \$8.50; stockers, \$7.50; 8.25; light to common, \$7.50; best milkers and springers, \$13.50; 1,400; medium, \$10.00; 1,400; state heifers, \$10.50; 1,400; fat cows, \$10.50; 1,125; butchering cows, \$10.00; 1,050; cutters, \$7.50; 8; canners, \$4.50; fancy bulls, \$10.50; 1,125; butchering bulls, \$9.00; fancy bulls, \$10.50; 1,125; common bulls, \$7.50; 1,125; best feeders, 200 to 1,000 lbs., \$5.50; 1,000; medium feeders, \$8.50; stockers, \$7.50; 8.25; light to common, \$7.50; best milkers and springers, \$13.50; 1,400; medium, \$10.00; 1,400; state heifers, \$10.50; 1,400; fat cows, \$10.50; 1,125; butchering cows, \$10.00; 1,050; cutters, \$7.50; 8; canners, \$4.50; fancy bulls, \$10.50; 1,125; butchering bulls, \$9.00; fancy bulls, \$10.50; 1,125; common bulls, \$7.50; 1,125; best feeders, 200 to 1,000 lbs., \$5.50; 1,000; medium feeders, \$8.50; stockers, \$7.50; 8.25; light to common, \$7.50; best milkers and springers, \$13.50; 1,400; medium, \$10.00; 1,400; state heifers, \$10.50; 1,400; fat cows, \$10.50; 1,125; butchering cows, \$10.00; 1,050; cutters, \$7.50; 8; canners, \$4.50; fancy bulls, \$10.50; 1,125; butchering bulls, \$9.00; fancy bulls, \$10.50; 1,125; common bulls, \$7.50; 1,125; best feeders, 200 to 1,000 lbs., \$5.50; 1,000; medium feeders, \$8.50; stockers, \$7.50; 8.25; light to common, \$7.50; best milkers and springers, \$13.50; 1,400; medium, \$10.00; 1,400; state heifers, \$10.50; 1,400; fat cows, \$10.50; 1,125; butchering cows, \$10.00; 1,050; cutters, \$7.50; 8; canners, \$4.50; fancy bulls, \$10.50; 1,125; butchering bulls, \$9.00; fancy bulls, \$10.50; 1,125; common bulls, \$7.50; 1,125; best feeders, 200 to 1,000 lbs., \$5.50; 1,000; medium feeders, \$8.50; stockers, \$7.50; 8.25; light to common, \$7.50; best milkers and springers, \$13.50; 1,400; medium, \$10.00; 1,400; state heifers, \$10.50; 1,400; fat cows, \$10.50; 1,125; butchering cows, \$10.00; 1,050; cutters, \$7.50; 8; canners, \$4.50; fancy bulls, \$10.50; 1,125; butchering bulls, \$9.00; fancy bulls, \$10.50; 1,125; common bulls, \$7.50; 1,125; best feeders, 200 to 1,000 lbs., \$5.50; 1,000; medium feeders, \$8.50; stockers, \$7.50; 8.25; light to common, \$7.50; best milkers and springers, \$13.50; 1,400; medium, \$10.00; 1,400; state heifers, \$10.50; 1,400; fat cows, \$10.50; 1,125; butchering cows, \$10.00; 1,050; cutters, \$7.50; 8; canners, \$4.50; fancy bulls, \$10.50; 1,125; butchering bulls, \$9.00; fancy bulls, \$10.50; 1,125; common bulls, \$7.50; 1,125; best feeders, 200 to 1,000 lbs., \$5.50; 1,000; medium feeders, \$8.50; stockers, \$7.50; 8.25; light to common, \$7.50; best milkers and springers, \$13.50; 1,400; medium, \$10.00; 1,400; state heifers, \$10.50; 1,400; fat cows, \$10.50; 1,125; butchering cows, \$10.00; 1,050; cutters, \$7.50; 8; canners, \$4.50; fancy bulls, \$10.50; 1,125; butchering bulls, \$9.00; fancy bulls, \$10.50; 1,125; common bulls, \$7.50; 1,125; best feeders, 200 to 1,000 lbs., \$5.50; 1,000; medium feeders, \$8.50; stockers, \$7.50; 8.25; light to common, \$7.50; best milkers and springers, \$13.50; 1,400; medium, \$10.00; 1,400; state heifers, \$10.50; 1,400; fat cows, \$10.50; 1,125; butchering cows, \$10.00; 1,050; cutters, \$7.50; 8; canners, \$4.50; fancy bulls, \$10.50; 1,125; butchering bulls, \$9.00; fancy bulls, \$10.50; 1,125; common bulls, \$7.50; 1,125; best feeders, 200 to 1,000 lbs., \$5.50; 1,000; medium feeders, \$8.50; stockers, \$7.50; 8.25; light to common, \$7.50; best milkers and springers, \$13.50; 1,400; medium, \$10.00; 1,400; state heifers, \$10.50; 1,400; fat cows, \$10.50; 1,125; butchering cows, \$10.00; 1,050; cutters, \$7.50; 8; canners, \$4.50; fancy bulls, \$10.50; 1,125; butchering bulls, \$9.00; fancy bulls, \$10.50; 1,125; common bulls, \$7.50; 1,125; best feeders, 200 to 1,000 lbs., \$5.50; 1,000; medium feeders, \$8.50; stockers, \$7.50; 8.25; light to common, \$7.50; best milkers and springers, \$13.50; 1,400; medium, \$10.00; 1,400; state heifers, \$10.50; 1,400; fat cows, \$10.50; 1,125; butchering cows, \$10.00; 1,050; cutters, \$7.50; 8; canners, \$4.50; fancy bulls, \$10.50; 1,125; butchering bulls, \$9.00; fancy bulls, \$10.50; 1,125; common bulls, \$7.50; 1,125; best feeders, 200 to 1,000 lbs., \$5.50; 1,000; medium feeders, \$8.50; stockers, \$7.50; 8.25; light to common, \$7.50; best milkers and springers, \$13.50; 1,400; medium, \$10.00; 1,400; state heifers, \$10.50; 1,400; fat cows, \$10.50; 1,125; butchering cows, \$10.00; 1,050; cutters, \$7.50; 8; canners, \$4.50; fancy bulls, \$10.50; 1,125; butchering bulls, \$9.00; fancy bulls, \$10.50; 1,125; common bulls, \$7.50; 1,125; best feeders, 200 to 1,000 lbs., \$5.50; 1,000; medium feeders, \$8.50; stockers, \$7.50; 8.25; light to common, \$7.50; best milkers