

At Your Leisure

SHOW TIME

Cole entertainment based on the music and lyrics of Cole Porter opens Thursday, April 20, at 8:30 p.m. on campus of Oakland University in Rochester. Meadow Brook Theatre production continues through May 21. Performances at 8:30 p.m. Thursday-Friday; 2 and 8:30 p.m. Saturday and 6:30 p.m. Sunday opening week. Following four weeks performances at 8:30 p.m. Tuesday-Friday; 6 and 8:30 p.m. Saturday; 6:30 p.m. Sunday and 2 p.m. Wednesday. Theater dark Mondays. Tickets at Hudson's or at theater box office. 377-3300.

Far Away Places 22d annual ice show presented by Birmingham Department of Parks and Recreation at 8 p.m. Friday.

Saturday, April 21-22, and 2 p.m. Sunday, April 23, at Birmingham Ice Sports Arena. Tickets may be bought in advance at the arena.

Molins Theatrical Productions presents "The Roar of the Greasepaint, the Smell of the Crowd," at 8:15 p.m. Friday and Saturday, April 21-22 and 28-29, at Lincoln Little Theatre in Lincoln School, Pontiac. Information and reservations at 335-6995.

DINNER THEATER

Plaza Suite comedy by Neil Simon presented by Janus Productions at dinner theater at Sussex House in Southfield. Prime rib dinner and show every Thursday and Friday, with dinner starting at 7 p.m. Reservations at 559-3377.

The Boyfried musical presented by Cocktail Playhouses of America Ltd. at Botsford Inn in Farmington Hills. Dinner Thursdays at 7 p.m., Sundays at 6 p.m.; show immediately following. Reservations at 649-0903.

Gays and Dolls musical presented by Cocktail Playhouses of America Ltd. at Alvaro's Restaurant, downtown Troy. Fridays and Saturdays. Dinner at 7 p.m.; show immediately following. Reservations at 649-0903.

TALKING

Monday Night Lecture Series Alpha Omega presents Robert Thibodeau, owner of the Mayflower Bookstore in Ferndale, speaking on "The Astrology of Dreams" at 8 p.m. Monday, April 17, at Alpha Omega

Thought Gallery in Birmingham. Humanism and Current Literature series of reviews by Rabbi Sherwin Wine presents program on "Daniel Martin," a novel by John Fowles at 8:30 p.m. Monday, April 17, at Birmingham Temple in Farmington Hills. Admission charge.

Russell Barnes Current Events Lecture 1-3 p.m. Tuesday, April 18, in second floor Jeanne Lloyd Room of Baldwin Public Library, Birmingham. Admission charge.

Birmingham AAUW Children's Theater presents Ron McMaster of Orchestra Hall, speaking on the renovation of the hall at 1 p.m. Wednesday, April 19, at home of Mary Beth Cannady in Bloomfield Hills. Membership in children's

theater, now in its 34th year, open to area women. Information from Mrs. Cannady at 338-6779 or Donna Rhinehart, chairwoman, at 644-3094.

Weldon Petz, collector of Lincoln memorabilia, presents "A Pilgrimage with Abraham Lincoln," recalling some of the less familiar events in the life of Lincoln, at 8 p.m. Wednesday, April 19, in second floor Jeanne Lloyd Room of Baldwin Public Library, Birmingham. Presented by Friends of the Baldwin Public Library.

Are We Alone in the Universe? topic explored at 8 p.m. Friday, April 21.

at Oakland University, Rochester. First of eight intellectually entertaining programs offered by Division of Continuing Education. Admission charge. Information at 377-3120.

Jane Goodall lectures on "In the Shadow of Man" at 2 p.m. Sunday, April 23, at Seaholm High School Auditorium, Birmingham. Sponsored by Cranbrook Institute of Science. Admission charge.

For events in Oakland County to be considered for listing send information to: Ethel Simmons, entertainment editor, the Observer & Eccentric, 1225 Bowers, Birmingham 48012. Deadline is two weeks in advance of event.

Activities, displays at LIT open house

Hundreds of special student displays and demonstrations will be exhibited at Lawrence Institute of Technology's annual open house April 22-23. LIT is located on Ten Mile at North-western. The public is invited to the campus for the open house. LIT officials report, parking is free and there is no admission charge.

All campus facilities will be open both days from 10 a.m. to 6:30 p.m., said F. Joseph Walker, a junior from Madison Heights who is chairman of the student open house committee. Student work from all 11 disciplines studied at LIT will be represented, as well as special demonstrations of equipment, research and professional and extracurricular activities.

"Thousands of hours of hard work by our students are represented in open house projects," said Richard Marburger, LIT president. "Open house presents a special opportunity for individuals throughout the metropolitan area, our neighbors, friends, high school students, parents and prospective employers of graduates to

review the work and contributions of our students and institution.

Some highlights of events detailed in the open house six-page program include: architectural exhibits in interior and structural design, urban planning and graphic processes; engineering or technology exhibits in microcomputers, computer graphics, microwave transmission and energy; science exhibits in chemistry, holography, spectroscopy and lasers.

Two short plays will be presented by humanities students and faculty. Business students will discuss methods analysis and facets of various management career areas.

Internationally known product designer Victor Papanek will present a special address at 7:30 p.m. April 22 at the LIT architecture building auditorium.

In conjunction with open house, the LIT library will host a special Smithsonian Institute art exhibit, "Bridges, Tunnels and Hydraulic Works," April 20 through May 15.

SRT ends season with a sweet play

The Young People's Theatre at the Southfield Repertory Theatre will close the 1977-78 season with a magical, musical, growing up fantasy called "The Sweet Milk of Madness."

The play is the "brain child" of Michael Szymanski a native Detroit and graduate of University of Detroit High School.

Several cast members of the SRT production "You're a Good Man Charlie Brown," will be returning in "Sweet Milk of Madness."

John Melodee, who played Charlie Brown, has the starring role as Paul Misano and Barbara Bean who played

Lucy, is Ursula in "Sweet." Other regulars returning for the play include: Dale Van Dorp, Mark Halpin, Jo Hubbard, Deborah DeCoco, Rochelle Rosenthal, Dolores Hurley, Rich DeManicor, Rene Antinossi and Claudia Yukum.

The play is directed by Ralph Valalaka, choreographed by Barbara Bean with musical direction by Lauren MacPherson.

The play opens at 7:00 p.m., Friday, April 21 followed by SRT's popular "red pop reception." The other performances are: 11 a.m. and 2 p.m. Saturday, April 22 and 2 p.m. and 5 p.m. Sunday, April 23.

Christo's Breakfast Specials

2 Eggs
Beacon or Sausage Toast & Jelly
17:30 A.M. to 11:30 A.M. Only

ALL YOU CAN EAT SPECIAL \$1.99

WEDNESDAY - SPAGHETTI

CARRYOUTS - 633-0816

26999 W. EIGHT MILE ROAD, REDFORD TWP.

(D BLVD. EAST OF INKSTER)

HOURS: MON-SAT. 7 A.M. TO 12 A.M.

SUN. 7 A.M. TO 11 P.M.

The Boar's Head Inn

To Name A Few of Our Finer Features

• Served Bar-with the works!
• Finest Dances Band • Wed. thru Sat.
• Businessmen's Luncheon 11:30-2:30
• Banquet Facilities

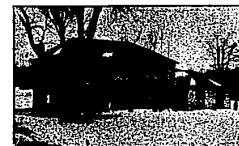
26707 W. Warren

Dearborn Heights



274-0060

All New Entertainment
7 Days a Week
SUNDAY NITE
America's Most Exciting Music
HARD ROCK AND HEAVY METAL
SUNDAY NITE
BOBBY BUCK WITH PEACE OF MIND
SUNDAY NITE
TUES - SATURDAY
FABULOUS JOE FORD & FRIENDS
DINNERS DAILY 4 P.M.
SUNDAY FAMILY STYLE DINNER
\$3.95
1245
2611 Middlebelt • 261-5822 • Major Credit Cards Accepted



LAKE FRONT Classic on private Bloomfield Hills court. Custom 1976 home. 2-story, white marble foyer, library, fireplace family room, wet bar, Central Air, 4 baths, \$26-9100. \$169,900.



SIX ACRES of privacy with builder's own 1974 Ranch, barn. Stone fireplace in family room with deck over walk-out lower level. 4 bedrooms, 2 1/2 baths plus library. 651-8850. \$125,900.



NICELY GROOMED acreage and home in prize Birmingham area. Lovely in-ground pool, 2 fireplaces, family room, beautiful rec room with bar, 4 bedrooms, circle drive. 647-5950. \$135,900.



HORSES, HORSES! 2.4 acres with 1895 refurbished Farm House. Spiral staircase leads to romantic second floor balcony. A unique combination of location, design and value. 557-6700. \$135,000.



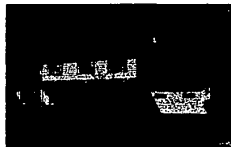
ROCHESTER. Spacious comfort in 1976 home with 3268 sq. ft. 25'x15' family room has fireplace. Open, 2-story foyer. Gourmet Kitchen serves 15' nook, large dining room. 651-8850. \$146,900.



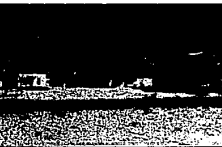
STATELY elegance in top neighborhood. Immaculate 4 bedroom home offers full walk-out basement as a bonus. Two doorways to deck, brick wall fireplace. Superb. 626-9100. \$119,900.



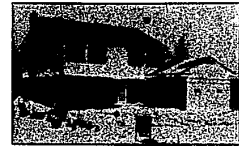
STUNNING, fully redecorated Ranch on 1 1/2 acres with in-ground pool. New kitchen, Driftstone fireplace wall, Florida, family and rec rooms. Bloomfield Hills schools. 689-8900. \$89,900.



COMMANDING HILLTOP views from this totally appealing, 4 bedroom home. Pure Contemporary decor in great taste. Large fireplace family room. Prime Birmingham area. 647-5950. \$104,900.



HORSE LOVERS! Invest in this 10 acre country estate. Equipped 55'x30' barn (10 horses now boarded), 3/4 car heated garage, Aluminum-sided 3 bedroom home. 626-9100. \$104,900.



BRAND NEW, top value 4 bedroom, 2 1/2 bath home needs your finishing touches. Ceramic foyer with circular staircase, fireplace family room with wet bar, first floor laundry, more! 626-9100. \$87,800



TREES AND LAKE Privileges add to this spacious, open Ranch with cathedral ceilings. 3 bedrooms, 2 full baths, fireplace family room, porch, gas grill. On one half acre. 626-9100. \$74,900.



GARDEN SPOT with huge terrace for this traditional Beverly Hills home. Custom decor in living room with fireplace, dining room, lovely rec room with wet bar. 557-6700. \$96,500.



VERY SHARP Cranbrook Village home with Birmingham schools. 4 bedrooms, 2 1/2 baths plus fireplace family room, full basement. Oriental gardens, gas grill. Convenient! 646-6000. \$89,900.



PURE NATURE with treed hilltop, scenic ravine in Southfield. And lovely pool for summer comfort. Roomy Ranch with modern kitchen, warm family room. 2 1/2 car garage. 557-6700. \$46,900.



ENJOY SUMMER in great pool. Enjoy the comforts of this large Mansard Colonial. Family room has fireplace, built-in kitchen serves formal dining room, screened terrace. 557-6700. \$76,900.

Colonial House
Even this 7-ton truck couldn't destroy the amazing comfort of our Spring Air Back Supporter!

After the truck rolled over the mattress, the only difference was a few tire marks! Absolutely no damage to any part of this comfortable and durable mattress. The secret is the exclusive Karr's innerspring unit that lets the springs bounce back to normal after any load—a 300 pound man or a 14,800 pound truck! Come test the Back Supporter® and experience all its qualities!

Majestic Back Supporter
Twin size, ea. pc. \$600.00

Other sizes proportionately priced.

Colonial House
20292 Middlebelt, South of 8 Mile
Livonia

OPEN: Mon., Thurs. & Fri. til 9 P.M. 474-6900

Chamberlain
REALTORS®

• BIRMINGHAM
646-6000

• BLOOMFIELD HILLS
647-5950

• WEST BLOOMFIELD—
FARMINGTON HILLS
626-9100

• SOUTHFIELD—
LATHRUP VILLAGE
557-6700

• TROY
689-8900

• ROCHESTER
651-8850