

# China painters set show, sale

By LORAIN McCLISH

The 30 members of the China Decorators Guild, who meet regularly in Farmington's First United Methodist Church, will travel to Royal Oak for their spring show and sale May 5.

The show of hand-painted china will run from 11 a.m. to 8 p.m. in St. John Episcopal Church, 115 South Woodward, at Eleven Mile.

Dolores Petachenko, a teacher of the art of china painting and a long-time member of the guild, will be demonstrating how to paint white roses during show hours. She is one of several who will be demonstrating their specialty.

All of the demonstrators will have up to four and five pieces of a kind on display, showing the multiple steps of painting and firing that is required to complete a finished work.

Items on sale will run from relatively inexpensive pieces of jewelry to extremely intricate lamp shades.

"There is always a big variety, both utilitarian and decorative," Mrs. Petachenko said, "because of the varied interests of our members."

WHAT STARTED as a hobby for the Farmington woman has now taken on the proportions of a job as she answers requests for commissioned pieces.

"We get regular customers," she said. "Most of us have a following of customers who want to see what we've done since they've seen us last. It's amazing how far some will travel for one of our shows," she said.



Dolores Petachenko shows some of the china painted pieces she will have on display during the China Decorators Guild spring show. The large vase, in foreground, will be one of five pieces created by members to be given away in a raffle. (Staff photo by Harry Mauthe)

## Braille group plans meeting

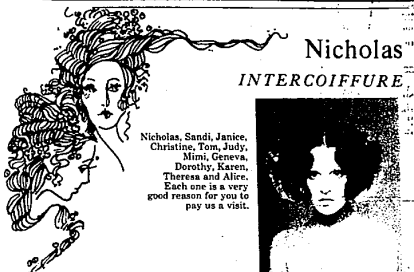
The Tri-County Braille Volunteers will have their annual spring meeting at Congregation Beth Shalom in Oak Park at 12:30 p.m., May 11.

The group is made up of volunteers from the tri-county area who have been accredited by the Library of Congress and transcribe thousands of free volumes each year. They produce many of the textbooks used in Wayne, Oakland and Macomb County schools as well as restaurant menus, greeting cards, CB manuals and bus schedules.

For further information call Emily Buchman, 559-7112.

## Self-defense for disabled

"Self defense for the handicapped" will be the topic at the Michigan chapter of the Arthritis Foundation's monthly session at 7 p.m. May 8, at St. David's Episcopal Church, Twelve Mile and Evergreen, Southfield.



Heritage Plaza Building, Suite 124 • 24901 Northwestern Hwy., at 10 Mile Road Southfield, Michigan 48075 • Dial 353-6080

## Kristine Kustron vies in teenager pageant

Kristine Kustron, the 15-year-old daughter of Mr. and Mrs. Edward Orchard Lake, Farmington Hills, has been selected as a finalist in the 1978 Michigan National Teenager Pageant. The pageant will be held in Pease Auditorium, Eastern Michigan University on May 13.

She will be spending the pageant weekend at Hoyt Conference Center at EMU.

State finalists are selected on the basis of their scholastic records, community involvement, school and/or church activities, poise, personality and appearance.

Miss Kustron has participated as a Red Cross junior volunteer and holds the second highest number of volunteer hours of service in one summer.



KRISTINE KUSTRON

## MICHIGAN AWNINGS

BEAT THE HEAT

CUSTOM STYLES AND COLORS

**SPRINGTIME FRESHNESS/YEAR-AROUND BEAUTY**

Save energy... Save your drapes, carpets and furniture

Keep your home cool

Michigan Awnings Are Permalined with vinyl and silicone for long year-around life.

We are competitive anywhere in DETROIT AND ALL SUBURBS

**CALL TODAY 894-4400**

## Lilly's young fashions

Beautiful new long dresses in all pastel colors.

Boys' suits for all occasions.

Come early for all your camp needs.

An excellent selection of spring & summer fashion—on Sale

**20%-30% OFF!**

Tues-Fri 10-9 Mon & Sat 10-6 Sun 12-5

**EVERGREEN PLAZA—SOUTHFIELD**

Evergreen & 12 Mile Rd.—559-6680

## LAMP and TABLE COMBINATION

Specialty Priced **\$39.95** take with

Here's a real space saver, a handsome floor lamp that doubles as a table too! Choice of maple or pine. Ideal as a Mother's Day gift, next to her rocker or chair. Quantities limited.

• Master Charge • Bank Americard

## Mother's Day SPECIALS

For that particular mother, who's like no other...

For the mom that you adore, we have tennis items galore.

TENNIS APPAREL

**Second Serve**

25681 Northwestern S. of 12 Mile 1 Bk. N. of Victoria Station Next Door to Balcon Bar Hours: Mon-Sat. 10-4:30, Sun. 12-4

**358-5930**

## Company's Coming

Leisure Living Homeowner for Mother's Day

• Mother's Day, May 11

• Designer Shop Goods '13 '12

29260 Franklin Road, Claymore Apt. Bldg. Monday to Friday 10:30-4:30 356-1233

## WE'RE MOVING!!!! Storewide Sale

**20% OFF EVERYTHING IN THE STORE (OLD VILLAGE STORE ONLY)**

**STARTS TODAY!!**

We're combining our 2 stores into one convenient location!

## little angels shoppe

OLD VILLAGE • 615 N. MILL ST. • PLYMOUTH 453-9451

OPEN DAILY 10-5:30 P.M. FRI. 10-8:30 P.M.

## Colonial House

20292 Middlebelt, South of 8 Mile Livonia

Mon, Thurs & Fri. Open till 9 p.m.

**474-6900**

## John Darakjian Jewelry

Pure Pizazz plus A Touch of Class

Just for her on Mother's Day

The Lariat Look shown above in two distinctive styles

23077 Greenfield Rd. Suite 353 Southfield, Mi. 557-0616

## FURNISHED MODEL Open 10am-4pm

## FRANKLIN CLUB APARTMENTS

an adult community

28301 Franklin Road, Southfield, Michigan

Franklin Club is a pleasant, comfortable, secure place to live. Each resident has the complete privacy of a one or two bedroom apartment AND fine meals in Franklin Club's restaurant. Organized activities are available. There is socializing in the lounges. Transportation and maid and linen service is furnished. A limited number of apartments now available for occupancy.

**Call 353-2810**

## WIGGS Since 1903

**Only 100 to Sell!**

Ethan Allen Square Pedestal Bunching Table...

Delightful and decorative bunching table to place next to a chair... use two in front of a sofa! Richly finished solid antique pine, 19" square x 16" H. In stock in cartons for immediate "take-with".

**NOW \$29.95 ...Reg. \$62.50**

4080 TELEGRAPH RD. (at Long Lake Rd.) FLORENCE HILLS • 644-7370

open Mon., Thurs. & Fri. 'til 9

1908 to 1978