

## Moral perspectives

## Mercy killing is against tradition

By RABBI IRWIN GRONER

Euthanasia, or deliberate mercy killing, is forbidden by law, moral tradition and medical practice. Yet it has received increasing public support.

A recent Gallup Poll asked: "When a person has a disease that cannot be cured, do you think doctors should be allowed, by law, to end a patient's life by some painless means if the patient and his family request it?" Fifty-three percent answered "yes," with younger and college-educated persons giving a larger proportion of affirmative answers than the others polled.

Yet this trend runs directly counter to the emphasis which the Jewish and Christian traditions place upon life and God's gift, not to be disposed of by human hands. According to Scripture, God alone is the author of life, and no human being has the right to end the life of another.

Following the commandment, "Thou shalt not murder," numerous declarations by religious bodies have condemned all forms of euthanasia as contrary to God's will. Euthanasia has been viewed as a sin for the same reason that suicide and homicide are sins: they take innocent life. They claim for human self-determination that which belongs only to God.

If the right to life is inalienable, and if life is God's precious gift, then it cannot, according to this view, law-

fully be renounced by the individual, or taken with his consent. No individual has the absolute right to self-determination over even his own bodily life, much less the life of another. Life is not given merely for pleasure, to be discarded when pain comes, but rather for the sanctification of human existence.

Religion has taught that even suffering can be a significant part of God's purpose in the nurture of human character toward ever fuller responsiveness to the gifts and possibilities of life, even in the face of death.

But the dilemma that we face today is in the clash of to different and opposing responsibilities. First is the obligation to preserve and sustain human life, and second is the obligation to relieve pain. What are medicine and morality to do when these two crucial values collide, as they do in the case of irreversible illness and terrible pain?

At what point is medicine morally authorized to withhold sustaining treatments which would intentionally end life, but which would thereby relieve suffering?

When can the physician legitimately say that nothing better can be done than to terminate the treatment which prolongs life?

These questions will be considered in a subsequent column.

## Diocesan assembly begins in Southfield

Scholar and historian David Marshall Lang of London, England, will accept the Friend of the Armenians award during the Diocesan Assembly that has been scheduled from May 2-7 by St. John Armenian Church of Greater Detroit, 2001 Northwestern Highway, Southfield.

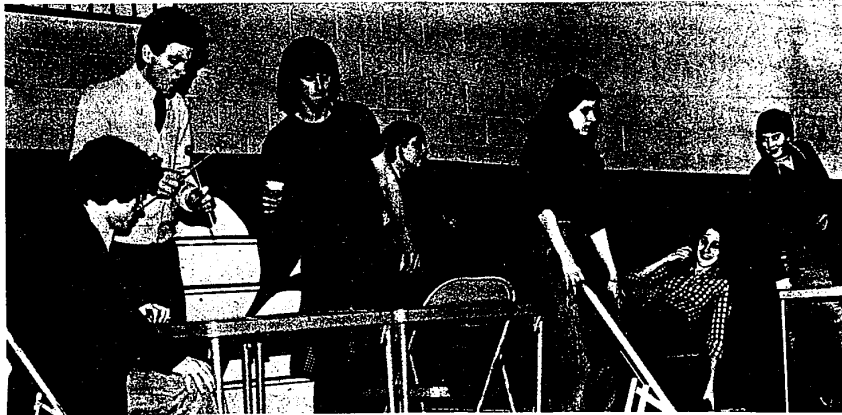
Also to be honored at the Saturday night banquet will be George Buehan of New York City, a community leader.

Lang is the author of two books, "Armenia: Cradle of Civilization" and "The Peoples of the Hills," and many scholarly publications.

Armenian dancing to the music of the Haghi Kazarian Ensemble will follow the award presentation.

Students of the Alex Manogian School will provide a program of Armenian dancing plus a humorous skit on Sunday evening.

There will be a heritage costume presentation of the Armenian clothing Friday evening. Both during and after the display of these costumes, the museum housed near the sanctuary will be open for guests. Artifacts, ancient manuscripts, silver earthenware and rare carpets will be available for viewing.



## Fun-filled show

Pioneers in the tradition of doing their own thing are members of the Vanderhof family, who will be portrayed by students of Detroit Catholic Central High School in a play of the 1930s, "You Can't Take It With You." The dramatization will be presented at 8 p.m. May 5 and 6 and at 7 p.m. Sunday, May 7, in the school at 6565 W. Outer

Drive at Hubbell, Detroit. Tickets at \$2 will be sold at the door. Some of those performing in the comedy are (from left) Brad Casemore, Lance Gotko, Rik Jopock, Margaret Michel, Kevin Kresowik, Cheryl Cokajlo, Tricia Moylan and Tony Madonia.

## Cardinal to bless new center

Cardinal John Dearden, archbishop of Detroit, will bestow a blessing for hospitals on the new St. Elizabeth Ann Seton Center of Providence Hospital, Southfield, during dedication ceremonies at 11 a.m. Saturday.

Also participating in the program will be Thomas Burns of Franklin, president of the Providence advisory board; Councilman Steve Hurlie of Southfield; Dr. Kenneth Trader of Birmingham, president of the staff, and St. Xavier Bialance, hospital administrator.

Following the dedication, participants may tour the center. Public tours will take place between 2 and 4 p.m. Saturday.

The new building is named in honor of St. Elizabeth Ann Seton, founder of the Daughters of Charity community in the U.S., and the first native-born American to be canonized a saint by the Catholic church.

The center is built on three levels and contains 52 beds to bring the hospital's total to 458. It has 12-bed intensive and cardiac care units and two 26-bed stepdown units for patients nearing recovery.

A diagnostic area will permit tests, which before required hospitalization, to be done on an out-patient basis. Four surgical suites, a pre-operative holding area and recovery room form the new self-contained center for out-patient surgery.

Other services to be available are respiratory therapy, audiology, EKG-EKG, stress testing, physiology, audiology, a pulmonary function lab, and the stoma clinic.

## Berries come to Hamtramck

The strawberries are coming. The strawberries are coming to St. Florian Catholic Church, 2822 Florian, Hamtramck.

They will arrive in the form of strawberry pies and sundae at the strawberry festival held from noon to 9 p.m. Sunday, May 7.

Money raised by the event will benefit the St. Florian church fund.

## Archdiocese fund drive starts up

The annual fund drive of the Archdiocese of Detroit now is underway. It provides money for ongoing works of religion, education and charity in Wayne, Macomb, Monroe, Lapeer and St. Clair counties.

Coordinating the 1978 development fund for the Western Wayne Vicariate are the Rev. William Pettit of St. Norbert Parish, Inkster, and John Lochrie of St. Anthony Parish, Belleville.

Cardinal John Dearden, archbishop of Detroit, has announced a minimum fund drive goal of \$2,150,000, about seven per cent more than last year's total in pledges and cash.

Parishes in the Western Wayne Vicariate contributed about \$56,000 in 1977.

## Your Invitation to Worship

<b>ANTIOCH LUTHERAN CHURCH</b> 13 Mile & Farmington Rd. Worship 8:30 & 11:30 Sunday School 9:30 Nursery Provided Pastor: Bert Anderson L.C.A. 626-7008	<b>CLARENCEVILLE UNITED METHODIST</b> 20300 Middlebelt, Livonia Pastor: Gerald Fisher 9 a.m. First Worship Service 10:15 a.m. Church School 11:15 a.m. Second Service of Worship Nursery Provided at All Services	<b>The Congregational Church of Birmingham, U.C.C.</b> Woodward at Cranbrook Bloomfield Hills Worship and Church School 9:30 and 11:00 a.m. Minister: Rev. Charles O. Erickson Ministry of Education: Rev. Allen V. Walker	<b>EMMANUEL LUTHERAN CHURCH</b> 23425 Lathrup Road (Just N. of 9 Mile) Worship: 8:30 A.M. Church School: 10:45 A.M. The Rev. L. Alden Erickson	<b>"I AM THAT I AM"</b> TEACHINGS OF THE ASCENDED MASTERS • SCIENCE OF THE SPOKEN WORD • STUDIES OF THE AURA • STUDIES OF THE CHAKRAS • TRANSMUTING KARMA (KARMA) • KEYS OF THE AURA • STUDIES OF THE DEEPEST AND SINGING MON. 7:30-9:30 TUE. 7:30-9:30 WED. 7:30-9:30 THUR. 7:30-9:30 FRI. 7:30-9:30 SAT. 7:30-9:30 SUN. 10:00-12:00 THE SUMMIT LIGHTHOUSE OF DETROIT 23847 WOODWARD at 9th Mile 545-6749	<b>FRANKLIN COMMUNITY CHURCH</b> United Methodist on Franklin Village Green Services at 9:15 and 11:15 a.m. Nursery care at both Services Sunday School at 11:15 a.m. Adult Education at 10:15 a.m. Family Hour at 10:15 a.m. Senior Minister: Frank B. Cowick Associate Minister: J. Chester Stubbs	<b>First Church Of God</b> Farmington Hills 25717 Farmington Rd. Worship 10:00 a.m. Church School 9:45-10:00 a.m. Worship 4:45-5:15 p.m. Worship 7:30-8:00 p.m. Worship 9:45-10:00 p.m. Worship 11:00-11:30 p.m. Worship 12:00-12:30 p.m. Worship 1:00-1:30 p.m. Worship 2:00-2:30 p.m. Worship 3:00-3:30 p.m. Worship 4:00-4:30 p.m. Worship 5:00-5:30 p.m. Worship 6:00-6:30 p.m. Worship 7:00-7:30 p.m. Worship 8:00-8:30 p.m. Worship 9:00-9:30 p.m. Worship 10:00-10:30 p.m. Worship 11:00-11:30 p.m. Worship 12:00-12:30 p.m. Worship 1:00-1:30 p.m. Worship 2:00-2:30 p.m. Worship 3:00-3:30 p.m. Worship 4:00-4:30 p.m. Worship 5:00-5:30 p.m. Worship 6:00-6:30 p.m. Worship 7:00-7:30 p.m. Worship 8:00-8:30 p.m. Worship 9:00-9:30 p.m. Worship 10:00-10:30 p.m. Worship 11:00-11:30 p.m. Worship 12:00-12:30 p.m. Worship 1:00-1:30 p.m. Worship 2:00-2:30 p.m. Worship 3:00-3:30 p.m. Worship 4:00-4:30 p.m. Worship 5:00-5:30 p.m. Worship 6:00-6:30 p.m. Worship 7:00-7:30 p.m. Worship 8:00-8:30 p.m. Worship 9:00-9:30 p.m. Worship 10:00-10:30 p.m. Worship 11:00-11:30 p.m. Worship 12:00-12:30 p.m. Worship 1:00-1:30 p.m. Worship 2:00-2:30 p.m. Worship 3:00-3:30 p.m. Worship 4:00-4:30 p.m. Worship 5:00-5:30 p.m. Worship 6:00-6:30 p.m. Worship 7:00-7:30 p.m. Worship 8:00-8:30 p.m. Worship 9:00-9:30 p.m. Worship 10:00-10:30 p.m. Worship 11:00-11:30 p.m. Worship 12:00-12:30 p.m. Worship 1:00-1:30 p.m. Worship 2:00-2:30 p.m. Worship 3:00-3:30 p.m. Worship 4:00-4:30 p.m. Worship 5:00-5:30 p.m. Worship 6:00-6:30 p.m. Worship 7:00-7:30 p.m. Worship 8:00-8:30 p.m. Worship 9:00-9:30 p.m. Worship 10:00-10:30 p.m. Worship 11:00-11:30 p.m. Worship 12:00-12:30 p.m. Worship 1:00-1:30 p.m. Worship 2:00-2:30 p.m. Worship 3:00-3:30 p.m. Worship 4:00-4:30 p.m. Worship 5:00-5:30 p.m. Worship 6:00-6:30 p.m. Worship 7:00-7:30 p.m. Worship 8:00-8:30 p.m. Worship 9:00-9:30 p.m. Worship 10:00-10:30 p.m. Worship 11:00-11:30 p.m. Worship 12:00-12:30 p.m. Worship 1:00-1:30 p.m. Worship 2:00-2:30 p.m. Worship 3:00-3:30 p.m. Worship 4:00-4:30 p.m. Worship 5:00-5:30 p.m. Worship 6:00-6:30 p.m. Worship 7:00-7:30 p.m. Worship 8:00-8:30 p.m. Worship 9:00-9:30 p.m. Worship 10:00-10:30 p.m. Worship 11:00-11:30 p.m. Worship 12:00-12:30 p.m. Worship 1:00-1:30 p.m. Worship 2:00-2:30 p.m. Worship 3:00-3:30 p.m. Worship 4:00-4:30 p.m. Worship 5:00-5:30 p.m. Worship 6:00-6:30 p.m. Worship 7:00-7:30 p.m. Worship 8:00-8:30 p.m. Worship 9:00-9:30 p.m. Worship 10:00-10:30 p.m. Worship 11:00-11:30 p.m. Worship 12:00-12:30 p.m. Worship 1:00-1:30 p.m. Worship 2:00-2:30 p.m. Worship 3:00-3:30 p.m. Worship 4:00-4:30 p.m. Worship 5:00-5:30 p.m. Worship 6:00-6:30 p.m. Worship 7:00-7:30 p.m. Worship 8:00-8:30 p.m. Worship 9:00-9:30 p.m. Worship 10:00-10:30 p.m. Worship 11:00-11:30 p.m. Worship 12:00-12:30 p.m. Worship 1:00-1:30 p.m. Worship 2:00-2:30 p.m. Worship 3:00-3:30 p.m. Worship 4:00-4:30 p.m. Worship 5:00-5:30 p.m. Worship 6:00-6:30 p.m. Worship 7:00-7:30 p.m. Worship 8:00-8:30 p.m. Worship 9:00-9:30 p.m. Worship 10:00-10:30 p.m. Worship 11:00-11:30 p.m. Worship 12:00-12:30 p.m. Worship 1:00-1:30 p.m. Worship 2:00-2:30 p.m. Worship 3:00-3:30 p.m. Worship 4:00-4:30 p.m. Worship 5:00-5:30 p.m. Worship 6:00-6:30 p.m. Worship 7:00-7:30 p.m. Worship 8:00-8:30 p.m. Worship 9:00-9:30 p.m. Worship 10:00-10:30 p.m. Worship 11:00-11:30 p.m. Worship 12:00-12:30 p.m. Worship 1:00-1:30 p.m. Worship 2:00-2:30 p.m. Worship 3:00-3:30 p.m. Worship 4:00-4:30 p.m. Worship 5:00-5:30 p.m. Worship 6:00-6:30 p.m. Worship 7:00-7:30 p.m. Worship 8:00-8:30 p.m. Worship 9:00-9:30 p.m. Worship 10:00-10:30 p.m. Worship 11:00-11:30 p.m. Worship 12:00-12:30 p.m. Worship 1:00-1:30 p.m. Worship 2:00-2:30 p.m. Worship 3:00-3:30 p.m. Worship 4:00-4:30 p.m. Worship 5:00-5:30 p.m. Worship 6:00-6:30 p.m. Worship 7:00-7:30 p.m. Worship 8:00-8:30 p.m. Worship 9:00-9:30 p.m. Worship 10:00-10:30 p.m. Worship 11:00-11:30 p.m. Worship 12:00-12:30 p.m. Worship 1:00-1:30 p.m. Worship 2:00-2:30 p.m. Worship 3:00-3:30 p.m. Worship 4:00-4:30 p.m. Worship 5:00-5:30 p.m. Worship 6:00-6:30 p.m. Worship 7:00-7:30 p.m. Worship 8:00-8:30 p.m. Worship 9:00-9:30 p.m. Worship 10:00-10:30 p.m. Worship 11:00-11:30 p.m. Worship 12:00-12:30 p.m. Worship 1:00-1:30 p.m. Worship 2:00-2:30 p.m. Worship 3:00-3:30 p.m. Worship 4:00-4:30 p.m. Worship 5:00-5:30 p.m. Worship 6:00-6:30 p.m. Worship 7:00-7:30 p.m. Worship 8:00-8:30 p.m. Worship 9:00-9:30 p.m. Worship 10:00-10:30 p.m. Worship 11:00-11:30 p.m. Worship 12:00-12:30 p.m. Worship 1:00-1:30 p.m. Worship 2:00-2:30 p.m. Worship 3:00-3:30 p.m. Worship 4:00-4:30 p.m. Worship 5:00-5:30 p.m. Worship 6:00-6:30 p.m. Worship 7:00-7:30 p.m. Worship 8:00-8:30 p.m. Worship 9:00-9:30 p.m. Worship 10:00-10:30 p.m. Worship 11:00-11:30 p.m. Worship 12:00-12:30 p.m. Worship 1:00-1:30 p.m. Worship 2:00-2:30 p.m. Worship 3:00-3:30 p.m. Worship 4:00-4:30 p.m. Worship 5:00-5:30 p.m. Worship 6:00-6:30 p.m. Worship 7:00-7:30 p.m. Worship 8:00-8:30 p.m. Worship 9:00-9:30 p.m. Worship 10:00-10:30 p.m. Worship 11:00-11:30 p.m. Worship 12:00-12:30 p.m. Worship 1:00-1:30 p.m. Worship 2:00-2:30 p.m. Worship 3:00-3:30 p.m. Worship 4:00-4:30 p.m. Worship 5:00-5:30 p.m. Worship 6:00-6:30 p.m. Worship 7:00-7:30 p.m. Worship 8:00-8:30 p.m. Worship 9:00-9:30 p.m. Worship 10:00-10:30 p.m. Worship 11:00-11:30 p.m. Worship 12:00-12:30 p.m. Worship 1:00-1:30 p.m. Worship 2:00-2:30 p.m. Worship 3:00-3:30 p.m. Worship 4:00-4:30 p.m. Worship 5:00-5:30 p.m. Worship 6:00-6:30 p.m. Worship 7:00-7:30 p.m. Worship 8:00-8:30 p.m. Worship 9:00-9:30 p.m. Worship 10:00-10:30 p.m. Worship 11:00-11:30 p.m. Worship 12:00-12:30 p.m. Worship 1:00-1:30 p.m. Worship 2:00-2:30 p.m. Worship 3:00-3:30 p.m. Worship 4:00-4:30 p.m. Worship 5:00-5:30 p.m. Worship 6:00-6:30 p.m. Worship 7:00-7:30 p.m. Worship 8:00-8:30 p.m. Worship 9:00-9:30 p.m. Worship 10:00-10:30 p.m. Worship 11:00-11:30 p.m. Worship 12:00-12:30 p.m. Worship 1:00-1:30 p.m. Worship 2:00-2:30 p.m. Worship 3:00-3:30 p.m. Worship 4:00-4:30 p.m. Worship 5:00-5:30 p.m. Worship 6:00-6:30 p.m. Worship 7:00-7:30 p.m. Worship 8:00-8:30 p.m. Worship 9:00-9:30 p.m. Worship 10:00-10:30 p.m. Worship 11:00-11:30 p.m. Worship 12:00-12:30 p.m. Worship 1:00-1:30 p.m. Worship 2:00-2:30 p.m. Worship 3:00-3:30 p.m. Worship 4:00-4:30 p.m. Worship 5:00-5:30 p.m. Worship 6:00-6:30 p.m. Worship 7:00-7:30 p.m. Worship 8:00-8:30 p.m. Worship 9:00-9:30 p.m. Worship 10:00-10:30 p.m. Worship 11:00-11:30 p.m. Worship 12:00-12:30 p.m. Worship 1:00-1:30 p.m. Worship 2:00-2:30 p.m. Worship 3:00-3:30 p.m. Worship 4:00-4:30 p.m. Worship 5:00-5:30 p.m. Worship 6:00-6:30 p.m. Worship 7:00-7:30 p.m. Worship 8:00-8:30 p.m. Worship 9:00-9:30 p.m. Worship 10:00-10:30 p.m. Worship 11:00-11:30 p.m. Worship 12:00-12:30 p.m. Worship 1:00-1:30 p.m. Worship 2:00-2:30 p.m. Worship 3:00-3:30 p.m. Worship 4:00-4:30 p.m. Worship 5:00-5:30 p.m. Worship 6:00-6:30 p.m. Worship 7:00-7:30 p.m. Worship 8:00-8:30 p.m. Worship 9:00-9:30 p.m. Worship 10:00-10:30 p.m. Worship 11:00-11:30 p.m. Worship 12:00-12:30 p.m. Worship 1:00-1:30 p.m. Worship 2:00-2:30 p.m. Worship 3:00-3:30 p.m. Worship 4:00-4:30 p.m. Worship 5:00-5:30 p.m. Worship 6:00-6:30 p.m. Worship 7:00-7:30 p.m. Worship 8:00-8:30 p.m. Worship 9:00-9:30 p.m. Worship 10:00-10:30 p.m. Worship 11:00-11:30 p.m. Worship 12:00-12:30 p.m. Worship 1:00-1:30 p.m. Worship 2:00-2:30 p.m. Worship 3:00-3:30 p.m. Worship 4:00-4:30 p.m. Worship 5:00-5:30 p.m. Worship 6:00-6:30 p.m. Worship 7:00-7:30 p.m. Worship 8:00-8:30 p.m. Worship 9:00-9:30 p.m. Worship 10:00-10:30 p.m. Worship 11:00-11:30 p.m. Worship 12:00-12:30 p.m. Worship 1:00-1:30 p.m. Worship 2:00-2:30 p.m. Worship 3:00-3:30 p.m. Worship 4:00-4:30 p.m. Worship 5:00-5:30 p.m. Worship 6:00-6:30 p.m. Worship 7:00-7:30 p.m. Worship 8:00-8:30 p.m. Worship 9:00-9:30 p.m. Worship 10:00-10:30 p.m. Worship 11:00-11:30 p.m. Worship 12:00-12:30 p.m. Worship 1:00-1:30 p.m. Worship 2:00-2:30 p.m. Worship 3:00-3:30 p.m. Worship 4:00-4:30 p.m. Worship 5:00-5:30 p.m. Worship 6:00-6:30 p.m. Worship 7:00-7:30 p.m. Worship 8:00-8:30 p.m. Worship 9:00-9:30 p.m. Worship 10:00-10:30 p.m. Worship 11:00-11:30 p.m. Worship 12:00-12:30 p.m. Worship 1:00-1:30 p.m. Worship 2:00-2:30 p.m. Worship 3:00-3:30 p.m. Worship 4:00-4:30 p.m. Worship 5:00-5:30 p.m. Worship 6:00-6:30 p.m. Worship 7:00-7:30 p.m. Worship 8:00-8:30 p.m. Worship 9:00-9:30 p.m. Worship 10:00-10:30 p.m. Worship 11:00-11:30 p.m. Worship 12:00-12:30 p.m. Worship 1:00-1:30 p.m. Worship 2:00-2:30 p.m. Worship 3:00-3:30 p.m. Worship 4:00-4:30 p.m. Worship 5:00-5:30 p.m. Worship 6:00-6:30 p.m. Worship 7:00-7:30 p.m. Worship 8:00-8:30 p.m. Worship 9:00-9:30 p.m. Worship 10:00-10:30 p.m. Worship 11:00-11:30 p.m. Worship 12:00-12:30 p.m. Worship 1:00-1:30 p.m. Worship 2:00-2:30 p.m. Worship 3:00-3:30 p.m. Worship 4:00-4:30 p.m. Worship 5:00-5:30 p.m. Worship 6:00-6:30 p.m. Worship 7:00-7:30 p.m. Worship 8:00-8:30 p.m. Worship 9:00-9:30 p.m. Worship 10:00-10:30 p.m. Worship 11:00-11:30 p.m. Worship 12:00-12:30 p.m. Worship 1:00-1:30 p.m. Worship 2:00-2:30 p.m. Worship 3:00-3:30 p.m. Worship 4:00-4:30 p.m. Worship 5:00-5:30 p.m. Worship 6:00-6:30 p.m. Worship 7:00-7:30 p.m. Worship 8:00-8:30 p.m. Worship 9:00-9:30 p.m. Worship 10:00-10:30 p.m. Worship 11:00-11:30 p.m. Worship 12:00-12:30 p.m. Worship 1:00-1:30 p.m. Worship 2:00-2:30 p.m. Worship 3:00-3:30 p.m. Worship 4:00-4:30 p.m. Worship 5:00-5:30 p.m. Worship 6:00-6:30 p.m. Worship 7:00-7:30 p.m. Worship 8:00-8:30 p.m. Worship 9:00-9:30 p.m. Worship 10:00-10:30 p.m. Worship 11:00-11:30 p.m. Worship 12:00-12:30 p.m. Worship 1:00-1:30 p.m. Worship 2:00-2:30 p.m. Worship 3:00-3:30 p.m. Worship 4:00-4:30 p.m. Worship 5:00-5:30 p.m. Worship 6:00-6:30 p.m. Worship 7:00-7:30 p.m. Worship 8:00-8:30 p.m. Worship 9:00-9:30 p.m. Worship 10:00-10:30 p.m. Worship 11:00-11:30 p.m. Worship 12:00-12:30 p.m. Worship 1:00-1:30 p.m. Worship 2:00-2:30 p.m. Worship 3:00-3:30 p.m. Worship 4:00-4:30 p.m. Worship 5:00-5:30 p.m. Worship 6:00-6:30 p.m. Worship 7:00-7:30 p.m. Worship 8:00-8:30 p.m. Worship 9:00-9:30 p.m. Worship 10:00-10:30 p.m. Worship 11:00-11:30 p.m. Worship 12:00-12:30 p.m. Worship 1:00-1:30 p.m. Worship 2:00-2:30 p.m. Worship 3:00-3:30 p.m. Worship 4:00-4:30 p.m. Worship 5:00-5:30 p.m. Worship 6:00-6:30 p.m. Worship 7:00-7:30 p.m. Worship 8:00-8:30 p.m. Worship 9:00-9:30 p.m. Worship 10:00-10:30 p.m. Worship 11:00-11:30 p.m. Worship 12:00-12:30 p.m. Worship 1:00-1:30 p.m. Worship 2:00-2:30 p.m. Worship 3:00-3:30 p.m. Worship 4:00-4:30 p.m. Worship 5:00-5:30 p.m. Worship 6:00-6:30 p.m. Worship 7:00-7:30 p.m. Worship 8:00-8:30 p.m. Worship 9:00-9:30 p.m. Worship 10:00-10:30 p.m. Worship 11:00-11:30 p.m. Worship 12:00-12:30 p.m. Worship 1:00-1:30 p.m. Worship 2:00-2:30 p.m. Worship 3:00-3:30 p.m. Worship 4:00-4:30 p.m. Worship 5:00-5:30 p.m. Worship 6:00-6:30 p.m. Worship 7:00-7:30 p.m. Worship 8:00-8:30 p.m. Worship 9:00-9:30 p.m. Worship 10:00-10:30 p.m. Worship 11:00-11:30 p.m. Worship 12:00-12:30 p.m. Worship 1:00-1:30 p.m. Worship 2:00-2:30 p.m. Worship 3:00-3:30 p.m. Worship 4:00-4:30 p.m. Worship 5:00-5:30 p.m. Worship 6:00-6:30 p.m. Worship 7:00-7:30 p.m. Worship 8:00-8:30 p.m. Worship 9:00-9:30 p.m. Worship 10:00-10:30 p
--	---	--	---	---	--	---