

Mansion tour scheduled in May

An opportunity to tour one of the remaining great mansions of Grosse Pointe, the Henry Stephens house on Lake Shore, is being offered by The Community House in Birmingham. A specially planned luncheon at Lochmoor Country Club will precede the home tour.

The home, which is the Junior League of Detroit's 1978 Decorator Show House, is being completely transformed by more than two dozen interior designers, each concentrating on individual rooms or areas of the lovely mansion.

Two separate dates for the Decorator Show House tour luncheon have been scheduled—the first on Tuesday, May 2, and the second on Thursday, May 11.

The group will leave The Community House (Bates and Townsend) by chartered bus at 11 a.m., with the Lochmoor Country Club luncheon scheduled for noon. Following lunch, the group will continue to the home with ample time to explore the architectural gem.

Even the six acre grounds, which overlook Lake St. Clair, will have received professional attention to make sure they look their prettiest for the visitors.

Brothers win science fair

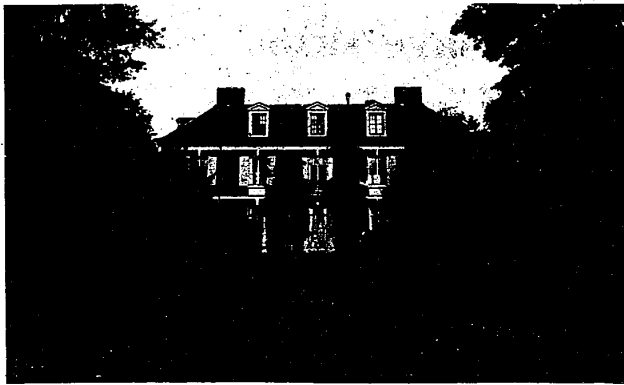
Two Southfield brothers won first prize at the 1978 Science and Engineering Fair of Detroit.

Mike and David Thottung also won supplemental awards from the Army, Navy, Air Force and computer organizations.

David, a sophomore at Southfield High School, won in the senior division with a project entitled "Programming Computers to Devise Strategy." A

computer was programmed to devise ways of winning games of Othello. Mike, an eighth grader at Lederle Middle School, won in the junior division for a project called "AYBASIC Program for Classifying Gastropoda." An outgrowth of his interests in shell collecting and computers.

The boys used computer terminals at the high school and were sponsored by teachers.



This 30-room Grosse Pointe mansion will be the destination for two May tours from the Community House. It is being completely redecorated as the Detroit Junior League 1978 Decorator Show House.

The French baroque mansion was built in 1913 for Mrs. Henry Stephens, widow of a great lumber and mining baron. The finely detailed home was designed by Charles A. Platt who also did the Russell A. Alger house, now the Grosse Pointe War Memorial. Constructed of beautiful Flemish bonded brick, the home features wrought iron work and detailed stone work. The house contains unique antique paneling from France as well as parquet and marble floors. The second floor

hallway will feature a photographic exhibition of Grosse Pointe's stately old mansions as well as a handsome display of antique silver. A pleasant addition to the house tour is the Junior League boutique which will offer silk flower arrangements, batik scarves, picture frames, jewelry, acrylic water color and oil paintings, gem racks, original weavings, needlework waste-baskets and baby quilts along with a variety of other items for sale. A festive Christmas corner is also planned,

as is a garden boutique with greenery and many varieties in pots and hanging baskets.

The Community House is taking reservations for this spring event now, with the afternoon package including round trip transportation from Birmingham, luncheon at Lochmoor Country Club, and the Junior League 1978 Decorator Show House tour. For further information, call The Community House, 644-5832. Reservations are limited.

Thursday, May 4, 1978

(S.F.)13C

Civic nature trail is open on Sundays

Visitors to the Southfield Civic Center nature area can take serene walks through quiet woods, watch wildlife in its natural habitat and observe hundreds of varieties of plants, trees and flowers growing in the wild.

The annual Sunday guided nature walks at 4 p.m. will continue through May 21 at the civic center nature trails, 26000 Evergreen. Tours are conducted by personnel from the park services division of Southfield Parks and Recreation Department as well as by guest guides. The nature trails are also open daily for unguided tours.

The nature area contains about 30 acres of Beech, maple, oak and hick-

ory hardwood forestland which provides an excellent environment for a wide variety of plants and animals.

Included in the one and one-half miles of trails are 18 varieties of trees and a host of wildflowers including Queen Anne's lace, night shade, black-eyed Susans, goldenrod, asters, meadow-sweet, dandelions, common buttercup, chicory and others.

Commonly-sighted birds are downy woodpeckers, bluejays, sparrows, mourning doves, scarlet tanagers, larks, swallows, robins and others. Turtles, frogs, fish and muskrats can also be seen along the trail.

"NOW"

IS THE TIME TO PLANT A
FULL GROWN
TREE"

Folks, I have specialized in shade trees and have supplied thousands of street plantings, industrial, schools, churches and residential. I feel that the right selection of a shade tree is perhaps the most important decision that a home owner is faced with in landscape planning. You may select your tree, tag it, have it planted at your convenience. Now ready for immediate delivery.

SHADE TREES

- MORaine LOCUST • GINKGO
- CRIMSON KING MAPLE • SWEET GUM
- SUGAR MAPLE • SUNBURST LOCUST
- NORWAY MAPLE • PIN OAK
- MOUNTAIN ASH • GREEN ASH

SHADE TREES

- MORaine LOCUST • GINKGO
- CRIMSON KING MAPLE • SWEET GUM
- SUGAR MAPLE • SUNBURST LOCUST
- NORWAY MAPLE • PIN OAK
- MOUNTAIN ASH • GREEN ASH

LARGE SELECTION OF EVERGREENS

Including:
Japanese Yews • PYRAMIDS
Arborea • Juniper • Pine
Douglas Fir • Spruce

LARGE SELECTION OF FLOWERING SHRUBS

Including:
Privet hedges
Azaleas • Rhododendrons
Ground Covers

REDWOOD CHIPS

3 Bags for \$11.00
SPRING SPECIAL

ORNAMENTAL TREES ALSO

- FLOWERING CRAB
- FRUIT TREES
- WISTERIA
- REDBUD
- DOGWOOD
- MAGNOLIA
- PURPLE LEAF PLUM
- WEEPING CHERRY
- JAPANESE MAPLE

Harold Thomas NURSERY

14925 Middlebelt
BETWEEN 5 MILE AND SCHOOLCRAFT
421-2888
OPEN DAILY 8-8

INTRODUCING The Naturals In West Bloomfield's Long Lake Estates.



Contemporary, open and spacious... All our models include innovative design features that are uniquely beautiful, and naturally different.

Built by Cambridge Development Company in the prestigious Long Lake Estates, our homes are filled with dramatic natural touches... alive with the creative

Cambridge Development Company

use of space, light and greenery. We combine luxury with function—and that makes Cambridge homes very special... unlike any others in the West Bloomfield area. Models open 1 p.m. to 5 p.m. daily and weekends. Closed Thursdays. model phone: 855-2440 office phone: 358-0232



Take Middlebelt Rd. to W. Long Lake Rd. Go west to Winnet Lane. Turn left to model.

WHEN YOU'RE ON THE MAIN FLOOR AT MODERN...

shopping for office supplies and equipment, come up and have a look at our UPSTAIRS! You'll find the finest in furnishings for home and office, sofas, chairs, paintings & graphics, lamps, clocks and much more.

All that, and weekly specials like this:

30 % savings

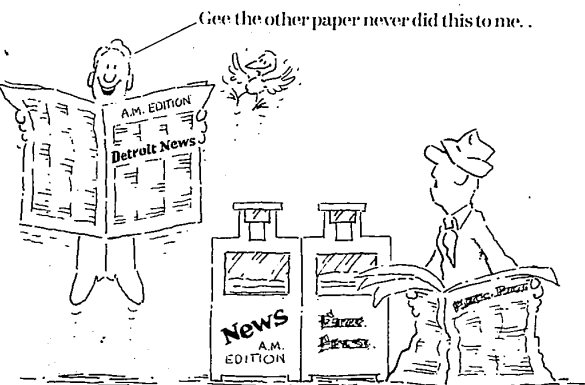
on all
Paintings & Graphics
in stock
one week only,
now through May 12

Modern Office, Inc.

642-5600
31535 SOUTHFIELD ROAD
(between 13 & 14 Mile Roads)
Mon.-Fri.: 8:00-5:00

100's of Prints, all sizes & shapes
Creative Crafts
725 S. Adams
Birmingham, 646-6967
Don't Miss Us
We have the nearest little Craft Shop around.
Creative Crafts
725 S. Adams
In the Arcade
Birmingham, MI.
646-6967

The Detroit News A.M. Edition. It will get you up in the morning.



The Detroit News A.M. Edition.
The first good news of the day.

On sale at newsstands at 6:30 every morning.

Old Fashioned Barn Raising

Saturday, May 7
10 AM until It's UP!

6' x 8' Barn
\$15988

8' x 8' Barn
\$19988

8' x 12' Barn
\$23988

Includes:
• Regular barn roof • 24" on-center framing • siding has 20 year guarantee • stronger than most metal sheds • all hardware, nails, materials, etc. included to build the barn