

<b>304 Farmington West Bloomfield</b> <b>W. BLOOMFIELD</b> <b>BRIGHT, AIRY AND COMFORT.</b> <b>ABLE describes this super three bedroom ranch with two full baths and many extras to make life easy for Mom...and only \$63,900.</b> <b>Century 21</b> <b>ROBEC PROPERTIES</b> <b>851-7711</b>	<b>304 Farmington West Bloomfield</b> <b>W. BLOOMFIELD.</b> Open Sunday 2-5. 3041 Beauty, look of Walnut, west of Farmington. Quality built, 4 bedroom Colonial, den, family room, custom decor, central air, fireplace, 2 full baths, \$105,900. Century 21 Janice Matheson. 851-5000	<b>306 Southfield Lathrup</b> <b>LUXURIOUS CONDO LIVING</b> Beautiful three bedroom condo, tastefully decorated. Private entrance, custom drapes & shutters, electric garage, 2 full baths. Full bath in dressing room area off master bedroom - one suite of the many, many places about this home. \$69,900. <b>Century 21</b> Gene Danks 2 <b>851-6700</b>	<b>306 Southfield Lathrup</b> <b>RETIREMENT SPECIAL</b> Attractive 1 bedroom brick bungalow on 120'x135' fenced lot. Hardwood floors, gas hot water heat, screened terrace, natural fireplace, attached garage. Call \$65,900 for details. <b>PALMER</b> Assoc. Inc. 1 <b>REALTORS</b>	<b>306 Southfield Lathrup</b> <b>COUNTRY LOT</b> WALLACE DR. - Face brick ranch, 2 bedrooms, large family room, covered terrace, automatic sprinkler, super sharp, immaculate condition. All utilities included. Good assumption or term to suit. \$39,900. <b>Century 21</b> TODAY 559-4488	<b>306 Southfield Lathrup</b> <b>BY OWNER.</b> Southfield quad level, 4 bedrooms, 3 full baths, hardwood floors, library, family room, many extras. \$105,000 or \$64,500. <b>CHARM GALORE!</b> LEE BAKER. This brick ranch has all 2 natural fireplaces, 3 master bedrooms; home could easily be converted to 5. Large Florida room overlooking beautiful landscaped lot, paved rec room with wet bar, appliances included, new carpeting throughout, separate dining room. Don't miss. Asking \$48,800. <b>Century 21</b> TODAY 559-4488	<b>306 Southfield Lathrup</b> <b>HANDYMAN'S DREAM</b> Brick Cape Cod in Southfield. Has 2 bedrooms, 2 baths and 2 bedrooms upstairs that require personalized finishing. Situated on an extra large lot. Features an attached greenhouse to enable you to enjoy summer all year round. Large garage. \$24,900. <b>REALLY WORLD PROFESSIONALS</b> <b>649-0200</b>	<b>306 Southfield Lathrup</b> <b>HORSE LOVERS</b> Two barns - 3 acres, fine family home. You must see to believe. - OPEN SUNDAY 2-5 2500 Ormond, east of Inland, north of 10 Mile. More information call Sharon. \$78,900. <b>DURBIN CO.</b> 357-3103 851-6000	<b>306 Southfield Lathrup</b> <b>LAND CONTRACT</b> <b>HANDYMAN SPECIAL</b> 8 Mile & Inland Rd. 3 bedroom ranch. Save \$18,000. Do your own repairs. \$11,900. \$100 down, at \$150 per month. Immediate occupancy. <b>SUMMIT</b> 427-3200 TRUCKINGHAM In Office Beautifully decorated Colonial 4 bedrooms, 2 1/2 baths. Shows by appointment only. Buyers only. \$35,000. 248-1100
---	---	--	---	--	---	--	--	---

# THE DURBIN COMPANY, Realtors



## AIR OF ELEGANCE

Happy family living begins in this gracious 4 bedroom super-size colonial. 2 full baths 2 powder rooms, central air. Multi feature including a great location. \$58,500 LFA  
851-6000



## TREES, TREES, TREES

Exciting custom colonial nestled on beautiful wooded lot with view of lake. Three bedrooms 3 1/2 baths, located in HIGH-GATE ON THE LAKE, \$86,000 CWH  
851-1300



## TAKE ADVANTAGE

You'll love this Contemporary tri-level home in Cranbrook Village Sub, 3 bedrooms, large family room, 2 natural fireplaces. 2 1/2 car attached garages, plus car-pot and Air Conditioning only \$59,900 RSO  
559-8181



## EXCITING CONTEMPORARY COLONIAL

Open and free-flowing floor plan, large master suite, beautiful family room with custom fireplace, vaulted cathedral ceilings first floor laundry, sun deck and central air. \$94,800 PWO  
851-1300



## LOVELY LAKE LIVING

All the amenities of the good life. Bloomfield Hills schools. Fine Lake Beach privileges, shopping nearby, friendly neighborhood. Call to see this three bedroom, two bath ranch. \$79,900 HFU  
851-6000



## GARDENER'S DELIGHT AND MORE

Lovely four bedroom, ranch with recreation room, and natural fireplace in living room. Gardener will enjoy apple tree, spruce and ROSES as well as being located near the park in this fine family neighborhood. \$51,500 SWH  
851-1300



## CASS LAKE WATERFRONT

Beautiful view of the lake from this cozy two bedroom home. Move-in condition. \$39,900 BUR  
363-7155



## LOWER STRAITS LAKEFRONT

Spacious four bedroom colonial with many extras. Located in one of the finest area subdivisions. Three fireplaces, recreation room, family room and more! \$155,900 EUD  
851-1300



## LARGE SPRAWLING CONTEMPORARY RANCH

Stainless steel beamed family room. Carpeted walls. 4 1/2 baths - large sunken Roman tub. 3 1/2 car garage. Heated 50 ft. pool and tennis court. Finished basement. Showplace in a prestigious location. \$265,000 SWT  
851-1300

## BACKS TO COMMONS

Located Farmington Hills, NINE MONTHS new! Four bedroom brick colonial with 2 1/2 baths, family room with fireplace. \$144,900 PFA  
851-6000

## BEAUTY & CHARM

Elegance is the keynote of this Architect's custom built ranch. 3 bedrooms, family room with fireplace, library, 2 full baths, central air, finished recreation room 2 1/2 car garage, covered brick terrace. Will price at \$100,000 MSB.  
559-8181

## UNION LAKEFRONT

Five bedroom family home with beautiful view of lake. Sandy beach. Beautifully treed lot. Maintenance-free exterior. \$79,900 LUD  
363-7155

## HARD TO FIND!!!!

Two residential sites in prime area of West Bloomfield. Each lot is over one acre. Can purchase as one 2 1/2 acre parcel. \$27,900 - \$29,900. SFT  
851-6000

## AWAY FROM IT ALL

Your own little love nest is what you'll have in this country setting. On 1/2 of an acre. 3 bedrooms and 1 1/2 baths, large family room with fireplace, 2 1/2 car garage and birds galore. Priced at \$39,900 ASK.  
559-8181

## NORTH REDFORD

Well maintained 3 bedroom home in area of next well kept homes. Convenient location. Perfect for small family. \$25,900 LFE  
851-6000

## SOUTHFIELD

Beautiful inground heated suite and across the yard of this ideal colonial off Bell Rd. Four bedrooms, 2 full and 2 half baths, large family room with fireplace and wet bar, library, finished basement, 2nd floor laundry, garage, sparkling system, central air. Excellent value at \$109,900. PWO  
559-8181

## VIEW ROLLING COUNTRYSIDE

From four bedroom brick bungalow to large premium treed cul-de-sac lot. Nestled into the hillside with terraced patio in rear. \$68,800 LWT  
851-1300

## COOLEY LAKE FRONT

Move in this completely furnished 4 bedroom lake front home. New deck last summer. Enclosed porch. Washer, dryer, refrigerator, store all way. HURRY-THIS WON'T LAST LONG. \$45,700 LFA  
851-6000

## DREAM RANCH

Beautiful landscaping in a picturesque setting. Country Kitchen, family room, 3 large bedrooms, 2 car attached garage only \$12,900 MSB  
559-8181

## BEAUTIFUL LOT

located among exquisite family homes in an area close to shopping, schools and expressways. \$21,000 KFE  
851-6000

## COUNTRY LIVING, CITY CONVENIENCE

Well planned rambling ranch is what you'll find in this custom built 2 bedrooms, 1 1/2 baths, large family living room with fireplace and large Country kitchen. Central air, large Florida room that looks out on huge surroundings. Circular drive with garage big enough for luxury models cars with storage space to boot. \$47,500 SSA  
559-8181

## JUST LISTED!

Beautiful bright ranch with three bedrooms, 1 1/2 baths, family room with fireplace. First floor laundry. Elementary school, bus, near transportation and shopping. Sprinkling system. \$64,900 TWE  
851-1300

## BLOOMFIELD ON THE LAKE

Franklin-built four bedroom brick colonial with over 3,000 sq. ft. of living area, huge kitchen, family room with fireplace. Magnificent landscaping with pool. \$119,900 VWA  
851-1300

## TREE BUILDING SITE

Much sought after - hard to find. Prime area of Farmington Hills. Building land in country side setting of fine homes. Good lot for multi-level. \$25,000 SWS  
851-1300

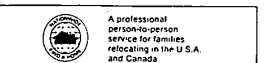
**DESIRABLE FARMINGTON HILLS AREA**  
Ranch home with three bedrooms, 1 1/2 baths, family room with fireplace. Two car garage. \$55,900 WUE  
363-7155

## HOLLY HILL FARMS

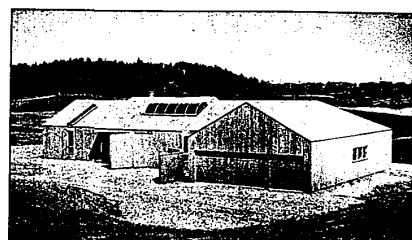
Beautiful three bedroom brick ranch on picturesque site in ideal Farmington Hills area. Open, free-flowing floor plan. Include apple acres. Great storage! Rock garden with fish pond. \$83,900 BWI  
851-1300

## HIGHGATE ON THE LAKE

Privileges on Twin Sun Lake. Beautiful Freedom Model on treed lot. Two years young! Terraced landscaping. Three bedrooms, 2 1/2 baths, step-down family room. First floor utility. \$82,500 GWR  
851-1300



A professional person-to-person service for families relocating in the U.S.A. and Canada



## WABEEK - ON THE GOLF COURSE

Outstanding, luxury class, four bedroom home; two full and two half baths. Spacious. Designed to meet needs of environmentally conscious home buyers. Innovative, efficient and proven energy conserving insulation system. \$239,500 CUI  
363-7155



## MOVE-IN CONDITION!

Lovely, spacious four bedroom bi-level with possibility of fifth bedroom. Family room with fireplace plus recreation room. Dining room doorways open to deck. Located on cul-de-sac in prime Wixom area. \$68,500 PWO  
851-1300



## LIGHT & AIRY

This desirable Bedford Villa brick colonial is awaiting your family. You may move immediately into this beautifully decorated, 3 bedroom, 2 1/2 bath, dream home only \$74,900 MSO  
559-8181



## WEST BLOOMFIELD TRI-LEVEL

Lovely home in prime area with three bedrooms, two full baths, family room with fireplace, screened in porch. Central air. Fenced yard. \$76,900 LFE  
851-6000



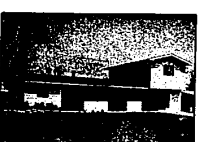
## LAKE FRONT

Immaculate three bedroom bi-level. Natural fireplace in family kitchen with doorwall leading to patio and redwood deck. Dock and pontoon, boat and garage. \$53,500 MFA  
851-6000



## SPACIOUS

Unbelievably roomy West Bloomfield Cape Cod with FIVE bedrooms, gathering room with fireplace, three baths, and lake privileges on MIDDLE STRAITS LAKE. \$69,900 GWR  
851-1300



## MOVE-IN CONDITION

Clean, extra sharp four bedroom, two bath two story home with family room at shines-up and ready for your private showing. \$41,900 PWA  
851-1300



## NOW YOU SEE IT - SOON YOU WON'T

Spacious five bedroom ranch with walk-out lower level made for indoor and outdoor entertaining and family living located on a prime ravine lot. Four sliding door walls open onto redwood deck. \$110,000 VWA  
851-1300



## BOTANICAL BEAUTY

Over two hundred tropical bamboo plants provide atmosphere for this great home for a growing family. Three bedroom ranch located on a beautiful large treed lot. SPACIOUS - including office and family room. \$37,500 WVE  
851-1300

Member-Birmingham Bloomfield Multi-List Service • Member-South Oakland County Multi-List Service • Open 9-9 • Member-UNRA Multi-List Service • Member-North Oakland County Multi-List Service

**851-6000 FARMINGTON**  
29920 Orchard Lake Rd.  
Just North of 13 Mile Rd.

**642-2700 BIRMINGHAM**  
1591 Woodward Ave.  
Just South of Long Lake Rd.

**528-1200 TROY**  
1055 E. Long Lake Rd.  
Just E. of Rochester Rd.

**559-8181 SOUTHFIELD**  
28200 Southfield Rd.  
Bet. 11 & 12 Miles

**647-5500 BLOOMFIELD**  
1591 Woodward Ave.  
Just South of Long Lake Rd.

**363-7155 LAKES AREA**  
7936 Cooley Lake Rd.  
Union Lake

**851-1300 WEST BLOOMFIELD**  
6346 Orchard Lake Rd.  
Just N. of Maple Road

# THE DURBIN COMPANY, Realtors