

# You can pet a deer, just for fun

Barnyards featuring farm animals and deer that can be petted and fed, fierce timber wolves and bobcats that can be viewed up close and giant dinosaur reproductions are just part of the lure of Michigan's animal attractions, according to Automobile Club of Michigan.

The Dinosaur Gardens and Prehistoric Zoo near Alpena contains no living creatures. It is filled with life-size reproductions of prehistoric dinosaurs and birds which inhabited the earth during that period. There are more than two dozen huge, lifelike creatures displayed in a heavily forested tract.

The exhibits took 38 years to construct and assemble. The huge brontosaurus, 80 feet long and nearly as high, took two and a half years to complete. The gardens are open daily 8 a.m.-7 p.m.

The Detroit Zoological Park in Royal Oak is well-known for its barf atmosphere, and it features more than 500 species of mammals ranging

## Travel

from great apes to penguins. A new aviary, the size of a football field, features a free-flight area, with more than 100 species of birds.

THE DETROIT ZOO has the largest collection of polar bears in captivity and one of the largest and most attractive penning areas anywhere.

Detroit's Children Zoo on Belle Isle draws thousands of youngsters each summer to view, feed and pet a variety of small farm animals.

The Stage CoachStop, a theme park on US-12 in the Irish Hills, includes a barnyard with horses, donkeys, goats and pigs. A train ride is available, and regularly scheduled, old-time western shows are featured on Main Street.

The Kensington Children's Farm, adjacent to Kensington Metropark near Milford, covers 100 acres bordering the Huron River. The barnyard has live animals to pet and feed plus pony rides and hayrides.

The Kalamazoo Nature Center, 7000 N. Westnedge Ave., features a variety of farm animals and is open 9 a.m.-5 p.m. Monday-Friday. There are nature trails, wooded areas and other wildlife.

THE KELLOGG BIRD sanctuary near Augusta has swans, ducks, geese, turkeys and peacocks that can be observed up close as they wander freely. Environmental displays may be seen at the multi-purpose reception center, where guided tours can be arranged.

Lansing's Potter Park Zoo, 1301 S. Pennsylvania, displays some 150 varieties of mammals and more than 200 bird species. The zoo has monkey and bird houses. It is open daily 10 a.m.-8 p.m.

Mott Children's Farm adjacent to Crossroads Village and the Huckleberry Railroad near Flint, has domestic animals in farmyard settings to watch and pet. Hours are 9 a.m.-5 p.m. Monday-Friday and 10 a.m.-5 p.m. Saturday and Sunday.

John Ball Park Zoo, Fulton and Valley Streets in Grand Rapids, includes 500 specimens of mammals, reptiles and birds, plus a large fresh-water aquarium. Adventure Land is a newly opened animal petting area. The zoo is open daily 10 a.m.-7 p.m.

Deer Park Fuland, US-31 at Russell Road north of Muskegon, combines animals to see and pet with amusement and train rides and a picnic area. Animals on display include monkeys, sheep, deer and more.

DEER ACRES, two miles south of Pinconning on M-13, features a wide variety of domestic and exotic animals displayed in storybook fashion. The entrance resembles a castle.

Saginaw Children's Zoo, part of the city's Rust Park complex, has more than 250 animals in addition to farm animals. There are skunks, ferrets, raccoons and rabbits plus an aquarium and reptile exhibit. Hours are noon-6 p.m. weekdays, noon-7 p.m. Saturday, Sunday and all holidays. The zoo is located at Rust and Washington Streets.

The Clinch Park Zoo at Traverse City features animals native to Michigan and includes a marine and bathing beach in its 10-acre location at the foot of the west arm of Grand Traverse Bay.

Visitors to the 50-acre Game Haven Wildlife Ranch near Wolverine can see the largest combined herd of buffalo and elk in the Midwest, plus 28 varieties of wildlife. Marquette's Presque Isle Park Zoo is located along Lake Superior. It features a deer herd, timber wolf cubs, coyotes, bear cubs and a bobcat. There is a large picnic area and visitors can take a scenic drive along the lakeshore.

## How to send news items

News releases, photographs or other information can be mailed to Ethel Simmons, entertainment editor, at 1225 Bowers, Birmingham 48012, or delivered to the Birmingham, Southfield or Rochester offices of our newspapers.

The phone number of the Birmingham office is 644-1100.

## echo park school

FALL APPLICATIONS NOW BEING ACCEPTED

VISITORS WELCOME  
Kindergarten, Pre-School and Mother Toddler Program

646-5590

4275 Echo Park Road  
Bloomfield Hills

## Space center shows history

Anything you ever wanted to know about space exploration—and more—will be found in the public exhibits and displays at the Michigan Space Center, located near Jackson.

Nestled at the southeast corner of Jackson Community College in a near-perfect sylvan setting, the center is marked by a Redstone rocket standing as a sentinel before the main building.

Visitors entering the center are greeted in the reception area and then easily find their way to an entrance which takes them through the Transition Tunnel to the main display area. The center of interest here is the original Apollo 9 which was returned to a safe splashdown after orbiting the earth.

Through windows of the spacecraft visitors can look into the lighted interior to see mannequins placed in the same positions the astronauts assumed in their trips outside the earth's atmosphere.

THE DOMED CEILING of the center structure is composed of ground and recycled newspaper, under which is suspended an actual parachute that brought one of the earlier space capsules back to earth. Other one-of-a-kind exhibits include a mockup of Mariner IV, the original of which flew around the planet Mars. A full-scale mockup of Surveyor III is also on display and is an exact, detailed replica of the

vehicle used in exploring the moon and left there.

The self-guided tour takes the visitor past lighted panels where space suits are on display, worn by James McDivitt of the Apollo mission, the Gemini mission space suit worn by Jack Lovell and Deke Slayton's space suit from the Mercury mission.

Also on display is the chimpanzee capsule, the Gemini trainer, an exhibit of food used by the astronauts in space and a display of the Russian spacecraft Soyuz link-up with the Apollo. Television sets placed conveniently throughout the tour show continuous films of the actual telecast during the moon exploration. Astronaut Ed White's walk in space and the Apollo liftoff.

The Astro Theatre, at the end of the tour, features a triple-screen presentation of space exploration in the auditorium which seats 80 persons. The center opened in May 1977 at a structural cost of more than \$750,000. The value of the exhibits, however, far surpasses that figure.

SPACE CENTER Director Charles E. Gass stated that some of the exhibits are on a loan cycle, so the exhibits will be changing from time to time and other new exhibits will be added. He pointed out that the center also serves to honor those Jackson and Michigan astronauts who were pioneers in the nation's space program.

## HEXCELS ON SALE DURING OUR SUMMER IN STORE WAREHOUSE STYLE SKI EQUIPMENT SALE

Brand new 1977-78 Hexcel skis some marked Pro- these skis have slight cosmetic imperfections that do not affect performance.

FULL FACTORY WARRANTY

MOTIVATORS  
Orig. \$188.00

DOOR BUSTER PRICE  
**\$124**  
SIZES 150/160/170/180/185

ORIG. \$265  
PRIMER CORD **\$188**

ORIG. \$265  
SUPER COMP. **\$168**

ORIG. \$255  
SUNDANCE **\$158**

ORIG. \$240  
COMP. **\$158**

ORIG. \$148  
J. COMP **\$88**

## Bavarian Village

SKI SPECIALISTS

- BLOOMFIELD HILLS: 2540 WOODWARD at Square Lake
- BIRMINGHAM: 101 TOWNSEND corner Placer
- LATHRUP VILLAGE: 28645 SOUTHFIELD at 12 Mile
- LIVONIA/REDFORD: 14211 TELEGRAPH at Jeffries Fwy.
- MT. CLEMENS: 1216 S. GRATIOT North of 16 Mile
- EAST DETROIT: 22301 KELLY RD. Bgt. 8 & 9 Mile

OPEN DAILY 10 TO 8 SAT. 10 TO 6 SUN. CLOSED SUNDAY  
BANKAMERICARD VISA MASTER CHARGE DINERS AMERICAN EXPRESS



NEW CREATION on spectacular acreage within City of Bloomfield Hills. A Robert Mitchell Contemporary combines 5000 sq. ft. with decks and doorways to enjoy the rugged terrain. Needs final touches. 647-5950. \$315,000.



SIZE AND BEAUTY combine in this large Rochester Colonial on raised setting. Immaculate, tastefully decorated interior offers library or fifth bedroom, huge L-shaped family room with fireplace and doorways to large redwood deck, gas BBQ and sloping yard. Breakfast nook has table space and sit-up counter to Gourmet Kitchen. First floor laundry, garage openers, swim club. 651-8850. \$119,900.



CUSTOM CONTEMPORARY with room to relax on over four acres and in spacious 4 bedroom interior. Fireplaced family room plus finished rec room with wet bar. Central Air, Lake Privileges. 689-8900. \$135,000.



SPACE AND QUALITY in this Lathrup Village home which features Central Air, 2 1/2 baths, excellent family room with fireplace and delightful Florida room plus basement and many other fine features. 557-6700. \$78,500.



LONG, LEAN AND HANDSOME! Farmington Hills Rambler offers 4 generous bedrooms, huge family room, gallery, sewing room, updated kitchen and 3 car attached garage. Value! 557-6700. \$78,000.



FRANKLIN ESTATE. Over two acres of privacy with 270' river frontage and lovely pool setting. Spacious Early American Ranch features oversized rooms, pegged Oak flooring, room and library with built-ins. 40' bank of doorways in Flagstone Florida room, super kitchen, greenhouse, etc. 626-9100. \$210,000.



UP-DATED CHARM near Adams, Derby schools. Delightful inside with rustic family room with fireplace and wet bar, library, rec room, country kitchen, 2 1/2 baths. Central Air, gorgeous yard. 646-6000. \$106,900.



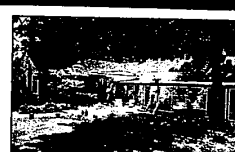
HOUSE BEAUTIFUL. Total appeal in this immaculate 4 bedroom, 2 1/2 bath home. Country kitchen has double pantries. Fireplaced family room (with gas grill) opens to two patios in lovely yard. 626-9100. \$94,900.



RAMBLING BI-LEVEL on ravine lot with stream in Southfield; nature paradise with trees, trees! Scenic view from double picture window in living room. The patio is a dream! 557-6700. \$78,000.



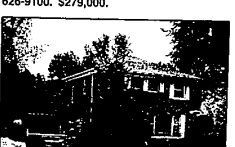
TAKE A LOOK AT value with lots of space. A clean, neat home in desirable Southfield has 4 generous bedrooms, 2 1/2 baths, large kitchen with pantry, privacy patio. 557-6700. \$62,900.



PALATIAL Tudor on nicely groomed acreage in Franklin. Breathtaking, open foyer and living room with vaulted ceilings and balcony-bridge. 5 bedrooms, 5 baths, library. Central Air and...! 626-9100. \$279,000.



UP-DATED CHARM near Adams, Derby schools. Delightful inside with rustic family room with fireplace and wet bar, library, rec room, country kitchen, 2 1/2 baths. Central Air, gorgeous yard. 646-6000. \$106,900.



GARDEN GROUNDS enhance this very sharp Franklin Valley home. Enjoy summer with Central Air, double gas BBQ on gas-lantern patio. Glass-door fireplace in family room. Garage openers. 851-8100. \$88,900.



HIDEAWAY on large lot of natural beauty in Beverly Hills. Attractive 3 bedroom, 1 1/2 bath Ranch with paneled-beamed family room, fireplace, office, 2 car garage with openers. 646-6000. \$56,500.



Chamberlain REALTORS®

- BIRMINGHAM 646-6000
- BLOOMFIELD HILLS 647-5950
- WEST BLOOMFIELD 851-8100
- FARMINGTON HILLS-FRANKLIN 626-9100
- SOUTHFIELD-LATHRUP VILLAGE 557-6700
- ROCHESTER 651-8850
- TROY 689-8900