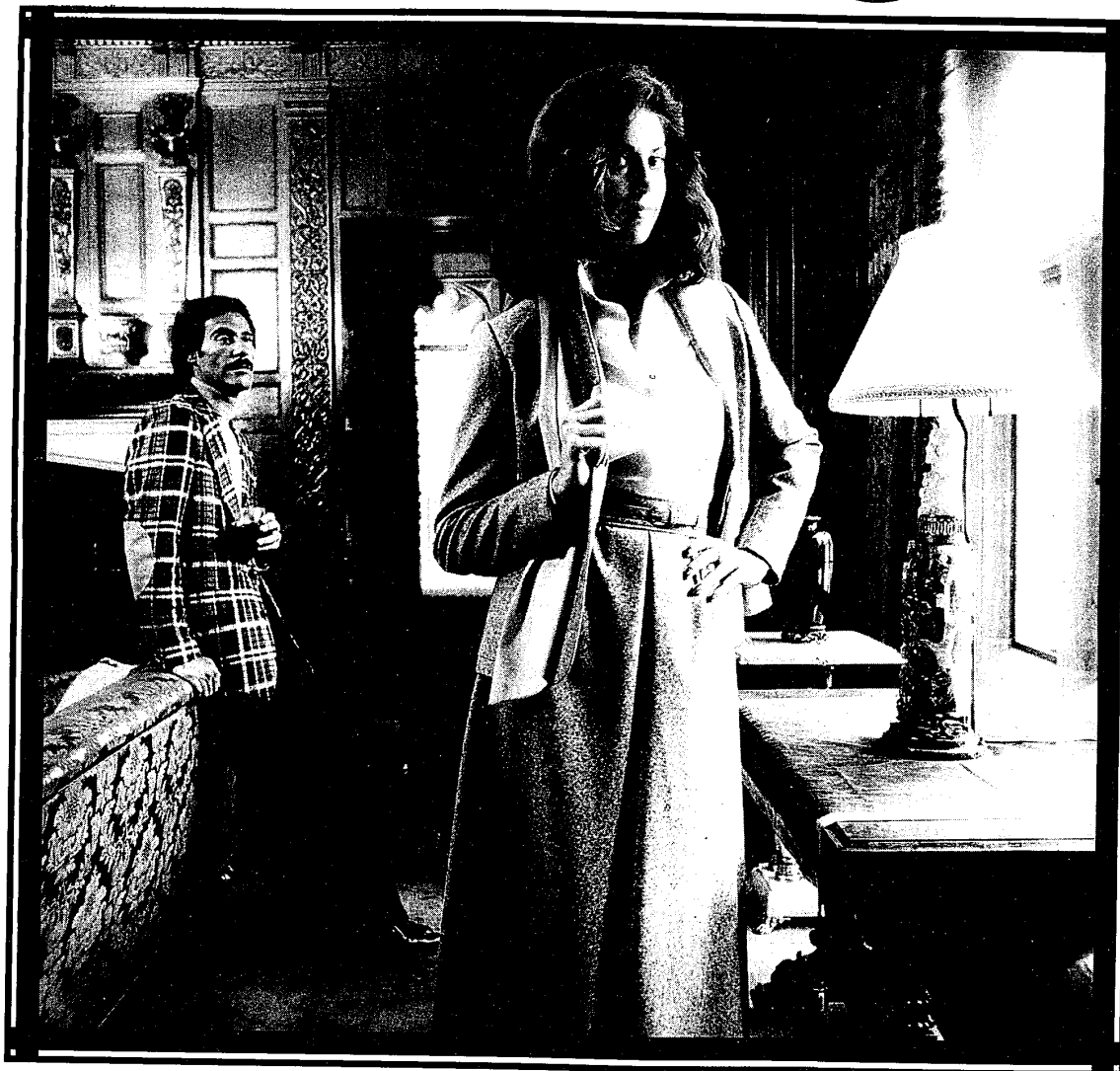


Fall feelings...



This fall is much more than a look. It's feelings . . . very special ones that have been captured in famous men's and women's designer's styles. And you can find just the right expressions at so many Northland stores. Sensual blouses, gentle and plunging. Yet tweeds couldn't be bolder. Skirts are shy and slim. (But they'll show a leg or two.) Tapered pants come to a delicate end just at the ankles. And color is expressed in rich harvest hues. For chilly days, his or hers jackets say big, and feel warm. Autumn is a season of mixed feelings. Fall into them at Northland.

Specially Yours
Northland

Greenfield at Eight Mile Road.

