

## 2 from Birmingham attend workshop

Two members of the Birmingham Village Players, Barbara Underwood and Don Jackson, are among scholarship winners participating in a workshop conducted by the Stratford Players, noon-5 p.m. next Wednesday at Orchestra Hall in Detroit.

The workshop—part of a three-day residency program—is sponsored by Friends for Orchestra Hall, assisted by a grant from the Michigan Council for the Arts, in association with the Stratford Shakespearean Festival Foundation.

Fifteen scholarship winners drawn from members of performing theater groups in the greater Detroit area are taking part in Wednesday's workshop.

On Thursday, Dec. 14, suburban high school groups will be in the audience for a matinee performance of the play "Rogues and Vagabonds," a play chosen for young adults pursuing an interest in theater.

Planning to attend the performance are classes from Andover High in Bloomfield Hills (teacher, Marian Ormerby); Clarendonville High, Livonia (teacher, Bob Gregory); and Plymouth and Westland Highs.

"ROGUES AND VAGABONDS" traces the history of acting from its emergence as a profession in the 18th century through to the knight of actor Henry Irving at the end of the 19th century.

The Dec. 14 show is "to give the youngsters a feeling of being part of theater as it has lived and suffered," said Renee VanDewater, president of Friends for Orchestra Hall.

The Stratford group will be the first group to do drama on the renovated Orchestra Hall stage. Thirteen actors and a stage manager will be coming for the program.

"It will be a master class on theater craft. Participants are asked to come with a prepared scene," Ms. VanDewater said.

After an hour of physical and vocal warm-up and exercise, each actor will present a scene.

"Other people are welcome to come as auditors, to watch the technique of building a character," she said. "Amazing things happen. Actors come out looking better than they ever thought."

### Bill Monroe concert set

Bill Monroe, originator of Bluegrass music and member of the Country Music Hall of Fame, will appear in concert at the Lincoln High School Auditorium, Nine Mile and Federal, Warren, Saturday, at 8 p.m.

Afterwards, the players, the auditors and the Stratford guests will engage in discussion.

Participants are all members of performing companies in the Detroit area. The program concentrates on companies because Orchestra Hall can be of more benefit that way, according to Ms. VanDewater.

College repertory groups have their own educational and workshop facilities, she pointed out. "We're in a unique position to do this kind of service for local theater companies."

Monroe will be backed up by his band, the Bluegrass Boys, led by Kenny Baker, considered by some to be the finest and most tasteful Bluegrass fiddler in the country.

## New BOOKS

**6 BEAUTIFUL 8 1/2 x 11 ILLUSTRATED "COFFEETABLE BOOKS" from BERNARD EDELMAN only 4.95 EACH-ASK FOR THEM**

**SIDEWALKS OF MY MIND  
MOOD & RHYTHM  
NO SUN WITHOUT SHADOWS  
THE EDGE OF THINGS  
SHADOWS & DREAMS  
BERNARD EDELMAN'S POEMS**

Book Distributors  
32200 Capitol  
Livonia 5225-1500

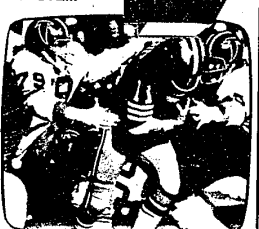
Distributed by

Marte Distributing  
27222 Plymouth Rd  
Redford 937-8400

### GARAGE DOOR OPERATORS

**Genie 450D**  
CRYPTAR II DIGITAL CONTROLS  
\$175.00 installed  
1 Year Warranty—Any Suburb  
ALLIANCE AUTOMATIC DOOR CO.  
358-3833 SOUTHFIELD

### "THE STARBEAM SYSTEM"



Giant Screen TV for Homes and Businesses. Package includes TV receiver, 4 1/2 FT. Screen (5 1/2 and 6 1/2 FT. Screens available). Remote Control Unit. Glass Ground Lenses (Not Plastic) Complete Package including installation.

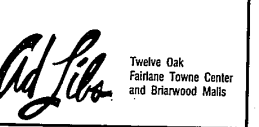
The Best Quality on the Market, bar none, at a price you can afford.  
**Call Now Michigan Cinema**  
WEST OAKLAND COUNTY 532-5716 EAST SIDE 792-7400  
Financing Available Mon. - Sat. 10 a.m. - 8 p.m.

### Say "Happy Times" This Christmas



**BULOVA CARAVELLE**  
The Perfect Pocket Watch

See Our Large Selection from \$39.95  
Use Our Christmas Layaway Plan  
\$47.95



**Ad Lib**  
Twelve Oak  
Fairlane Towne Center  
and Briarwood Malls

### URGENT PUBLIC AUCTION!

CONTAINER HIJACKED IN LONDON, ENGLAND CONTAINING PERSIAN AND ORIENTAL HAND-MADE RUGS.

Portions of the stolen rugs have been recovered by Metropolitan London Police. We have been authorized by the London agent to immediately offer rugs for sale in order to satisfy the creditors. Please note sizes range from 2x2 to 10x14.

THIS AUCTION WILL BE HELD TUESDAY, DECEMBER 12, AT 8 P.M.

**HOLIDAY INN BANQUET ROOM**  
30375 PLYMOUTH RD. LIVONIA

Rugs on view one hour prior to sale. Terms: Cash or Check

**EMBASSY AUCTIONEERS, INC.**  
Licensed and Bonded

# ONE STOP SAVES MONEY!!

See Pine Cashway for Money Saving Values on Lumber, Plywood, Wall Paneling, Kitchens, Ceilings, Shelving etc.

**SLASH FUEL BILLS**  
**YEAR ROUND! WITH In-Sider Storm Window**  
Installs from inside. Duct-seal. Cuts heat loss through windows up to 80%. Saves heating costs now. Cooling costs in summer. Clear, rigid plastic. Snaps on and snaps off at every time.

**PANEL TODAY**  
**PARTY TONIGHT**  
It's the real thing!  
**WAYSIDE INN**  
Real Hardwood Veneer Plywood Paneling. New grain depths... new color clarity... new beauty for any wall... anywhere.  
**1/4" Weldwood Plywood Paneling**  
PRICED FROM \$9.95 4x8 SHEET  
**THINNER WELDWOOD PANELING WOODGRAIN**  
PRINT ON 3/8" LAMINATED PLYWOOD  
11 VARIETIES \$6.98 4x8 SHEET  
STARTING AT \$4.95  
**OAKLEAF**  
PRINT ON 1/2" HARDBOARD  
3 COLORS \$4.39 4x8 SHEET  
**1/4" ABITIBI HARDBOARD PANELING**  
WITH EXCLUSIVE MARK-GARD FINISH  
Rough Sawn Patterns From \$9.70  
Woodgrains From... \$8.45  
Brick, Stone, Stucco... \$14.25

**A NEW ARMSTRONG CEILING FOR LESS THAN...**  
Choose from patterns shown below and do a 12x12 panel for less than \$39 (ceiling panels only).  
Grenoble \$14.99 12' x 12' tile  
Festive \$11.99 12' x 12' tile  
Flourish \$12.15 12' x 12' tile  
Save big on grid systems, lighting fixtures, and luminous panels, too.

See the amazing Deluxe **Black & Decker Workmate**  
Dual Height All-purpose work center and vise.  
It's a foldaway, portable workcenter, giant vise and sawhorse all in one! Features a 28" vise and rules measure up to 21" diagonally. A good power tool work center. Designed to grip tubular objects tightly.  
Secures irregular or circular shapes.  
Makes cutting easier, safer, more accurate.  
Holds large, hard-to-handle pieces.  
Vise bars adjust to take wedge shapes.  
Strong and rigid, yet light and completely portable.

**Studs**  
Economy 7" 69¢  
Economy 8" 85¢  
Stud Grade \$1.35

**I Love My Meritall Kitchen!**  
You'll love a Homestead Oak kitchen.  
Meritall's new "leisure-time" interiors feature vinyl surfaces throughout that wipe clean with the touch of a damp cloth. No need for shelf paper, cleaning is a snap. That means you'll have more leisure time to enjoy with Meritall's new Homestead Oak cabinetry. Meritall gives you the custom look at affordable prices.  
**SAVE 25% OFF FACTORY LIST**  
PROMPT 2-DAY DELIVERY

**the Forever door**  
AN ENGINEERING ACHIEVEMENT!  
Guaranteed not to rot, dent, split or warp for as long as you own your home.  
Solid... 4 1/2" thick heavier than aluminum doors.  
Self-cleaning... no need to oil or paint.  
6 1/2" more free ventilation than aluminum doors.  
Manufactured of polypropylene... a virtually indestructible material!  
**\$139.95 ONLY**

**COMPARE R VALUE**  
The larger the R value, the more you'll save on your fuel bill. 6" of cellul-fib has an R-32 value. It takes 10" of fiberglass to equal this.  
**COMPARE PRICE**  
Not just by the bag, but for the coverage you need. A bag covers up to 33 sq. ft. 5" thick, gives you an R-19 value for just  
**\$4.69 PER BAG**

**DELUXE MODEL** \$67.88\*  
**SINGLE HEIGHT STANDARD MODEL** \$39.95\*

**1/2" CDX SHEATHING PLYWOOD**  
1/2" x 4x8 \$8.95  
**SELF-SEALING ASPHALT SHINGLES**  
\$6.79 per square

**NOW!! Thermo-Shield Cellu-Pink Insulation Is Available at Pine Lumber**  
**COMPARE R VALUE**  
The larger the R value, the more you'll save on your fuel bill. 6" of cellul-fib has an R-32 value. It takes 10" of fiberglass to equal this.  
**COMPARE PRICE**  
Not just by the bag, but for the coverage you need. A bag covers up to 33 sq. ft. 5" thick, gives you an R-19 value for just  
**\$4.69 PER BAG**

**Put a Storm Door on Your Patio Door and Save Money.**  
**\$109.95\***  
Feather-lite This remarkable new Storm Door acts as a thermal insulator when installed over your existing patio door.  
Buttons on the coldest opening in your house: your patio door.  
Seals out cold and drafts around your patio door.  
Pays for itself through savings in heating and air conditioning.  
Relieves icy and condensation on your patio door.  
Made with tempered safety glass.  
Fits 5' x 6' and 6' x 6' standard openings.  
Easily installed by anyone.  
Available in Perma-white and Bronze finishes.

**1/4" LAUAN UNDERLAYMENT**  
4'x8' SHEET \$5.95  
**5/8" Particle Board Underlayment**  
4'x8' Sheet \$5.29

**HANDY BOARDS**  
No. 2/STANDARD WHITE WOODS

	REG. PRICE	SALE PRICE
1"x4" R/L	.19 lin. ft.	.15 lin. ft.
1"x4" S	.24 lin. ft.	.24 lin. ft.
1"x6"	.39 lin. ft.	.33 lin. ft.
1"x8"	.47 lin. ft.	.40 lin. ft.
1"x12"	.59 lin. ft.	.52 lin. ft.

**CONSTRUCTION GRADE LUMBER**

	10'	12'	14'	16'	18'	20'
1"x4" 2x4	2.38	2.63	3.09	4.01	4.41	4.94
1"x6" 2x6	3.12	4.01	4.85	5.50	6.88	7.26
1"x8" 2x8	3.41	6.09	6.17	7.21	7.62	10.40
1"x10" 2x10	4.45	7.73	9.85	10.83	11.27	12.56
1"x12" 2x12	7.73	9.98	10.93	12.92	15.97	18.53

**PRESERVATIVE PRESSURE TREATED LUMBER**  
FOR FENCES, DECKS AND MANY OTHER USES

SIZE	8 FT.	10 FT.	12 FT.	14 FT.	16 FT.	18 FT.	20 FT.
2"x4"	2.24	2.74	3.56	4.28	5.31	6.39	7.20
2"x6"	3.41	3.98	5.51	6.52	8.21	10.53	12.15
2"x8"	4.10	5.22	8.42	8.82	10.22	12.42	15.20

MANY OTHER LENGTHS, WIDTHS AND THICKNESSES AVAILABLE

**FURRING STRIPS**  
BETTER GRADE

1"x2"x8'	39¢
1"x3"x8'	48¢
2"x2"x8'	72¢

SOME ITEMS MAY NOT BE AVAILABLE AT ALL LOCATIONS

### WINTER HOURS - ALL LOCATIONS

MONDAY THRU FRIDAY 8 A.M. to 5:30 P.M.  
SATURDAY 8 A.M. to 5 P.M.; SUNDAY 10 A.M. to 3 P.M.

MT. CLEMENS	UTICA	WEST SIDE	LINCOLN PARK
5 S. GROESBECK South of Cass Ave. 469-2300	48075 VAN DYKE Bet. 21 MI. & 22 MI. 739-7463	12222 INKSTER RD. Bet. Plymouth & Schoolcraft 937-9111	3255 FORT ST. Bet. Southfield & Golderd 386-5177
YPSILANTI	WATERFORD TWP.	BRIGHTON	SOUTHFIELD
626 N. HURON 481-1500	7374 HIGHLAND RD. On M-59 Bet. Airport & Williams AVE. E.D. 666-2450	525 MAIN ST. 1 MI. W. of Grand River 227-1831	22800 W. 8 MILE 1 Mile E. of Telegraph 353-2570

ALL ITEMS CASH & CARRY - SALE PRICES MARKED WITH \* - GOOD DEC. 7 THRU DEC. 10

**FULL LENGTH GRADE PLYWOOD**  
4'x8' Gold 1 Side

1/4"	\$9.98
3/8"	\$12.80
1/2"	\$14.96
5/8"	\$17.64
3/4"	\$20.48

**ROUGH SAWN FIR SIDINGS**

1-1/2" x 4" O.C. 3/8" THICK	\$17.70
4"x8"	\$21.30
1-1/2" x 6" O.C. 3/8" THICK	\$17.70
4"x8"	\$21.30
REVERSE BOARD & BATTEN 1 1/2" O.C.	\$18.35
4"x8"	\$22.40

1978 PINE LUMBER CASHWAY