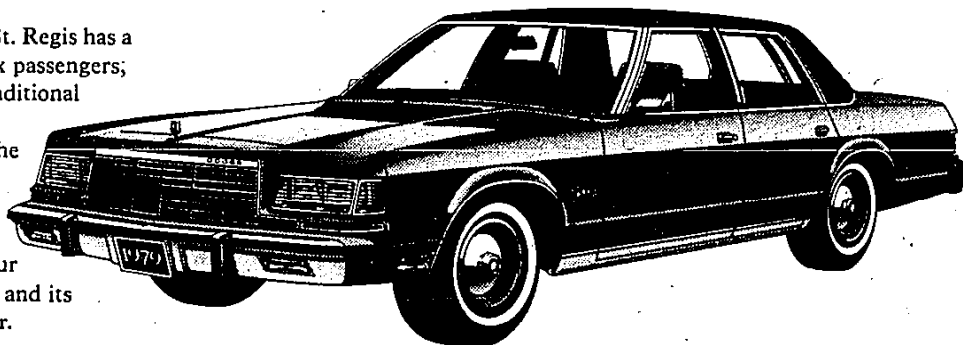


THE DODGE ROADSHOW IS IN TOWN.

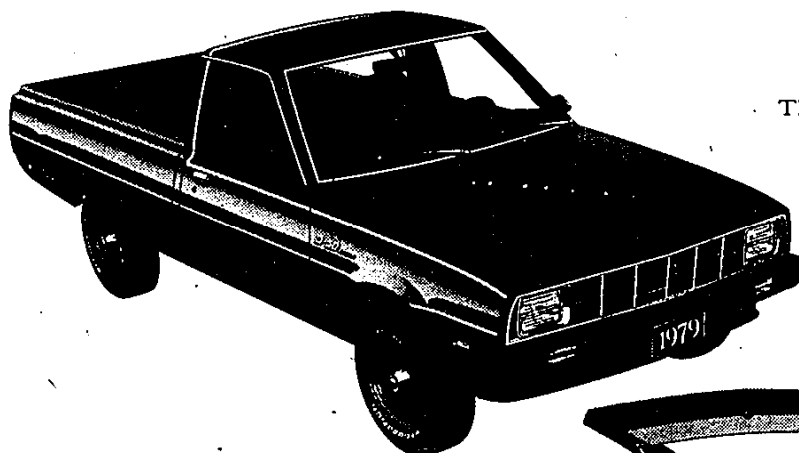
DODGE ST. REGIS.

The Saint is marching in! The lean new St. Regis has a 118.5-inch wheelbase, ample room for six passengers; and all the comfort and options of the traditional full-size car, but with modern efficiency and technology. The EPA estimates for the St. Regis with 225 Super Six two-bbl. engine and automatic transmission are 23 MPG highway, 17 MPG city. Your actual mileage may vary according to your driving habits, the condition of your car, and its equipment. California estimates are lower.



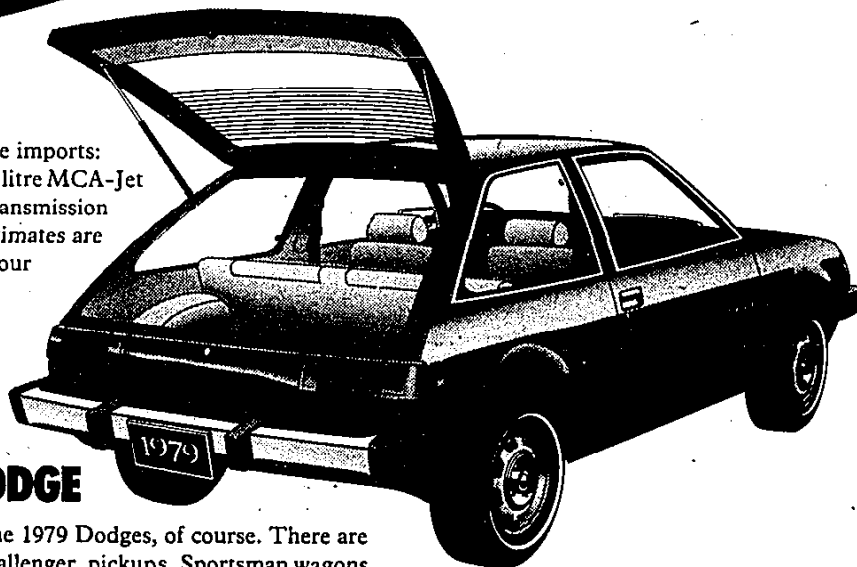
DODGE JR.

The newest Adult Toy is only 185 inches long and weighs just 2555 pounds, but still can tote up to 1400 pounds of people and cargo. The 2.6 litre MCA-Jet engine and five-speed manual transmission really make this little D-50 Sport pickup scoot — with 29 MPG on the highway, 21 MPG in the city. (EPA estimates. Your mileage may vary depending on your driving habits, the condition of your truck, and its equipment. California estimates are lower.) Lots of legroom, 4.6 cubic feet of storage behind the seat — this import from Japan has a lot to look at!



DODGE COLT.

There's a new addition to the Colt stable of Japanese imports: the new Colt Hatchback, with front-wheel drive, 1.4 litre MCA-Jet engine, and the amazing 4 x 2 Twin Stick manual transmission that gives you two driving modes. (And the EPA estimates are great: 44 MPG highway, 32 MPG city. Of course, your actual mileage may vary according to your car's condition, its equipment, and your driving habits. California estimates are lower.)



IT'S ALL PART OF THE BIG DODGE ROADSHOW.

These are just a few of the 1979 Dodges, of course. There are many more: Omni, Aspen, Diplomat, Magnum, Challenger, pickups, Sportsman wagons, vans, and all the Adult Toys.

SEE ALL THE NEW DODGES AT THE AUTO SHOW.



See the Dodge Exhibit at the Annual Detroit Auto Show at Cobo Hall January 13 thru January 21