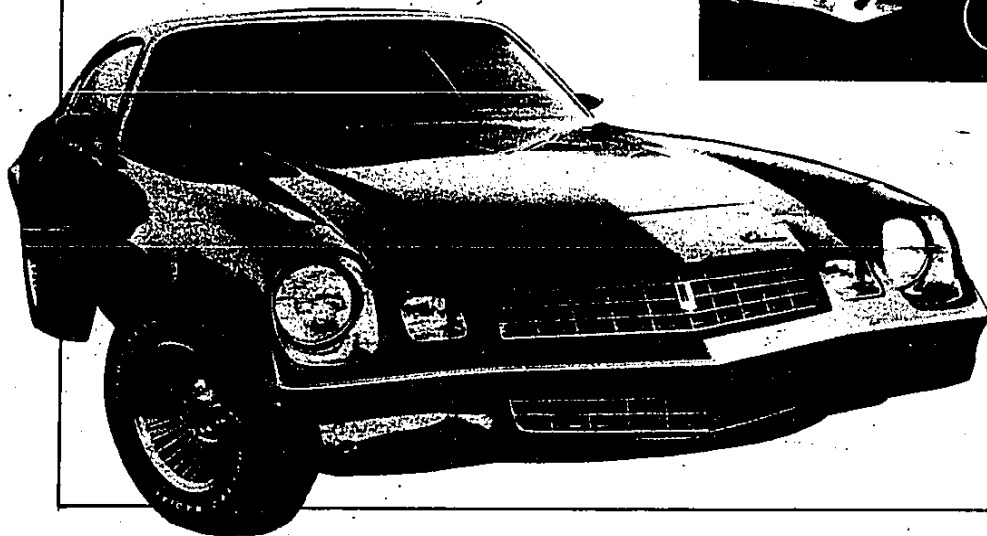
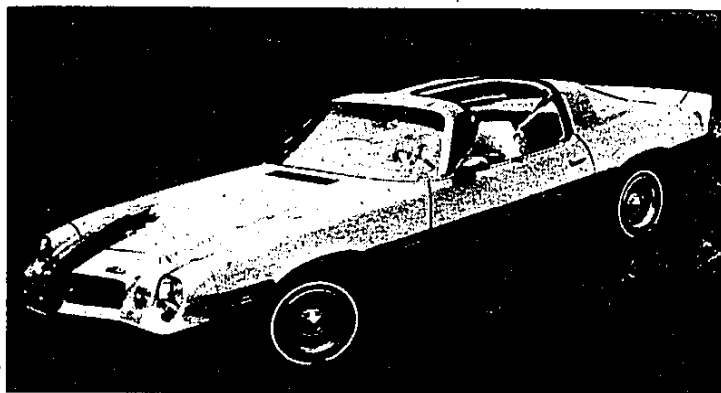


Berlinetta — the top-of-the-line Camaro

The top of the 1979 Camaro line is the brand new Berlinetta model.

It has unique exterior pin striping, two-tier grille treatment, black painted rocker panels, body-color styled wheels and special rear lamp styling. The rear end features bright horizontal moldings in the tail light area and adjacent panes, as well as a special fuel filler door. Berlinetta's new custom interior and bucket seats are optional on all the other Camaro models.



In a move designed to improve fuel economy, standard Camaro models are equipped with the 4.1 litre engine.

Optional powerplants for the standard Camaro line are 5.0 and 5.7 litre V-8s.

Among new options for the Camaro line is an electro-clear window defogger similar to one available on standard size Chevrolets. It replaces the forced air type.

An improved anti-theft steering column lock is included, and there are four new AM/FM radio options.

MAZDA

See what makes
Mazda's GLC
a great little car

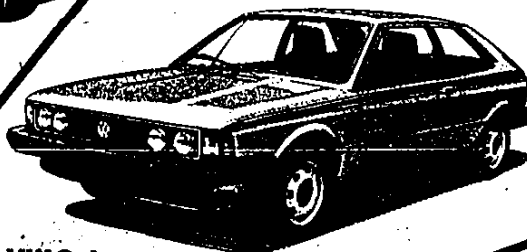
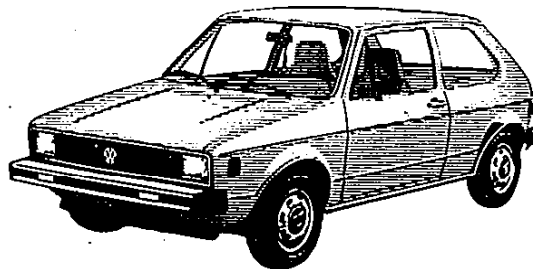


*EPA estimates, based on 5-speed transmission. Your mileage may vary depending on how and where you drive, your car's condition and optional equipment.



VOLKSWAGEN

Once we were famous for making a car that looked ridiculous. Now we make one that makes the others look ridiculous.



VW Scirocco.

**VOLKSWAGEN
DOES IT
AGAIN**



PEUGEOT

The Peugeot 604 gives you the engineering of a Mercedes-Benz, the handling of a BMW, the elegance of a Jaguar, and a level of comfort superior to all of them.



Autobahn Motors Inc.

1765 S. Telegraph
Just N. of Square Lake Road

338-4531

