

# Turnabout

## Riegle rouses Kennedy fever

U.S. Sen. Donald Riegle predicted a Ted Kennedy candidacy for president within a month. He also called the Carter Administration's performance on the energy problem "dismal" before a suburban audience this week.

Riegle, Michigan's senior senator, surprised the Livonia Chamber of Commerce breakfast meeting with his blunt criticism of Carter, who headed the Democratic ticket when Riegle was elected in 1976.

Admitting he had no inside information, Riegle nevertheless said he believed Kennedy, D-Mass., will decide within a month to make a bid against the Democratic White House incumbent.

RIEGLER SAID Kennedy is "moving measurably" into the White House race and is considering several factors that will bear on his decision.

One is that the Democratic Party will have 24 of its 34 seats up for re-election in 1980 when Carter is expected to run for a second term. With Carter's low support in the national polls, there is a possibility some of those senate Democrats may be defeated.

Riegle said that Kennedy, with 16 years in the Senate, is hard-working and serious and could bring many talented people to the administration as president.

But Gov. Jerry Brown of California is also in the race, Riegle said.

The only thing that could prevent Kennedy from getting into the race is a "breakthrough" on the issue of "that would improve Carter's standing in the polls. Currently, only 25 percent of those polled believe the president is doing a good job.

RIEGLER WAS critical of Carter's handling of the energy problem. The federal Department of Energy has had 19,000 employees and a 10.9 billion budget since it was created in early 1977, he said.

Naming James Schlesinger as DOE secretary was "one of the worst mistakes" Carter has made, the senator claimed.

He said DOE has been a "dismal performance" and "it's a mess." Although there has been a lot of study and work on the energy problem, it is hard to get accurate information from the energy department.



SEN. DONALD RIEGLE  
Running from Carter?

**Naming James Schlesinger as DOE secretary was 'one of the worst mistakes' Carter has made.**

**'It's an outrage you and I can't get the straight facts from the Energy Department.'**

— Don Riegle

"It's an outrage you and I can't get the straight facts from the Energy Department," Riegle said.

THE SENATOR also expressed sympathy for Chrysler Corp., the nation's third largest auto maker. Chrysler is asking up to \$1 billion in federal tax credits to improve its financial position.

Riegle stressed the economic facts of life if the government fails to help Chrysler and the company eventually is bankrupt. Chrysler provides 600,000 jobs, and its closing would have an \$11 billion impact on the federal budget.

That would consist of \$9 billion in lost taxes and \$2 billion in welfare and unemployment transfer payments, Riegle said. Chrysler has 80,000 employees in the Detroit region.

He said a Chrysler closing would be a "devastating blow" to Michigan and that Gov. William Milliken is becoming more aware of the problem as it relates to the state's economic and tax situation.

## Antiques on parade this week

Detroit Fall Antique and Collectible Show sale will be held through Sept. 16 at the East Eight Mile Armory, Detroit.

The collectible series of Norman Rockwell trays, plates and bells will be featured by Marilyn Peters of Kitzler's Collectibles. All are signed, limited editions.

Along with the collection of Rockwells will be a display of collector plates, figurines, bells and thimbles. Most note worthy are LLadra figurines from Spain, many of them difficult to obtain as they are retired editions.

Kitzler's offers a service with their extensive selection of frames, cases, hangers and easels for all thimbles, plates and figurines.

The Basket House will present American hand-blown art glass baskets from 1860 and 1870. Most of the pieces are one-of-a-kind.

Visitors interested in having their gems appraised may visit Philip Ronzone of Bollingbrook, Ill., who will be at this year's show.

The show will be the place to see hundreds of dealers under one roof, displaying thousands of antiques and collectibles priced from 50 cents to \$5,000.

Hours are 1-11 p.m. daily and 1-9 p.m. Sunday. There is adjacent, free parking and food on the premises. For additional information call 865-6900.



Whether you're stopping over between flights or starting off on a holiday, spend a relaxing night in our luxurious surroundings.

We'll mini-bus you to and from Toronto International Airport for a nominal fare.

And even if you're not flying off somewhere, but would love that getting-out-of-town feeling, The Bristol Place is the ideal spot for you.

Our \$42.00 'Stop Over' (Friday, Saturday or Sunday) includes 1 Night's Deluxe Accommodation, Double or Single Occupancy, Free Admission to our nightclub, Dr. Livingstone's, use of our Pool and Sauna and Free Parking. Children under 18 may share their parents' room at no extra cost.

Canadian funds

950 Dixon Rd. at Toronto Int'l Airport • 675-9444  
For reservations dial toll free CANADA 1-800-268-4937  
U.S. 1-800-828-7491 M.T. STATE ONLY 1-800-462-7330  
or see your travel agent

**The Bristol Place Hotel**  
Affiliated with  
Sutton Place Hotel



**You're Invited.**

Pasta cooking demonstration,  
Saturday, Sept. 15, at 1:30 p.m.

Culinary wizardry from the Pasta Machine, the new Grancafe Espresso Machine and the Cuisinart Food Processor. All designed to make good cooks better. See you Saturday.

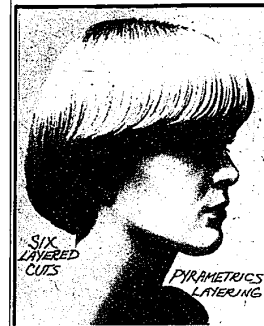
**orthogonality**

135 S. Woodward Ave. Birmingham, 642-1460 and  
330 E. Liberty at Division, Ann Arbor, 662-2600



Fine Furniture Since 1917

## PYRAMETRICS



**makes the most of your hair**

**It looks fuller. falls naturally.**

Pyrametrics, the new approach to haircutting for men and women, is gaining popularity rapidly and it's available only at VCG Salon.

The Pyrametrics system isn't a new hairstyle, but it makes any style more attractive and manageable. Each section of your hair is cut to form a base and to support the hair above it. Like laying bricks — if the first course is right the ones above it will follow. The result is hair that looks thick, healthy and natural, hair that requires minimum care.

Wear your hair long or short, curly or straight. With Pyrametrics it's the best look for you. Make an appointment now!

1979 James S. L.

**VCG SALON**

3544 W. MAPLE in BIRMINGHAM 642-2665

nails, nail wrapping, & cosmetic tips  
by Annette



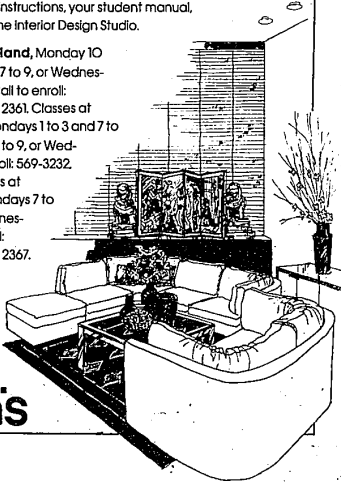
## Interior Design Studio

### LEARN SUCCESSFUL HOME DECORATING AT HUDSON'S

- how to discover your own color personality
- how to take home practical knowledge
- how to avoid costly decorating mistakes
- how to re-do and make-do with pieces you own
- how to arrange and mix furniture styles

Enroll now for an exciting program of lectures conducted by Hudson's Interior Design Studio experts. You'll attend four 2-hour weekly classes, starting the week of September 24. The fee of \$32 includes professional instructions, your student manual, handouts, and a tour of The Interior Design Studio.

Classes at Hudson's Oakland, Monday 10 to 12 and 7 to 9, Tuesdays 7 to 9, or Wednesdays 10 to 12 and 7 to 9. Call to enroll: 583-3232 ext. 2360 or ext. 2361. Classes at Hudson's Northland, Mondays 1 to 3 and 7 to 9, Tuesdays 10 to 12 and 7 to 9, or Wednesdays 7 to 9. Call to enroll: 569-3232 ext. 487 or ext. 563. Classes at Hudson's Westland, Mondays 7 to 9, Tuesdays 7 to 9, or Wednesdays 10 to 12. Call to enroll: 425-4242, ext. 2366 or ext. 2367.

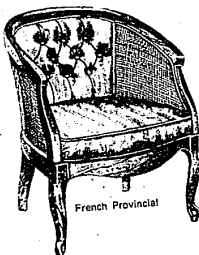


**hudson's**

*Stewart Glenn*  
**OCCASIONAL CHAIR**



Bamboo Inspired

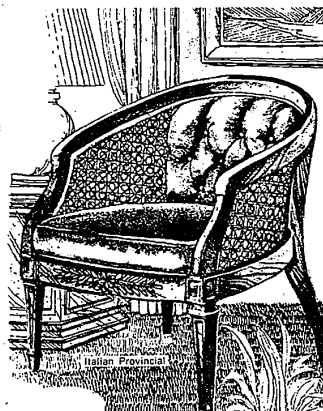


French Provincial

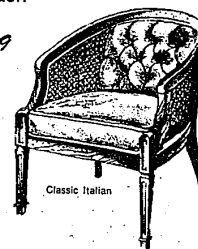
**SALE**

**BUY THEM IN PAIRS and SAVE EVEN MORE**

From **\$109** each  
or buy two  
for as low as **\$199**  
Three Days Only



Italian Provincial



Classic Italian

Choose from these superbly designed and sturdily constructed chairs and save. These Special Prices good for THREE DAYS ONLY. The perfect personal touch for your decor. Each chair distinctly crafted of hardwood solids and veneers, boldly detailed and richly finished in warm wood tones or decorator colors.

Elegantly tufted backs and box seat cushions provide luxurious comfort. Choose from a selected group of fine fabrics. Many for immediate delivery, some by special order.

STEWART GLENN CO.  
"YOUR FULL SERVICE STORE"  
has no extra charge for:  
• Careful Inspection & Set-Up  
• Courteous Delivery Service  
• Generous Showroom Parking

Ask our Interior Designers to help you with your decorating problems. Use our 4-Step Plan (no interest) or use your own plan. No Minimum Charge.

Visit Our Pennsylvania House Gallery