



graphology

Lorene Green

Rightward slant reaches out

Dear Mrs. Green,

I have been reading your column for sometime now and I am always looking for a handwriting that might be similar to mine. So far I haven't seen anything like it and wonder what you might come up with in analyzing my style of writing.

I am 41 years old and left handed. Thank you.

H. P., Rochester

Dear H. P.,

The rightward slant of your handwriting tells me that you reach out to others with friendship and caring. You are, however, somewhat clamish and are happiest with a small circle of friends (shape of your lower loop).

Quite traditional, you tend to stick with the tried and the true (lead in strokes on most of your words). The shape of many of those lead in strokes suggest some past hurts. At times you appear to have your guard up to avoid being taken advantage of.

In the hustle and bustle of daily living there is no one in your life who is

Dear Mrs. Green,
I have been reading your
column now and I am also
a hand writing that might be
so far I haven't seen anything
like it and wonder what you
might come up with

taking the time to tell you what a nice person you really are, and your need to hear this is extremely strong at this time. Especially would you enjoy a little positive reinforcement from the opposite sex. You are not unique in your need for this as each and every one of us has a need to hear it. What a better place the world would be if we could each develop the habit of giving sincere compliments to others.

The total picture (gestalt) of your handwriting suggests some frustration that you are experiencing at this time. Possibly you have exhausted all areas

in an attempt to deal with it as it appears you have assumed an attitude of resignation regarding it.

GRAPHOLOGY TIP: Dignity, which is conforming to a set of standards which the writer has adapted for himself, is shown by retraced t and d stems.

If you have a question about your handwriting, please write to Mrs. Lorene C. Green, a certified graphologist in care of this newspaper. Use a full sheet of unlined paper and write in the first person singular. Age and handedness are also helpful.

You can save money on water bill

It isn't enough that our natural gas and electricity rates are skyrocketing. Now we who use the services of the Detroit Water and Sewerage Department are faced with a whopping rate in sewage rates of between 30 and 60 percent starting Jan. 1. I want to know what I can do to try and save as much as I can on my water bill.

J.M., Detroit

There are many things you can do to reduce the "units" of water you use. More water is used in the bathroom than in either of the two other water-

consumer mailbag

use areas, the kitchen and the laundry room. T

The biggest use in the bathroom is the toilet which normally requires between five and seven gallons per flush. Make sure you don't have any hidden leaks in the toilet mechanism.

Don't use the toilet for a wastebasket for a thing like small pieces of paper or

lint, cigarette butts, etc. Do try to displace some water in the toilet tank by placing a few weighted plastic bottles with plastic screw lids in the tank on the side opposite the float ball.

The second biggest water user is the tub or shower. Try to limit the amount of water you use in the tub or the num-

ber of minutes you stand under the shower. This will also conserve whatever energy you use to heat your water, so you'll get a double saving.

These and more than 300 more hints pertaining to ways of saving money on all four utilities: water, natural gas, electricity and telephone can be found in a 95-page paperback, "Utility Bills Can Cost Less," by Betty J. Shaw. To obtain a copy send \$3.50 (this includes postage) to Utility Book, Box 39161, Redford 48239. Pass on the savings by buying several as Christmas gifts.

Women in transition invited to seminar

The Michigan Consumer Education Center, based at Eastern Michigan University, will host a national conference focusing on "Financial Management for Women in Transition" Oct. 10-12 in Eastern's Hoyt Conference Center.

The conference, financed with a grant from the Charles Stewart Mott Foundation, will provide training sessions on women-oriented consumer education topics. It also will introduce participants to the resource materials available at the Michigan Consumer Education Center and will provide an opportunity for professionals and

groups involved in programs for women to meet.

Co-sponsored by the Displaced Homemakers Network, the conference will address the financial concerns of women who are single, separated, widowed or divorced. Some of the topics to be discussed include "Credit and Women in Transition," "Housing," "Money Management," "Consumer Assertiveness," "Health," "Legal Issues and Women in Transition" and "Women and Aging."

Two keynote speakers will highlight the program activities. Esther K. Shapiro, director of the Detroit Consumer Affairs Department, and Laurie Shields, executive director to the Older Women's League Educational Fund, will be featured.

Ms. Shapiro, who will lecture at 7:30 p.m. Thursday, June 11, is a past-president of the Consumer Federation of America and a founder of the Consumer Alliance of Michigan. She was appointed director of the Detroit Consumer Affairs Department in 1974. As director, she administers a broad program of consumer education, information, research and the enforce-

ment of city consumer ordinances.

Ms. Shields, who co-founded the Older Women's League Educational Fund (OWLEF) in 1978, served as a national coordinator of the Alliance for Displaced Homemakers, which was instrumental in a drive for passage of "Displace Homemakers Acts" at the state and national level. Her talk is scheduled at 7:30 p.m. Wednesday Oct. 10.

To register for the conference, call the Michigan Consumer Education Center at EMU at 487-2292.

Thursday, October 4, 1979

(S.F-7C, Ro-5C)(O)SE

Family weekend is for single parents

A family weekend for single parents and their youngsters will be held Friday, Oct. 19, through Sunday, Oct. 21, at Camp Tamarack at Ortonville.

The weekend has been planned by SPACE, a service of the Greater Detroit Section, National Council of Jewish Women.

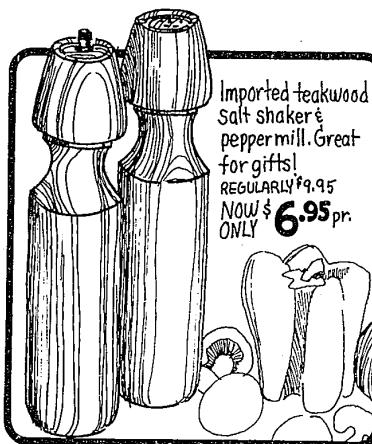
The focus of the weekend will be on enhancing the individual and strengthening the family. Activities will include

adult workshops, family recreation, a social evening, and Jewish sabbath observances.

Nadine Bell, executive director of SPACE, said she hopes adults without children and those whose children are grown also will attend the weekend and "become part of the SPACE family."

A \$50 fee per adult, or \$60 per family, includes all meals, snacks and lodging.

A SPICY OFFER...



Imported teakwood
Salt shaker &
pepper mill. Great
for gifts!
REGULARLY \$9.95
NOW \$6.95
ONLY

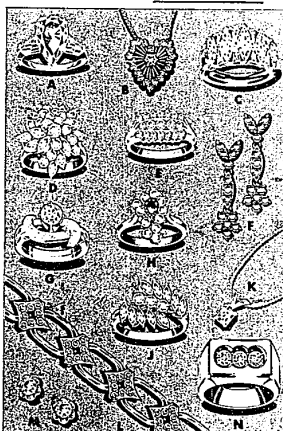
ADLER/SCHNEE

at Somerset Mall

649-5710 • MON, THURS, FRI til 9 p.m. • TUES, WED, SAT til 6 p.m.

Listen to your Father or Grandfather.

They shopped at Krandall's where the jewelry selections were greater and the values better. Still true today.



- A. Exquisite Lady's Pear-Shaped Diamond Ring, 4.11 ct. with 2 matched tapered baguette diamonds in precious platinum. NOW \$19,600
- B. Unusual Sunburst Design in heart-shaped pendant of 23 diamonds in 14K white gold NOW \$545
- C. Elegant Platinum and Diamond Wedding Ring, 5 large marquise and 8 tapered baguette diamonds NOW \$4,970
- D. A Shower of Diamonds on Many Levels - 14 marquise and 15 finely matched round diamonds in 14K w.g. NOW \$6,750
- E. Traditional Lady's Ring with 19 round diamonds in 3 rows in 14K white gold NOW \$885
- F. Classic Diamond Earrings of 28 matched full-cut diamonds in 14K white gold. The top and center diamonds are set in marquise-like settings with a flower cluster at the bottom. NOW \$1,090
- G. Contemporary Diamond Engagement and Wedding Ring Set, fine large round diamond set in offset Florentine leaf and bright 14K white gold NOW \$2,265
- H. Oriental Ruby and Diamond Ring with center pear-shaped precious ruby highlighted with 11 full-cut round diamonds set in multi-levels in 14K white gold NOW \$1,075
- I. Sparkling Diamond Ring featuring 10 marquise and 3 large full-cut round diamonds in 18K yellow gold NOW \$1,660
- K. Elegant Emerald Cut Diamond Pendant, set in 14K white gold. NOW \$725
- L. Exquisite 18K Yellow Gold Link Bracelet featuring alternate triangular link accented with round diamonds, 80 full-cut round diamonds total NOW \$4,300
- M. Tiffany Style 14K White Gold Diamond Earrings, 2 large full-cut round diamonds, .76 ct. NOW \$670
- N. Unusual and Modern 3 large diamonds set in Florentine leaf 14K yellow gold. NOW \$1,465

JEWELERS - GEMOLOGISTS FOR FOUR GENERATIONS

Sidney Krandall and Sons
755 West Big Beaver Rd.

(MAIN FLOOR, Top of Troy Tower) (16 Mile at I-75)
Troy, Michigan Phone: 313-362-4500

Open Mon. thru Sat. 9:30-6; Fri. 9:30-9
MAJOR CREDIT CARDS WELCOME

EL-MARS BRAND NEW AND ALMOST NEW FUR SALON

WE NOW DISCOUNT ALL BRAND NEW FURS • RACCOONS • FOX FLINGS • COYOTE

WE SPECIALIZE IN FOX & MINKS

WE CAN SELL YOUR UNNEEDED FURS

13851 W. 11 Mile Rd. West of Coolidge, Oak Park

398-3733

Bali YOU CAN SAVE \$1.50 ON THESE FIVE BRAS

#1211 T-SHIRT BRA.....Reg. \$9, SALE \$7.50
Soft underwire in beige, 32 to 38 B, C

#1221 T-SHIRT BRA.....Reg. \$11, SALE \$9.50
Lined underwire; white, beige, 34-36 A, 32-38 B, C

#1847 FRONT CLOSURE (shown).....Reg. \$8.50, SALE \$7
Soft contour; white or beige, 32-36 A, B

#3240 SELF-EXPRESSION...Reg. \$10, SALE \$8.50
Seamless underwire contour; white, beige, 32-36 A, B, C

#3251 SELF-EXPRESSION...Reg. \$10, SALE \$8.50
Fully padded front closure; white, beige, 32-36 A, B

October 4 through October 14

THE R SHOP'S

ROYAL OAK/BIRMINGHAM/FERNDALE/SOUTHFIELD, TEL-TWELVE
ROCHESTER, MEADOWSBROOK VILLAGE MALL & NORTH HILL PLAZA

RICH FURS **Dittrich**

YOU CAN AFFORD A FUR SALE

We've slashed prices! Over 700 furs priced from \$195 to \$1,695 (thru Saturday)

STOP... LOOK & LISTEN!

Fur is style—Design and workmanship come together in new ways. Big "Name" designers put their fashion looks into fur.

Fur is color—It's a different story this year. Everything is coming up color.

Fur is fashion—It's the key to this year's fur. Women love the way it's both casual and dressy...to wear day or evening

MAKE THIS YEAR THE WHOLE WORLD WILL BE LOOKING AT YOU.

RICH FURS **Dittrich**

Dependability since 1893

Detroit, 7373 Third Ave., 673-8300 Bloomfield Hills, 1515 N Woodward Ave., 642-3000

Open Monday-Sat. 9:30-5 p.m. Bloomfield Thursday 11:30-2 p.m.
Customer Parking Lot Adjoining