

Rope Rover or clean up the consequences

How to RAISE A DOG when nobody's home!

By JERRY CLIMER



With the short rope tied to the pup's collar, you can allow the dog into the living area while still keeping control over its movements. Tie the rope to the leg of your chair, table, or even your ankle, and relax, watch television, or read.

At the same time, you can keep an eye on the pup to be sure that he doesn't misbehave. You can also talk, pet and play with the pup for awhile before he settles down for another of his frequent naps.

You will be amazed to find how much you will enjoy raising your puppy with the aid of a training rope. From now on you can allow your dog to accompany you around the house and not worry that he will run into a corner to soil the rug, or chew on a forbidden treasure. In return, the puppy will be delighted that he can be with you and will learn good behavior through your firm, loving discipline.

CHEWING done by dogs can be destructive, dangerous and expensive. Many times, it is the most frustrating problem a dog owner encounters. In addition, many favored pets lose their life by swallowing poisonous material.

Let's look at the problem of destructive chewing and find out what training an owner must do to avoid raising a canine housewrecker.

Obviously, it is desirable to find out if the dog you just bought or are thinking of buying is known as a destructive house dog. Great Danes, huskies, scotties, dalmatians, old English sheepdogs and poodles are not happy when left alone. These dogs will be more inclined to get into mischief if not properly trained.

A dog must have something to chew

on because this is the way it cleans its teeth. If given acceptable toys and at least occasionally a bone or rough dog biscuit, you may prevent a great deal of mischief.

MY YOUNG friend Carl is the proud owner of a new puppy. He knew that if his pup, Sitka, was going to get into trouble it probably would occur when the pup was left alone.

One night Carl and his mother, Sandra, left the house, forgetting to lock Sitka in the kitchen. When they returned a short time later they were ap-

peppers, vinegar and salt. Since it is used in food for humans, nothing in it will harm a dog. One two-ounce bottle of sauce probably will last through at least two dogs and 50 casseroles of chili.

peppers, vinegar and salt. Since it is used in food for humans, nothing in it will harm a dog. One two-ounce bottle of sauce probably will last through at least two dogs and 50 casseroles of chili.

peppers, vinegar and salt. Since it is used in food for humans, nothing in it will harm a dog. One two-ounce bottle of sauce probably will last through at least two dogs and 50 casseroles of chili.

Next: Housebreaking the dog.

Copyright 1977, Penny dreadful Publishers, Box 364, Jackson, Mich. 49204. This book and its sequel may be ordered from the publisher for \$3.50 each or two for \$6.

FIREPLACE ENERGY SAVING GLASS ENCLOSURES
(Custom Installation Available)

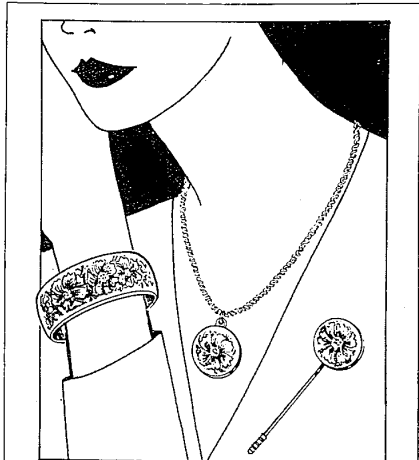
From Outstanding Manufacturers:

- THERMORITE
- HEARTH CRAFT
- REVICMAN
- Performed Wiegman Company

- Tool Sets
- Bellows
- Grates
- Screens
- Accessories
- Gas Logs

COMPLETELY CASUAL FURNITURE

BIRMINGHAM 281 Hamilton 844-1979 Daily 9:30-5:30 Thurs. & Fri. '11-9	ROCHESTER 823 N. Main 652-1067 Daily 9:30-5:30 Thurs. & Fri. '10-9	LIVONIA 29500 W. Six Mile 522-9900 Daily 9:30-5:30 Mon., Thurs. & Fri. '11-9
---	---	---



Pretty thought:
Flower of the Month
 pewter jewelry

To commemorate a birthday, or any momentous occasion, jewelry appropriately flowered by Kirk International. Here, October (a different flower each month). Bracelet, 9.50. Pendant, 7.50. Stick pin, 7.50. Hudson's Silver Gallery, all stores.

HUDSON'S

PRESEASON SALE

50% off up to selected coats and jackets

ANTARTEX sheepskins deserve regular attention from our Dry-Cleaning service. Also hats, mitts, wool sweaters and blankets. Layaways accepted.

Hours: Mon.-Sat. 10-5:30
Thurs. & Fri. 10-9

New Additions to our Import Collection

Chairs, rockers, stools and desks from Canada — handsomely designed, well-built and very reasonably priced. Hurry in!

orthogonality

135 S. Woodward, Birmingham, 642-1460
330 E. Liberty, Ann Arbor, 662-2600

Krandall's invites you...
to bring your diamonds and jewelry in today and convert them into **Immediate Cash!**

All discussions will be conducted in private offices with consideration for your confidence and respect for your privacy. Exclusions for purchase without obligation.

Sidney Krandall & Sons
755 W. Big Beaver Rd., Troy, Michigan
(16 Mile at I-75) • Phone: 313-362-4500

Do It Now!

You'll get the Towne and Country Treatment and save 20% on this table from the Drexel "Et Cetera" collection.

Towne and Country Interiors invites you to save 20% on the "Et Cetera" collection from Drexel. The loveseat cocktail table shown here is one of nineteen magnificent pieces which are all 20% off. And, the Towne and Country Treatment is yours free.

The Drexel "Et Cetera" collection — all 20% off — select from this cocktail table (regularly \$469, now \$375), black Chinoiserie bookcase, chairs, desks, consoles, commodes, and other exciting pieces.

Sale ends November 3, 1979.

The Towne and Country Treatment will include the select piece at Towne and Country Interiors — with 10% off AND Interiors designers to help you. Our pay-me-later policy and 3-year construction warranty ensure your satisfaction.

Towne and Country Interiors

Dearborn 565-3400 Bloomfield Hills 642-8822 Rochester 652-3500
23600 Michigan Ave. east of Telegraph 4107 Telegraph at Long Lake Rd. 1110 S. Rochester Rd. in Winchester Mall

Open daily 10-9 Wed. & Sat 10-6 Use our convenient charge, Visa or Master Charge

FRIDAY EVENING, OCTOBER 19 at 7 p.m.
SATURDAY MORNING, OCTOBER 20 at 11 a.m.
SUNDAY AFTERNOON, OCTOBER 21 at 12 noon

PREVIEWING until sale times

GALLERY AUCTION

featuring an ART COLLECTION Belonging to Mr. and Mrs. Aaron Gershenson
of Palmer Woods, Detroit

also a collection of ORIENTAL RUGS and American Antique Furniture and items formerly belonging to J. OGDEN ARMOUR ESTATE of Traverse City, Michigan

Georgian (LONDON) Solid Silver Tea Set, 1756-1799 and weighing 358 Troy Ounces.

Antique Chinese Scroll Painting on SILK, 1795-1845. Size 8'10" x 4'8"

• FREE VALET PARKING for the Friday and Sunday Auctions... • Illustrated Catalog \$3 at Galleries

Across from Renaissance Center, in Detroit

DuMOUCHELLE'S
409 E. Jefferson, Detroit • Phones (313) 963-1379 & 963-5046
Lawrence F. DuMouchelle Joan Walker Ernest J. DuMouchelle
Art & Estate Auctioneers and Appraisers