

Bonus: Theater give-aways grace her table

By LOUISE OKRUTSKY

Mid-afternoon shafts of sun glided across the 22 karat gold rim of the cups and saucers on Mrs. Eva Schweizer's table.

The gold rims and floral pattern of the dishes sparked much as they must have when Mrs. Schweizer first brought each piece home after seeing a movie at the Redford Theater in the early '40s.

Ever since she first assembled the 12-place setting of yellow and rust floral china the set has seen steady service on the dinner table of her Farmington home.

And the set also whetted her appetite for collecting the plates and silverware theaters such as the Redford or Farmington's Civic used to attract patrons during tight money times.

Although she managed to collect four different sets of china and a set of silverware, Mrs. Schweizer has a special feeling for the yellow floral patterned china she still uses.

"Well, this one was like a prize," she says with a loving smile.

The 56-piece set of china was collected piece by piece over time. Mrs.

Schweizer went to see a film at the Redford.

"It was the first set the Redford Theater ever gave out," she said.

TO COMPLEMENT the china, she also began collecting silverware from the Civic Theater.

But it's her determination to collect a full set which makes those cups and dishes special.

Once a week, Mrs. Schweizer would bundle up her 1 1/2-year-old son and spend 25 cents on a bus ride from her home on Grand River near Middlebelt to the Redford and back again. The quarter also went toward paying for a ladies' ticket into the theater.

It was the purchase of the ladies' ticket which made her eligible for the plate or cup the theater was giving out that night.

For 1 1/2 years she went almost religiously to the theater for her plates. At times she would be accompanied by friends who would give her their plates so she still has a few replacements for her set.

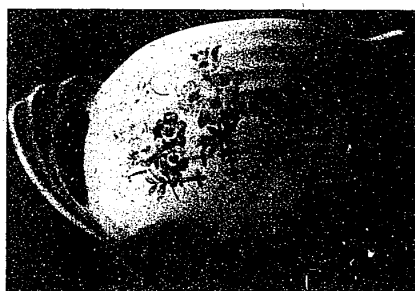
"When you're a wife and mother of five children, you need a relaxation,"

Mrs. Schweizer explained.

"That one night out was like a ritual and I hated to break it," she said.

In 1941, when Mrs. Schweizer's first daughter married, she was appropriately given the first collected set of theater china.

THAT LEFT Mrs. Schweizer with



four children unmarried and three sets of theater china.

To complement her table, she began collecting Onelida silverware from the Civic.

Along with adding to her china cabinet, Mrs. Schweizer had a chance to see the films of the day.

"I don't remember the movies, but I

remember the stars — Norma Shearer, Clark Gable, Merle Oberon, Humphrey Bogart and Lauren Bacall."

There's another memory Mrs. Schweizer cultivated within the dark and friendly depths of the theater.

"When the movie was on, you'd hear

plates breaking sometimes. Then I'd wish I had that plate.

"When I left the theater, I was carrying my purse, my bus ticket, my son and my plate. I never dropped one

"When the movie was on, you'd hear



Beaming over part of her prized set of china from the Redford Theater, Eva Schweizer strikes a contented pose in her yellow and white kitchen. The flowered pattern (top left) is still clear and unfaded and is complemented by silverware (bottom) given out by the Civic Theater.

Staff photos
by Randy Borst

THE INSIDE * ANGLE

By LOUISE OKRUTSKY

IN THE 'AIN'T THAT CUTE' department, the folks at the Gathering Place are sending out Christmas cards featuring a red, sweat-soaked Santa and the greeting "Joggle's Bells, Joggle Bells." (Any truth to the rumor Santa will jog around the world this month?)

CHECK THE SIZE OF those cards. That's the warning from Farmington Postmaster Kenneth Harris. Regulations insist that envelopes must be at least 3 1/2 inches high and five inches long to be accepted for mailing. There is a seven-cent surcharge on first class mail weighing one ounce or less and on single piece, third class mail of two ounces or less that measure more than 6 1/4 inches high, 11 1/2 inches long or 1/4 inch thick. Make sure your holiday cards measure up.

A SURE SIGN OF the holidays in Farmington is the annual decoration of the Flamingo Trailer Park on Middlebelt near Nine Mile. Angles always got a kick out of the fact that the Santas were smaller than the flamingoes. Still, LA wants to add its own salute to the folks down at the Flamingo: ★ ★ ★ ★ ★

HILLEL DAY School will sponsor an art auction at 7:30 p.m., Dec. 8 at the Gallery Art Center, 18831 W. 12 Mile between Southfield Road and Evergreen in Lathrup Village. Tickets are \$1.50 and are available at the door or in the school office, 32200 Middlebelt, Farmington Hills. Preview is at 7:30 p.m.; auction is at 8:30 p.m.

GET IMMUNIZED Oakland County Health Division will offer a free immunization clinic in Farmington from 9 a.m. to noon, Dec. 13 in First Methodist Church, Warner and Grand River. Immunizations for measles, German measles, mumps, polio, diphtheria and whooping cough are available. A parent or legal guardian must accompany a child under 18-years-old and bring previous records of immunizations. If you bring children other than your own, a release form must be obtained from either the Oakland County Health Division or personnel at the clinic.

HELP THE FARMINGTON Community Center by joining in an A&P donation day on Dec. 11. Five percent of all purchases, excluding tobacco and liquor, made that day will be donated to the Farmington Community Center by A&P. Pick up your Donation Days Identification Card at the Farmington Community Center, 24705 Farmington Road. Your purchase won't be credited to the Center without the special card. Call 477-8404 for further information.

FOR THOSE OF YOU who wondered why Good Fellow dolls weren't displayed in the Farmington Post Office for the first time in 11 years, chalk up the reason to Uncle Sam's postal regulations. While non-profit fund raisers once could use postal lobbies for displays, regulations governing this have been changed. The 25 dolls dressed this year by postal workers will be part of the display at the Farmington Community Libraries this month.

DOING ANYTHING SPECIAL this evening? There's still time to take in the Bel Canto Ensemble holiday performance at 7:30 p.m., Dec. 3 in the multi-purpose room of H building on Oakland Community College's Orchard Ridge campus.

EVEN TEACHERS GO to school. Dr. Norman Stewart of Michigan State University will provide admissions information to teachers interested in earning an MSU master degree in counseling and guidance. This degree may be earned in the Detroit area without East Lansing residency requirement. The session for the information will be from 3-5 p.m., Dec. 5 at the Birmingham Center for Continuing Education, 746 Purdy, Birmingham. Teachers already on their degree program should make an advance appointment between 2-5:45 p.m. by calling 645-5410.

OAKLAND COUNTY residents have an opportunity to express their views on alternative transportation proposals during two public hearings at 7:30 p.m., Dec. 3-4. The Dec. 3 hearing will be in rooms 1 and 2 of the Ferndale Community Center, 400 E. Nine Mile. The Dec. 4 hearing is in the auditorium of the Oakland County Board of Commissioners Building, 1200 W. Telegraph, Pontiac. The hearings are required before the board of SEMTA can make a final decision on comprehensive transportation system for southeast Michigan. The final decision is tentatively scheduled for Dec. 18. There are seven improvement plans and an eighth do-nothing plan under consideration.

An environmental impact statement referring to the proposals is available for public review in Oakland County at the Pontiac Public Library, 60 E. Pike and at the Birmingham Public Library, 351 Martin. A popular summary of the statement can be obtained at the libraries at by calling SEMTA at 255-8765.

TOTS can see Santa at the Detroit Science Center, 5020 John R. from 11 a.m. to 2 p.m., Dec. 20. (Cosmic Claus?)

HUDSON'S favorite things

mysterious noel lights

And Un-De-water™ candles by Corning are real illusion-makers. Just fill the durable Pyrex® globe with water (add a few drops of food coloring to enhance it), put a lighted candle in the tumbler and insert it. Presto! Moods of magic light, burning underwater to entice every observer. Great holiday decor, and grand Christmas gifts too. Each set includes two smokeless wax candles, and you can choose from three shapes: **A.** Nautilus, a graceful hourglass; **B.** Neptune, a bulbous beauty; **C.** Sea Swirl, with fluted accents. Each 7.99 in The Marketplace, all Hudson's stores.

