

**obituaries**

**EVA E. ANDERSON**  
 died Feb. 16 in Botsford General Hospital.  
 She was born Dec. 10, 1926 in Ontario, Canada to Frederick and Florence Creighton. Mr. Creighton received the Silver Star Medal in November, 1944. He was a member of the Rangers during World War II.  
 She was a member of the First Presbyterian Church of Farmington Hills. Mr. Creighton lived in Farmington Hills for 23 years. He was a tool maker for L&B Tool Co., Farmington.  
 Survivors include: wife, Gladys; sons, Kenneth, Frederick, John, Douglas; mother, Florence Creighton; two brothers, one sister and two grandchildren.  
 Services were Feb. 20 in McCabe Funeral Home, Farmington Hills with Rev. George W. Ramsey officiating. Burial was in Glen Eden Cemetery.

**JOHN M. CREIGHTON**  
 Mr. Creighton, 59, of Farmington Hills

**Bloodmobile comes to Farmington area**

The American Red Cross must collect between 550 to 1,000 pints of blood each day in the metro Detroit area to meet the needs of patients in 75 area hospitals.

People between the ages of 17 (with parental consent) and 66 and in general good health are eligible to donate.  
 The bloodmobile will be in this area:

- March 13, Our Lady of Mercy High School, 29300 11 Mile, from 9 a.m. to 3 p.m. during blood drive hours.
- March 15, Finnish Cultural Center, 35200 Eight Mile, from 9 a.m. to 3 p.m. For an appointment, call 478-6939 during blood drive hours.
- March 15, St. Fabian Church, 32265 Red Clover, from 9 a.m. to 3 p.m. For an appointment, call 553-4610 during blood drive hours.
- March 1, Christian Missionary Alliance Church, 28111 10 Mile, from 10 a.m. to 4 p.m. For an appointment, call 476-7673 during blood drive hours.

**Institute seeking science students**

Future Einsteins or just current day science buffs will find much of interest during the Summer Science Institute at Lawrence Institute of Technology.

Admission is open to current (1979-80) high school juniors who have received no high school grades lower than a B in science or mathematics. Deadline for application is March 28. Admitted applicants will be notified on May 1. Information may be obtained by calling Zaven Margosian at 356-0200, ext. 61.

The program will begin on June 15. This will be the 12th year for the six-week program which opens up the world of advanced science study to exceptional high school students.

The program is limited to 60 outstanding science students who have demonstrated superior achievement and who have been recommended by their science or mathematics teacher and counselor or principal, according to Margosian.

The courses in the program will cover chemical kinetics, X-ray diffraction analysis, radiochemical nuclear physics, graphical analysis and an overview of calculus.

Also included in the daily activities will be studies of chemical physics and experience using the college's digital computer.

"In addition, we arrange for field trips to research laboratories and invite top corporate executives, researchers and engineers in to speak to the students," according to Margosian.

"By exposing students to the real world of science, we hope they will come to understand the career possibilities and gain a better understanding of the subjects themselves."

Courses are taught by full-time members of the LIT faculty and are held in the laboratories and facilities in the college's science building.

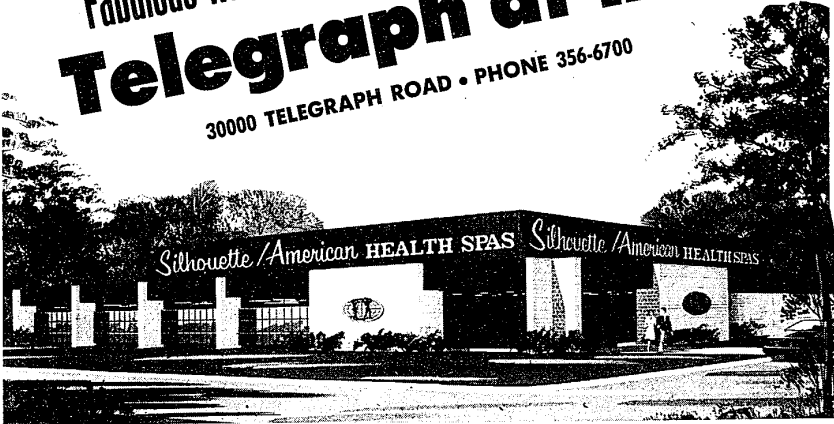
The program will run from 9 a.m. to 4 p.m., through July 25.

There is no charge for the instruction, but a \$30 non-refundable registration fee is required for those who have been accepted to the program.

**GRAND OPENING**

**Fabulous New \$1,000,000 Ultra-Modern Health Spa  
 Telegraph at 12 1/2**

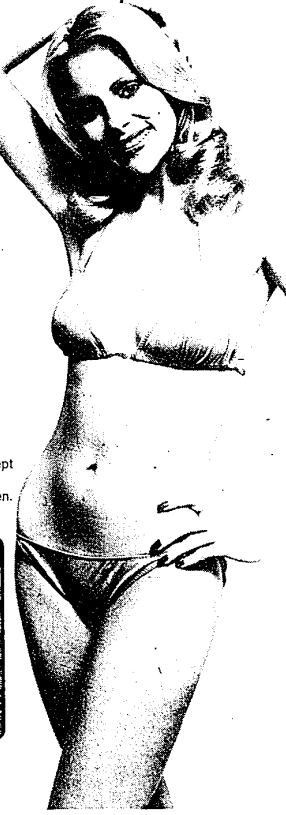
**30000 TELEGRAPH ROAD • PHONE 356-6700**



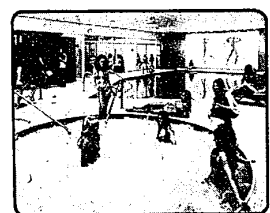
You are invited to preview the most magnificent health spa facilities ever assembled. Discover a world of luxury where you can streamline your figure or physique quickly and easily utilizing the most sophisticated modern fitness equipment. Drop in now while special grand opening savings are in effect at all Spas.

**GRAND OPENING SPECIAL!**  
**2 years for the price of 1**

In celebration of the Grand Opening of our new Telegraph at 12 1/2 Mile Spa, we are making this special offer on all 1-year preferred renewal memberships. Enroll now and you'll receive a 2-year membership for the price of the first year alone. Limited time only.



Get in shape to enjoy the good life using over \$1,000,000 in facilities at each Spa featuring Paramount's Uni-Flex™, the most scientifically advanced conditioning concept available. Your results are accomplished by our exclusive Spa program and nutritional guidance. Don't let another day go by...shape up programs start daily for ladies and men.



Accelerate weight loss while you relax in our exclusive whirlpool mineral spa & crystal-clear swimming pool.



Lose excess pounds and inches quickly and easily using over one million dollars in facilities and equipment.

Private Facilities for Ladies & Men • Open Daily 10-10 • Adult Visitors, 18 and over, Welcome!



**Silhouette/American HEALTH SPAS**

**MR. Q TRAVEL, INC.**  
 Welcomes You To

**Penkill Castle**  
 Ayrshire, Scotland



Spend a very special week from May through September in an Authentic 15th Century Castle... Live with a collection of Pro-Banquet Art by Dante Rossetti and William Bell Scott... Experience Gourmet Cuisine with the Laird of Penkill! Program includes Car Rental and admission and Green Fees to the famous Turnberry Golf Club, Scottish Entertainment for two evenings and a guided tour of the Robert Burns Heritage Trail.

**CALL FOR DETAILS — 886-0500**  
**19517 MACK AVE. GROSSE POINTE**

**BUY CUSTOM FURNITURE WHERE IT'S MADE AT THE SOFA FACTORY!**



Imagine you can now buy top quality sofas, love seats or sleepers in your choice of style or fabric direct from the manufacturer. Choose from 10,000 different fabrics starting at \$369.95

- Custom Made Any Size
- Special Orders Our Specialty
- 5 Yr. Guarantee
- 10,000 Different Fabrics
- Spring Cushions Available
- Free Delivery
- Special Designs From Your Pictures Possible
- Hardwood Frames

**The Sofa Factory**  
 31153 PLYMOUTH ROAD, LIVONIA  
 1 block east of Merriman  
**525-9051**