

THE CORAL REEF
Tropical and Marine Fish
Aquariums and Supplies
22834 Mooney - Farmington Plaza

START A NEW HOBBY TODAY

Complete Meta Frame Aquarium Outfit

Mon. - Fri. 10 a.m. to 8 p.m.
Sat. 10 a.m. - 9 p.m.
Sun. noon to 5 p.m.

\$14.95

Et Cetera
COLLECTION

Folding Stool — \$99.00

One thing about the holiday season...
With all the company, you always
seem to run out of seating space.
One thing you can do about it is this:
Take home the camp stool deluxe,
designed for the great indoors.

Adams House
Furniture & Boutiques of distinction

496 W. ANN ARBOR TRAIL
PLYMOUTH - PHONE 455-1440

STORE HOURS:
10 a.m. - 9 p.m.
Until Christmas

MASTER CHARGE
MICHIGAN BANKCARD
REVOLVING CHARGE

County To Assess Scope Of Oakland Drug Abuse

A three-phase program to assess the scope of drug abuse in Oakland County and to investigate methods of coping with the problem was unveiled today by Arthur W. Jalkanen, dean of students at Oakland Community College's Auburn Hills Campus and newly appointed chairman of the Oakland County Drug Abuse Committee.

The committee was established by the board of supervisors in October to focus attention on the danger of the use of drugs by teenagers and adults, and to help coordinate the planning of community forces through the use of educational programs that would ultimately provide for treatment facilities.

PHASE I, according to Jalkanen, the coordination of a comprehensive education program to focus on the problem.

received its impetus in 1987 when Gerald St. Souver was appointed by then Prosecutor S. Jerome Bronson as chief investigator in drug abuse.

St. Souver's efforts have been augmented by speakers such as Ted Karla, Royal Oak Youth Protection League; Dr. Jerry Tobias, University of Detroit professor and consultant to the Bloomfield Township Police Department; Dr. Martin Barr, dean of the College of Pharmacy, Wayne State University; and national drug authority Sidney Cohen who has appeared at both Oakland Community College and Oakland University.

The emphasis on the perils of drug abuse through the use of educational programs must be continued, Jalkanen said, but the public awareness of the problem is such that we must now enter the next phase of the program.

PHASE II is an assessment of the problem and realistic program planning. This committee will systematically assess the problem in all parts of the county and make recommendations to the Human Resources Committee for evaluation and eventual submission to the board of supervisors for adoption and implementation.

In this phase of activity Jalkanen hopes the drug abuse committee will involve the total county by holding hearings at which time all citizens will have an opportunity to express their views and recommendations.

WHILE these county-wide hearings are in process, Jalkanen expects to coordinate a comprehensive evaluation of drug-related programs including Synanon, halfway houses, and other creative projects recognized for their efforts in drug-use abuse.

"Another task of the committee," Jalkanen indicated, "will be directed to investigate funding the operation of a comprehensive drug-related program."

"This includes the investigation of the House Bill 11701 dealing with amendments to the national Public Service Act, and House Bill 912 authorizing the U.S. Commissioner of Education to make grants to elementary, secondary and other educational institutions."

"These bills can be prime sources of funds for our county program, as well as financing individual school programs. I see nothing inappropriate in requesting the major pharmaceutical firms to assist in the finance operation of this entire activity," Jalkanen said.

To deal with legislation, Jalkanen indicated that a motion passed at the Oct. 13 board of supervisors meeting refers the problem of "proposing legislation . . . for the control and treatment of drug addicts and alcoholics . . ." is also a charge of the drug abuse committee.

According to Jalkanen, the drug abuse committee will be able to make such recommendations and eventually the county will have a meaningful program, one that will be a demonstration project for the nation.

PHASE III will include in the implementation of programs and activities recommended by the drug abuse committee, and approved for support by the board of supervisors.

These programs will be "costed out," so that the county will be able to determine its financial commitment and desired plan of action. "It can be expected," Jalkanen said, "that certain kinds of programs may be recommended for one part of our county, while other more comprehensive programs will be required in other areas."

"Urban and rural areas may need different programs, and hopefully the citizens and organizations in each community will help the drug abuse committee in determining community needs."

Jalkanen further discussed the risk of guidance clinics in communities, and looked to a date when a permanent office will be created that will continually deal with drug-use problems in the future.

"There is no question in most minds that drug use is a continuing phenomenon, and our county may well choose to be continually involved."



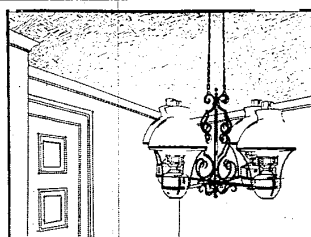
WHAT HAVE YOU GOT TO LOSE?

Look around you. Ask yourself if you've done all you can to protect your home against the threat of fire. Think about increasing property values and home improvements or additions which may have seriously outdated your present home insurance protection. Then, find out how State Farm . . . the number one company in home insurance . . . can give you all the protection you'll probably ever need for your home.

FRED SANRA
32200 Grand River
Farmington
476-1800

STATE FARM FIRE AND MARINE INSURANCE
New York, Bloomington, Illinois

P-6750



IN A CLASS ALL THEIR OWN!

Armstrong

Chandelier Ceilings

A NEW KIND OF WALL-TO-WALL ELEGANCE

Now there's a new kind of ceiling that's made for the most luxurious rooms of your house. Unlike ordinary tile ceilings, the new Armstrong Chandelier Ceilings don't have the typical "ceiling block" look. The bevels along the edges have been eliminated. Instead, tiles fit snugly together, creating a truly elegant effect. Come in and ask us to show you three great designs to give your rooms an exciting, new look.



Open Until
6 p.m.
Week Days
Saturday 'til 4 p.m.



Farmington LUMBER Co.

"54 Years of Reliability"

32800 GRAND RIVER GR 4-4015

Buy - Sell - Trade - 422-0900

RITE CARPET ON-HAND DISCOUNT SALE

ON-HAND MEANS: it's here now in our huge stock ready for quick delivery -- marked down for year-end clearance -- the savings are big, Name Brand items -- All First Quality -- Reserve your selection Now!!

\$4.98
SQ. YD.
VALUES
to \$7.98

CHOOSE

Borwick Nylon Shag
Orange-red
Borwick Nylon Shag
Blue Green
Paradise Blue
Green Loop

Red Nylon Loop
Sun-Gold 200
Nylon Tweed
Rust-Gold Nylon Toward
Spanish Green Polyester

PLUS OTHERS

\$5.98
SQ. YD.
VALUES
to \$8.98

CHOOSE

Stone Green Polyester
Windswept Pink Shag
Armstrong Gold Shag
Armstrong Avocado Shag

Green Devon Splash
Spoke Green Fartel
Safflower Devon
Orange Devon

PLUS OTHERS

\$6.98
SQ. YD.
VALUES
to \$9.98

CHOOSE

Flame Reddish Splash
Blunt Polyester Shag
Candy Reddish Splash
Hot Pink Kodel

Treasure Gold Leaf
Blue Devon Splash
Cabin Crafts Shag

PLUS OTHERS

KITCHEN CARPET

TIGHTLY TUFTED
RUBBER BACKED

\$6.98
SQ. YD.

NYLON SHAG

WUNDA WEVE
8 COLORS

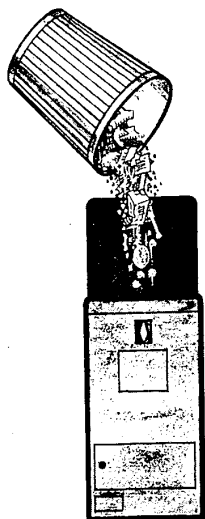
\$5.98
SQ. YD.

RITE Carpet Co.

7 MILE AND MIDDLE BELT—ACROSS FROM LIVONIA MALL
STORE HOURS: 9 to 9 Daily; 9 to 6 Tuesday and Wednesday

EASY CREDIT TERMS
Up to 36 months to pay
FOR FREE HOME SERVICE
476-8360 or 535-7860
©Ruralon Powder Co., for Olefin Fiber

Just drop it!



A smokeless, odorless
gas incinerator
gets rid of all
burnable trash indoors.

Drop it! . . . the papers, garbage, burnable trash . . . drop all of it directly into a modern gas incinerator! With a smokeless, odorless gas incinerator in your basement, garage or utility room, you can forget that daily dish out into the rain and snow—no more polluting the air with smoke and odor from burning trash. Another nice feature of the automatic gas incinerator is that it costs just pennies a day to operate.

See your Gas Incinerator Dealer



OWENS-CORNING
FIBERGLASS
INSULATION

3 1/8" X 15" Foil Faced
70" sq. ft. Roll

\$5.19 Cash & Carry

BASKETBALL BACK BOARD
complete with hoop **\$15.95**

ROCK SALT
100 LB. BAG
\$1.95 cash and carry

We Cut Window Glass To Size

H. A. SMITH LUMBER
28575 Grand River
near Middlebelt
GR 4-6610
KE 5-8440