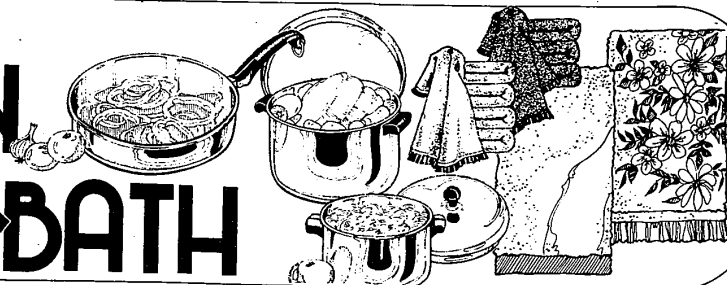


KITCHEN & BATH



Luxuriate and save money...

Two-speed pump perfect for spas and hot baths

You might think that anyone who could afford the luxury of a redwood hot tub or built-in spa wouldn't worry about the expenses involved in operating and maintaining it.

But maybe not wasting money is how they got enough to afford one in the first place. And, one place where spa and hot tub owners can make substantial equipment and energy savings is the pump and filtration system.

Benefits

Much has been written over the past several months about the benefits of using two pumps in a spa or hot tub. As these articles point out, the major advantage of a dual system is that it separates agitation from filtration, the two quite opposite functions pumps perform in any spa or hot tub.

Using a single pump to perform both jobs is a tall order since the two actions interfere with each other. Jetting or agitation requires high flow and pressure for maximum therapeutic action and pleasurable effect. This, however, is required only for the relatively short periods of time when the spa or hot tub is in use.

Filtration facts

Filtration, on the other hand, is most efficient at lower flows and pressures and is required over longer periods of time. This will ensure proper sanitation and chemical mixing.

The small filter, heater and piping network of a spa imposes large restrictions (friction losses) on the water flow. If a single pump is used, it must be sized for agitation and, consequently, will be oversized for filtration.

The result is expensive operating costs and a very inefficient system. One alternative is to use two pumps: a larger one for jetting and a smaller one for filtration.

Economical choice

There is no doubt that a spa utilizing two separate pumps saves energy. But the initial expenditure for the two pumps cancels much of the actual dollar savings.

A third alternative, offered by ITT Marlow Pumps, involves a single, two-speed spa pump which performs both functions.

Significant savings

This MarDur EnergiSaver pump, incidentally, is very similar to the highly successful MarDur EnergiSaver line for swimming pool applications. Here, the pump runs at low speed at night and during off-peak hours and at high speed during or just after the pool is used, significantly cutting energy costs.

Applying the MarDur EnergiSaver pump to a spa or hot tub couldn't be more logical. Utilizing low speed for filtration and high speed for agitation, you have virtually two pumps in one. The two-speed pump allows the user to combine the best features of both the single and dual pump alternatives.

Easy, efficient

First, there is a single pump to purchase, install, maintain and operate. Second, the ability to separate agitation and filtration functions increases

the efficiency of both, meaning even lower energy costs and improved filtration and agitation.

It should be pointed out that a 1½ HP (3450 RPM) two-speed pump operates at 1/5 HP on low speed (1750 RPM). In effect, it is both a 1/5 and 1½ pump in one.

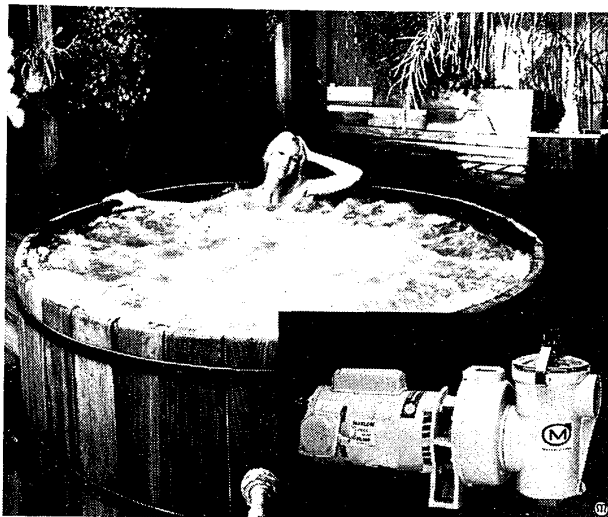
In a dual pump system, the small pump (usually less than ½ HP) runs constantly for filtration and the large pump (usually 1½ HP) runs only during agitation (usually through two separate piping systems).

The Marlow EnergiSaver two-speed pump offers two advantages over this arrangement. First, when running the pump at low speed for filtration, you still have a heavy-duty 1½ HP pump that is simply "taking it easy" and saving power in the role of a 1/5 HP pump.

The more the better!

Second, pumps are happiest and perform best when running continuously. The MarDur EnergiSaver two-speed pump is always running while, in a dual pump system, the larger pump is operated for only short periods of time when the spa or hot tub is being used and agitation is required.

In most design decisions, there are a number of factors to be considered and the choices often end up being an exercise in trade-off and compromise. But, in this case, it is obvious that the two-speed pump design offers not only initial and operational cost advantages over a dual pump system but also performance and efficiency gains when compared to either single or dual pump designs.



Relaxation is what spas and hot tubs are designed to provide. Having the right pump eliminates worries about performance, durability and energy.

Kurtis Kitchen & Bath Centers



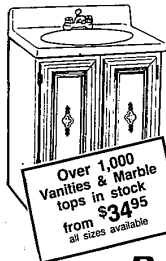
warm, mellow, handsome
Oak Cabinetry

Save
up to

60% OFF

Extra 10% off on Kitchen Cabinets & Vanities

Good thru April 30, 1979



5 Ft. Kitchen Sink Base Cabinet

W/Formica top & white single sink
Reg. \$129.95

\$116⁹⁶

WITH THIS AD
wall cabinets in stock

54" Unit 119.95 - LESS 10% wad \$107.95
66" Unit 134.95 - LESS 10% wad \$121.46
72" Unit 144.95 - LESS 10% wad \$131.36
84" Unit 154.95 - LESS 10% wad \$139.46

FREE KITCHEN PLANNING SERVICE
Bring in your measurements, our experts will do the rest

Belwood

Kurtis

KITCHEN & BATH CENTERS

NORTHWEST
20433 Livemore
1 blk. S. of 8 Mile
Detroit • 864-2300

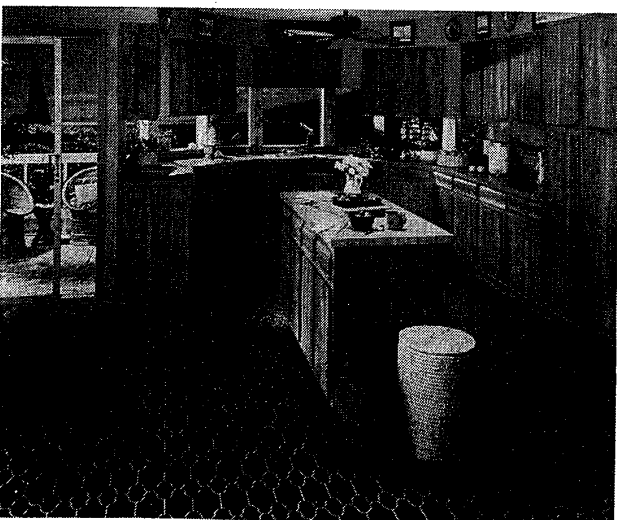
SOUTHWEST
20249 W. Warren
1 blk. W. of Evergreen
Dearborn Heights • 271-3200

NORTHEAST
-5751 E. 13 Mile
at Mound - Green Acres Plaza
Warren • 936-1500

ANN ARBOR
-3666 S. State Street
1 blk. S. of I-94
Ann Arbor • 663-5575

NORTHWEST SUBURBS
30835 W. 10 Mile
E. of Orchard Lk. Rd.
Farmington Hills • 478-8500

DOW/RIVER
1491 Southfield
Btwn. I-75 & Fort St.
Livonia Park • 388-1900



Planning is the key to wise kitchen remodeling. Since remodeling often calls for the replacement of cabinets, the National Kitchen Cabinet Association advises anyone shopping for cabinets to look for the

NKCA certification seal. It indicates that the cabinets are designed to provide years of service, despite hard use.

Include durable kitchen cabinets

The first step in kitchen remodeling is planning. Without it, there's no telling what the finished kitchen may look like or how well it will function. According to the National Kitchen Cabinet Association, efficiency should get equal billing with appearance in kitchen remodeling. A work-saving kitchen is the one that will get homeowners' applause over the years.

Because kitchen remodeling often includes replacing the cabinets, NKCA suggests that anyone shopping for cabinets look for those that require min-

imal care, but offer long-term service. How can you determine whether the cabinets you have in mind are designed to last? Look for the NKCA certification seal on the inside of a cabinet door or drawer. The small, circular, blue and white certification seal can be found on kitchen cabinets and both vanities that meet the rigid construction and performance standards of the American National Standards Institute (ANSI).

To qualify, cabinets and vanities are designed to pass a variety of tests which

measure their ability to withstand years of regular use and abuse, such as overloaded shelves and drawers or a child or grownup pulling on a wall cabinet door. Finish tests measure the cabinet's ability to withstand potentially harmful substances such as mustard, grease, food and detergent spills, high humidity and rapid temperature changes.

For additional information on the role of kitchen cabinets in remodeling, send 35 cents to the National Kitchen Cabinet Association, Box 2978, Grand Central Station, New York, N.Y. 10017.