

<p><b>302 Birmingham Bloomfield</b></p> <p>OPEN SUNDAY 1-4 1300 S. 13th St. Bloomfield. 1300 sq. ft. 3 bedrooms, 2 full baths, 2nd floor laundry, large kitchen, fireplace, hardwood floors, central air, sprinkler system, attached garage, circular drive and much more. Priced to sell at \$79,900. FWH 851-1300</p> <p><b>Chamberlain</b> 646-6000</p>	<p><b>302 Birmingham Bloomfield</b></p> <p>OPEN SUNDAY 1-4 1300 S. 13th St. Bloomfield. 1300 sq. ft. 3 bedrooms, 2 full baths, 2nd floor laundry, large kitchen, fireplace, hardwood floors, central air, sprinkler system, attached garage, circular drive and much more. Priced to sell at \$79,900. FWH 851-1300</p> <p><b>Chamberlain</b> 646-6000</p>	<p><b>302 Birmingham Bloomfield</b></p> <p>OPEN SUNDAY 1-4 1300 S. 13th St. Bloomfield. 1300 sq. ft. 3 bedrooms, 2 full baths, 2nd floor laundry, large kitchen, fireplace, hardwood floors, central air, sprinkler system, attached garage, circular drive and much more. Priced to sell at \$79,900. FWH 851-1300</p> <p><b>Chamberlain</b> 646-6000</p>	<p><b>302 Birmingham Bloomfield</b></p> <p>OPEN SUNDAY 1-4 1300 S. 13th St. Bloomfield. 1300 sq. ft. 3 bedrooms, 2 full baths, 2nd floor laundry, large kitchen, fireplace, hardwood floors, central air, sprinkler system, attached garage, circular drive and much more. Priced to sell at \$79,900. FWH 851-1300</p> <p><b>Chamberlain</b> 646-6000</p>	<p><b>303 West Bloomfield</b></p> <p><b>Prestigious Bloomfield Shores</b> Large lot, 1.5 acres, 4 bedrooms, 3 full baths, 2nd floor laundry, large kitchen, fireplace, hardwood floors, central air, sprinkler system, attached garage, circular drive and much more. Priced to sell at \$119,500. FWH 851-1300</p> <p><b>Chamberlain</b> 646-6000</p>	<p><b>303 West Bloomfield</b></p> <p><b>West Bloomfield</b> Large lot, 1.5 acres, 4 bedrooms, 3 full baths, 2nd floor laundry, large kitchen, fireplace, hardwood floors, central air, sprinkler system, attached garage, circular drive and much more. Priced to sell at \$119,500. FWH 851-1300</p> <p><b>Chamberlain</b> 646-6000</p>	<p><b>303 West Bloomfield</b></p> <p><b>West Bloomfield</b> Large lot, 1.5 acres, 4 bedrooms, 3 full baths, 2nd floor laundry, large kitchen, fireplace, hardwood floors, central air, sprinkler system, attached garage, circular drive and much more. Priced to sell at \$119,500. FWH 851-1300</p> <p><b>Chamberlain</b> 646-6000</p>	<p><b>303 West Bloomfield</b></p> <p><b>West Bloomfield</b> Large lot, 1.5 acres, 4 bedrooms, 3 full baths, 2nd floor laundry, large kitchen, fireplace, hardwood floors, central air, sprinkler system, attached garage, circular drive and much more. Priced to sell at \$119,500. FWH 851-1300</p> <p><b>Chamberlain</b> 646-6000</p>	<p><b>303 West Bloomfield</b></p> <p><b>West Bloomfield</b> Large lot, 1.5 acres, 4 bedrooms, 3 full baths, 2nd floor laundry, large kitchen, fireplace, hardwood floors, central air, sprinkler system, attached garage, circular drive and much more. Priced to sell at \$119,500. FWH 851-1300</p> <p><b>Chamberlain</b> 646-6000</p>	<p><b>303 West Bloomfield</b></p> <p><b>West Bloomfield</b> Large lot, 1.5 acres, 4 bedrooms, 3 full baths, 2nd floor laundry, large kitchen, fireplace, hardwood floors, central air, sprinkler system, attached garage, circular drive and much more. Priced to sell at \$119,500. FWH 851-1300</p> <p><b>Chamberlain</b> 646-6000</p>
--	--	--	--	--	--	--	--	--	--

# THE DURBIN COMPANY, Realtors



**GRACIOUS COLONIAL**  
A gracious 4 bedroom traditional colonial sits among other stately homes on a beautiful tree-lined, professionally landscaped yard in lovely West Bloomfield. Coupled with immaculate, move-in and mint condition, this home is within walking distance to Bloomfield Hills Schools. See it today. FWH \$135,000 851-1300



**FOR COLONIAL LOVERS!**  
This magnificent 4 bedroom colonial features, formal dining room, first floor utility room, large kitchen with breakfast room, central air, sprinkling system, attached garage, circular drive and much more, priced to sell at \$79,900. HSA 559-8181



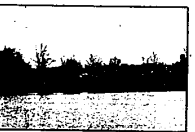
**PILLARED COLONIAL**  
Spacious home with large foyer, four bedrooms, 2 1/2 baths, family room and den is situated impressively on a large lot. Circular drive, central air, mature trees and much more. \$144,500 SFO 851-6000



**NESTLED IN THE WOODS**  
Exciting contemporary with private beach, 11 acre private park with tennis courts, magnificent multi level featuring 3 or 4 bedrooms, great room, family room, library, sauna, wood deck. \$269,000 LWA 851-1300



**LARGE FAMILY?**  
Older home with five bedrooms, Walled Lake beach privileges. Family room with fireplace. Living room with a "Franklin" fireplace. House needs a little "tender loving care". Priced to sell quickly. \$54,900 NFO 851-6000



**WILDLIFE SETTING**  
Includes 50 acre spring-fed lake totaling 159 acres and a farm house to be restored. Ideal for the sportsman-hunting-fishing-snowmobiling-swimming on your own private estate. Land contract terms available. \$225,000 DFE 851-6000



**OWNERS TRANSFERRED**  
Making this lovely well maintained home available. Premium wooded lot, maintenance free, large balcony off master bedroom, central air, underground sprinklers and gas BBQ. Four bedrooms, 2 1/2 baths, and family room. \$136,900 OWL 851-1300



**FLASH! New To Market**  
PRIME FAMILY AREA, with this quad level home, 4 bedrooms, 2 full baths, finished rec room in condition, all appliances stay including washer and dryer. Butcher block counter top, and much more. Priced to sell at \$73,900 559-8181



**WILLIAMS LAKE ESTATES**  
Terrific location - close to elementary school. Nest three bedroom ranch with full basement, over sized two car garage and fenced in back yard. \$44,900 SUH 383-7155

## WEST BLOOMFIELD CONTEMPORARY RANCH

Spacious contemporary ranch with open feeling newly carpeted and decorated. Garage has oversized door to accommodate van. Extra insulation and energy-saving furnace. On a quiet cul-de-sac on 201 acre. \$109,900 SWH 851-1300

## PLEASANT RIDGE

Stately English Manor home with quality redecoration and decor throughout. Five bedrooms, three baths, library, den and much more on a large lot. \$109,900 EFL 851-6000

## FLASH! NEW TO MARKET

For colonial lovers, custom decorated three bedroom, 2 1/2 baths with fireplace, first floor laundry, 2 car attached garage, sprinklers, finished rec room, central air, beautifully maintained and priced to sell for \$74,500 TSE 559-8181

## IMMACULATE

Four bedroom B-level on Waverline Lake. Glass doors on fireplace in family room with walk-out. Two decks plus many more extras. Well landscaped tree lot with sandy beach. \$129,900 WUD 383-7155

## MOVE IN TOMORROW!

Deluxe 4 bedroom, 2 1/2 bath colonial, family room with fireplace, first floor laundry, attached 2 1/2 car garage, finished rec room and office in basement, all appliances and immediate possession. Priced to sell quickly \$87,500. RSE 559-8181

## WOODSTREAM FARMS

Large private lot, wood deck with double gas BBQ. Wet bar in family room, walk-in pantry, custom built Quad level. Ceramic tile in foyer, large country kitchen, sprinkler system. Lovely contemporary home with many quality features. \$159,900 WFI 851-6000

## WALK TO FRANKLIN CIDER MILL

Three or four bedrooms, two full baths, family room, finished basement, hardwood floors, CA, three fireplaces, Bloomfield Hills schools are just a few features of this charming home set on an acre tree lot in Franklin Village area. Quality throughout. \$100,000 WFF 851-1300

## MOVE UP TO PLEASURE

Custom built home in prime area just waiting for you. Imagine yourself at the end of a long day, relaxing in front of a roaring marble fireplace, in your walnut finished family room that is so complete you even have a space for your television. You'll love this home \$114,900 CSO 559-8181

## Prime Location - Pepper Hill Condo

Tastefully decorated in neutral tones. Includes refrigerator, washer and dryer, swimming pool, Club house and sauna available. \$100,000 car garage and CA are just a few of the extras. PWE 383,000 851-1300

## OLD FRANKLIN TOWN

The warmth of the family living is what you will feel walking into this gracious colonial. Spacious foyer, family room with fireplace and built-ins, 1st floor master bedroom suite plus four bedrooms on the second floor laundry room. Built-in heated swimming pool, attached garage, central air and much more \$159,900 RSD 559-8181

## FOUR BEDROOM RANCH

Contemporary home on a heavily treed lot with circular drive. Living room has a circular fireplace. Central air conditioning, ceramic tile in kitchen, dining room, and living room. Hardwood floors in rest. \$124,900 WFF 851-6000

## "CHAMPAGNE TASTE?"

Exciting contemporary condo nestled among the trees featuring 2 bedrooms, 1 1/2 baths, 2 story foyer, dramatic raised dining room, living room and master bedroom features door walk to deck. Beautiful, private wooded setting. DWA \$124,900 851-1300

## CONVENIENT LOCATION

Beautiful two bedroom condo in Redford Township. Heat and water included in maintenance fee. Immediate occupancy and simple assumption makes this condo very desirable. \$42,500 SFE 851-6000



**WOODPECKER LAKE**  
In West Bloomfield. Outstanding custom built ranch situated on close to an acre of matured treed grounds. Large, free form patio and garden area. Neutral tones highlight this four bedroom home with lake privileges. To see is to be in level \$172,500 DWE 851-1300



**COUNTRY SETTING**  
With City conveniences. Lovely ranch home with privacy. Three bedrooms. Country kitchen. Beautifully finished recreation room. Ideal for entertaining. 2 1/2 car garage \$115,000 EWE 851-1300 CA and Gas \$15,000



**WITH THE WOMAN IN MIND**  
Is how this home was built! Four bedroom, two story contemporary in Wabek. Super island kitchen with built-ins. Custom library any professional will cherish. Warm gathering room. Much more. Immediate possession. \$234,900 SWH 851-1300



**ARCHITECT'S EXCITING CUSTOM BUILT**  
Contemporary on large private wooded site taking full advantage of nature's beauty with skylights, balconies and decks. Soaring cathedral ceilings, walk-out lower level and spacious studio are only a few of the unique features in this sleek lined home. \$250,000 SWP 851-1300



**HIGHGATE ON THE GREEN**  
Family living at its best. Immediate possession. Charming three bedroom colonial feature, beamed cathedral ceiling and fireplace in family room. Finished recreation room, marvelous closets. All this on a lovely large lot on a quiet cul-de-sac. \$78,500 RWO 851-1300



**WHITE LAKE TOWNSHIP**  
Ideal four bedroom Quad-level. Immaculate condition. Landscaped beautifully. 4th level has bar, storage area and walk-out. Brick fireplace in family room. Lake privileges. \$92,500 HUU 353-7155



**CONVENIENTLY LOCATED IN W.B.**  
Ideal bedroom or retirement home in beautiful condition. Features 3 bedrooms, 1 1/2 bath, 1st floor laundry and much more. Don't let this one escape you. Only \$59,900 PWE 647-5500



**NEWLY DECORATED**  
Lovely three bedroom hi-level on a well landscaped lot. Family oriented neighborhood near shopping and quick access to expressways. Spacious family room. \$90,000 RFA 851-6000



**SPACIOUS TWYCKINGHAM COLONIAL**  
Newly decorated 5 bedroom Contemporary decor with all new window treatments. Exposed hardwood floors. Central air, sprinklered, maintenance free aluminum and brick exterior. Very clean, move-in condition. \$110,000 GWL 851-1300



In The Heart of West Bloomfield  
Quality 3 1/2 bath four-bedroom home with 2 1/2 baths. Lovely 1 1/2 car garage in contemporary neutral tones and painted library. CA, circular drive and underground sprinkler. SWT \$105,000 851-1300

851-1300 WEST BLOOMFIELD  
6346 Orchard Lake Rd.  
Just N. of Maple Road

851-6000 FARMINGTON  
29920 Orchard Lake Rd.  
Just North of 13 Mile Rd.

559-8181 SOUTHWEST - LATHRUP  
20200 Southfield Rd.  
Bet. 11 & 12 Mile

647-5500 BIRMINGHAM - BLOOMFIELD  
1591 Woodward Ave.  
Just South of Long Lake Rd.

625-0200 CLARKSTON  
31 S. Main  
Corner of Depot

363-7155 LAKES AREA  
7936 Cooley Lake Rd.  
Union Lake

528-1200 TROY  
1055 E. Long Lake Rd.  
Just E. of Rochester Rd.

# THE DURBIN COMPANY, Realtors