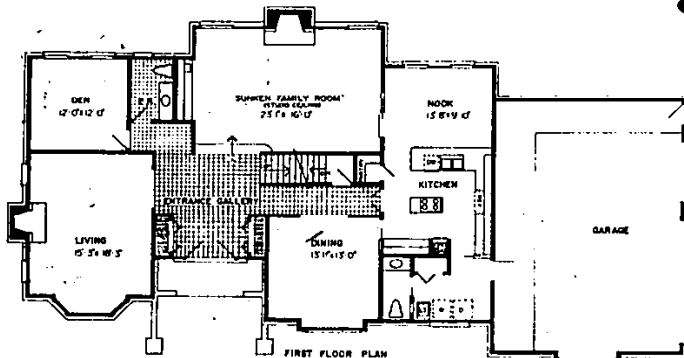


Homes start at \$200,000

Woodlands begins to take shape



Abbey Home's traditional Tudor two-story Woodridge features stained and leaded glass windows, a sunken, studio-ceilinged family room with wet bar and a lighted courtyard entry.

Less than a year ago, Abbey Homes began development of a scenic, wooded 80-acre parcel adjacent to Orchard Lake south of Pontiac Trail in the City of Orchard Lake.

Since then, this luxury development — Orchard Lake Woodlands — has been booming with activity.

David Johnson, Abbey's head of land development, says "on site improvements (city sewer and water and streets) were completed last year with efficiency and expediency."

"This allowed us to begin construction of model homes and enabled us to offer a wide diversification of custom homes to our clients. Our firm, Maple Associates — Realtors, is proud to be representing some of southeastern Michigan's most innovative custom

home builders in the Woodlands."

Orchard Lake Woodlands now offers luxury homes built by Robertson Brothers, Sundance Building Co., Award Builders, Inwoods Home Corp., James D. Compo, Inc. and Abbey Homes.

The various models average around 3,700-square-feet with prices ranging from \$200,000 to \$275,000.

The Woodridge II is the on-site sales information center for the project. In this model, color renderings of the other available models are on display.

Styles range from Abbey's traditional Tudor two-story featuring stained and leaded glass windows in the second floor hall loft to a dramatic contemporary built by Inwoods with the second level entirely devoted to a master suite with fireplaced sitting

room and outdoor balconies.

THERE IS EVEN a model by Award Builders with space in its ample two-car garage designated as "sports car storage" for the sports car buff who prefers to keep his or her sports car safely stored during the winter months.

The brisk pace of sales was evidence when Maple Associates sold the first model by Robertson Brothers in the project as the bricks were being delivered to the site.

Robertson Bros. now have a French influenced two-story under construction. Details include a large family room with a massive fireplace framed by three pairs of French doors.

Attractions at Orchard

(Continued on page 14)

GRAND OPENING

A great
place to
live...
Plymouth

Waverly
Village

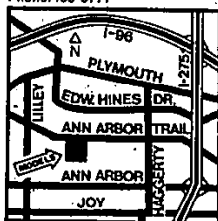


Come out and see one of Plymouth's newest communities, Waverly Village. See our 3 and 4 bedroom Ranches and Colonials. Close to quaint downtown Plymouth shopping and to the superb Plymouth schools your children will attend. Come out for our Grand Opening celebration! Homes priced from \$73,990.



Building family communities
for today's life-styles

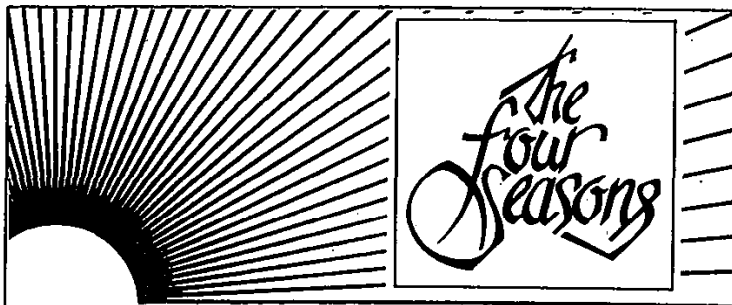
Models open Daily and Sun. 1-8,
Sat. 1-5, Closed Thur.
Phone: 455-8777



**THOMAS
ANTHONY
HOMES INC.**



This Award Builders model provides space in its two-car garage for the sports car buff who prefers to keep his treasure inside during the winter months.



The Luxury Condominium Community of Bloomfield Hills

A distinctive residence designed to offer you
a home amid luxurious, yet subtle surroundings.

2945 Woodward Avenue, Bloomfield Hills, Michigan
"One Mile North of Long Lake Rd."

Shown: Monday through Sunday 1 P.M. to 6 P.M.

Offered from \$79,900 (closed Thursday)

Price Increase effective May 15th, 1979

Phone: 338-7900

Developed By: Common Interest Properties Inc.
Sales By: Condominium Realty Company
Managed By: Community Management Company

